



331 Park Ave S

331 Park Ave S, New York, NY 10010

BY **ora**



Kyle Manning

6 Greene Realty

6 Greene St, New York, NY 10013

kyle@by-ora.com

(443) 528-3004



331 Park Ave S

Upon Request

331 Park Avenue S is a Midtown Manhattan boutique office building in New York City. Spanning 45,000 SF on 12-stories, experience highly designed and customizable workspaces that will set up businesses for success. Amenities include 24/7 building accessibility through a mobile key app, on-demand meeting rooms with seamless Zoom video conferencing, and fully furnished work environments.

Choose...

- Boutique office building in Midtown Manhattan offering fully furnished and customizable workspaces.
- Availability ranges from a single desk to private offices, full floors, and 45-employee capacity environments.
- Featuring all-inclusive lease rates and amenities such as 24-hour building accessibility and Zoom-enabled conference rooms.
- 331 Park Avenue S is located in the Gramercy Park neighborhood in the proximity of parks, dining options, and more.



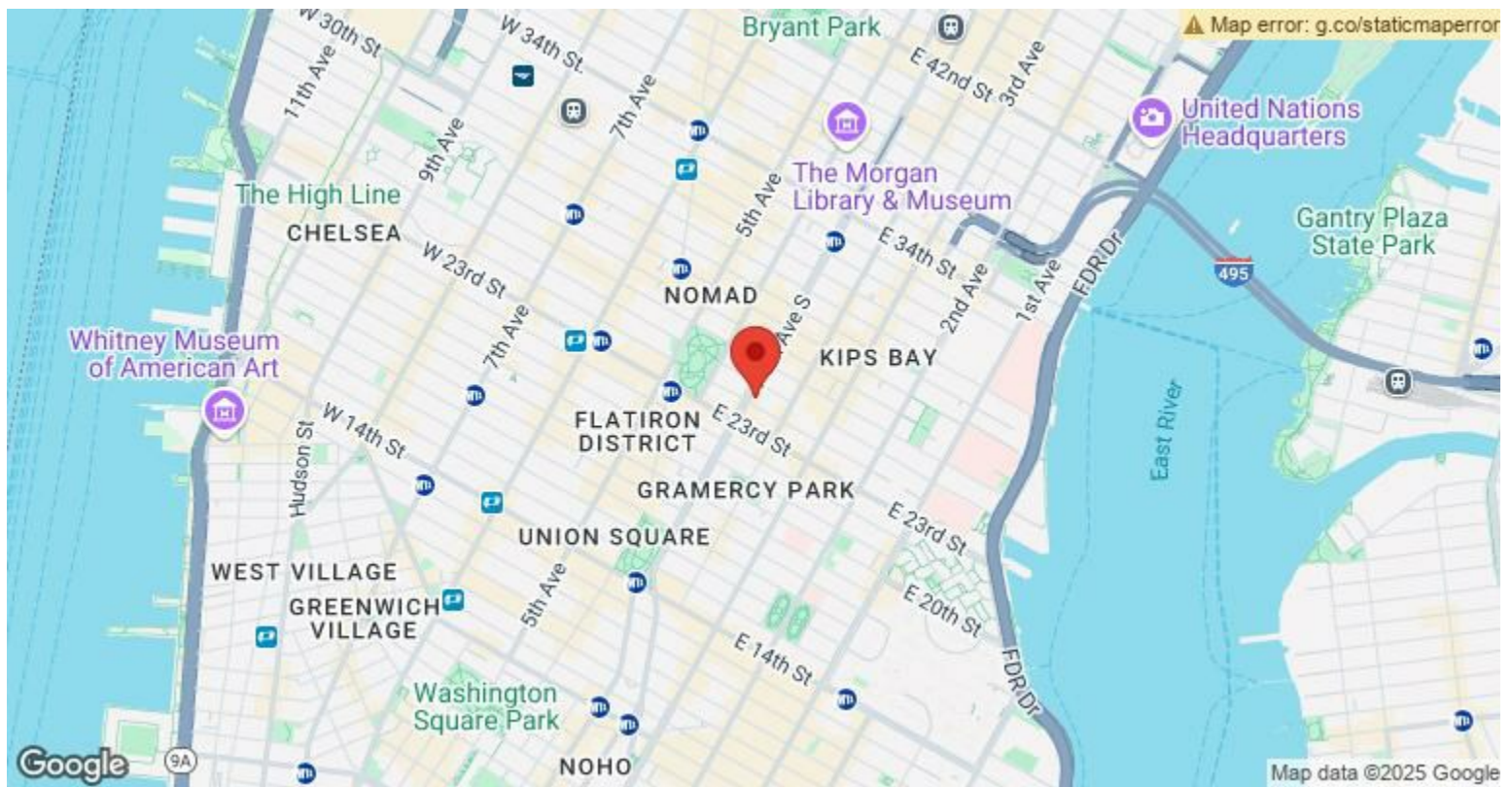
Rental Rate:	Upon Request
Property Type:	Office
Building Class:	A
Rentable Building Area:	45,000 SF
Year Built:	1914
Walk Score ®:	100 (Walker's Paradise)
Transit Score ®:	100 (Rider's Paradise)
Rental Rate Mo:	Upon Request

1

5th Floor

Space Available	3,595 SF
Rental Rate	Upon Request
Date Available	Now
Service Type	Negotiable
Built Out As	Standard Office
Space Type	Relet
Space Use	Office
Lease Term	Negotiable

- Full floor presence- High-end existing installation that is fully furnished and wired- Lobby entrance on Park Avenue South- 6 private offices- Conference Room- 2 bathrooms- 2 phone booths- Tenant controls HVAC- CAM included in rent



331 Park Ave S, New York, NY 10010

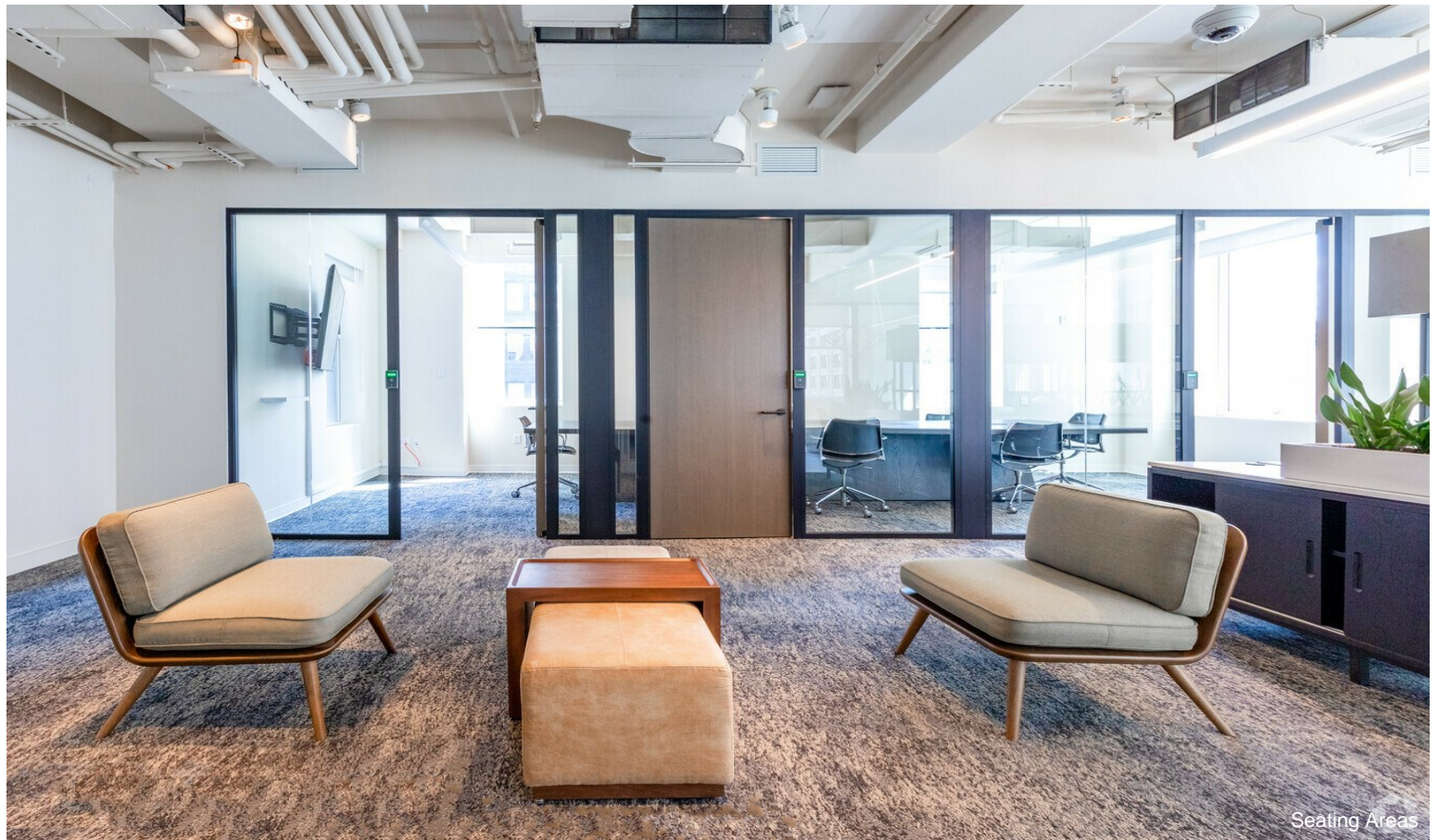
331 Park Avenue S is a Midtown Manhattan boutique office building in New York City. Spanning 45,000 SF on 12-stories, experience highly designed and customizable workspaces that will set up businesses for success. Amenities include 24/7 building accessibility through a mobile key app, on-demand meeting rooms with seamless Zoom video conferencing, and fully furnished work environments.

Choose from a single desk, individual office, or partial and full floor options that can accommodate up to 45 employees. Rent includes fully built space, custom furniture, cleaning, CISCO Wi-Fi networking, CAM, electric, access to the amenity floor, concierge/front desk attendant services, and more. Situated in the Gramercy Park neighborhood, 331 Park Avenue S is within steps of quality restaurants, retail shopping, and scenic parks.

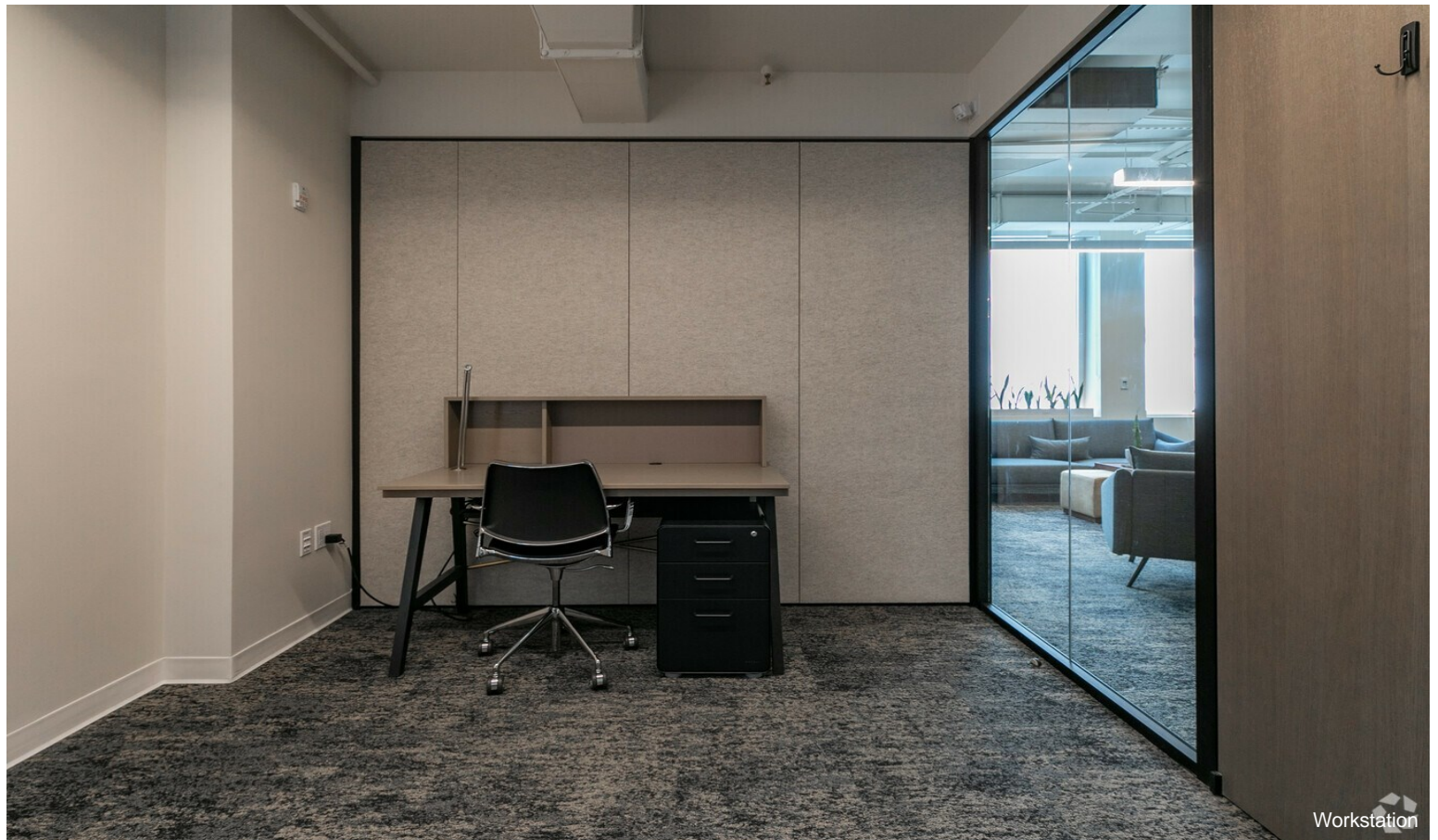
Property Photos



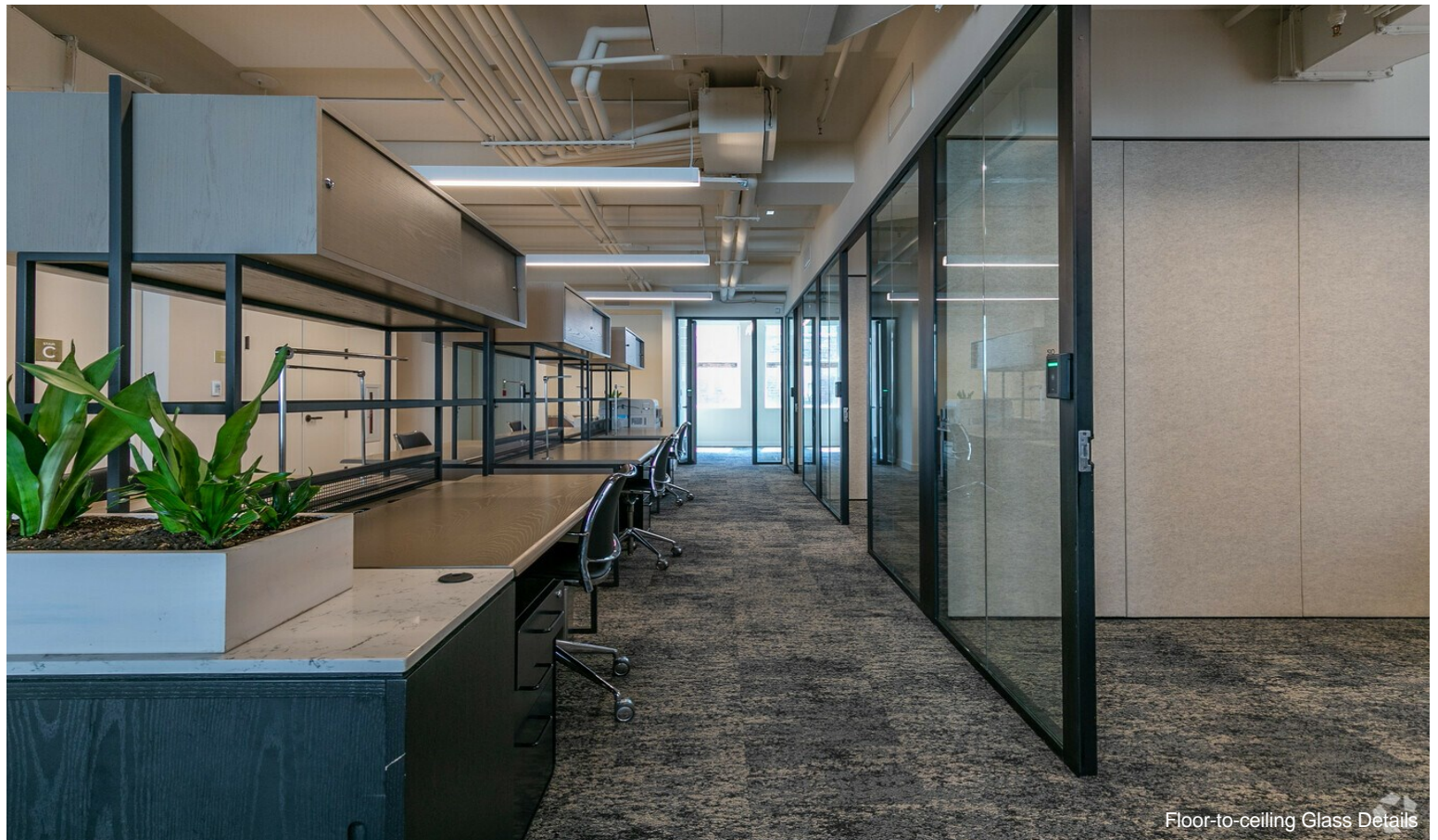
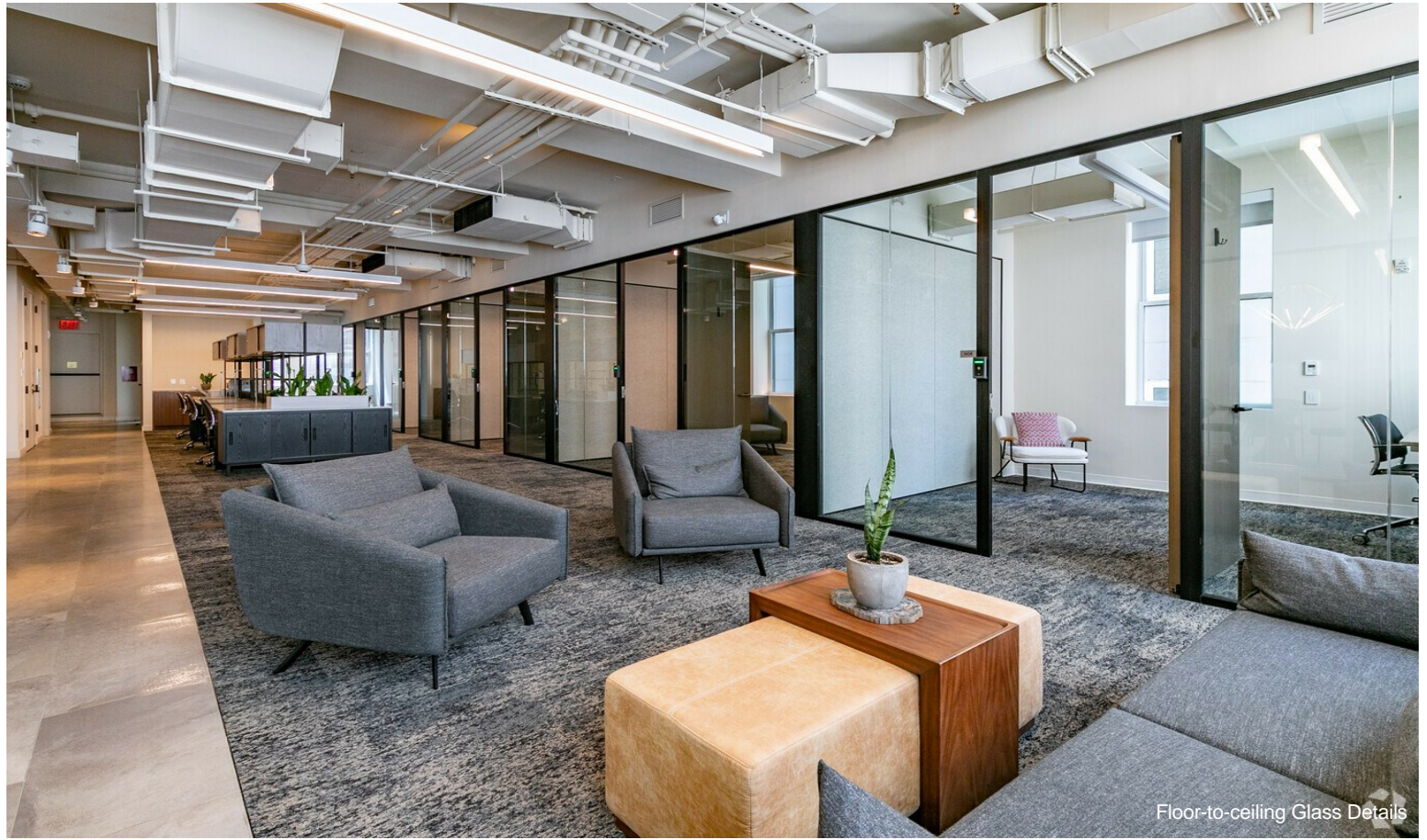
Property Photos



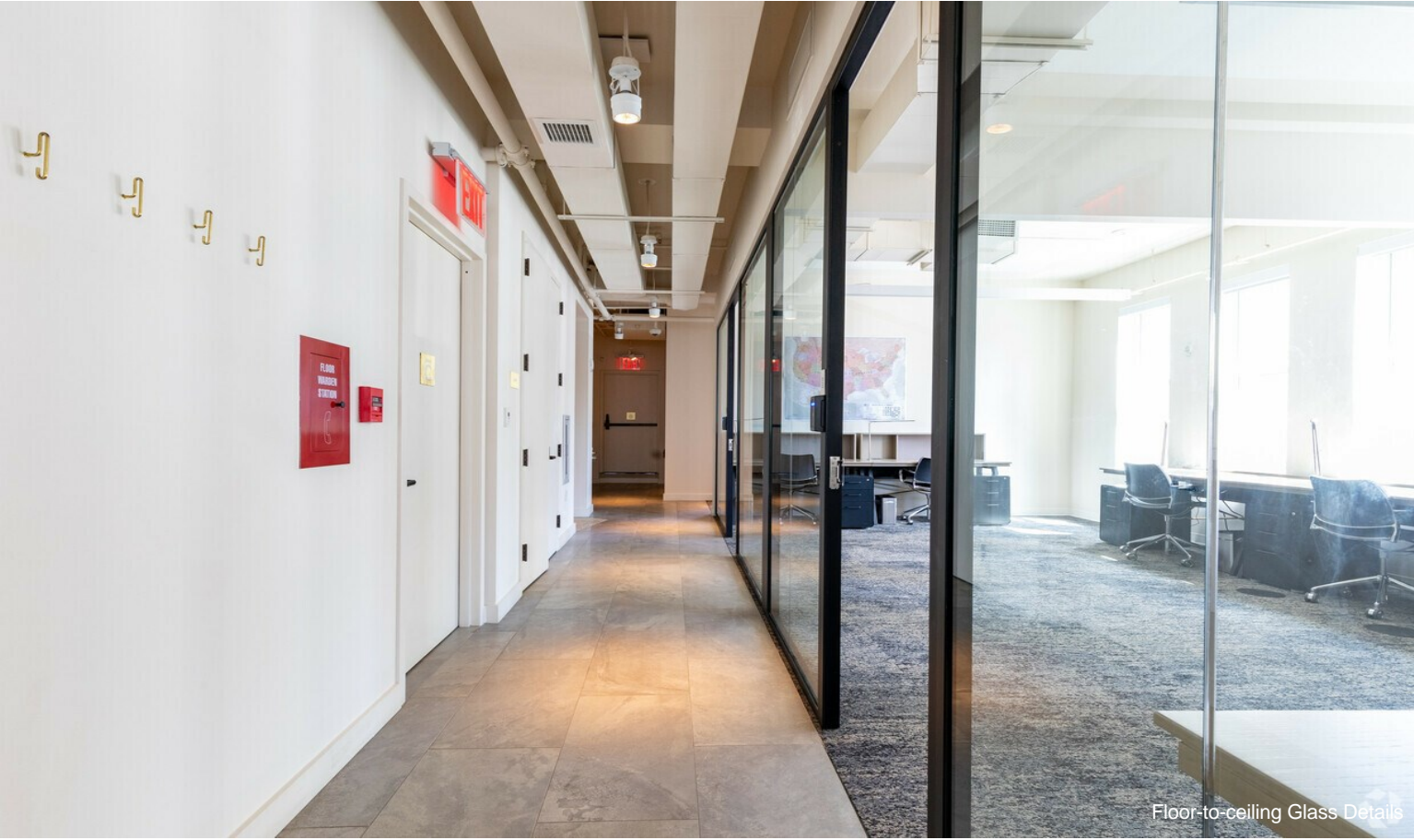
Property Photos



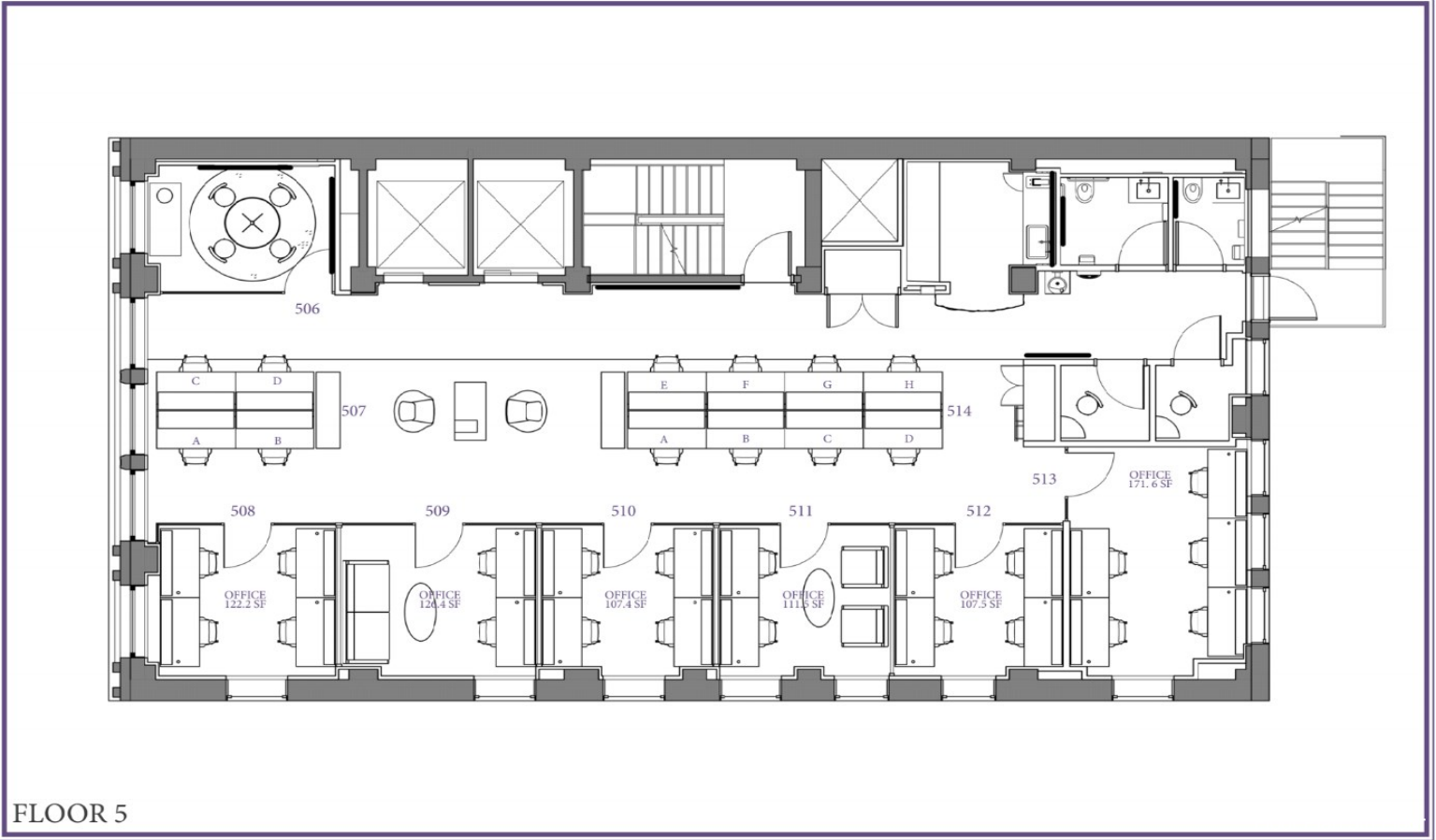
Property Photos



Property Photos



Floor-to-ceiling Glass Details



FLOOR 5