

11475 – 11477 OLDE CABIN ROAD
ST. LOUIS, MO 63141



Contact Information

Michael Cozad
(314) 646-3307

mcozad@cozadgroup.com

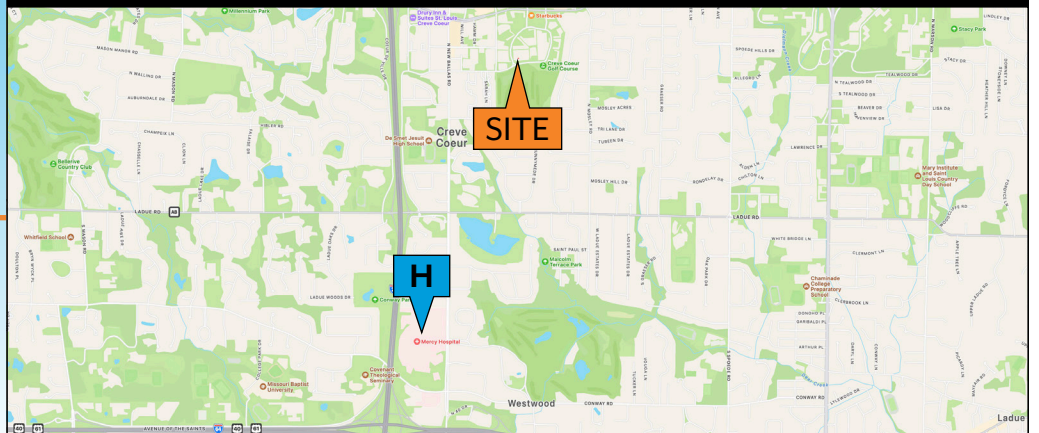
Matt Hirsch
(314) 646-3305
mhirsch@mdrea.com

PROPERTY HIGHLIGHTS

- ▶ Office / Medical Office suites available
 - Suite 11477-100: 723 SF
 - Suite 11475-220: 3,014 SF
 - Suite 11477-320: 2,893 SF
 - Suite 11477-400: 6,817 SF
- ▶ Located in Creve Coeur Office Park near I-270 and Olive
- ▶ Views overlooking Creve Coeur Golf Course
- ▶ Abundant surface parking
- ▶ **Lease Rate: \$21.95/sf FS**



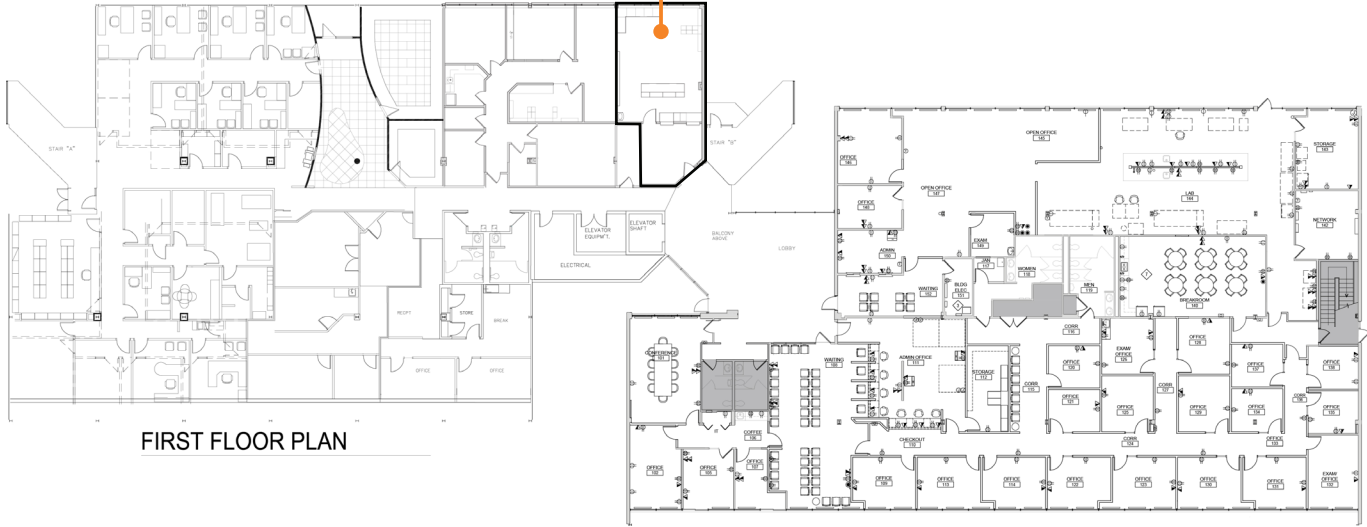
Cozad Commercial Real Estate
MD Real Estate Advisors, LLC
16 Sunnen Drive, Ste. 164
St. Louis, Missouri 63143



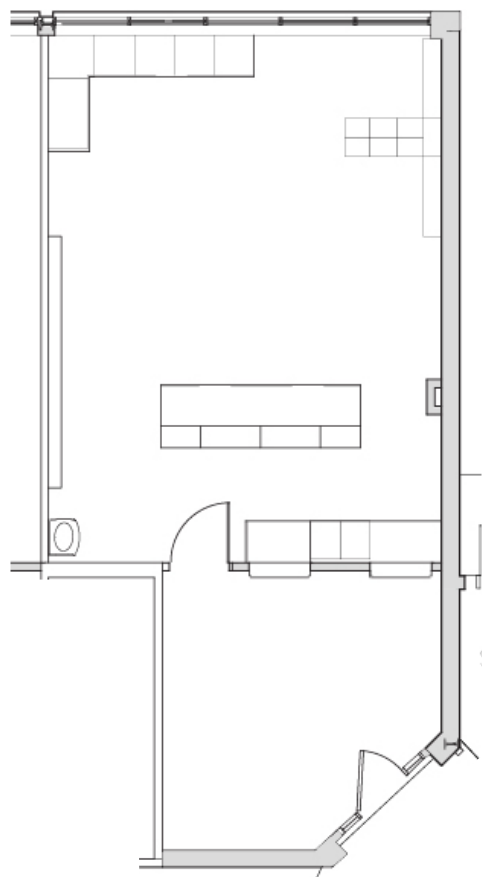
11475 – 11477 OLDE CABIN ROAD

ST. LOUIS, MO 63141

11477-100
723 SF

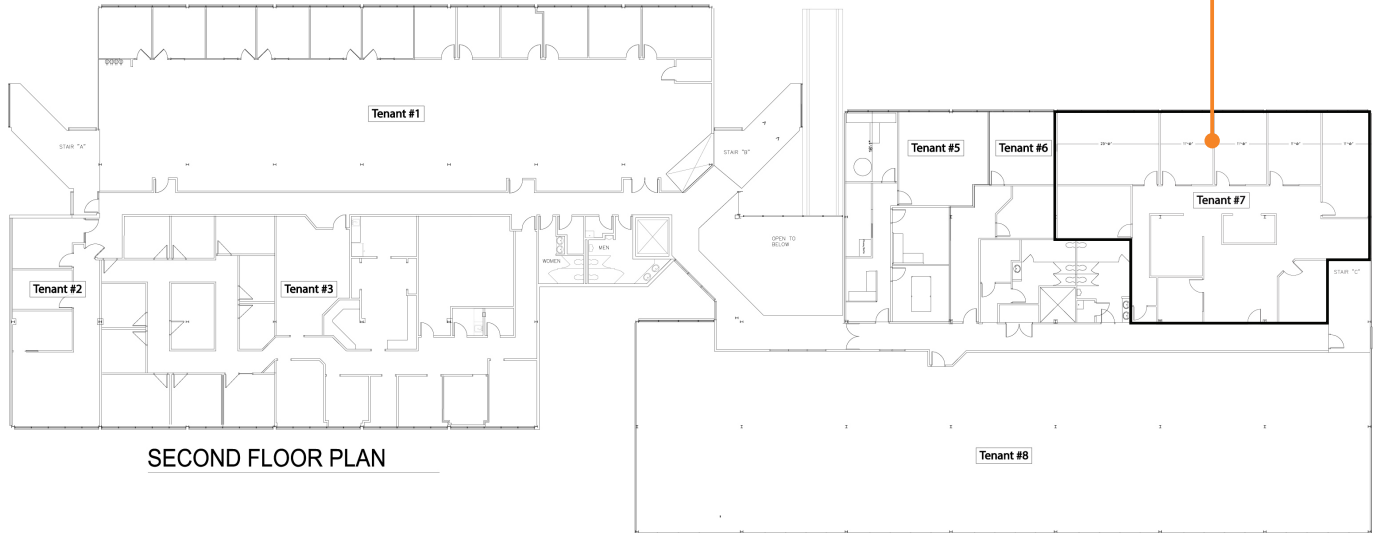


FIRST FLOOR PLAN

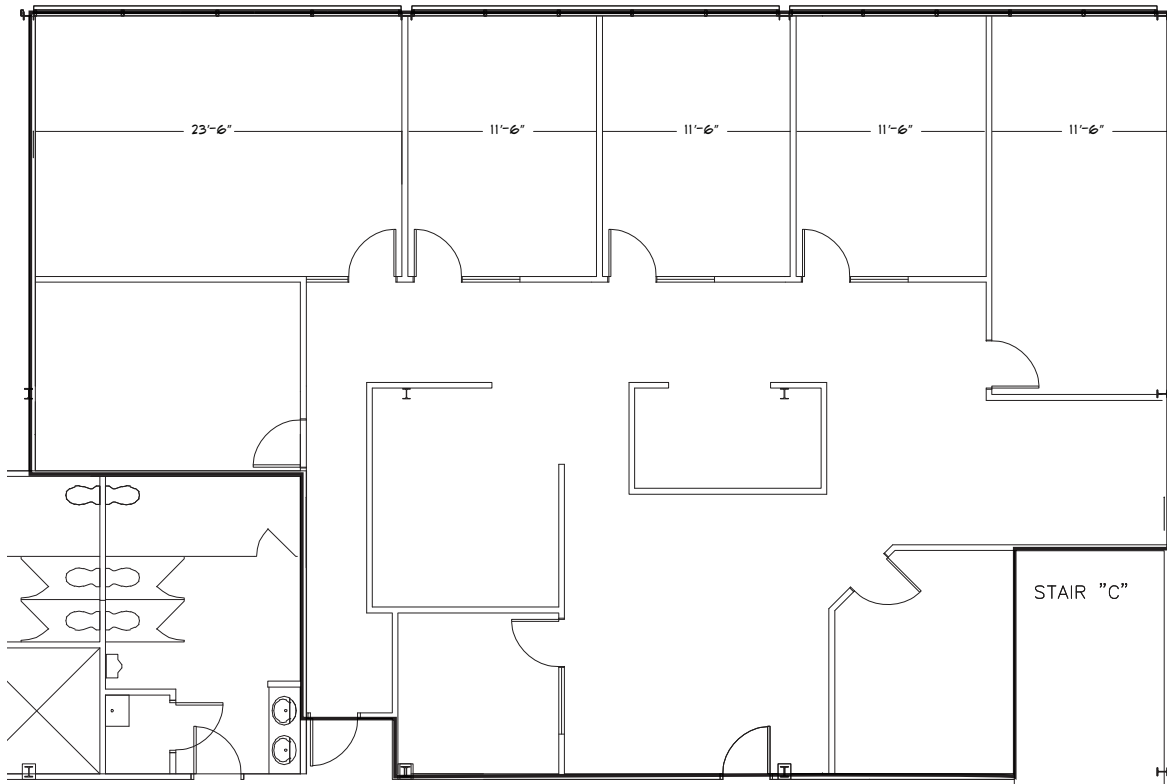


11475 – 11477 OLDE CABIN ROAD ST. LOUIS, MO 63141

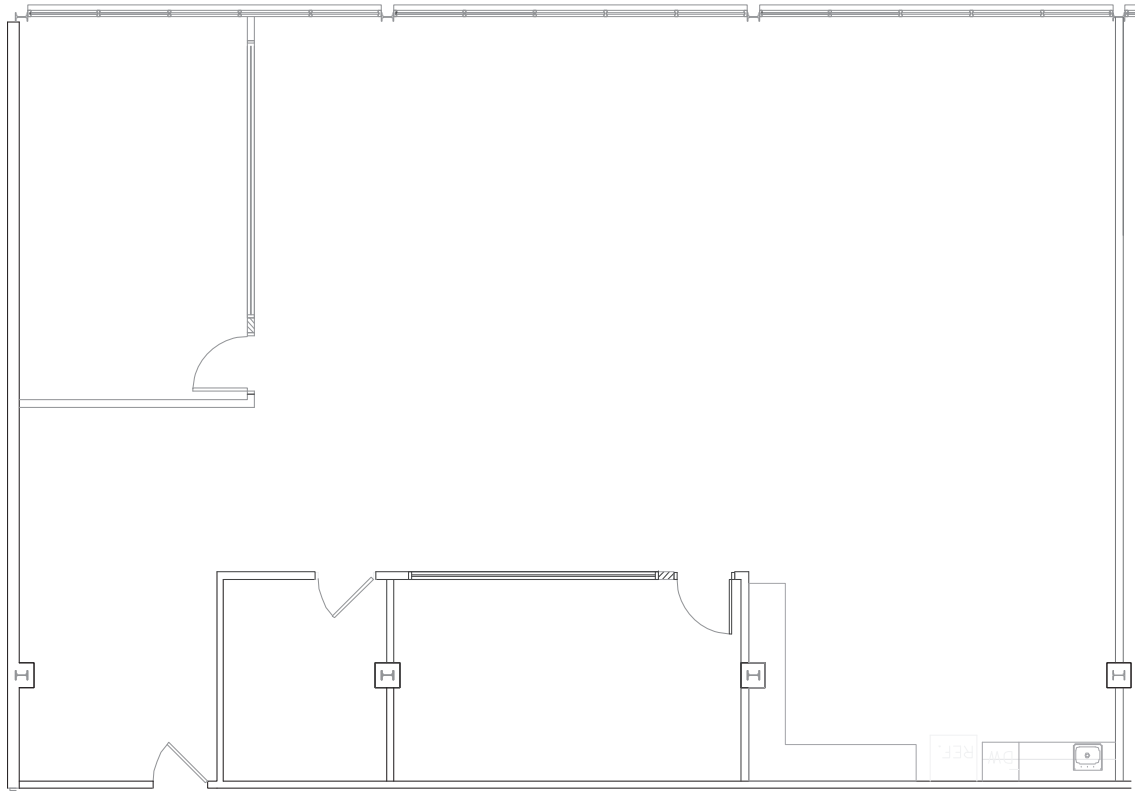
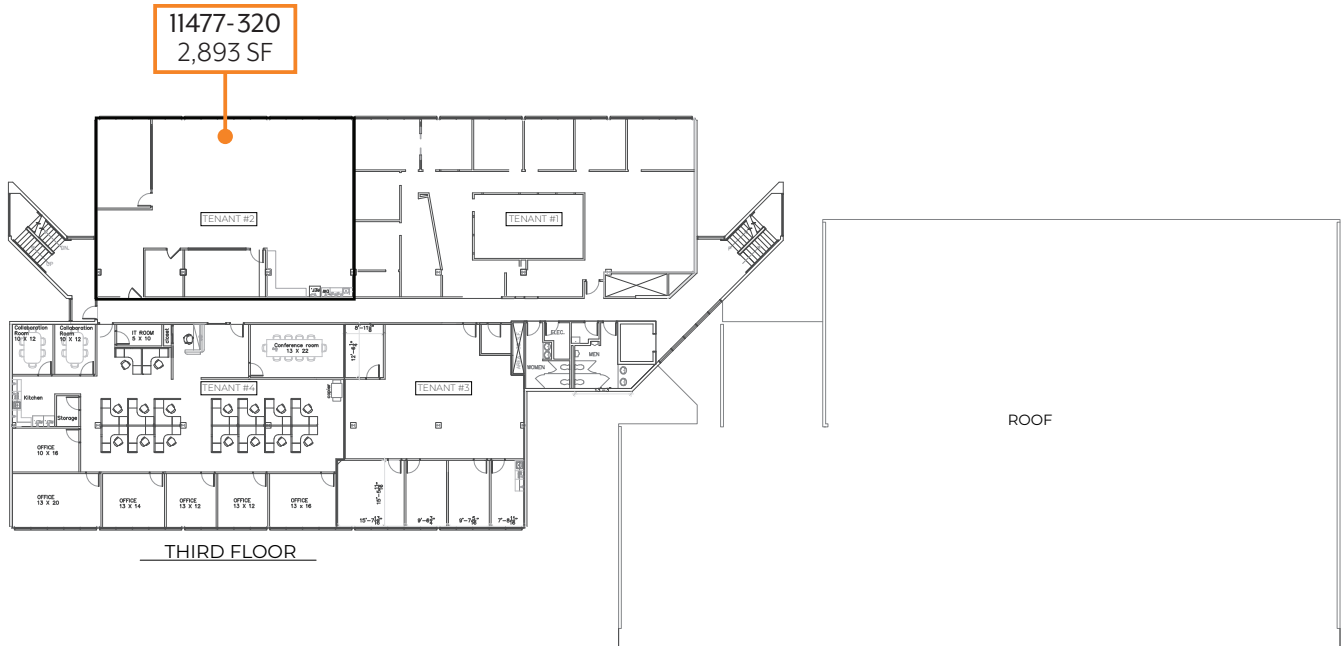
11475-220
3,014 SF



SECOND FLOOR PLAN

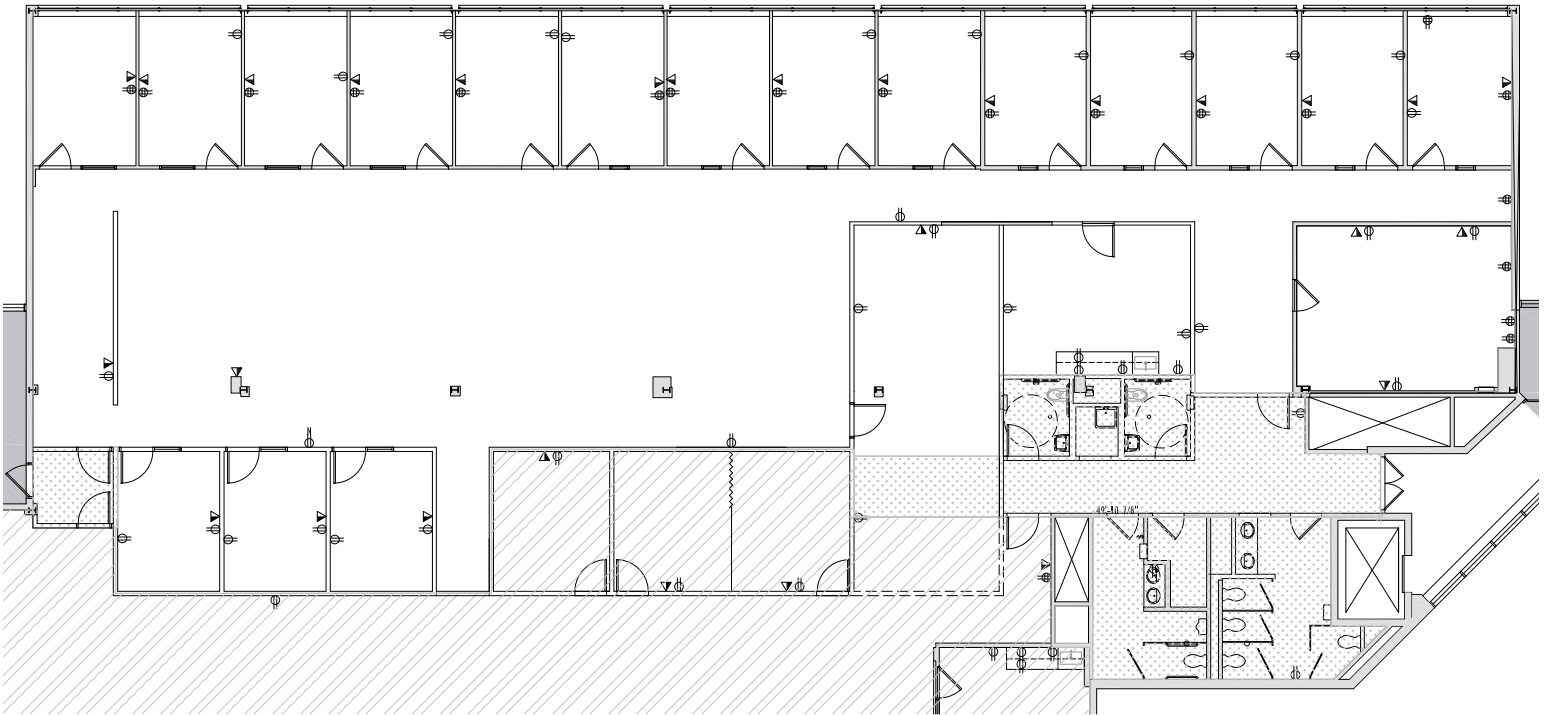
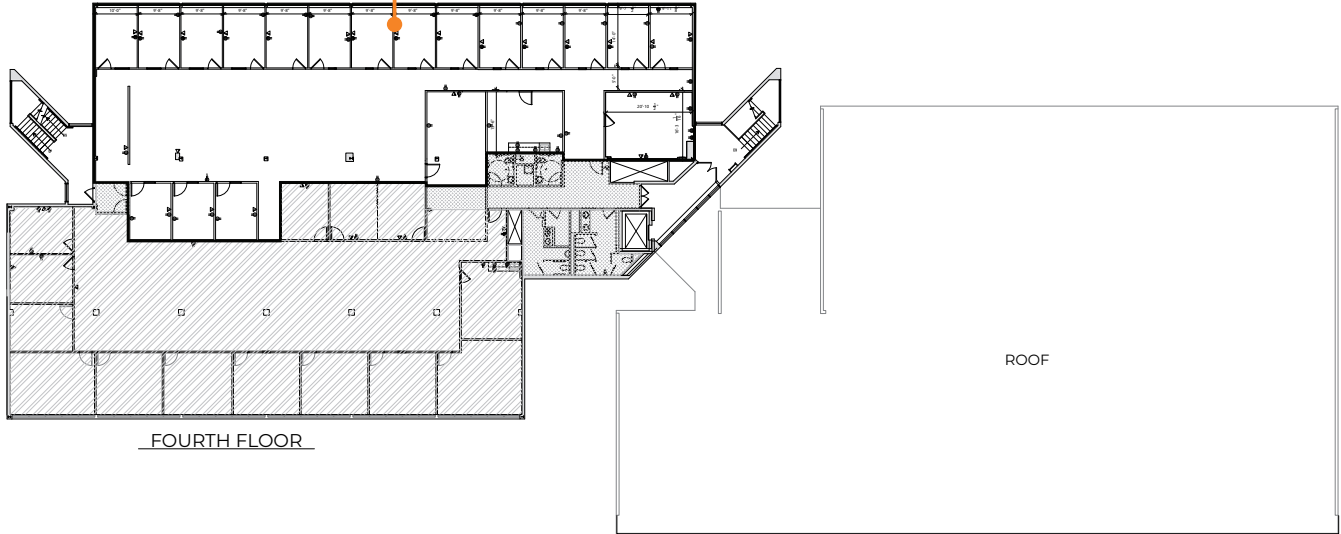


11475 – 11477 OLDE CABIN ROAD ST. LOUIS, MO 63141



11475 – 11477 OLDE CABIN ROAD ST. LOUIS, MO 63141

11477-400
6,817 SF



Information herein has been obtained from the owner of the property or from other sources. The brokers do not guarantee the accuracy of this information. Sellers and brokers make no representation as to the environmental or other conditions of the property and that purchaser investigate fully.

**COZAD COMMERCIAL REAL ESTATE
MD REAL ESTATE ADVISORS**
A subsidiary of Cozad Commercial Real Estate, Ltd.
16 Sunnen Dr., Ste. 164 • St. Louis, MO 63143