

RETAIL SPACE

FLORHAM VILLAGE SHOPPING CENTER

187 COLUMBIA TURNPIKE
FLORHAM PARK | NEW JERSEY

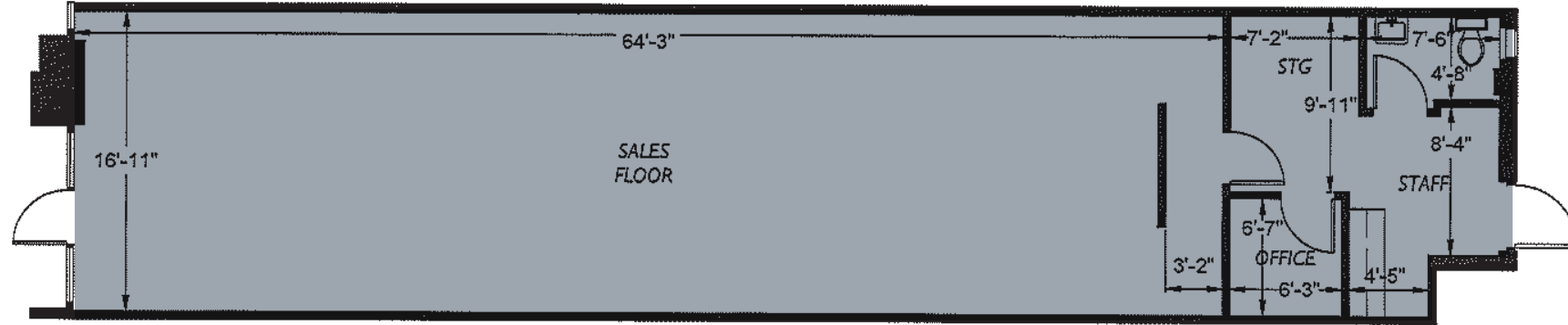
Prime Retail Spaces
Available in the Center



RIPCO
REAL ESTATE

SPACE DETAILS

SPACE #6: 1,406 SF



SIZE

Space #6*	1,406 SF
*Available Q1 of 2025	
Space #11	3,154 SF
Space #16	3,600 SF
*Available Spring 2025	
Space #18	1,358 SF
Lower Level	5,630 SF
Lower Level	8,300 SF
Total	23,448 SF

GLA

56,600 SF

CO-TENANTS

CVS, Panera Bread, USPS, JETSET Pilates, The Little Gym, The Now Massage

POSSESSION

Immediately

RENT

Upon Request

NEIGHBORS

Trader Joe's, Kings Supermarket, Starbucks, and Pastosas

COMMENTS

Prime location at lighted intersection with high visibility and heavy daytime traffic

High end demographics

Renovated center with ample parking

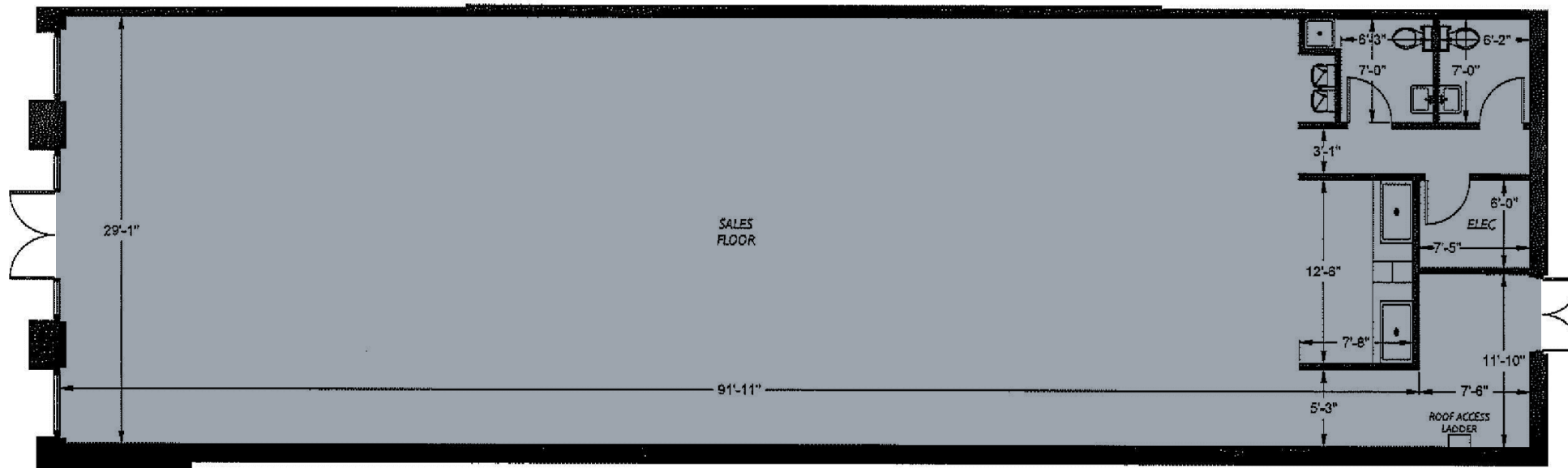
350 parking spaces

Zoned Retail/Commerical

Property sits in the heart of Florham Park Business Center

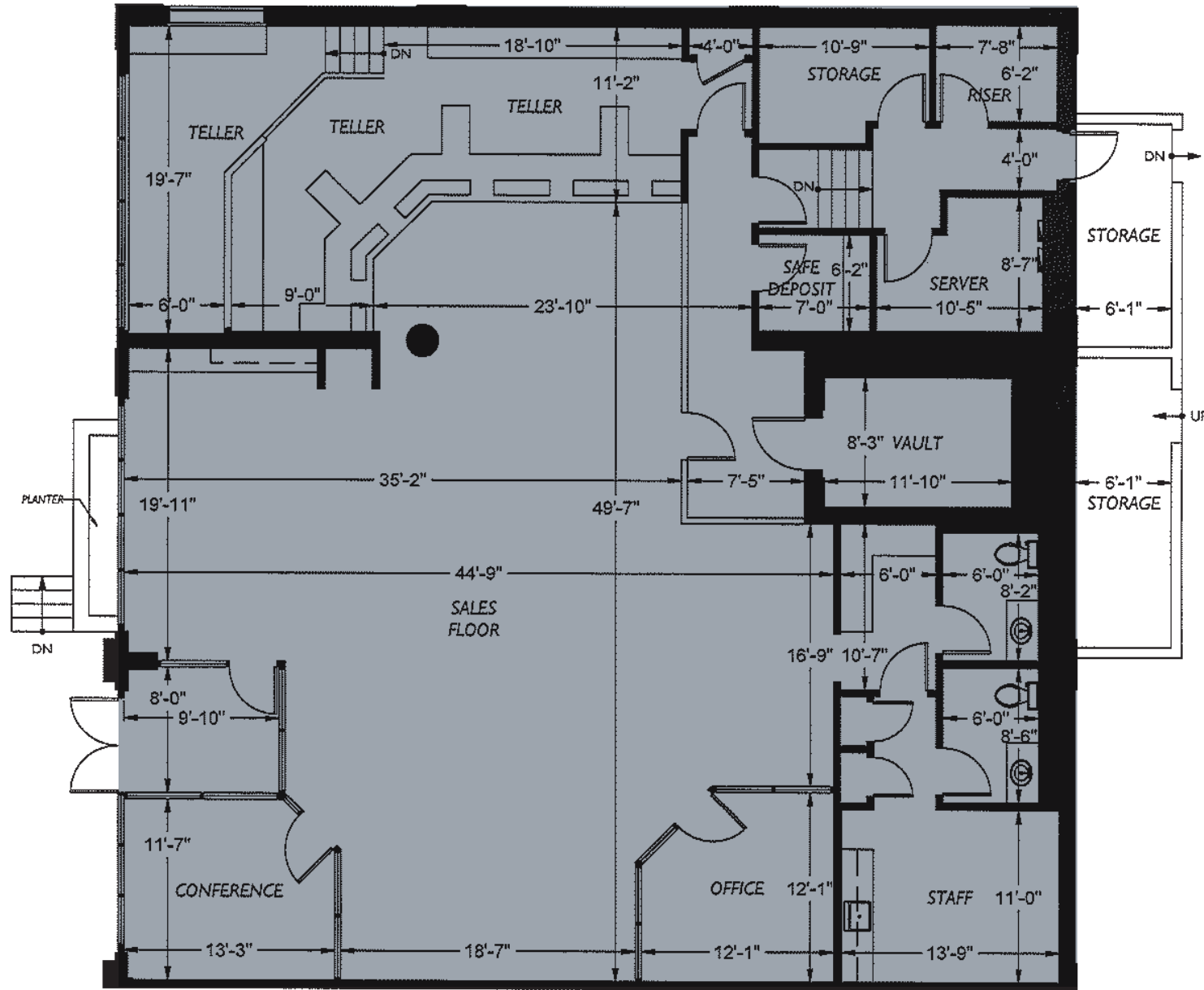
Minutes from Route 24, 287, 10, 80 and 280

SPACE #11: 3,154 SF

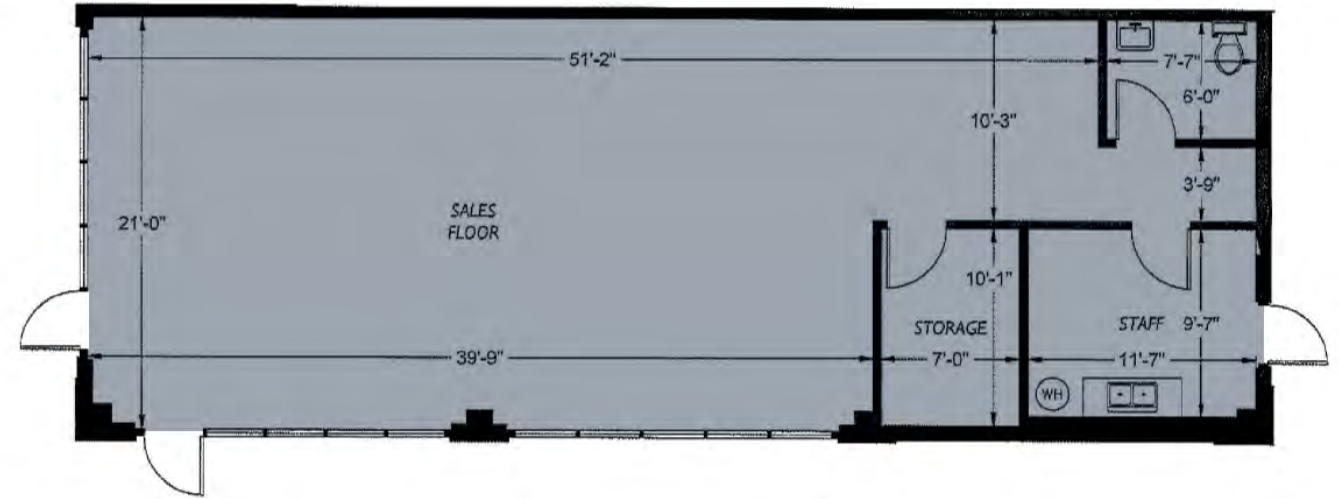


SPACE DETAILS

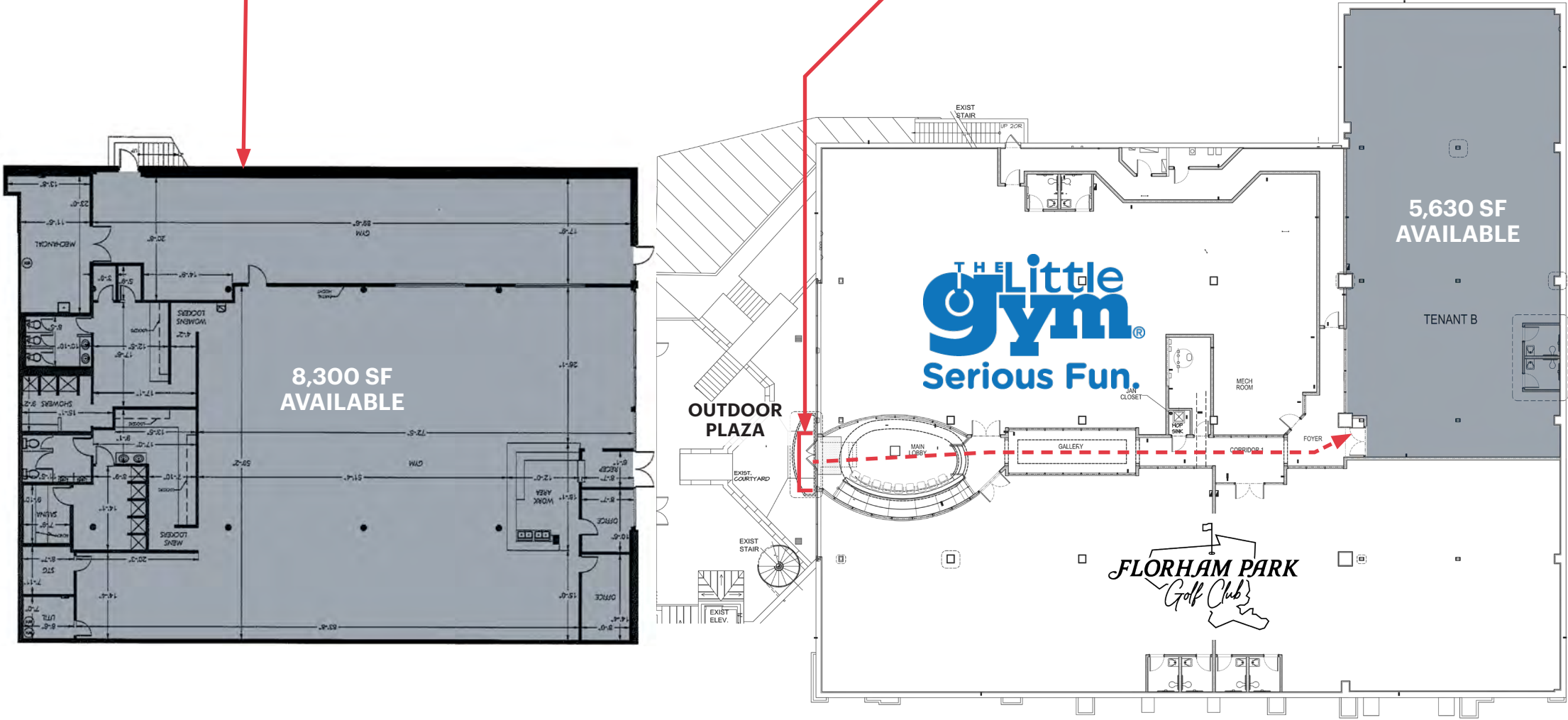
SPACE #16: VALLEY NATIONAL BANK | 3,600 SF



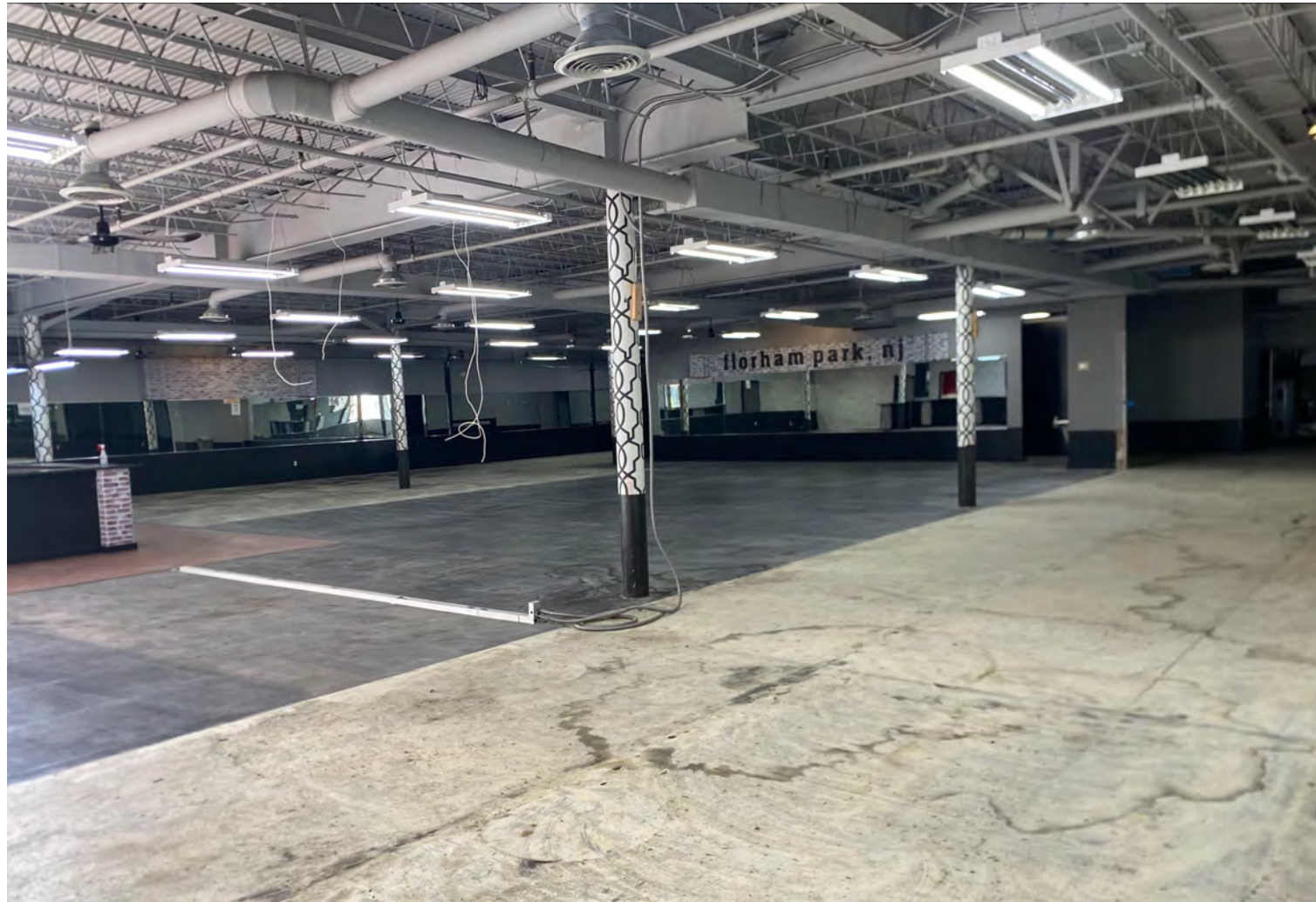
SPACE #18: 1,358 SF - END CAP



LOWER LEVEL COURTYARD LAYOUT - 8,300 SF & 5,630 SF AVAILABLE



LOWER LEVEL GYM PHOTOS



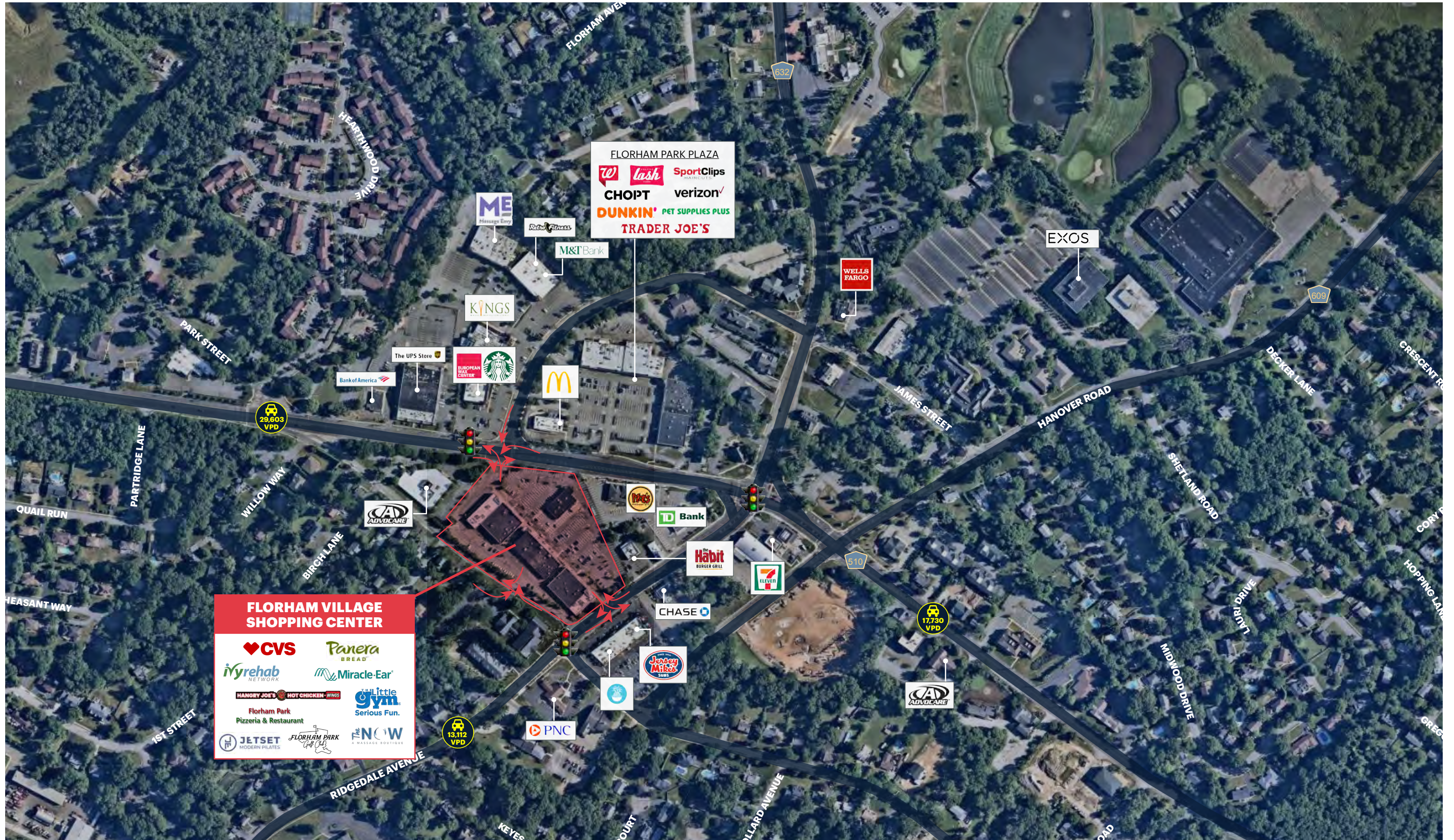
ADDITIONAL PHOTOS



MARKET AERIAL



LOW LEVEL AERIAL



OFFICE POPULATION



DEMOGRAPHICS



1 MILE RADIUS

POPULATION	5,679	TOTAL BUSINESSES	551
HOUSEHOLDS	2,282	TOTAL EMPLOYEES	8,577
MEDIAN AGE	46.7	TOTAL DAYTIME POPULATION	11,357
COLLEGE GRADUATES (Bachelor's +)	2,869 - 69%	AVERAGE HOUSEHOLD INCOME	\$216,063

3 MILE RADIUS

POPULATION	50,635	TOTAL BUSINESSES	3,437
HOUSEHOLDS	18,226	TOTAL EMPLOYEES	58,663
MEDIAN AGE	42.3	TOTAL DAYTIME POPULATION	83,256
COLLEGE GRADUATES (Bachelor's +)	24,176 - 71%	AVERAGE HOUSEHOLD INCOME	\$223,210

5 MILE RADIUS

POPULATION	155,020	TOTAL BUSINESSES	9,893
HOUSEHOLDS	57,066	TOTAL EMPLOYEES	166,228
MEDIAN AGE	42.1	TOTAL DAYTIME POPULATION	239,183
COLLEGE GRADUATES (Bachelor's +)	76,004 - 71%	AVERAGE HOUSEHOLD INCOME	\$232,556

*2024 estimates

CONTACT EXCLUSIVE AGENTS

FLORIAN SUSERMAN
fsuserman@ripconj.com
201.777.2301

SAMANTHA ZAWADZKI
szawadzki@ripconj.com
201.256.0542

RIPCO
REAL ESTATE

611 River Drive
3rd Floor
Elmwood Park, NJ 07407
201.777.2300

Please visit us at ripconj.com for more information

This information has been secured from sources we believe to be reliable, but we make no representations as to the accuracy of the information. References to square footage are approximate. Buyer must verify the information and bears all risk for any inaccuracies.