

11113 S. SUNNYLANE ROAD
OKLAHOMA CITY, OK 73160

Industrial Warehouse For Sale

4,576 SF on 2 Acres MOL

Sales Price: \$350,000

NAIRED

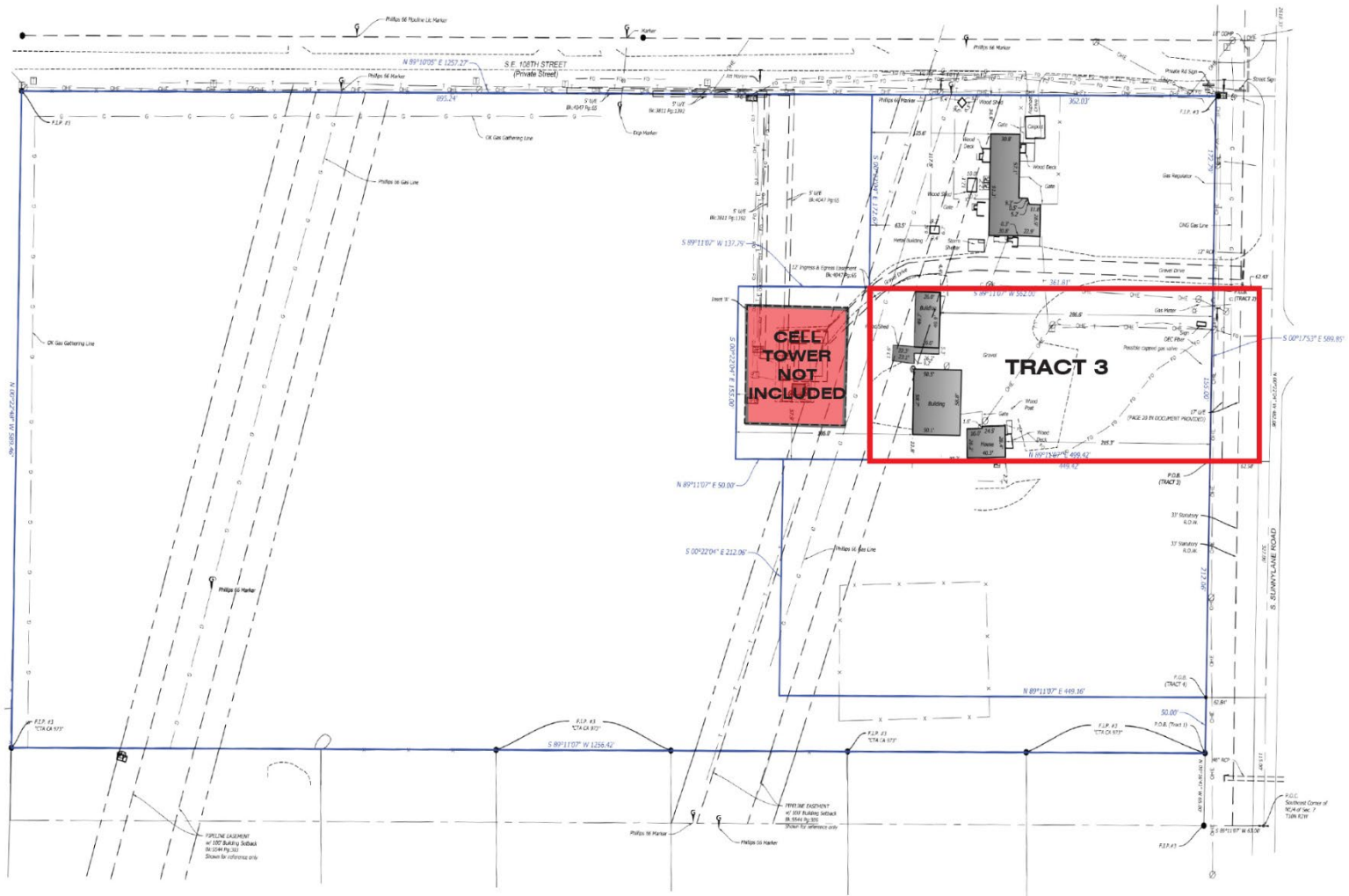
COMMERCIAL
REAL ESTATE



NAIRED

405.840.0600
NAIRED.COM

AMANDA SULLIVAN
405.323.6423
AMANDA@NAIRED.COM



PROPERTY HIGHLIGHTS

- 4,576 SF Metal Building sits on 2 Acres MOL of Land, the Building was Used as Former Semi-Truck Repair Service
- The Property Consists of 3 Buildings
- 1,200 SF Residential Structure that could be Refurbished into a Home or Office
- 800 SF Shop and/or Garage
- 1 Restroom in the Metal Building
- Mezzanine with an Office Area
- (2) 14' Overhead Doors, 1 in Front & 1 in Rear for Drive-Thru Purposes
- 18' Eve Height
- Zoned: I-1

NAIRED

405.840.0600
NAIRED.COM

AMANDA SULLIVAN
 405.323.6423
 AMANDA@NAIRED.COM



LOCATION HIGHLIGHTS

- Easy Access to I-240, I-35 & Tinker Air Force Base
- Approximately 590' of Frontage on S. Sunnyslane Road
- Surrounded by New Residential Developments, Retail & Industrial Properties

NAIRED

405.840.0600
NAIRED.COM

AMANDA SULLIVAN
405.323.6423
AMANDA@NAIRED.COM



NAIRED

405.840.0600
NAIRED.COM

AMANDA SULLIVAN
405.323.6423
AMANDA@NAIRED.COM



DEMOGRAPHICS

	1 MILE	3 MILE	5 MILE
POPULATION	1,345	38,318	120,843
AVERAGE HOUSEHOLD INCOME	\$93,373	\$87,536	\$76,385
TOTAL HOUSEHOLDS	487	14,132	46,223

NAIRED

405.840.0600
NAIRED.COM

FOLLOW US @NAIRED_CRE



No warranty or representation, express or implied, is made as to the accuracy of the information contained herein, and the same is submitted subject to errors, omissions, change of price, rental or other conditions, prior to sale, lease, or financing, or withdrawal without notice, and of any special listing conditions imposed by our principals no warranties or representations are made as to the condition of the property or any hazards contained therein are any to be implied.