



Jefferson City, TN Retail Pad

500 E Broadway Blvd Jefferson City, Tennessee 37760

Property Highlights

- Lot 10 (B above) Aprox .69 Acres with >20K CPD
- 100 ft of frontage with high visibility on major arterial
- Accompanied by large retailers; Lowes, Walmart, and Big Lots

Property Description

- Parcel B is ideally suited for carwash, bank, oil change, automotive, or QSR. The site can be sold, ground leased or BTS.



Sale Price:

\$850,000

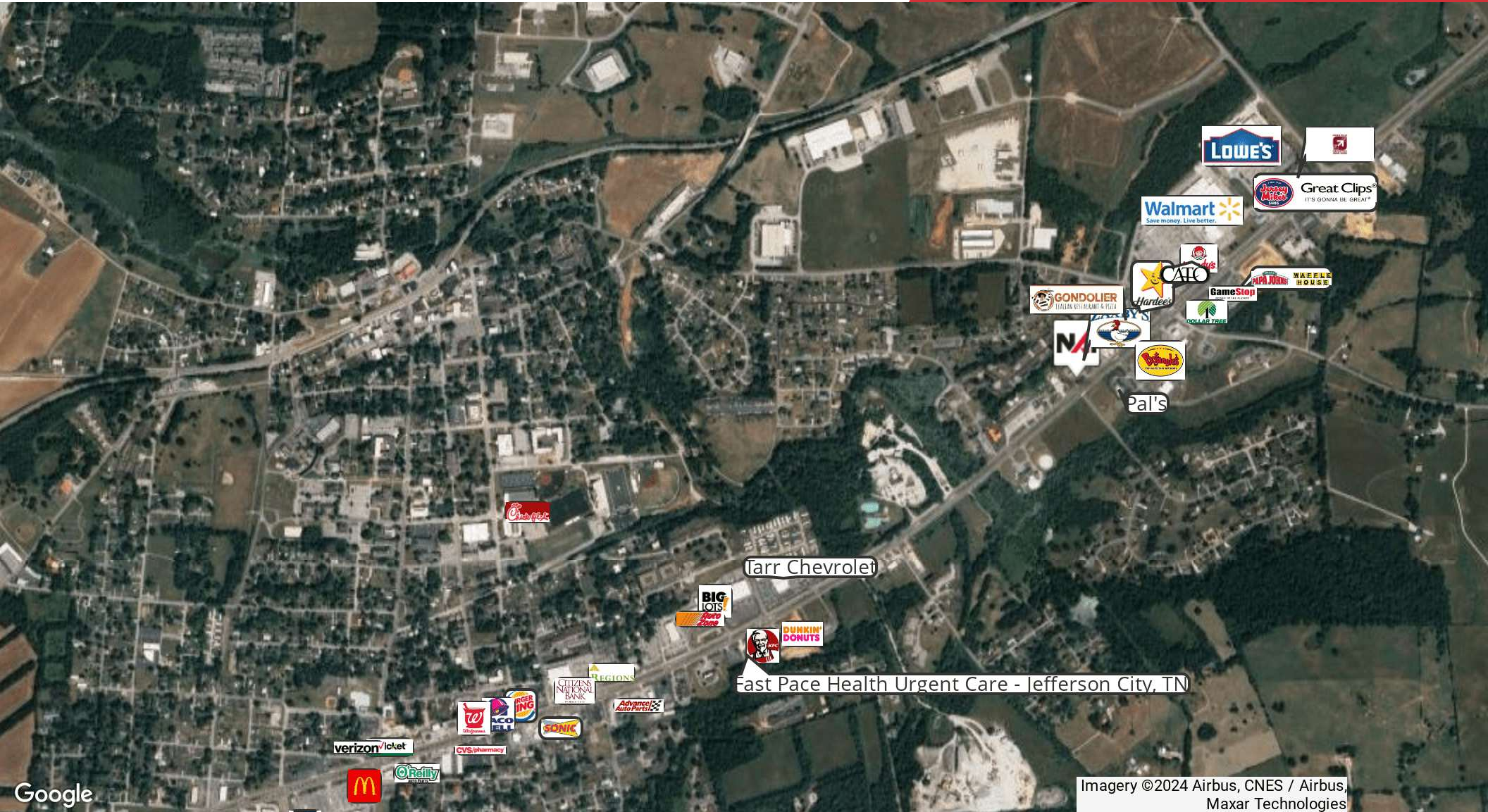
For More Information

Justin Sterling

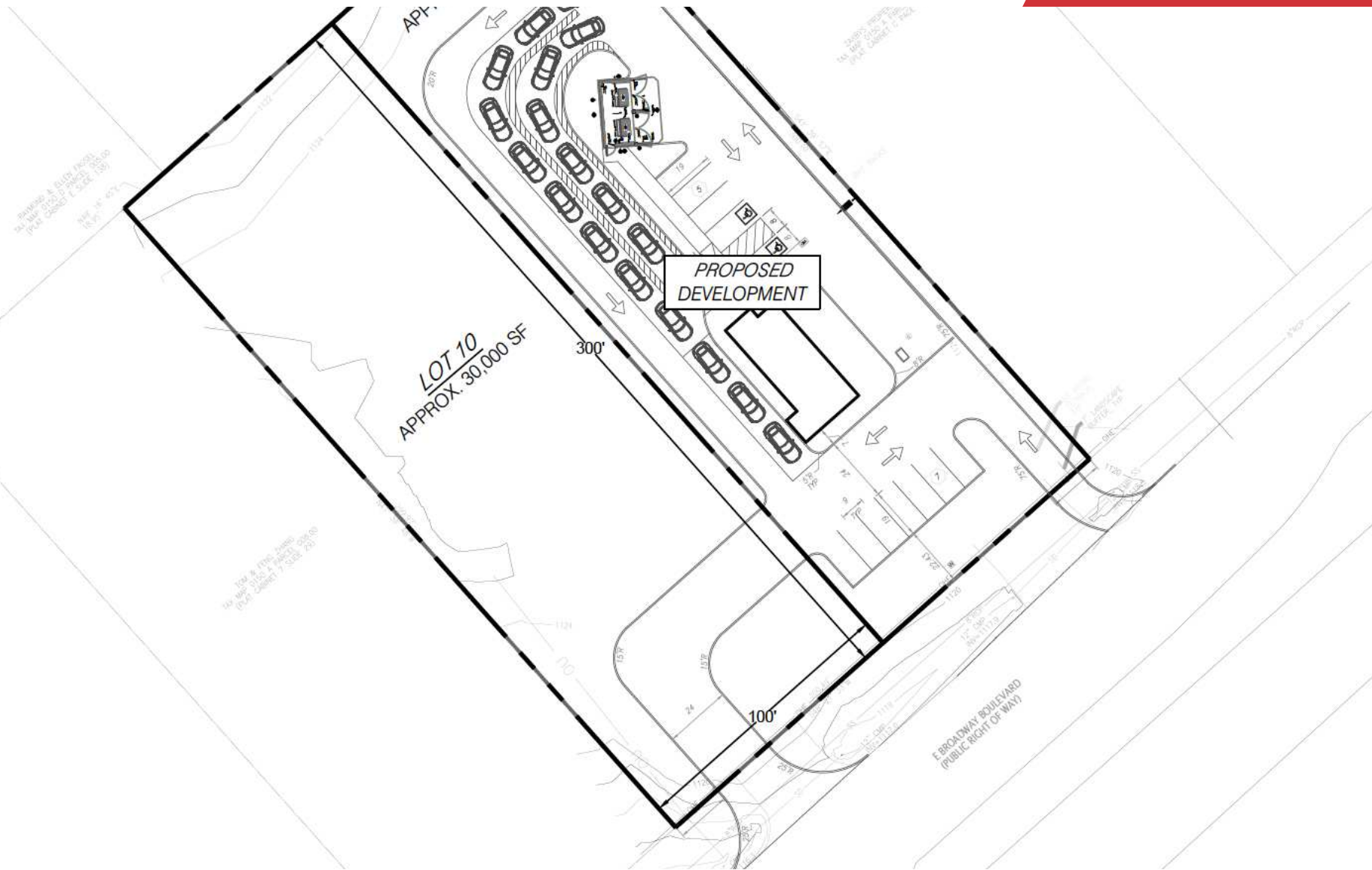
O: 865 531 6400
jsterling@koellamoore.com

Lauren Gabel

O: 865 531 6400
lgabel@koellamoore.com | TN #13164228



Imagery ©2024 Airbus, CNES / Airbus, Maxar Technologies





NO WARRANTY OR REPRESENTATION, EXPRESS OR IMPLIED, IS MADE AS TO THE ACCURACY OF THE INFORMATION CONTAINED HEREIN, AND THE SAME IS SUBMITTED SUBJECT TO ERRORS, OMISSIONS, CHANGE OF PRICE, RENTAL OR OTHER CONDITIONS, PRIOR SALE, LEASE OR FINANCING, WITHDRAWAL WITHOUT NOTICE, OR ANY SPECIAL LISTING CONDITIONS IMPOSED BY OUR PRINCIPALS. NO WARRANTIES OR REPRESENTATIONS ARE MADE AS TO THE CONDITION OF THE PROPERTY OR ANY HAZARDS CONTAINED THEREIN. UNLESS THERE IS AN AGREEMENT STIPULATING OTHERWISE, THE AFFILIATE BROKERS OR BROKERS NAMED WITHIN REPRESENT THE OWNER OR LANDLORD.

255 N Peters Road, Suite 101
Knoxville, TN 37923
865 531 6400 tel
koellamoore.com



Population	1 Mile	3 Miles	7 Miles
Total Population	1,989	11,277	36,659
Average Age	37	40	42
Average Age (Male)	35	39	41
Average Age (Female)	39	41	43
Households & Income	1 Mile	3 Miles	7 Miles
Total Households	769	4,331	14,214
# of Persons per HH	2.6	2.6	2.6
Average HH Income	\$75,189	\$80,016	\$87,233
Average House Value	\$192,807	\$220,890	\$261,410

Demographics data derived from AlphaMap

