

RETAIL PAD SITES

North Foster & IH-10

San Antonio, Texas 78244

Sale, Lease or Build-To-Suit

.95 to 5.42
Acres
Available

Platted
With All Utilities

**Constructed
REA Drive**

With Full Cross Access

Hard Corner

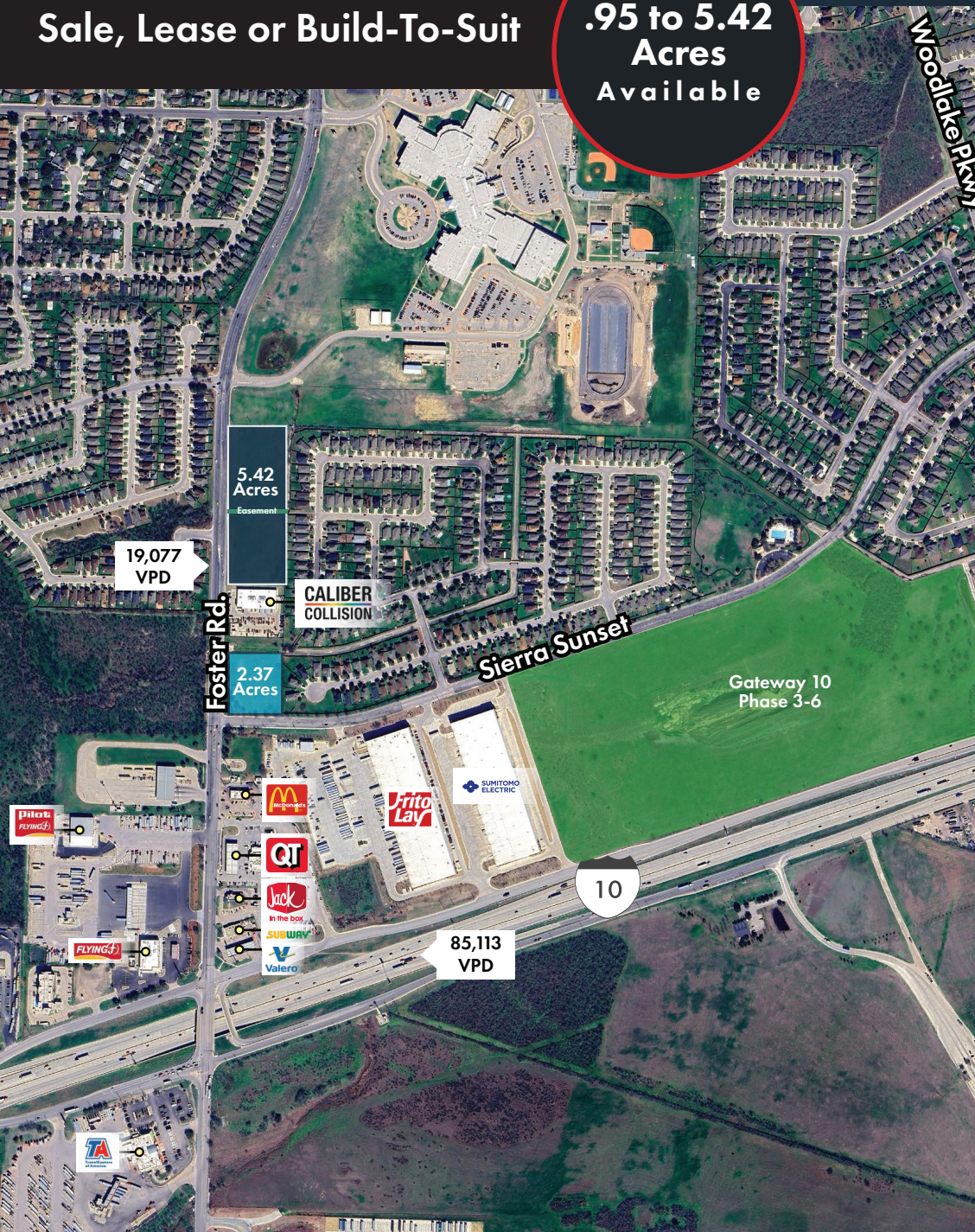
With Full Access Via Light
at Sierra Sunset

In-Line Pads

Full North & South Foster
Rd. Access Via Median
Cut

**For Sale/
Lease/Build-
to-Suit**

**Call Broker
For Pricing**



Harry Adams | Vice President
210.298.8548 | harry.adams@streamrealty.com

RETAIL PAD SITES

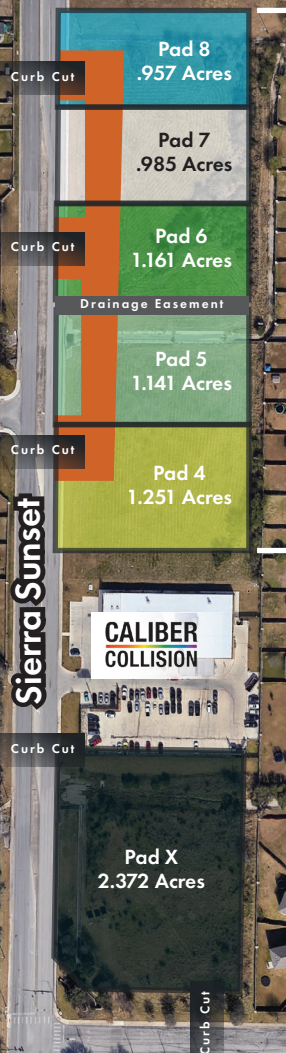
North Foster & IH-10

San Antonio, Texas 78244

Sale, Lease or Build-To-Suit

.95 to 5.42
Acres
Available

Utilities
In Place



5.495
Acres

Shared Access
Easements

Drainage
Easement

Legend

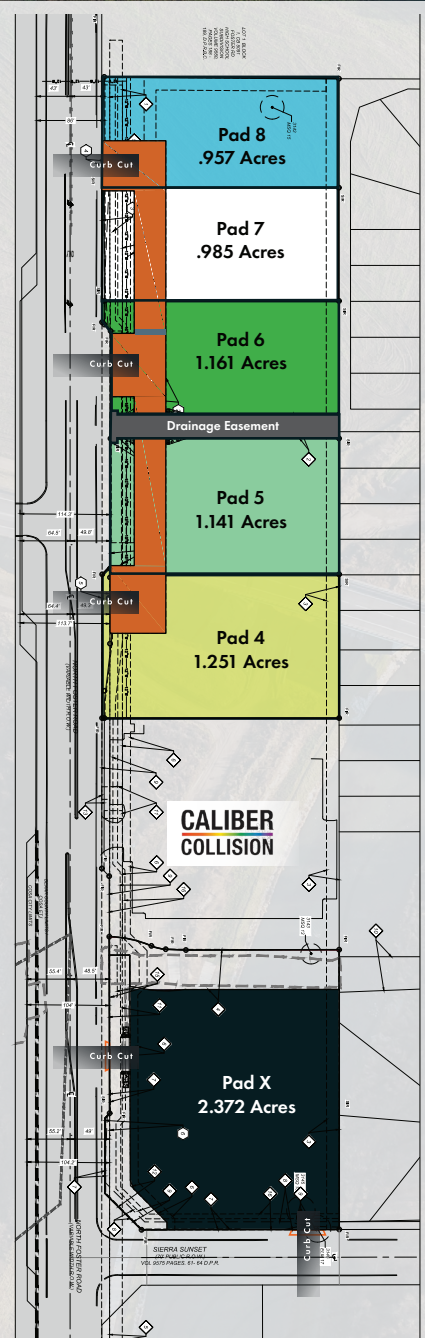
Pad 4: 1.251 Acres <<

Pad 5: 1.141 Acres <<

Pad 6: 1.161 Acres <<

Pad 7: .985 Acres <<

Pad 8: .957 Acres <<



Improvements
Exhibit

STREAM

Harry Adams | Vice President
210.298.8548 | harry.adams@streamrealty.com

RETAIL PAD SITES

North Foster & IH-10

San Antonio, Texas 78244

Sale, Lease or Build-To-Suit

.95 to 5.42
Acres
Available

Distance

From Sites

10

Immediate

1604

6 Minutes

35

8 Minutes

410

5 Minutes

87

9 Minutes

Downtown
San Antonio

8 Minutes

SA Int'l
Airport

9 Minutes

5.42
Acres

2.37
Acres

Gateway 10
Phase 3-6

Frito
Lay

LANCER

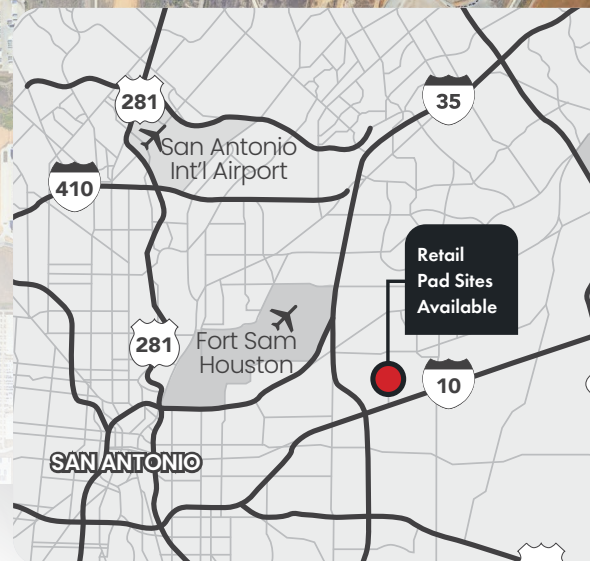
HOLT
TRUCK CENTERS

amazon

DOLLAR GENERAL

Southern Tire Mart

amazon



STREAM

Harry Adams | Vice President
210.298.8548 | harry.adams@streamrealty.com

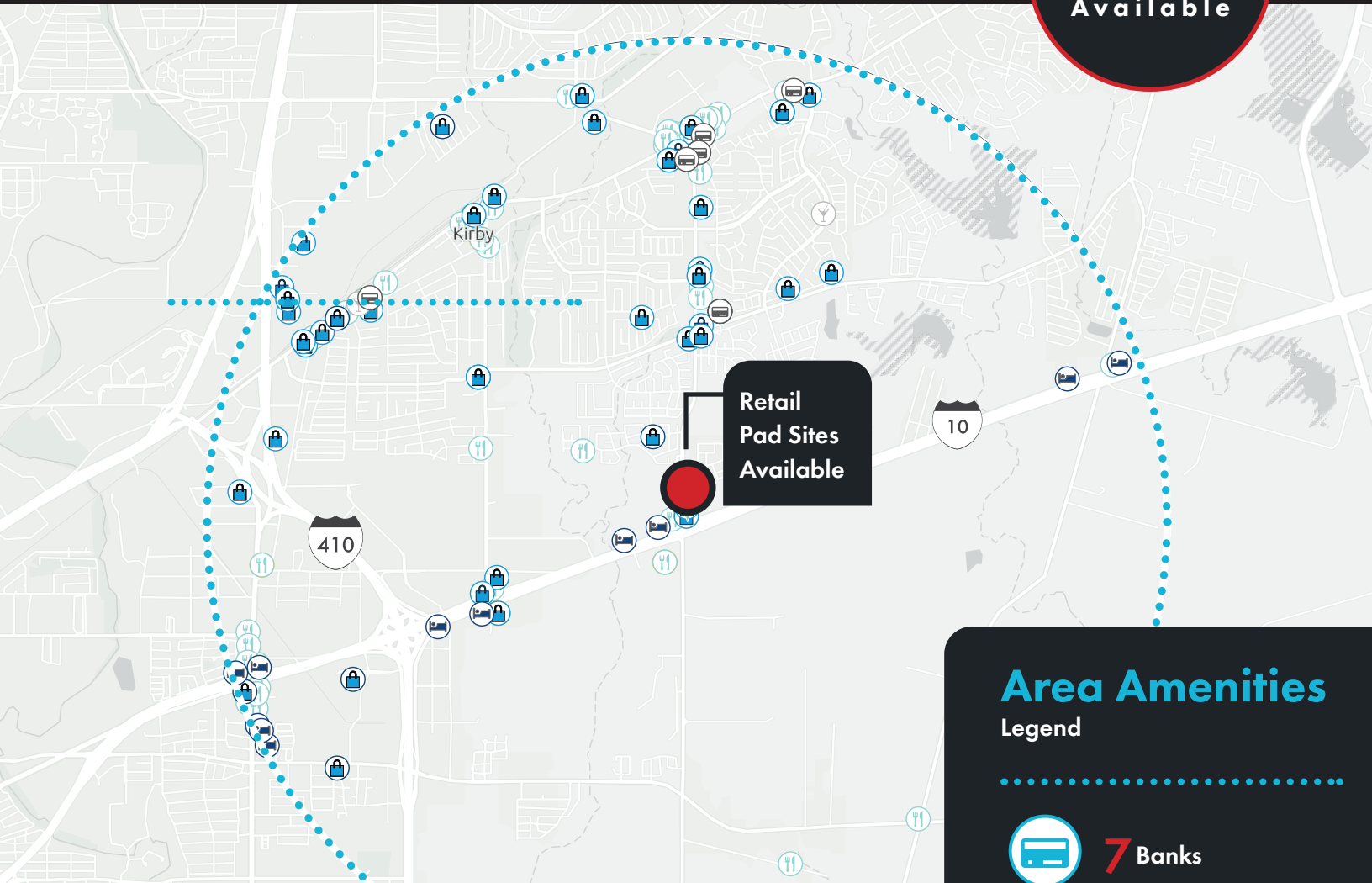
RETAIL PAD SITES

North Foster & IH-10

San Antonio, Texas 78244

Sale, Lease or Build-To-Suit

.95 to 5.42
Acres
Available



Demographics

Within 3 Miles

58,709
2022 Population

32.5
Median Age

\$78,355
Avg. HH Income

21,324
Avg. HH Income

87.9
Diversity Index

56.8
Some College +

77.7%
Family Households

China Grove

Area Amenities

Legend

-
-  **7** Banks
-  **2** Bars
-  **11** Hotels
-  **45** Shopping
-  **56** Restaurants
-  **3** Miles

**STREAM**

Harry Adams | Vice President
210.298.8548 | harry.adams@streamrealty.com