

# 2405 Commerce Avenue - Suite 500

Duluth, GA

## Key Facts

Property type	Industrial space
---------------	------------------

Building size	121,622 SF
---------------	------------

Space available	31,210 SF
-----------------	-----------



## Contact Us

Learn more about this property or schedule a tour by reaching out to our local investment and leasing officer.

**William Townsend**

+1 (787) 428-5088

[william.townsend@eqtpartners.com](mailto:william.townsend@eqtpartners.com)

# 2405 Commerce Avenue - Suite 500

Duluth, GA

## BUILDING SPECIFICATIONS

Available: February 2026

Total Building Size: 121,622 SF

Building Space Available: 31,210 SF

Current Office Space: 31,210 SF

Post Make-Ready Office Space: 6,582 SF

Building Depth: 135'

Configuration: Rear Load

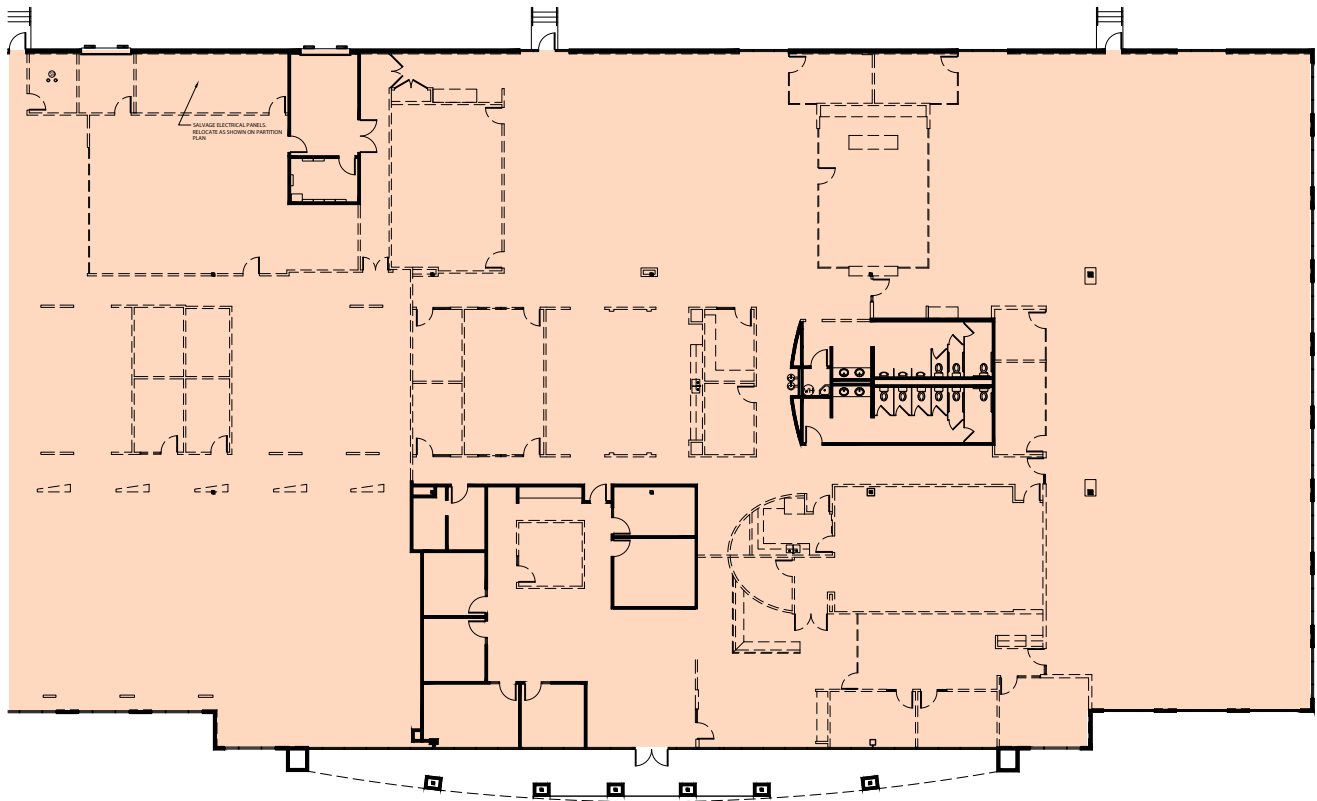
Deck Height: 21'

Truck Court Depth: 115'

Dock Doors: 3

Fire Protection: Wet Sprinkler System

## EXISTING PLAN



## Contact Us

Learn more about this property or schedule a tour by reaching out to our local investment and leasing officer.

**William Townsend**

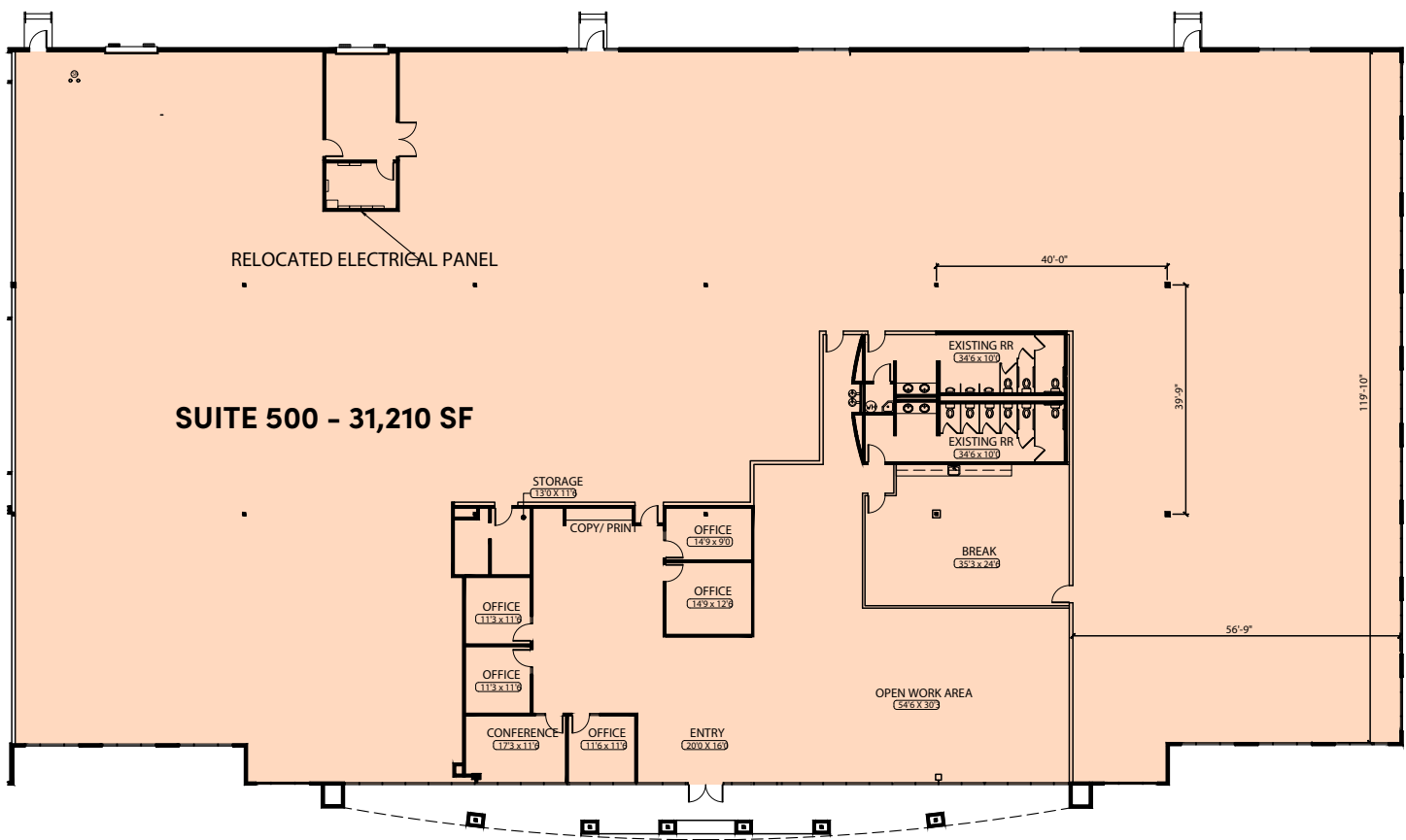
+1 (787) 428-5088

[william.townsend@eqtpartners.com](mailto:william.townsend@eqtpartners.com)

# 2405 Commerce Avenue - Suite 500

Duluth, GA

POST MAKE-READY PLAN



## Contact Us

Learn more about this property or schedule a tour by reaching out to our local investment and leasing officer.

**William Townsend**

+1 (787) 428-5088

[william.townsend@eqtpartners.com](mailto:william.townsend@eqtpartners.com)