

restaurants FOR LEASE

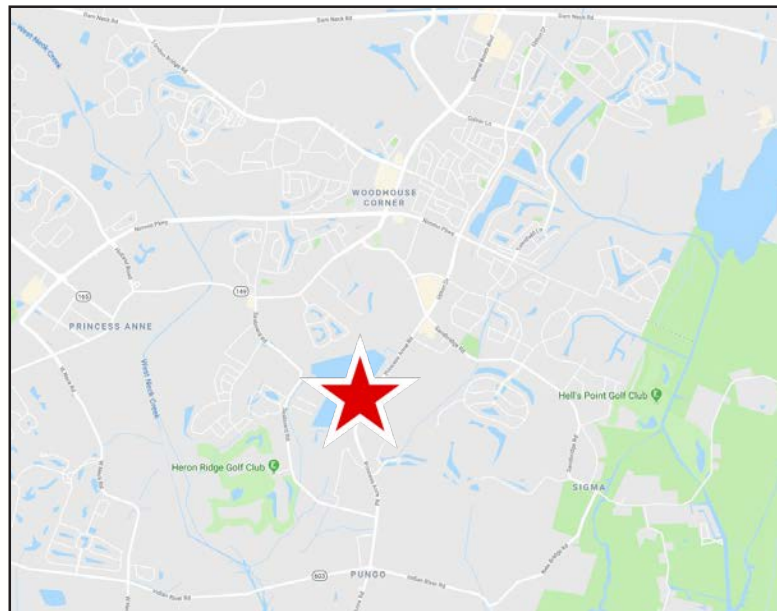


The Traditions at Sherwood Lakes | 2128 Locksley Arch, Virginia Beach, VA

PROPERTY FEATURES:

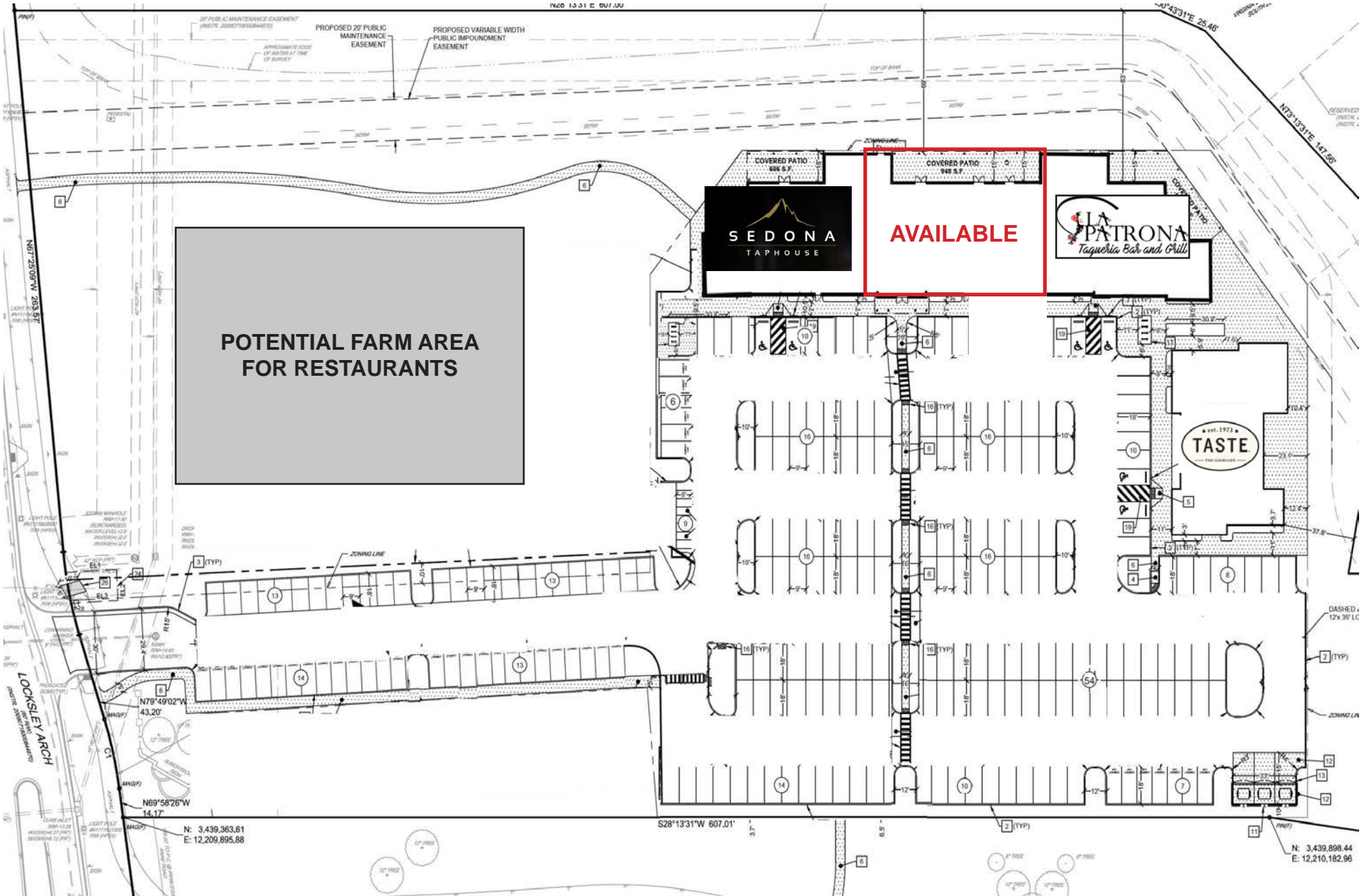
- **Join Taste Unlimited & Sedona Taphouse!**
- **Only ±4,131 SF of restaurant space available for experienced, local restaurant operators; outdoor patio space available with some suites.**
- **NEW LAKEFRONT DEVELOPMENT!** Located on 2.8 acres at the entrance of Sherwood Lakes; corner of Princess Anne Road & Locksley Arch.
- **Beautiful farmhouse/coastal design concept** to provide consumers with a lakefront outdoor dining venue with the possibility of additional land for a Farmer's Market (farm-to-table experience).
- **Less than a mile** from the new Harris Teeter at Sandbridge Commons and in close proximity to Sandbridge Beach & Knotts Island.
- **Growing, up-and-coming area with above average HH incomes within one - five mile radius!**

DEMOGRAPHICS	1 MILE	3 MILES	5 MILES
Est. Population	4,853	40,586	72,247
Avg HH Income	\$174,093	\$133,636	\$118,774
Households	1,544	13,167	24,035



Troy Parker
o: 757.222.0111
m: 757.407.9499
troy@parkerburnell.com

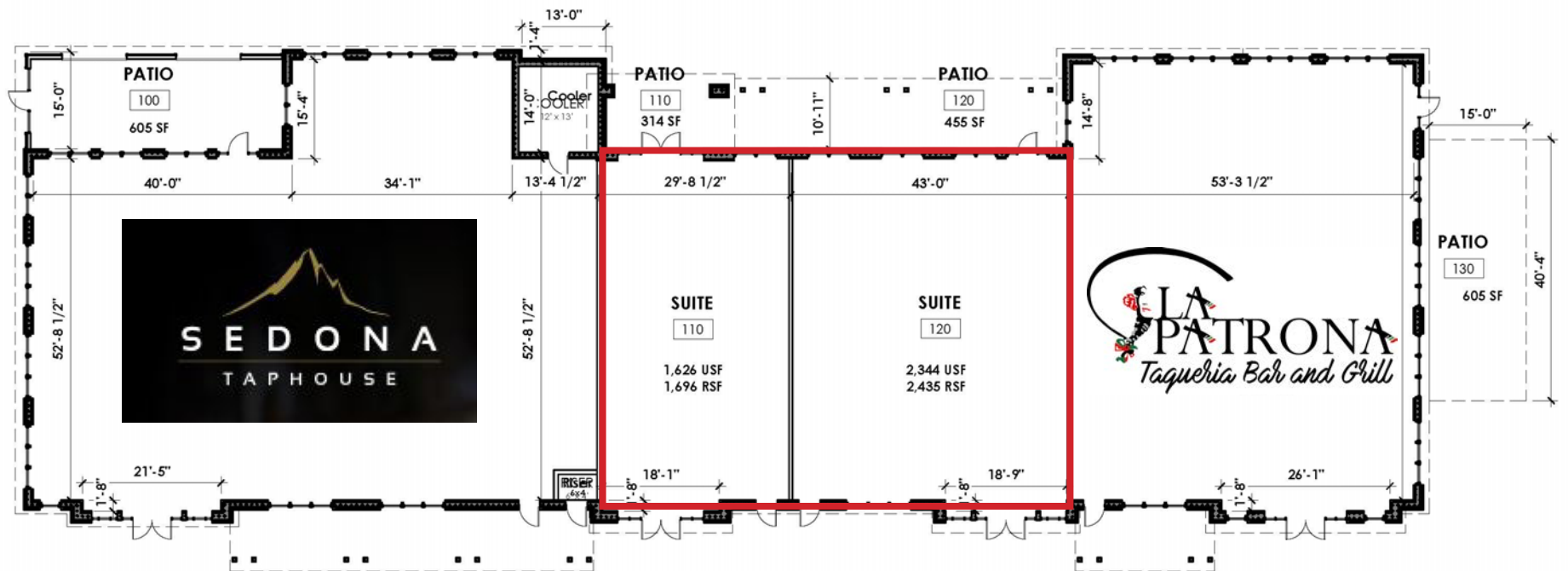
SITE PLAN



AERIAL



BUILDING PLAN



RENDERINGS

GROSS BUILDING AREA = 13,610



ELEVATIONS (TASTE)



4 BACK ELEVATION
3/16" = 1'-0"



3 FRONT ELEVATION
3/16" = 1'-0"



2 RIGHT ELEVATION
3/16" = 1'-0"



1 LEFT ELEVATION
3/16" = 1'-0"



7806 NC Hwy 751
Suite 110
Durham, NC 27713
919-493-8200
info@finleydesignarch.com
www.finleydesignarch.com

**CONCEPT
DESIGN**

**TASTE
SHERWOOD LAKES
VIRGINIA BEACH, VA**

REVISIONS

PROJECT: 19008
DATE: 7/29/22
ELEVATIONS
A3.0

AERIAL

