

# AVAILABLE

18,858 SF OFFICE/WAREHOUSE

6551 Moffett Road | Mobile



## Property Features

- 16,858 SF warehouse; 2,500 SF office
- Office includes office area, 2 restrooms and large break room area
- 2,423 SF additional free-standing building that can be used as equipment storage
- 2.88 AC parcel
- Two 10-ton cranes
- 30' eave height
- 240V and 480V 3 phase
- 4 dock doors (8' x 9')
- 1 large dock door (22' x 16')
- Large concrete yard area

**SALE PRICE: \$1,999,000**

**LEASE RATE: \$20,000/ MONTH NNN  
(\$11.28/PSF)**



**Josh W. Hall**

251.689.9002 | [jwhall@cre-mobile.com](mailto:jwhall@cre-mobile.com)

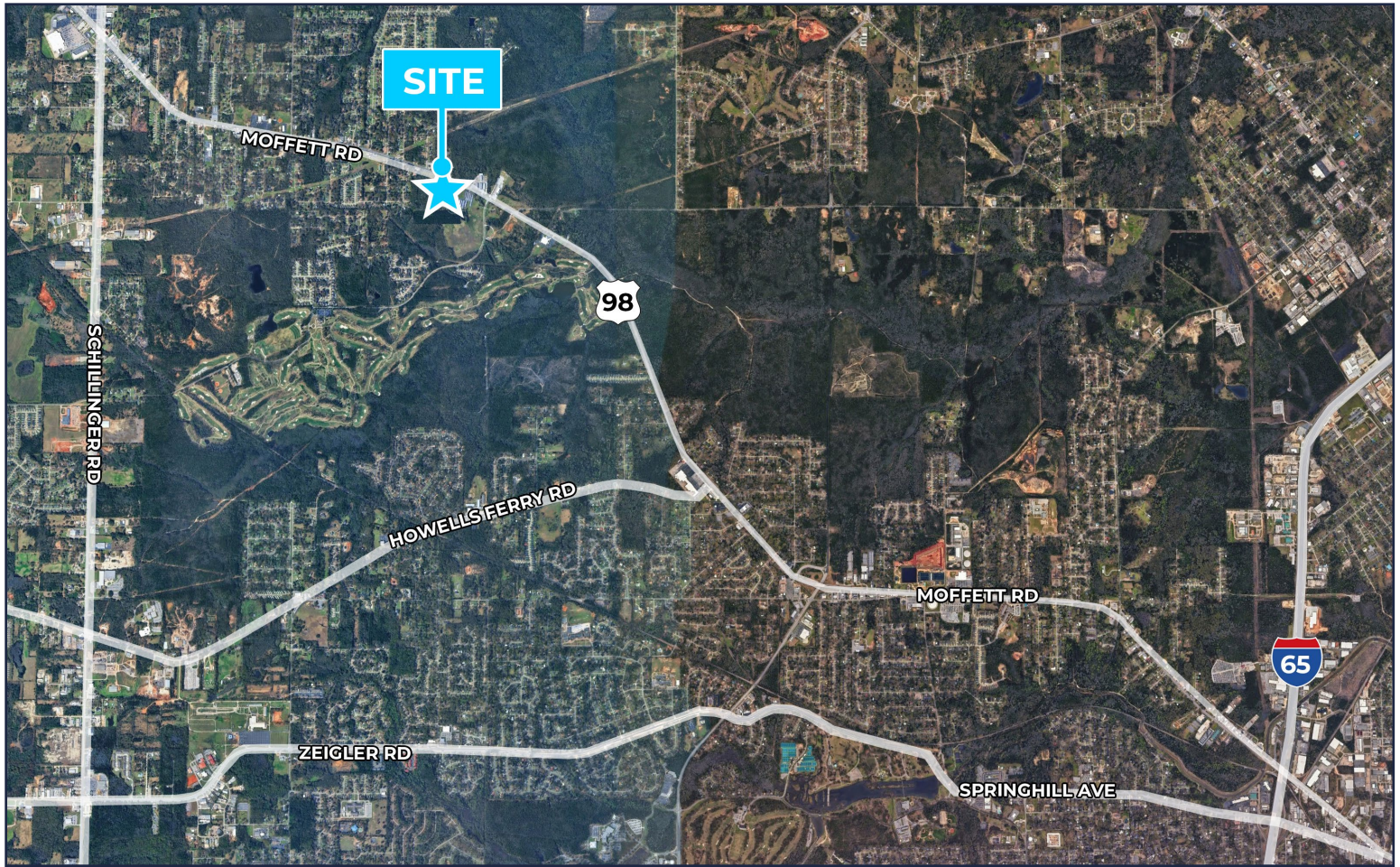
**Pete Riehm, SIOR**

251.442.4349 | [priehm@cre-mobile.com](mailto:priehm@cre-mobile.com)



**CRE  
MOBILE**  
CRE-MOBILE.COM





NO WARRANTY OR REPRESENTATION, EXPRESS OR IMPLIED, IS MADE AS TO THE ACCURACY OF THE INFORMATION CONTAINED HEREIN, AND THE SAME IS SUBMITTED SUBJECT TO ERRORS, OMISSIONS, CHANGE OF PRICE, RENTAL OR OTHER CONDITIONS, PRIOR SALE, LEASE OR FINANCING, OR WITHDRAWAL WITHOUT NOTICE, AND OF ANY SPECIAL LISTING CONDITIONS IMPOSED BY OUR PRINCIPALS. NO WARRANTIES OR REPRESENTATIONS ARE MADE AS TO THE CONDITION OF THE PROPERTY NOR ANY HAZARDS CONTAINED THEREIN ARE ANY TO BE IMPLIED.



