



Commercial Space 478 Onderdonk Avenue

1824 Harman, Ridgewood, NY 11385



HIGHLINE RESIDENTIAL



Tatiana Shreider

Highline Residential

10 37th St, Suite 4th Floor, New York, NY 10018

t.shreider@hlresidential.com

(212) 960-8740

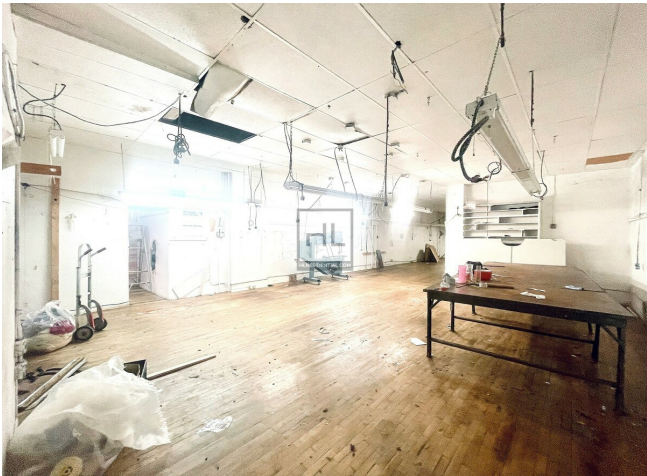


Commercial Space 478 Onderdonk Avenue

\$31.56 /SF/YR

2,200 SF Storefront Commercial Space in Prime Ridgewood. Asking rate is \$7,000/ month. Manufacturing license. Perfect for a distillery/ brewery/ restaurant/ retail space. Great location in blooming Ridgewood, close to L M trains. Contact Tatiana for more details....

- Storefront
- Great location
- Retail
- Industrial



Rental Rate:	\$31.56 /SF/YR
Property Type:	Multifamily
Property Subtype:	Apartment
Apartment Style:	Low Rise
Year Built:	1930
Walk Score ®:	89 (Very Walkable)
Transit Score ®:	96 (Rider's Paradise)
Rental Rate Mo:	\$2.63 USD/SF/MO

1st Floor

Space Available	2,200 SF
Rental Rate	\$31.56 /SF/YR
Date Available	Now
Service Type	TBD
Space Type	Relet
Space Use	Retail
Lease Term	Negotiable

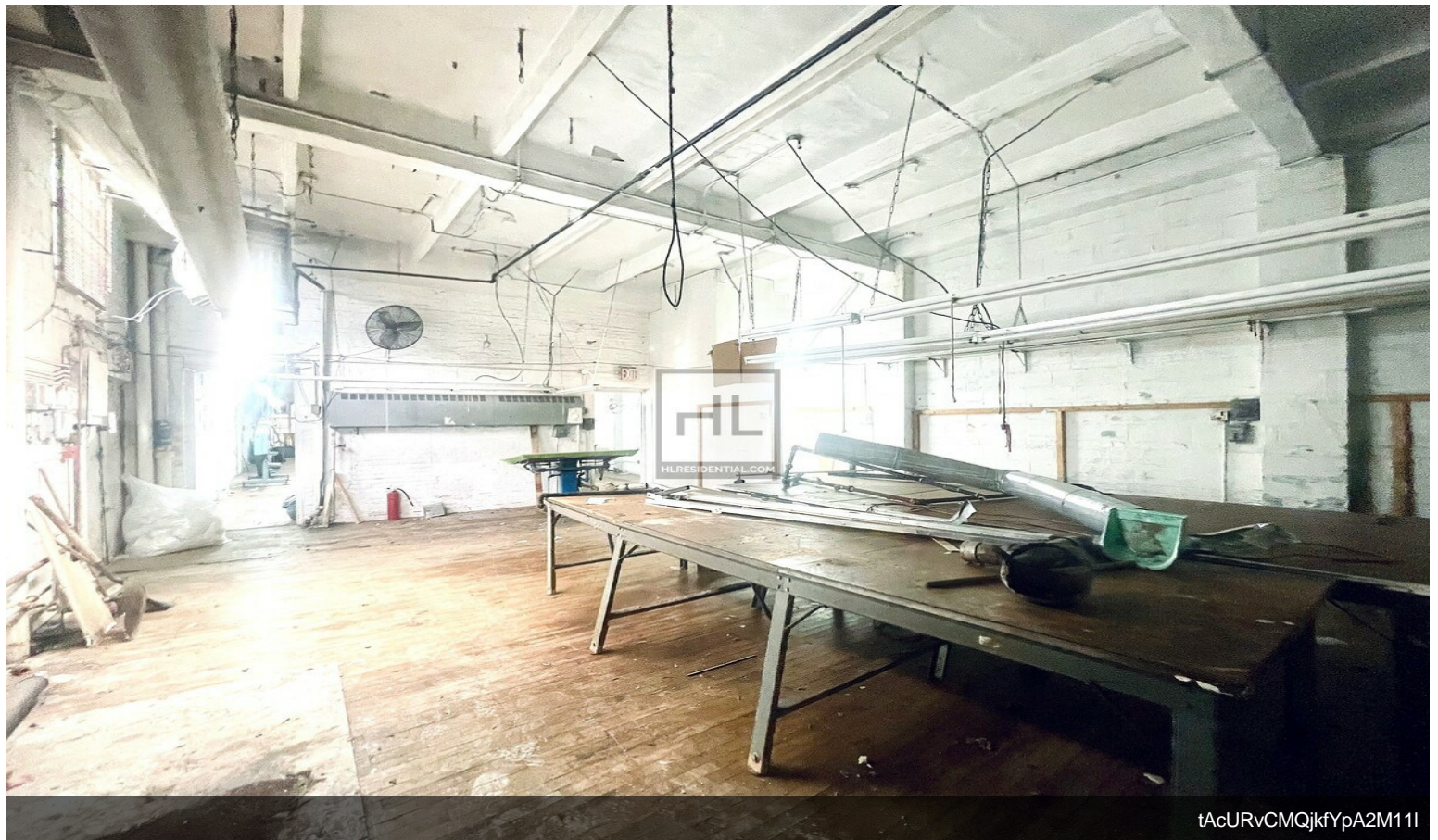
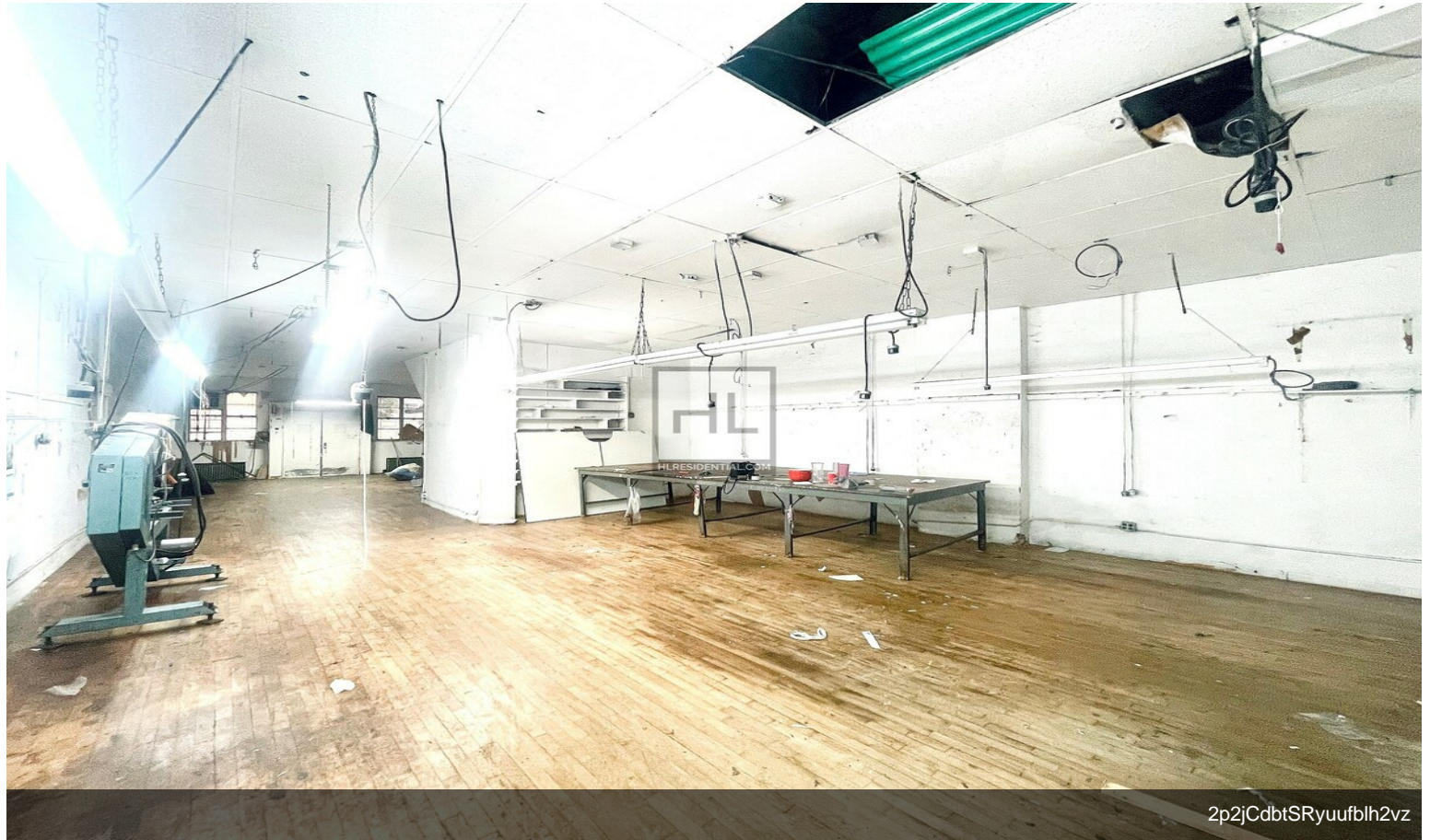
2,200 SF Storefront Commercial Space in Prime Ridgewood. Asking rate is \$5,800/ MO.Space is zoned for Retail as well as Industrial/ Manufacturing use. Perfect for a distillery/ brewery/ restaurant/ convenience store. Great location in blooming Ridgewood, close to L M trains. Contact Tatiana for more details!



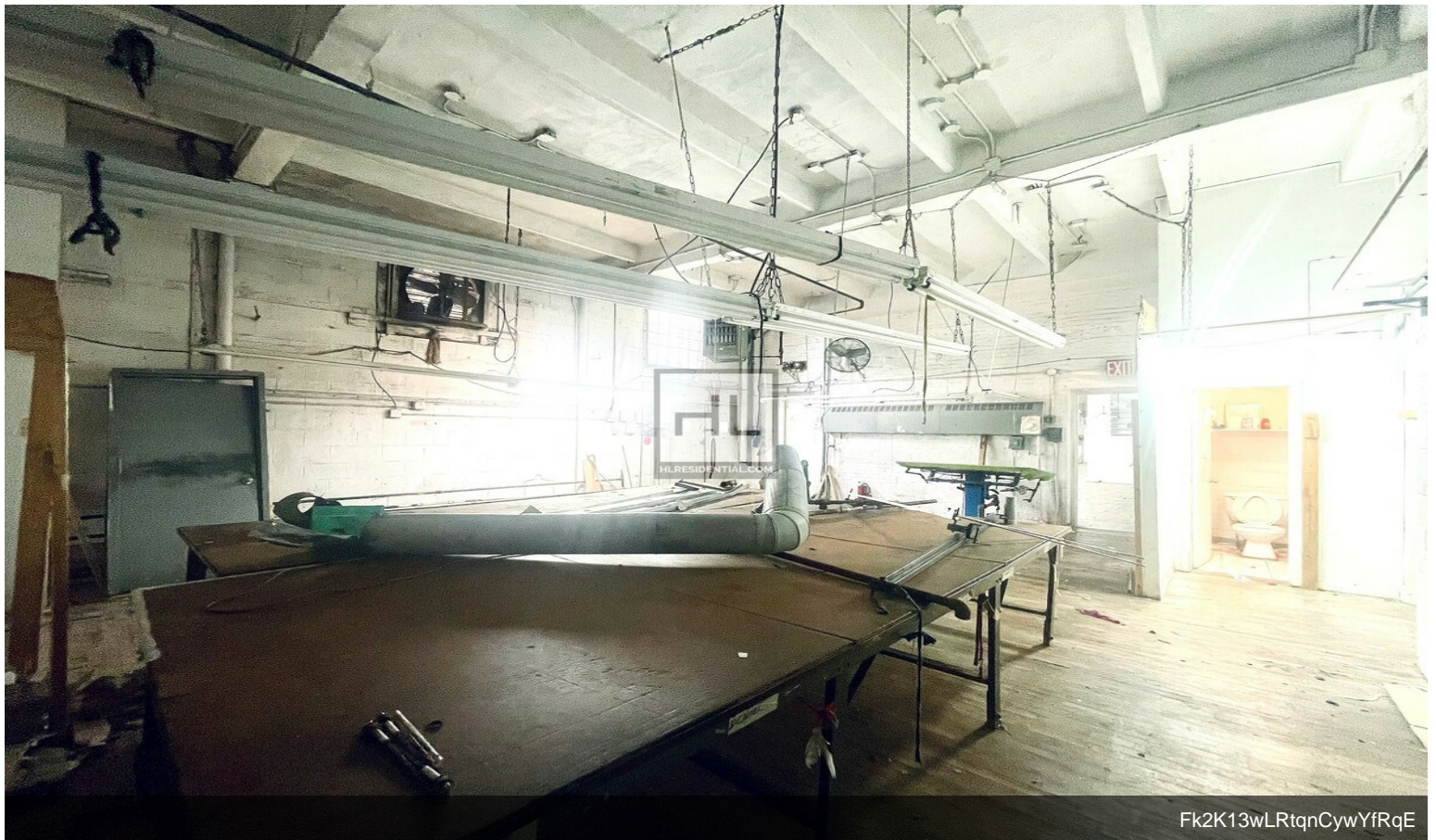
1824 Harman, Ridgewood, NY 11385

2,200 SF Storefront Commercial Space in Prime Ridgewood. Asking rate is \$7,000/ month.
Manufacturing license.
Perfect for a distillery/ brewery/ restaurant/ retail space.
Great location in blooming Ridgewood, close to L M trains.
Contact Tatiana for more details.

Property Photos



Property Photos



Property Photos



4LsYPV6R9i2RIWiMVXBj



HZMCX96xSe6GXa0obhX8

Property Photos



MYcJEIBWR3yN5vcauoqu

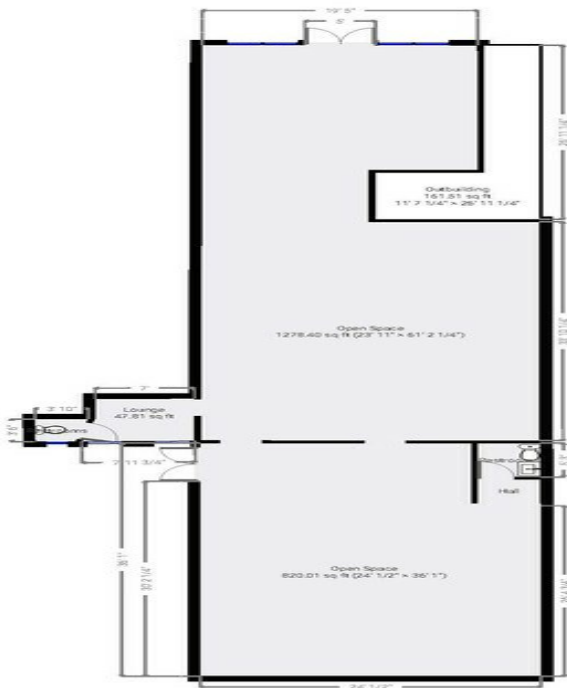
Commercial Space 478 Onderdonk Avenue

478 Onderdonk Avenue . 11385 Ridgewood, NY, USA
TOTAL AREA: 2451.53 sq ft - LIVING AREA: 2451.53 sq ft - FLOORS: 1 - ROOMS: 5

m magicplan
SUBMITTED BY Tatiana Shreider
t.shreider@hlresidential.com

▼ Ground Floor

TOTAL AREA: 2451.53 sq ft - LIVING AREA: 2451.53 sq ft - ROOMS: 5



THIS FLOORPLAN IS PROVIDED WITHOUT WARRANTY OF ANY KIND. SENSOPIA DISCLAIMS ANY WARRANTY INCLUDING, WITHOUT LIMITATION, SATISFACTORY QUALITY OR ACCURACY OF DIMENSIONS.