

3199 LAPEER ROAD
AUBURN HILLS, MICHIGAN



**SIGNATURE
ASSOCIATES**
KNOW SIGNATURE | KNOW RESULTS

INDUSTRIAL FOR SALE OR LEASE
46,854 Square Feet Available



NOW AVAILABLE FOR LEASE!

PROPERTY FEATURES

- 46,854 square feet available
- 4,854 square feet office
- 19'7" – 26'6" clear height
- (2) 12' x 14', 16' x 20' grade level doors
- 3600 amps, 480 volts power
- Located on 9.510 acres
- First-class facility with room for expansion
- Renovated in 2026
- Great manufacturing building
- Heavy power and buss duct
- Lease Rate: \$8.95/sq. ft. NNN
- Sale Price: \$6,950,000 (\$148.33/sq. ft.)



For more information, please contact:

JOE HAMWAY
(248) 948 0113

jhamway@signatureassociates.com

GREG HUDAS
(248) 799 3162

ghudas@signatureassociates.com

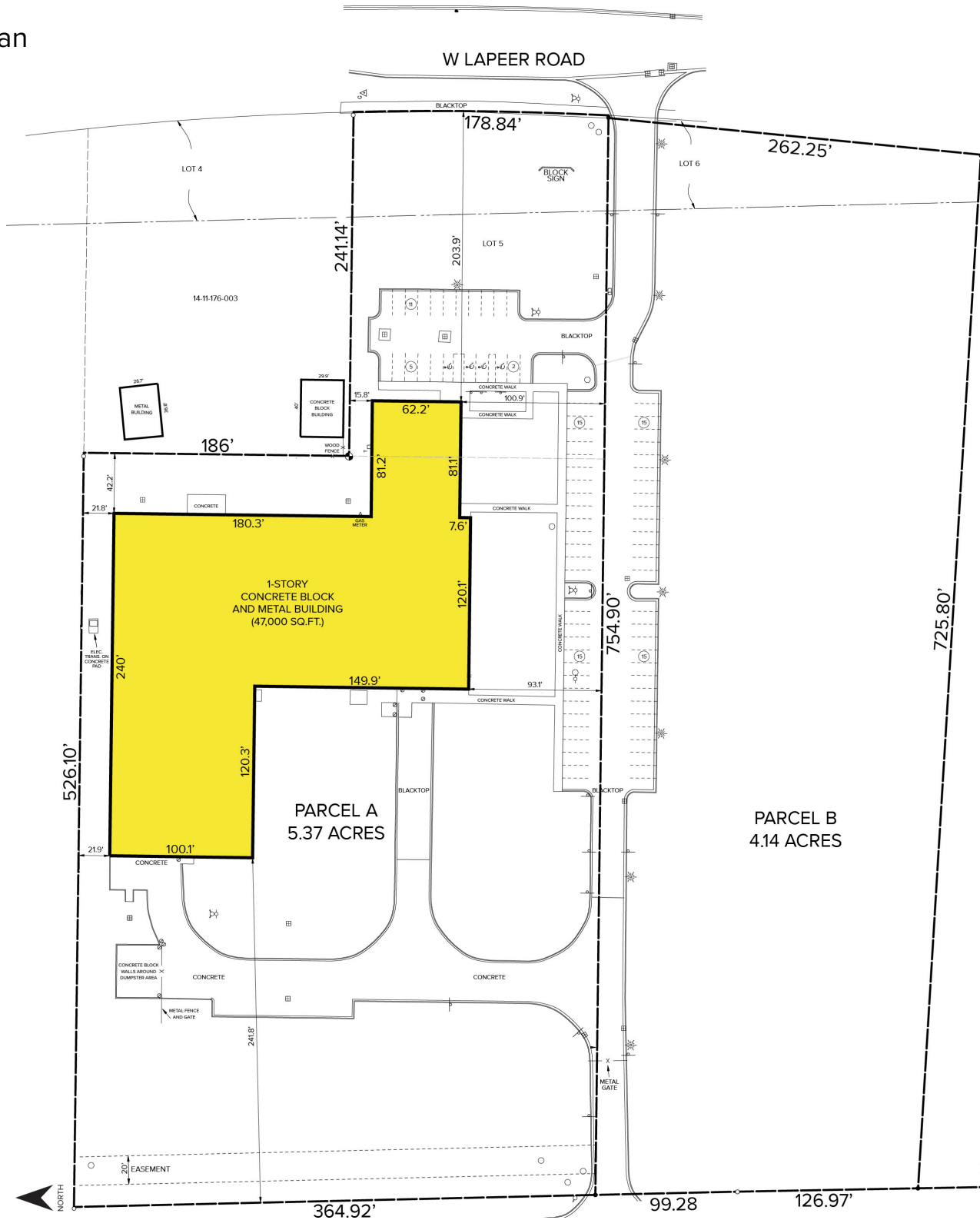
SIGNATURE ASSOCIATES
One Towne Square, Suite 1200
Southfield, MI 48076
www.signatureassociates.com

3199 Lapeer Road – Auburn Hills, Michigan

Industrial For Sale or Lease

46,854
Square Feet
AVAILABLE

Site Plan



For more information, please contact:

JOE HAMWAY
(248) 948 0113

jhamway@signatureassociates.com

GREG HUDAS
(248) 799 3162

ghudas@signatureassociates.com

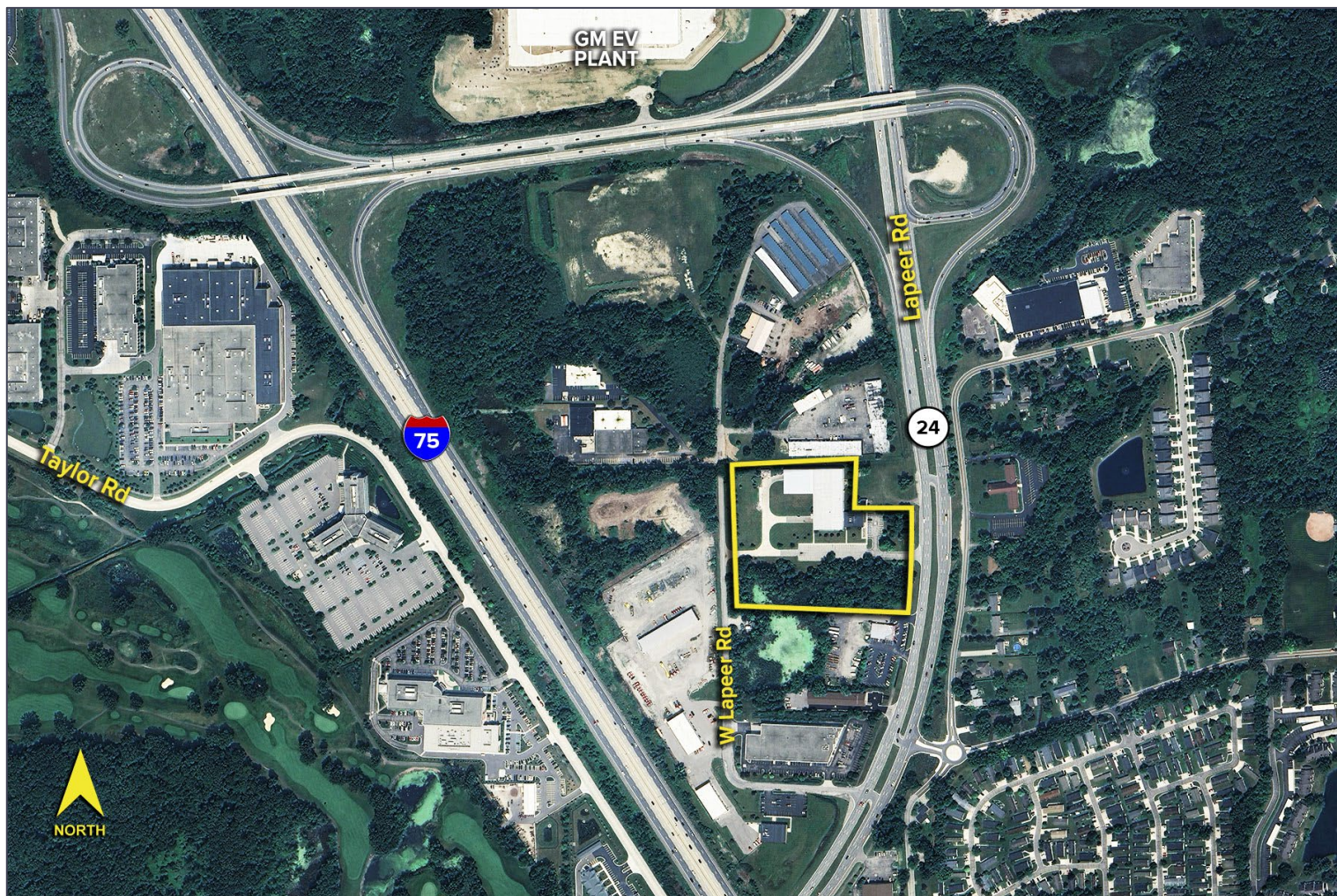
SIGNATURE ASSOCIATES
One Towne Square, Suite 1200
Southfield, MI 48076
www.signatureassociates.com

3199 Lapeer Road – Auburn Hills, Michigan

Industrial For Sale or Lease

46,854
Square Feet
AVAILABLE

Aerial



For more information, please contact:

JOE HAMWAY

(248) 948 0113

jhamway@signatureassociates.com

GREG HUDAS

(248) 799 3162

ghudas@signatureassociates.com

SIGNATURE ASSOCIATES

One Towne Square, Suite 1200

Southfield, MI 48076

www.signatureassociates.com

Information is subject to verification and no liability for errors or omissions is assumed. Price is subject to change and listing withdrawal.