

# FORMER KROGER CENTER

1505 East Broadway, Campbellsville, KY 42718

## PROPERTY

## HIGHLIGHTS

Demographics	1 mile	3 miles	5 miles
Population	3,071	15,526	19,819
Avg. HH Income	\$104,209	\$80,387	\$79,199
Total Households	1,347	6,138	7,834

- The country's largest supermarket chain by revenue, second-largest general retailer, and twenty-third largest company
- Kroger is also the fifth largest retailer in the world
- Kroger-branded grocery stores are located throughout the Midwestern and Southern US

## NOTES

- GLA: 34,000 SF
- Traffic Count: 19,407 VPD East Broadway St.



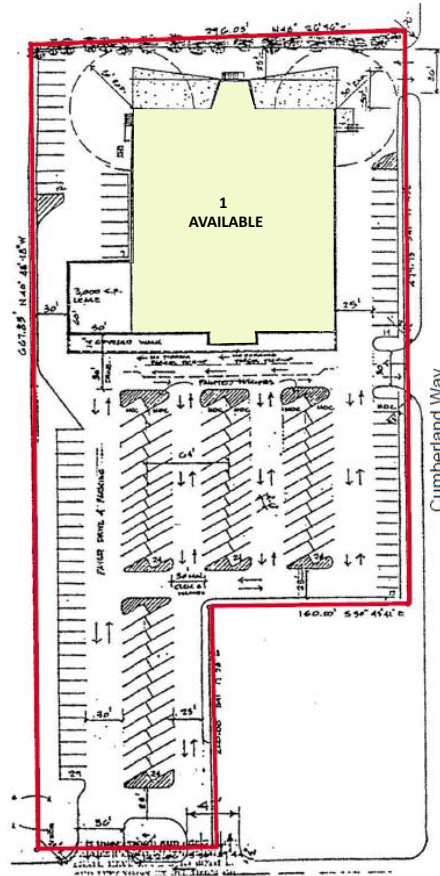
**MASON**  
ASSET MANAGEMENT

T: 516 371.5858  
E: [leasing@masonam.com](mailto:leasing@masonam.com)  
150 Great Neck Road Suite 402  
Great Neck, NY, 11021  
[www.masonam.com](http://www.masonam.com)

# FORMER KROGER CENTER

1505 East Broadway, Chambellville, KY 42718

## SITE PLAN



EAST BROADWAY 19,407 VPD



<u>Suite</u>	<u>Tenant</u>	<u>Square Feet</u>
1	Available	34,000



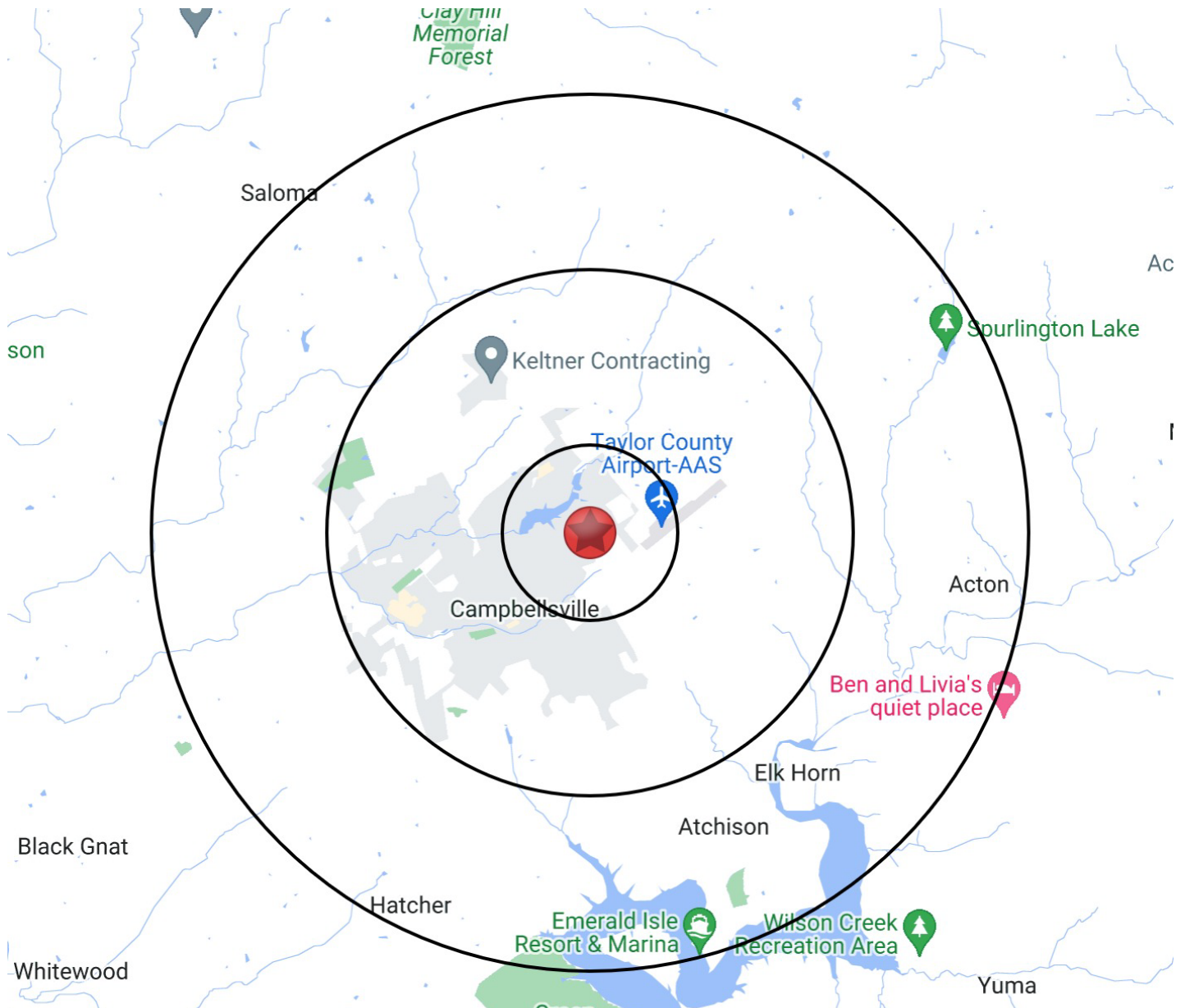
**MASON**  
ASSET MANAGEMENT

T: 516 371.5858  
E: [leasing@masonam.com](mailto:leasing@masonam.com)  
150 Great Neck Road Suite 402  
Great Neck, NY, 11021  
[www.masonam.com](http://www.masonam.com)

# FORMER KROGER CENTER

1505 East Broadway, Chambellville, KY 42718

## RADIUS MAP



**MASON**  
ASSET MANAGEMENT

T: 516 371.5858  
E: [leasing@masonam.com](mailto:leasing@masonam.com)  
150 Great Neck Road Suite 402  
Great Neck, NY, 11021  
[www.masonam.com](http://www.masonam.com)