

OFFICE SPACE
FOR LEASE

DFW
MIDPOINT

TOTAL SF
69,595


TRANSWESTERN
REAL ESTATE
SERVICES

3301 AIRPORT FWY

BEDFORD, TX 76021



LEASING INFORMATION:

TREVOR BROWN

512.750.3550

trevor.brown@transwestern.com

THERON BRYANT

817.259.3512

theron.bryant@transwestern.com

The information provided herein was obtained from sources believed reliable; however, Transwestern makes no guarantees, warranties or representations as to the completeness of accuracy thereof. The presentation of this property is submitted subject to errors, omissions, change of price or conditions, prior to sale or lease, or withdrawal without notice. Copyright © 2024 Transwestern.

3301 AIRPORT FWY

BEDFORD, TX 76021



Lease Rate: Contact Broker

Space Available: 1,626 SF up to 10,203 SF

Available Suites:

- Suite 103: 6,643 RSF
- Suite 140: 3,005 RSF
- Suite 150: 5,448 RSF
- Suite 200: 9,565 RSF
- Suite 230: 3,286 RSF
- Suite 235: 1,626 RSF
- Suite 300: 10,203 RSF
- Suite 315: 2,238 RSF
- Suite 340: 5,054 RSF
- Suite 350: 3,919 RSF

Property Amenties:

- New HVAC & Energy Management System installed in Q4 2020
- Fiber-Optic Business Service with AT&T/Spectrum
- High-Grade Air Ventilation System with MERV-13 Filters
- Free Surface Parking
- Local Ownership + On-Site Management

3301 AIRPORT FWY

BEDFORD, TX 76021

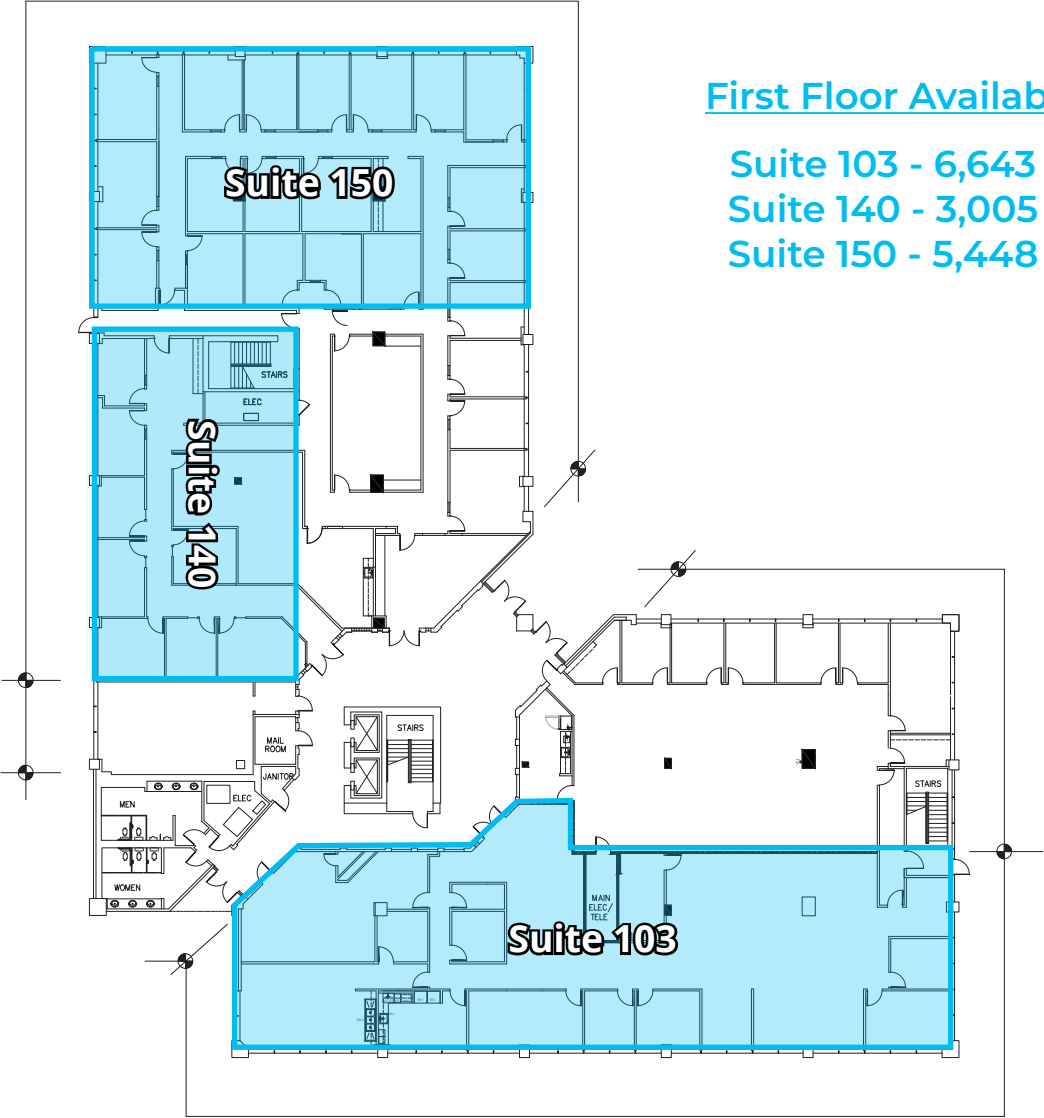


Interior Photos



3301 AIRPORT FWY

BEDFORD, TX 76021

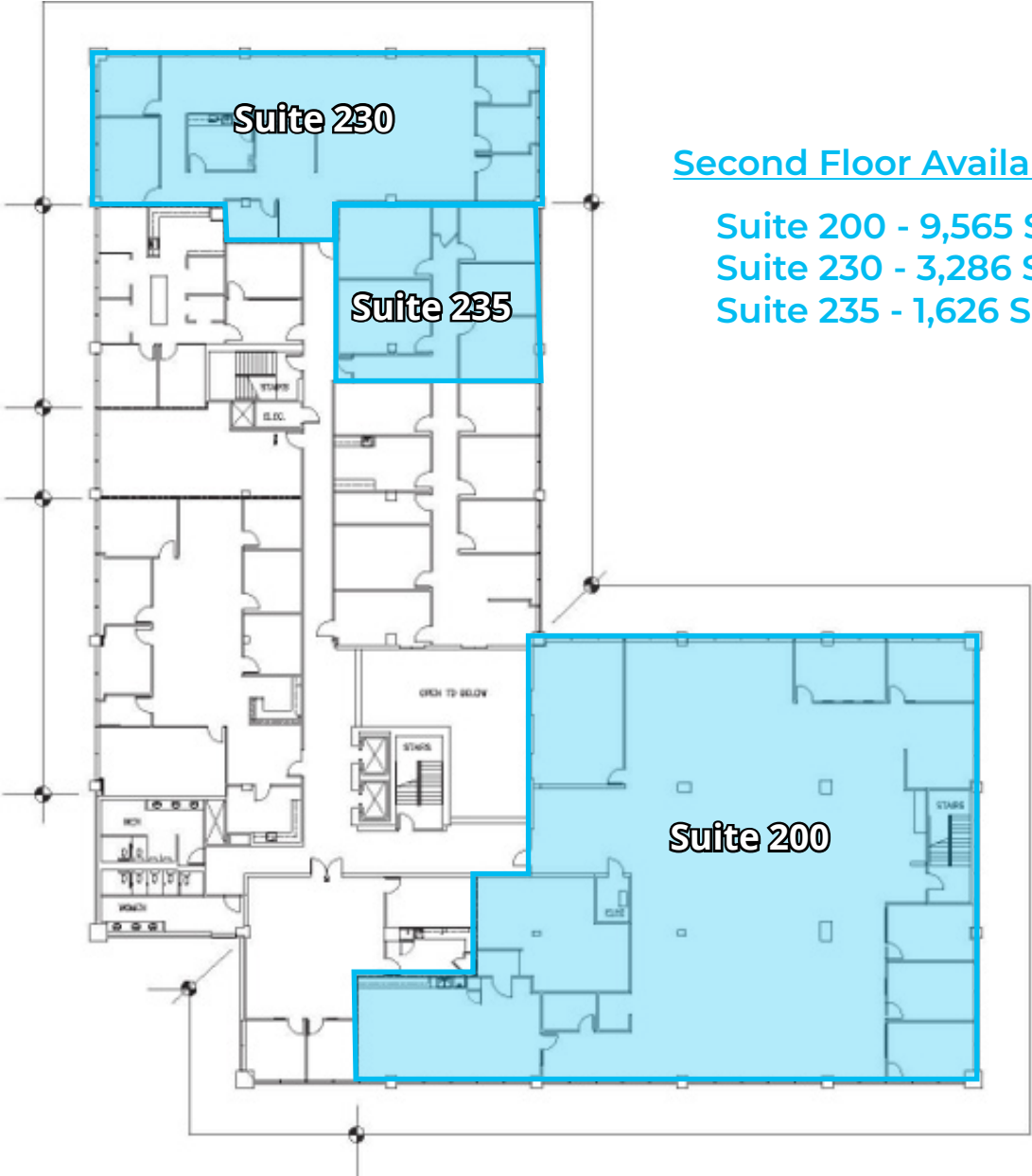


First Floor Availability

- Suite 103 - 6,643 SF
- Suite 140 - 3,005 SF
- Suite 150 - 5,448 SF

3301 AIRPORT FWY

BEDFORD, TX 76021

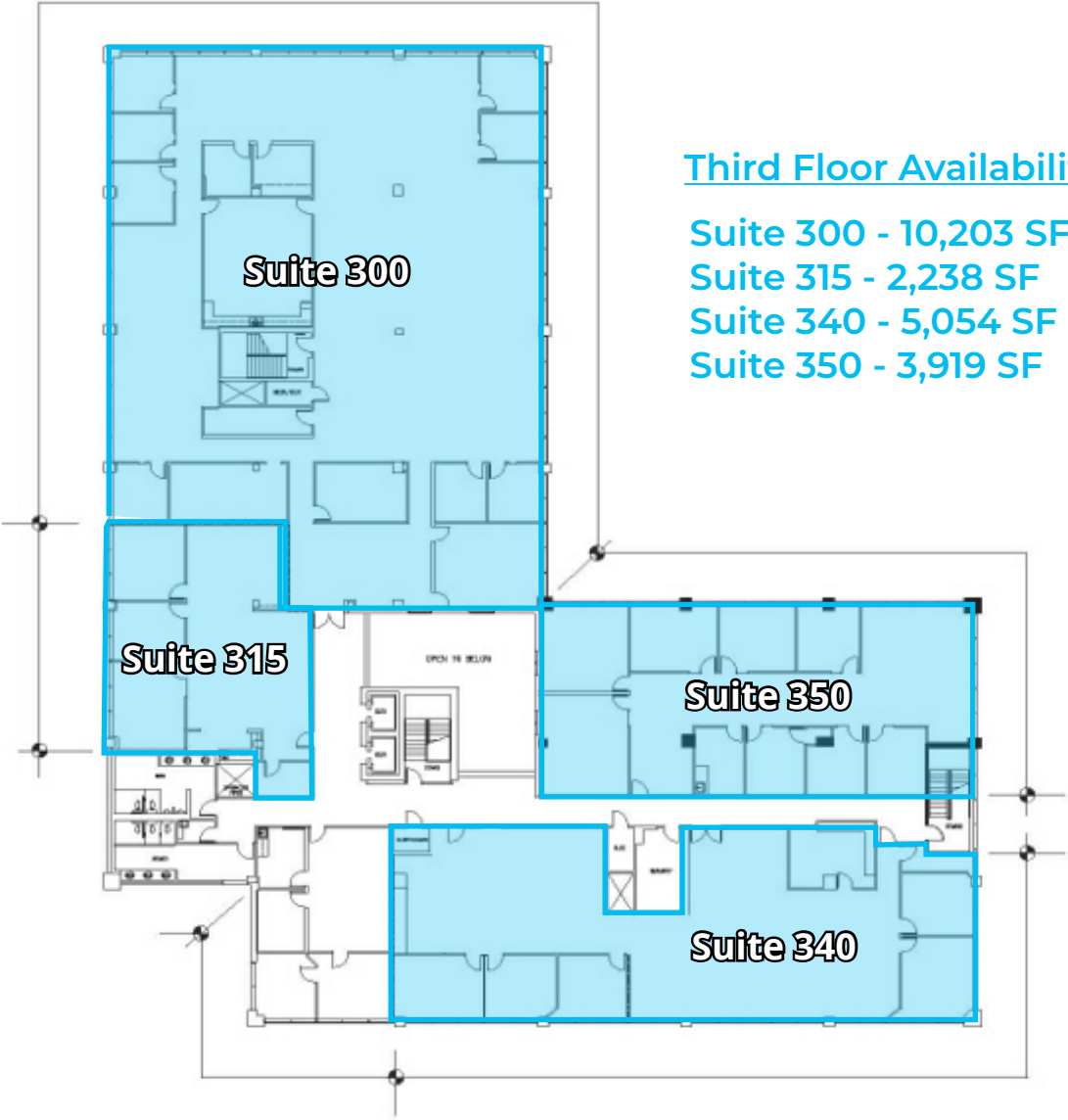


Second Floor Availability

- Suite 200 - 9,565 SF
- Suite 230 - 3,286 SF
- Suite 235 - 1,626 SF

3301 AIRPORT FWY

BEDFORD, TX 76021



Third Floor Availability

- Suite 300 - 10,203 SF
- Suite 315 - 2,238 SF
- Suite 340 - 5,054 SF
- Suite 350 - 3,919 SF

3301 AIRPORT FWY

BEDFORD, TX 76021

LOCATION OVERVIEW

- Property located south of DFW International Airport
- Excellent access to 2-way interchange at Hwy 183 & Hwy 121
- 10 minutes to Dallas-Fort Worth International Airport
- 20 minutes to Downtown Fort Worth
- 30 minutes to Downtown Dallas



Other Nearby Amenities:



Other Nearby Amenities:



