

MEDICAL SUITE FOR SUBLEASE OR LEASE

# THE GREENWAY MEDICAL PROFESSIONAL BUILDING

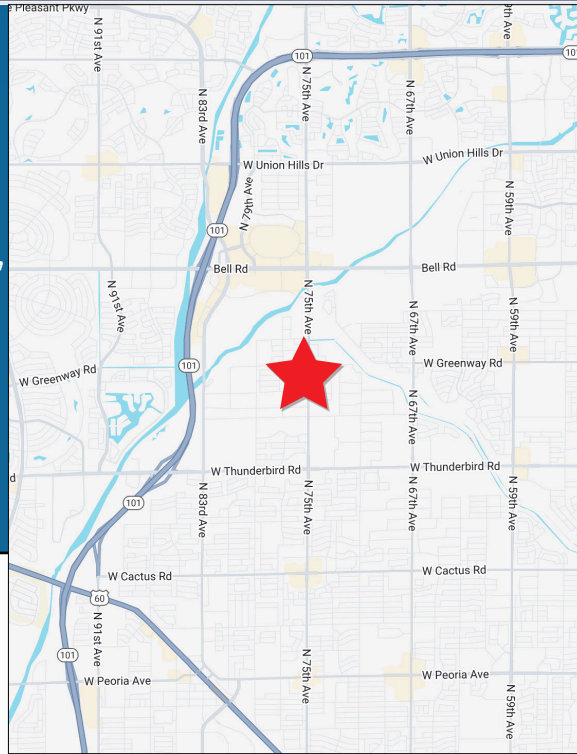


www.orionprop.com

15182 North 75th Avenue, Suite 160 | Peoria, Arizona 85381



- Sublease offered thru Dec 31st, 2026, Direct Lease Possible
- Fully Built Out Medical Space
- 6 Exams, 1 Offices, 1 Break Room, 1 RR, Storage, Lobby/Reception
- Building Signage Available Facing 75th Ave
- Located Near Loop 101 Freeway in Prosperous Peoria Submarket



**AVAILABILITY:** ± 1,689 SF

**LEASE RATE:** \$20 NNN

**PARKING:** 4.90/1,000

**CROSS STREETS:**

**75th Avenue:** 21,691 VPD  
**Greenway Road:** 3,526 VPD

**CONTACT FOR MORE INFORMATION:**

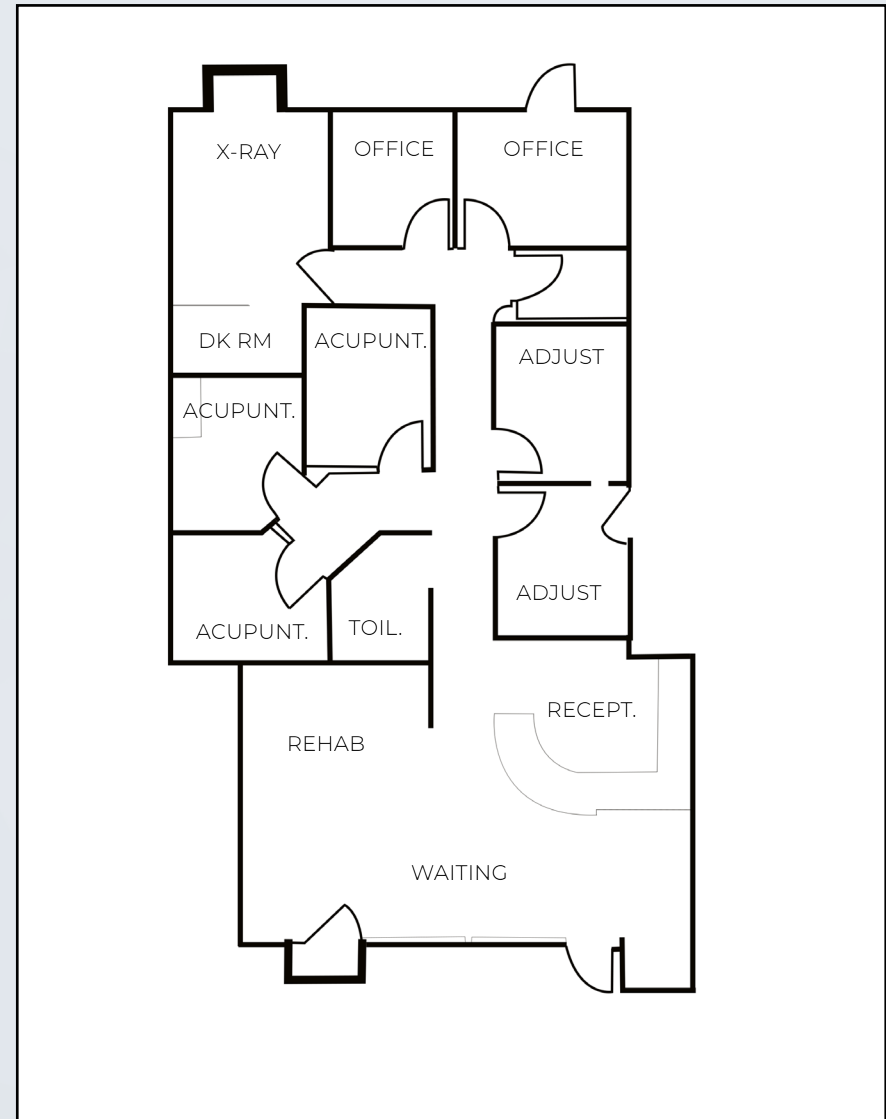
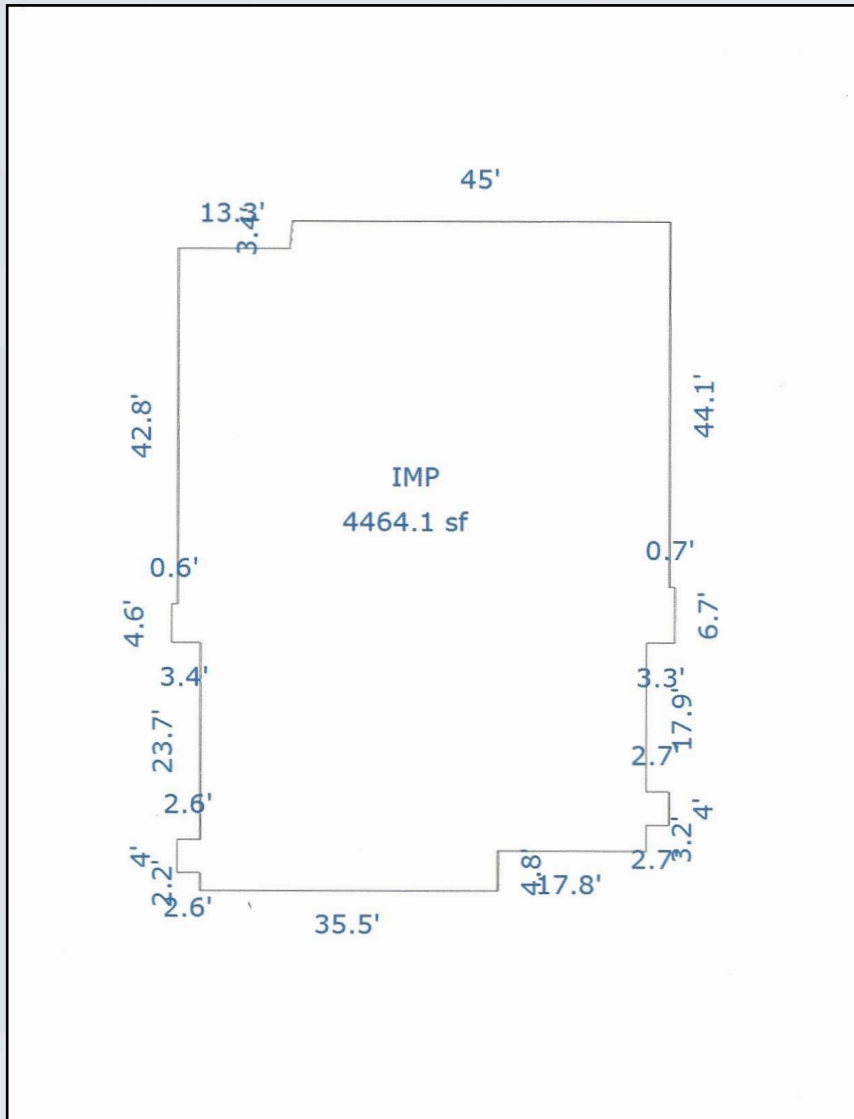
**J.T. TAYLOR**

Direct Phone: (480) 868-2671

jt.taylor@orionprop.com

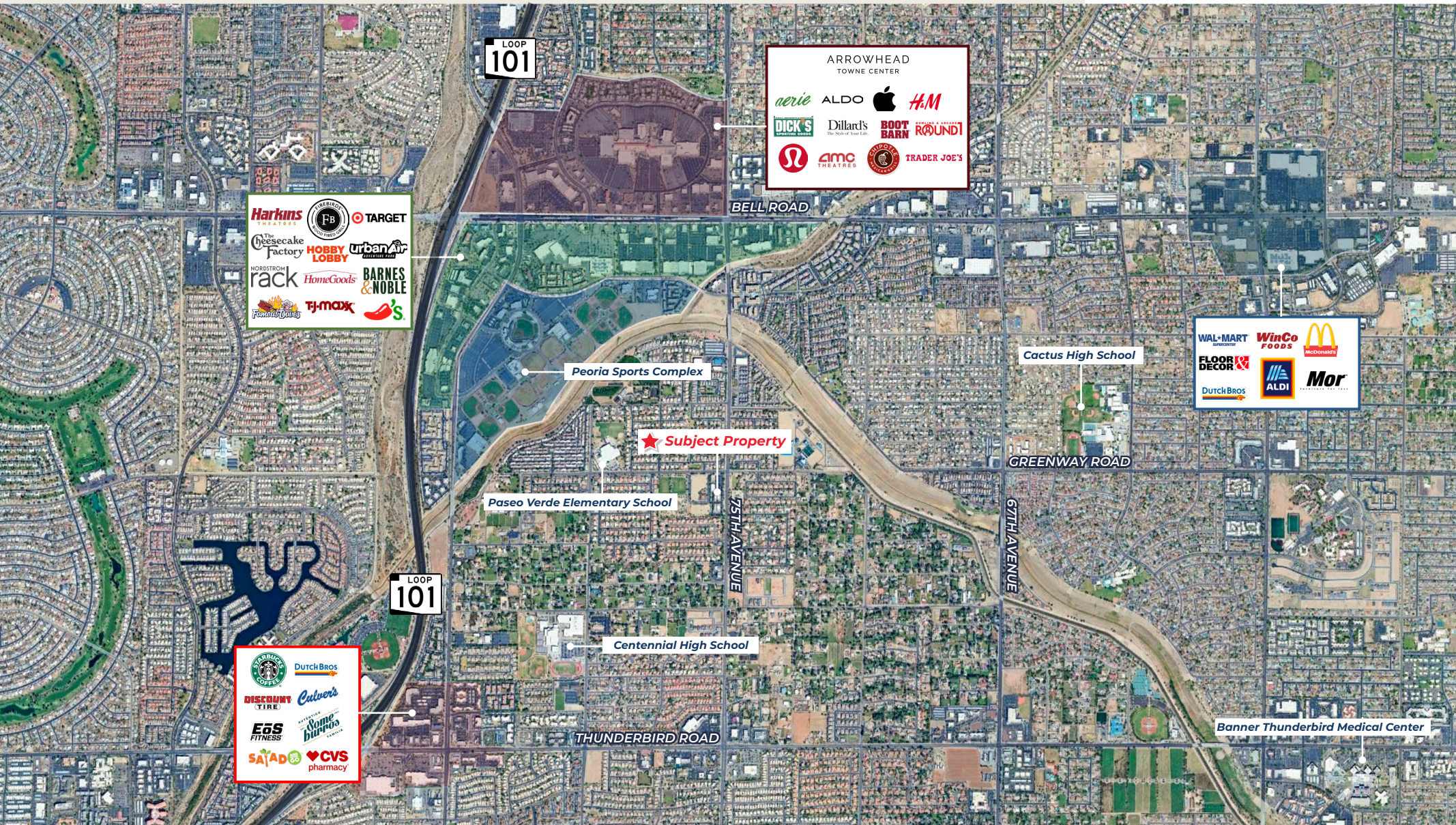
# FLOOR PLAN

The Greenway Medical Professional Building | **SUITE 160** | **± 1,689-square-feet**



# AERIAL MAP

15182 North 75th Avenue, Suite 160  
Peoria, Arizona 85381



# DEMOGRAPHICS



2024 SUMMARY (SitesUSA)	1 Mile	3 Mile	5 Mile
Residential Population:	10,303	120,535	333,733
2029 Proj. Residential Population:	11,392	121,063	333,772
Average Household Income:	\$119,755	\$109,988	\$104,059
Annual Consumer Health Care Expenditures:	\$27.72 M	\$326.29 M	\$933.33 M
Median Age:	39.9	41.7	42.9
Average Household Size:	1.9	2.2	2.1
Housing Units:	4,548	53,067	150,031
Estimated Households:	4,201	48,713	137,548
Total Employees:	2,663	42,071	86,664

