



**LOCATION.**  
commercial real estate

**SIGNAGE SIGNAGE SIGNAGE SIGNAGE**

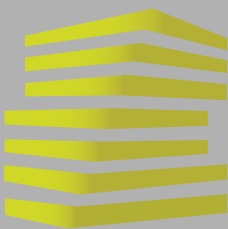
**AXES**  
PHYSIC THERAPY

**1155**  
**HAZEL LANE**

END CAP AVAILABLE

**FARMINGTON, MO**

**1,401 - 5,631 SF AVAILABLE**



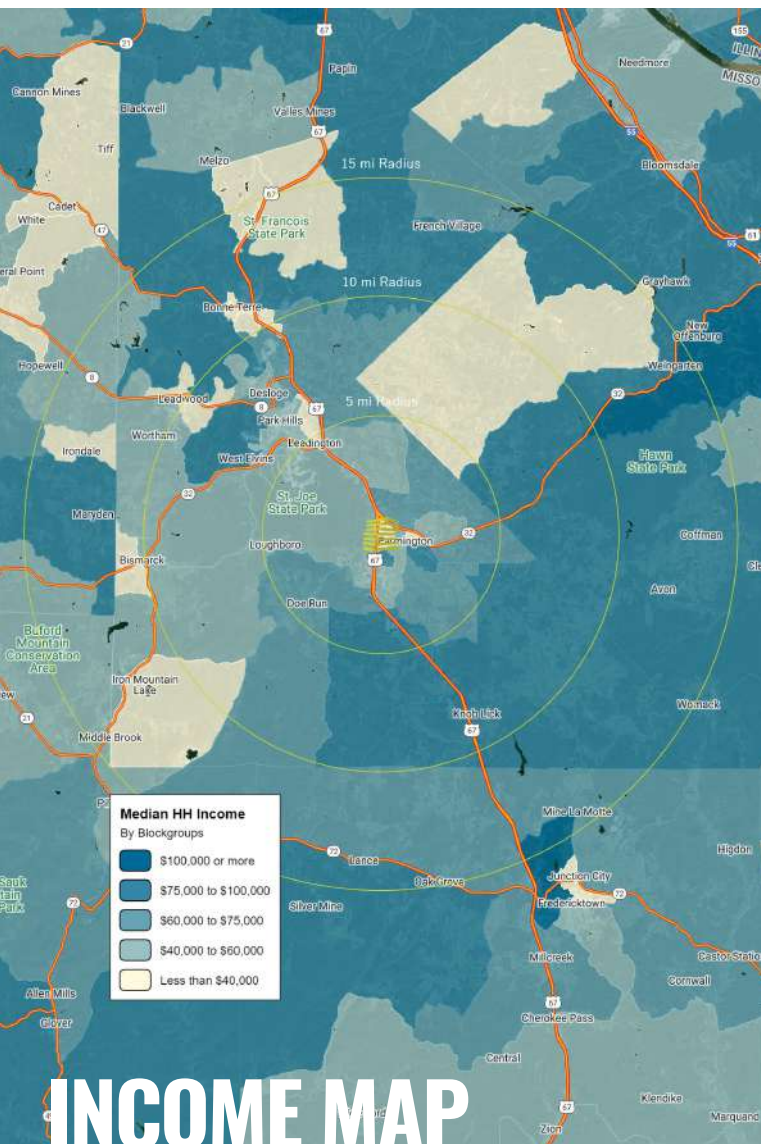
# 1155 HAZEL LANE

---

## NEIGHBORHOOD VIBE

BEN WEIS

314.818.1563 (OFFICE)  
314.629.6532 (MOBILE)  
Ben@LocationCRE.com



### TRADE AREA OVERVIEW

Farmington, Missouri is located just one hour south of St. Louis at the edge of the beautiful Ozark Mountains, and is surrounded by nine of Missouri's most scenic State Parks, challenging golf courses, an extreme off-road recreation area, hiking trails, and fifteen award winning vineyards and wineries. Farmington is home to S&R Products, U.S. Tool and Startek, a call center. Other major employers in the city are BJC Parkland Health Center, Centene Corp, USA Drug and Farmington Correctional Center.

Farmington offers a unique mix of dining venues that include some of the region's most acclaimed local cuisine from comfort food to exquisite upscale restaurants. Situated in turn-of-the-century historic buildings, a variety of quaint locally owned shops and restaurants line the downtown streets. Over 400 hotel guest rooms can be found conveniently close to shopping, dining and area attractions. Al's Place - TransAmerica Trail Inn is located in downtown Farmington and caters exclusively to bicyclists riding the TransAmerica Trail.

Local attractions for the kids include the Farmington Water Park featuring two exciting slides, a peaceful float down the lazy river and an interactive aquatic playground. The Farmington SK8 Park, the largest skate park in Southeast Missouri, is located in historic downtown Farmington and open daily with free admission. The Farmington Disc Golf course, located in Engler Park, features the region's newest 18-hole course and is open to the public with no fees to play.

### DEMOGRAPHICS

	5 mile	10 miles	15 miles
<b>POPULATION</b>	26,600	49,435	73,504
<b>HOUSEHOLDS</b>	9,668	18,979	27,663
<b>EMPLOYEES</b>	1,142	1,692	2,074
<b>MED HH INCOME</b>	\$77,813	\$75,893	\$75,522

### AREA RETAIL | RESTAURANTS

Walmart

LOWE'S

five BELOW

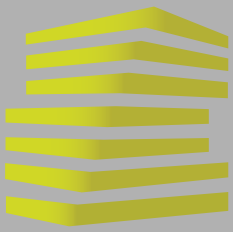
Club CARWASH

ALDI

Schnucks

MENARDS

HOBBY LOBBY



1155 HAZEL LANE

DETAILS

BEN WEIS

314.818.1563 (OFFICE)  
314.629.6532 (MOBILE)  
Ben@LocationCRE.com



- 1,401 - 5,631 SF AVAILABLE
- STRIP CENTER DEVELOPMENT ANCHORED BY AXES PHYSICAL THERAPY AVAILABLE FOR LEASE IN FARMINGTON, MO
- UNOBSTRUCTED VISIBILITY TO OVER 6,000 VPD ON MAPLE VALLEY DR
- LOCATED NEAR BJC PARKLAND HEALTH CENTER (130 BEDS) AND NEWLY ANNOUNCED \$21.3M EXPANSION PLANS ADDING 30,000 SF OFFICE BUILDING
- PLEASE CALL BROKER FOR PRICING AND ADDITIONAL DETAILS



**LOCATION.**  
commercial real estate



[www.LocationCRE.com](http://www.LocationCRE.com)

THE INFORMATION IN THIS FLYER HAS BEEN OBTAINED FROM SOURCES BELIEVED RELIABLE. WHILE WE DO NOT DOUBT ITS ACCURACY, WE HAVE NOT VERIFIED IT AND MAKE NO GUARANTEE ABOUT IT. IT IS YOUR RESPONSIBILITY TO INDEPENDENTLY CONFIRM ITS ACCURACY AND COMPLETENESS. ANY PROJECTIONS, OPINIONS, ASSUMPTIONS OR ESTIMATES USED ARE FOR EXAMPLE ONLY AND DO NOT REPRESENT THE CURRENT OR FUTURE PERFORMANCE OF THE PROPERTY. THE VALUE OF THIS TRANSACTION TO YOU DEPENDS ON TAX AND OTHER FACTORS WHICH SHOULD BE EVALUATED BY YOUR TAX, FINANCIAL AND LEGAL ADVISORS. YOU AND YOUR ADVISORS SHOULD CONDUCT A CAREFUL, INDEPENDENT INVESTIGATION OF THE PROPERTY TO DETERMINE TO YOUR SATISFACTION THE SUITABILITY OF THE PROPERTY FOR YOUR NEEDS.



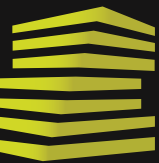
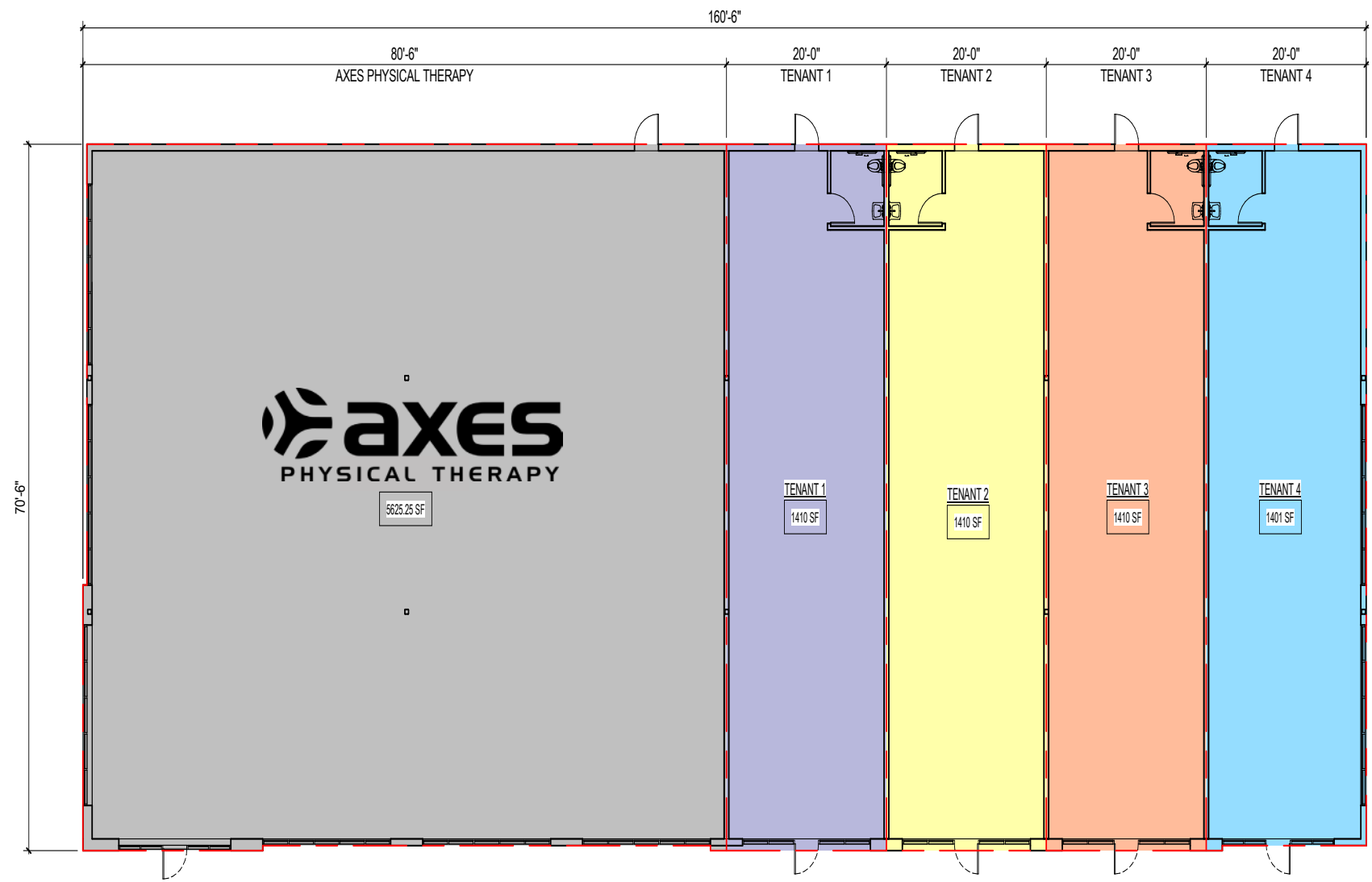
# 1155 HAZEL LANE

---

## MARKETING PLAN

BEN WEIS

314.818.1563 (OFFICE)  
 314.629.6532 (MOBILE)  
 Ben@LocationCRE.com

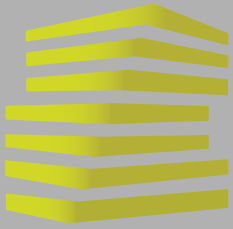


**LOCATION.**  
commercial real estate



[www.LocationCRE.com](http://www.LocationCRE.com)

THE INFORMATION IN THIS FLYER HAS BEEN OBTAINED FROM SOURCES BELIEVED RELIABLE. WHILE WE DO NOT DOUBT ITS ACCURACY, WE HAVE NOT VERIFIED IT AND MAKE NO GUARANTEE ABOUT IT. IT IS YOUR RESPONSIBILITY TO INDEPENDENTLY CONFIRM ITS ACCURACY AND COMPLETENESS. ANY PROJECTIONS, OPINIONS, ASSUMPTIONS OR ESTIMATES USED ARE FOR EXAMPLE ONLY AND DO NOT REPRESENT THE CURRENT OR FUTURE PERFORMANCE OF THE PROPERTY. THE VALUE OF THIS TRANSACTION TO YOU DEPENDS ON TAX AND OTHER FACTORS WHICH SHOULD BE EVALUATED BY YOUR TAX, FINANCIAL AND LEGAL ADVISORS. YOU AND YOUR ADVISORS SHOULD CONDUCT A CAREFUL, INDEPENDENT INVESTIGATION OF THE PROPERTY TO DETERMINE TO YOUR SATISFACTION THE SUITABILITY OF THE PROPERTY FOR YOUR NEEDS.

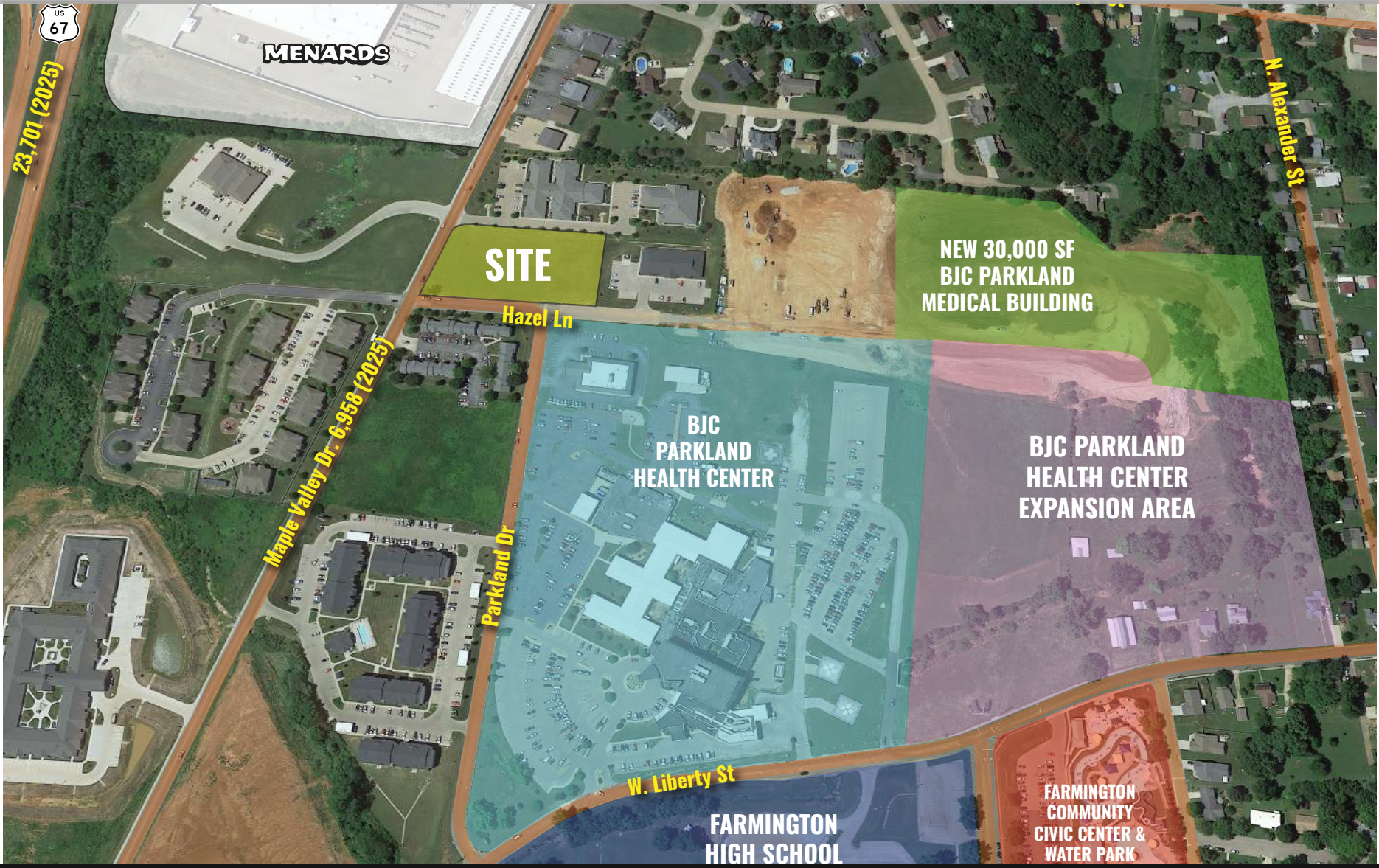


# 1155 HAZEL LANE

## ZOOM AERIAL

BEN WEIS

314.818.1563 (OFFICE)  
314.629.6532 (MOBILE)  
Ben@LocationCRE.com



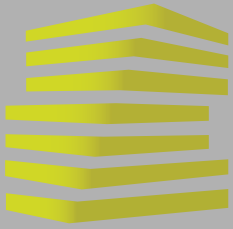
# LOCATION.

commercial real estate



[www.LocationCRE.com](http://www.LocationCRE.com)

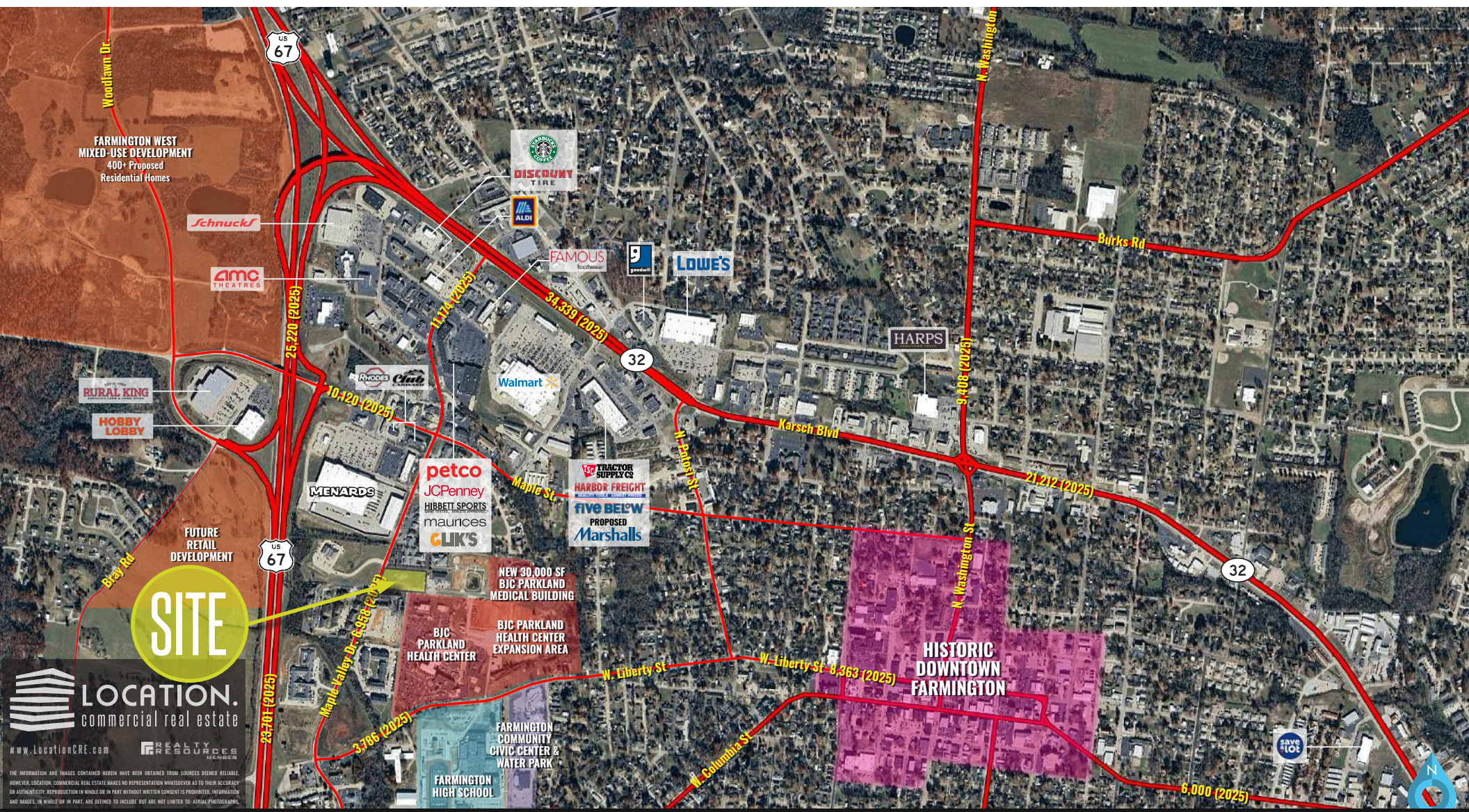
THE INFORMATION IN THIS FLYER HAS BEEN OBTAINED FROM SOURCES BELIEVED RELIABLE. WHILE WE DO NOT DOUBT ITS ACCURACY, WE HAVE NOT VERIFIED IT AND MAKE NO GUARANTEE ABOUT IT. IT IS YOUR RESPONSIBILITY TO INDEPENDENTLY CONFIRM ITS ACCURACY AND COMPLETENESS. ANY PROJECTIONS, OPINIONS, ASSUMPTIONS OR ESTIMATES USED ARE FOR EXAMPLE ONLY AND DO NOT REPRESENT THE CURRENT OR FUTURE PERFORMANCE OF THE PROPERTY. THE VALUE OF THIS TRANSACTION TO YOU DEPENDS ON TAX AND OTHER FACTORS WHICH SHOULD BE EVALUATED BY YOUR TAX, FINANCIAL AND LEGAL ADVISORS. YOU AND YOUR ADVISORS SHOULD CONDUCT A CAREFUL, INDEPENDENT INVESTIGATION OF THE PROPERTY TO DETERMINE TO YOUR SATISFACTION THE SUITABILITY OF THE PROPERTY FOR YOUR NEEDS.



# 1155 HAZEL LANE MARKET AERIAL

BEN WEIS

314.818.1563 (OFFICE)  
314.629.6532 (MOBILE)  
Ben@LocationCRE.com



**LOCATION.**  
commercial real estate  
www.LocationCRE.com

THE INFORMATION AND IMAGES CONTAINED HEREIN HAVE BEEN OBTAINED FROM SOURCES DEEMED RELIABLE. HOWEVER, LOCATION, COMMERCIAL REAL ESTATE MAKES NO REPRESENTATION WHATSOEVER AS TO THEIR ACCURACY OR AUTHENTICITY. REPRODUCTION IN WHOLE OR IN PART WITHOUT WRITTEN CONSENT IS PROHIBITED. INFORMATION AND IMAGES, IN WHOLE OR IN PART, ARE OBTAINED TO INCLUDE BUT ARE NOT LIMITED TO AERIAL PHOTOGRAPHS.

**LOCATION.**  
commercial real estate

f @ in REALTY RESOURCES MEMBER

www.LocationCRE.com

THE INFORMATION IN THIS FLYER HAS BEEN OBTAINED FROM SOURCES BELIEVED RELIABLE. WHILE WE DO NOT DOUBT ITS ACCURACY, WE HAVE NOT VERIFIED IT AND MAKE NO GUARANTEE ABOUT IT. IT IS YOUR RESPONSIBILITY TO INDEPENDENTLY CONFIRM ITS ACCURACY AND COMPLETENESS. ANY PROJECTIONS, OPINIONS, ASSUMPTIONS OR ESTIMATES USED ARE FOR EXAMPLE ONLY AND DO NOT REPRESENT THE CURRENT OR FUTURE PERFORMANCE OF THE PROPERTY. THE VALUE OF THIS TRANSACTION TO YOU DEPENDS ON TAX AND OTHER FACTORS WHICH SHOULD BE EVALUATED BY YOUR TAX, FINANCIAL AND LEGAL ADVISORS. YOU AND YOUR ADVISORS SHOULD CONDUCT A CAREFUL, INDEPENDENT INVESTIGATION OF THE PROPERTY TO DETERMINE TO YOUR SATISFACTION THE SUITABILITY OF THE PROPERTY FOR YOUR NEEDS.