

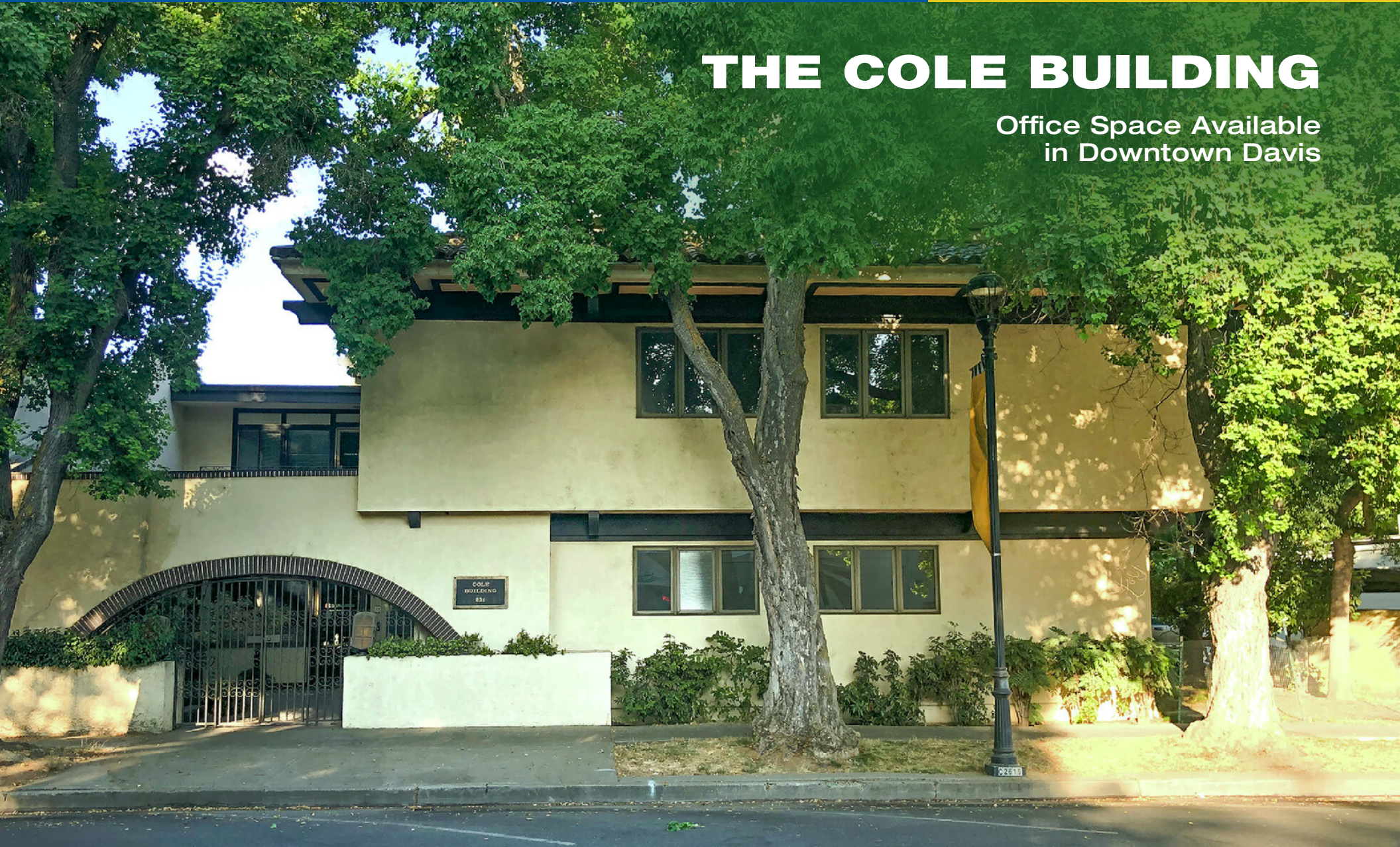
231 D Street

Davis, CA

FOR LEASE

THE COLE BUILDING

Office Space Available
in Downtown Davis



916-443-1500

916-443-1556 FAX

CA DRE LIC #C01929348

2747 Riverside Blvd.

Sacramento, CA 95818

EXCLUSIVE AGENT: **DAVID MACKO**

916-443-1500

916-443-1556 FAX

dmacko@norcalcommercial.net

CA DRE LIC #01413910

The above information while not guaranteed has been secured from sources we believe to be reliable. However, we have not verified its accuracy and make no guarantee, warranty, or representation about it. It is submitted subject to the possibility of errors, omissions, change of price or rental rate, or other conditions, prior lease, sale, financing, or withdrawal without notice. We include projections, opinions, assumptions or estimates for example only, and they may not represent current or future performance of the property. You and your tax, legal, and other professional advisors should conduct your own independent investigation of all aspects of the property and transaction.

THE PROPERTY

SPACE AVAILABLE : Suite A – 2,575 sf

RATE : \$2.00 psf MG

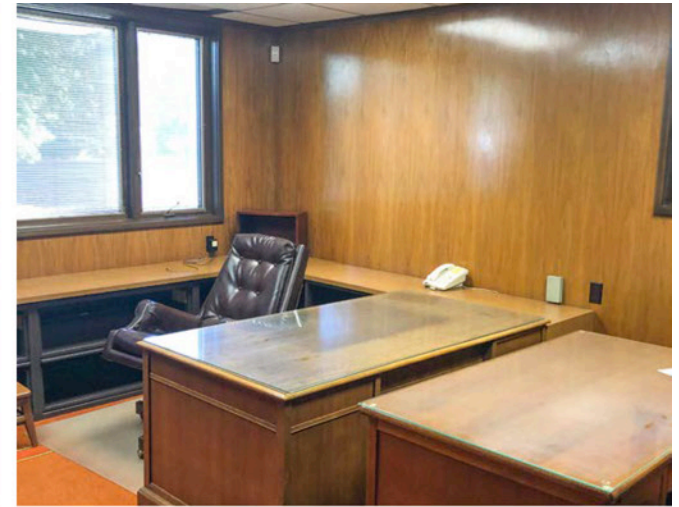
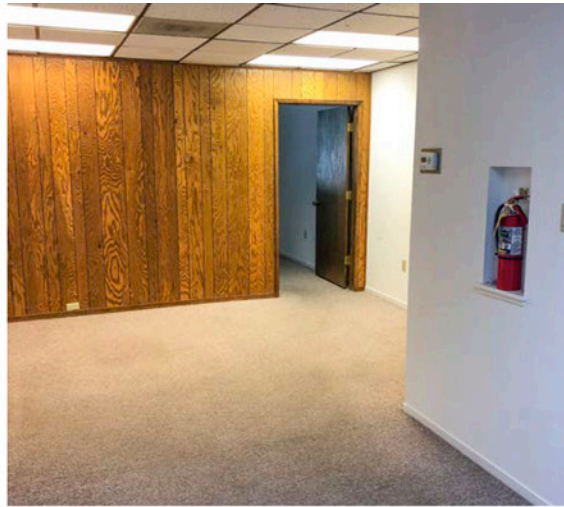
- Great Downtown Professional Office Suite.
- Close to many restaurants and amenities in the heart of Downtown & close to UCD. Walking distance to USPS, Cloud Forest Cafe, Cafe Bernardo, Burgers & Brew, Pete's Coffee, River City Bank, Chipotle, and Raising Cane's.
- On Site Parking.



916-443-1500 2747 Riverside Blvd.
916-443-1556 FAX Sacramento, CA 95818
CA DRE LIC #C01929348

The above information while not guaranteed has been secured from sources we believe to be reliable. However, we have not verified its accuracy and make no guarantee, warranty, or representation about it. It is submitted subject to the possibility of errors, omissions, change of price or rental rate, or other conditions, prior lease, sale, financing, or withdrawal without notice. We include projections, opinions, assumptions or estimates for example only, and they may not represent current or future performance of the property. You and your tax, legal, and other professional advisors should conduct your own independent investigation of all aspects of the property and transaction.

PROPERTY PHOTOS

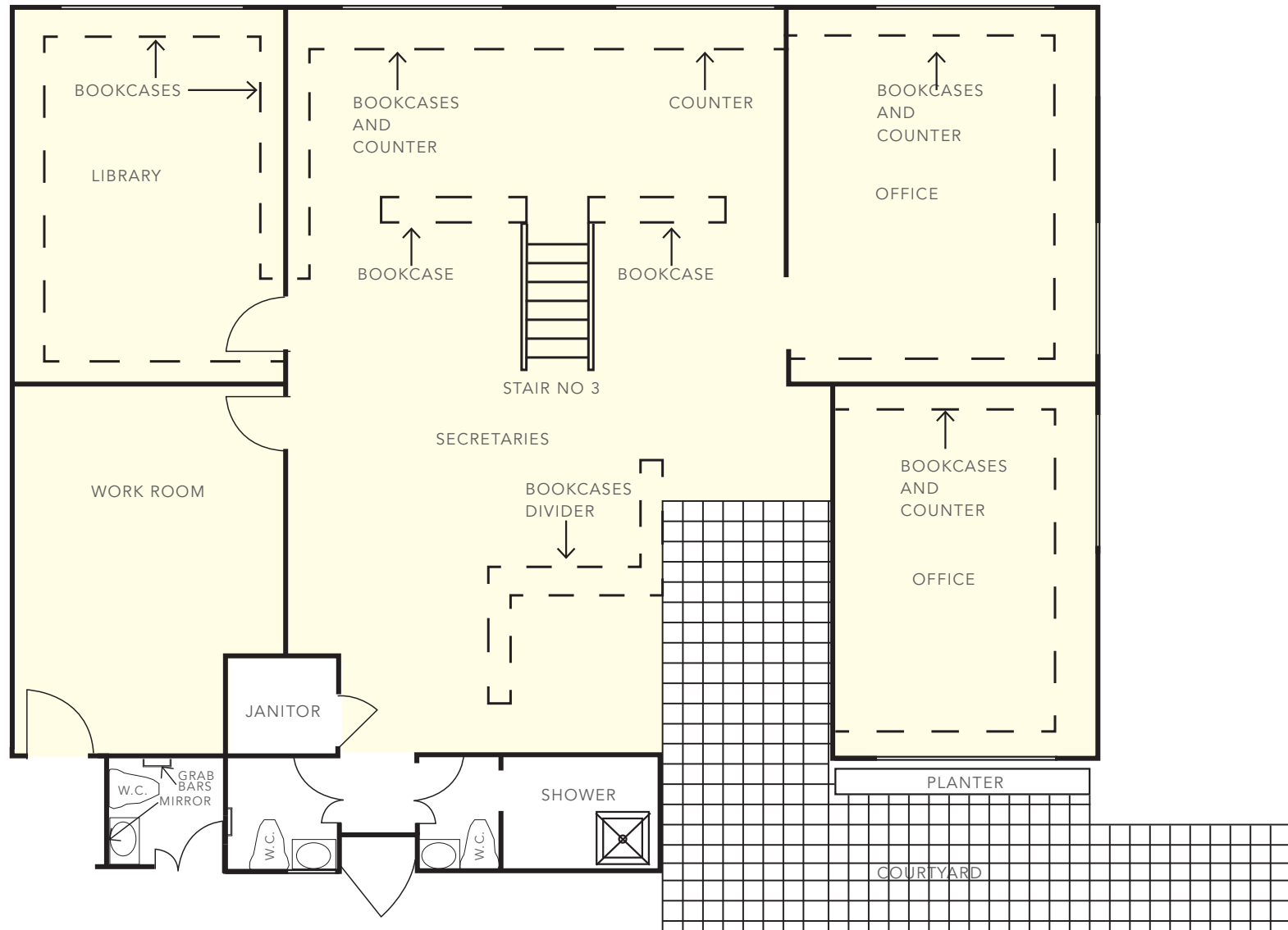


916-443-1500 2747 Riverside Blvd.
 916-443-1556 FAX Sacramento, CA 95818
 CA DRE LIC #C01929348

The above information while not guaranteed has been secured from sources we believe to be reliable. However, we have not verified its accuracy and make no guarantee, warranty, or representation about it. It is submitted subject to the possibility of errors, omissions, change of price or rental rate, or other conditions, prior lease, sale, financing, or withdrawal without notice. We include projections, opinions, assumptions or estimates for example only, and they may not represent current or future performance of the property. You and your tax, legal, and other professional advisors should conduct your own independent investigation of all aspects of the property and transaction.

FLOOR PLANS

SUITE A DOWNSTAIRS

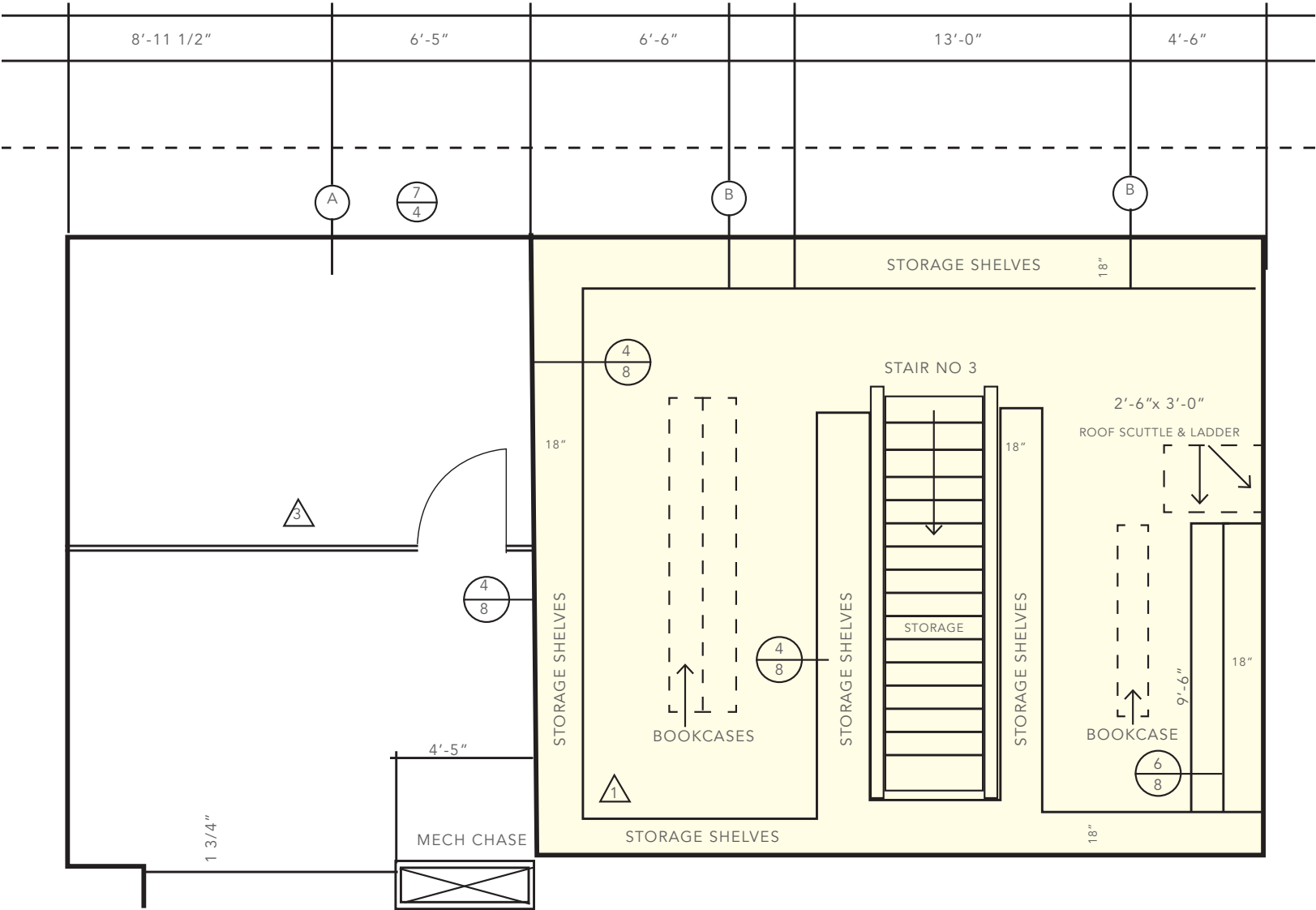


916-443-1500 2747 Riverside Blvd.
 916-443-1556 FAX Sacramento, CA 95818
 CA DRE LIC #C01929348

The above information while not guaranteed has been secured from sources we believe to be reliable. However, we have not verified its accuracy and make no guarantee, warranty, or representation about it. It is submitted subject to the possibility of errors, omissions, change of price or rental rate, or other conditions, prior lease, sale, financing, or withdrawal without notice. We include projections, opinions, assumptions or estimates for example only, and they may not represent current or future performance of the property. You and your tax, legal, and other professional advisors should conduct your own independent investigation of all aspects of the property and transaction.

FLOOR PLANS

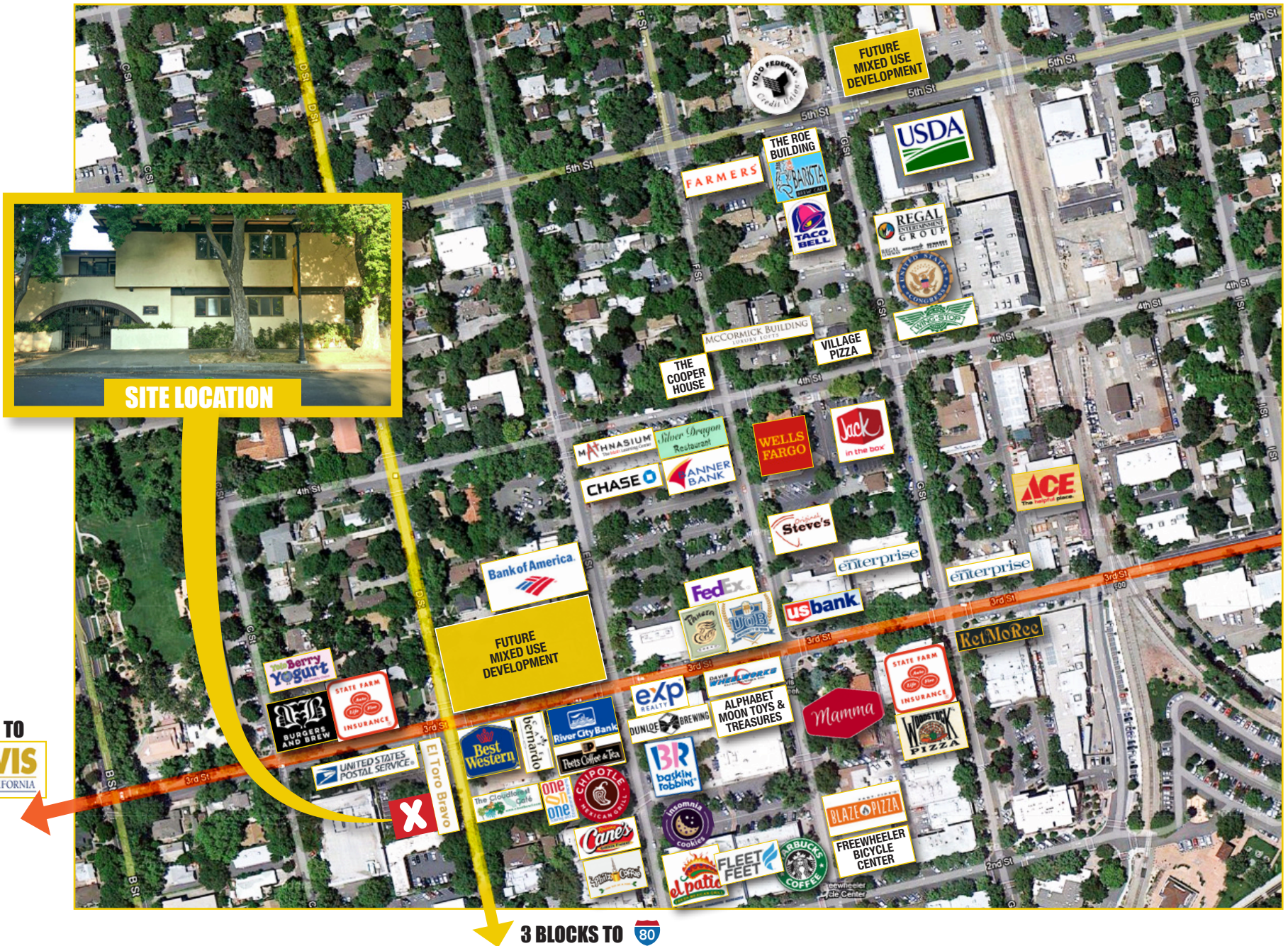
SUITE A UPSTAIRS



916-443-1500 2747 Riverside Blvd.
916-443-1556 FAX Sacramento, CA 95818
CA DRE LIC #C01929348

The above information while not guaranteed has been secured from sources we believe to be reliable. However, we have not verified its accuracy and make no guarantee, warranty, or representation about it. It is submitted subject to the possibility of errors, omissions, change of price or rental rate, or other conditions, prior lease, sale, financing, or withdrawal without notice. We include projections, opinions, assumptions or estimates for example only, and they may not represent current or future performance of the property. You and your tax, legal, and other professional advisors should conduct your own independent investigation of all aspects of the property and transaction.

SITE AERIAL VIEW



916-443-1500 2747 Riverside Blvd.
 916-443-1556 FAX Sacramento, CA 95818
 CA DRE LIC #C01929348

The above information while not guaranteed has been secured from sources we believe to be reliable. However, we have not verified its accuracy and make no guarantee, warranty, or representation about it. It is submitted subject to the possibility of errors, omissions, change of price or rental rate, or other conditions, prior lease, sale, financing, or withdrawal without notice. We include projections, opinions, assumptions or estimates for example only, and they may not represent current or future performance of the property. You and your tax, legal, and other professional advisors should conduct your own independent investigation of all aspects of the property and transaction.

DAVIS AREA OVERVIEW

Aerial View Map



916-443-1500 2747 Riverside Blvd.
 916-443-1556 FAX Sacramento, CA 95818
 CA DRE LIC #C01929348

The above information while not guaranteed has been secured from sources we believe to be reliable. However, we have not verified its accuracy and make no guarantee, warranty, or representation about it. It is submitted subject to the possibility of errors, omissions, change of price or rental rate, or other conditions, prior lease, sale, financing, or withdrawal without notice. We include projections, opinions, assumptions or estimates for example only, and they may not represent current or future performance of the property. You and your tax, legal, and other professional advisors should conduct your own independent investigation of all aspects of the property and transaction.