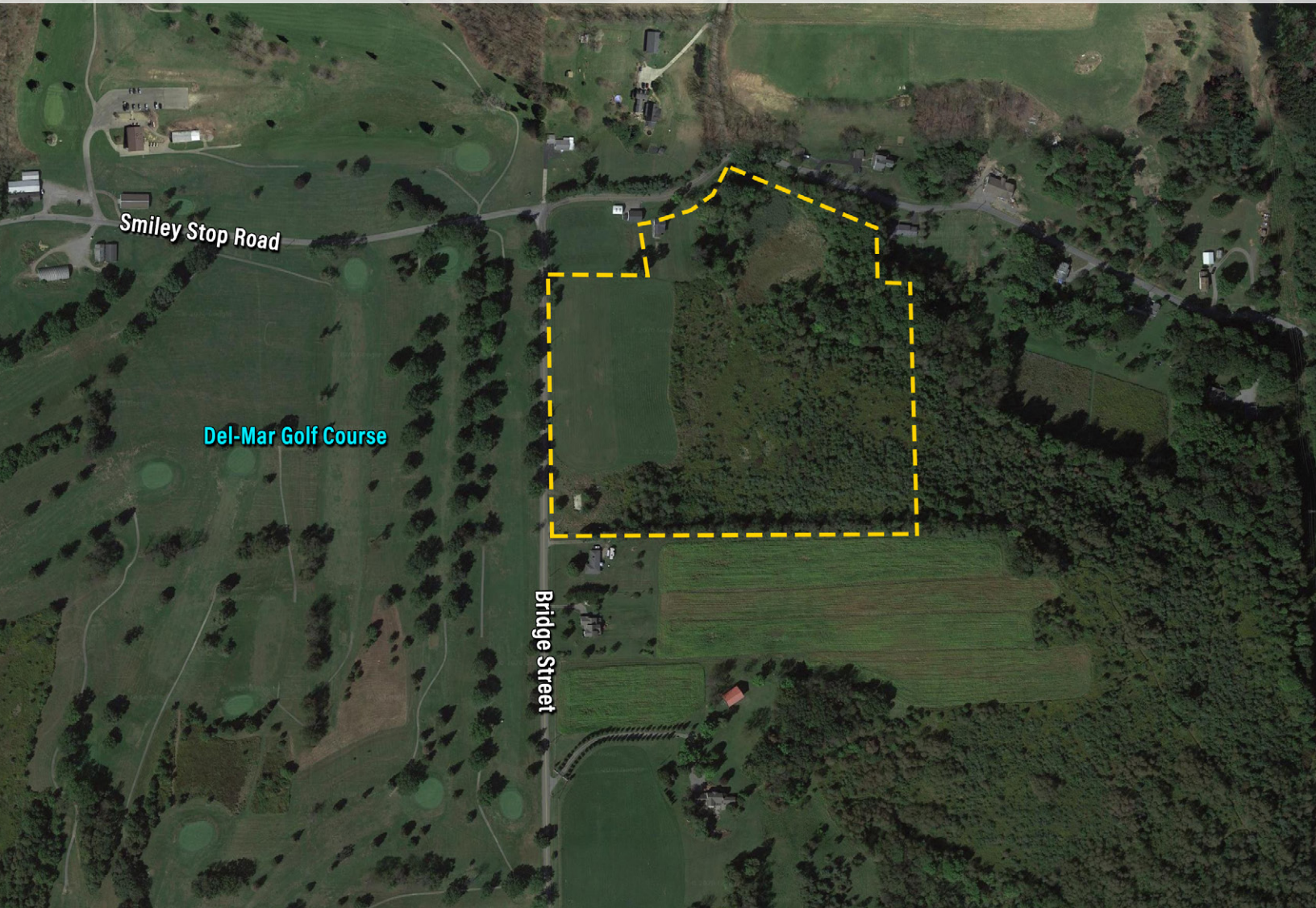


2542 BRIDGE STREET

Ellwood City, PA 16117 | Lawrence County

22.5 ACRES FOR SALE
RESIDENTIAL DEVELOPMENT



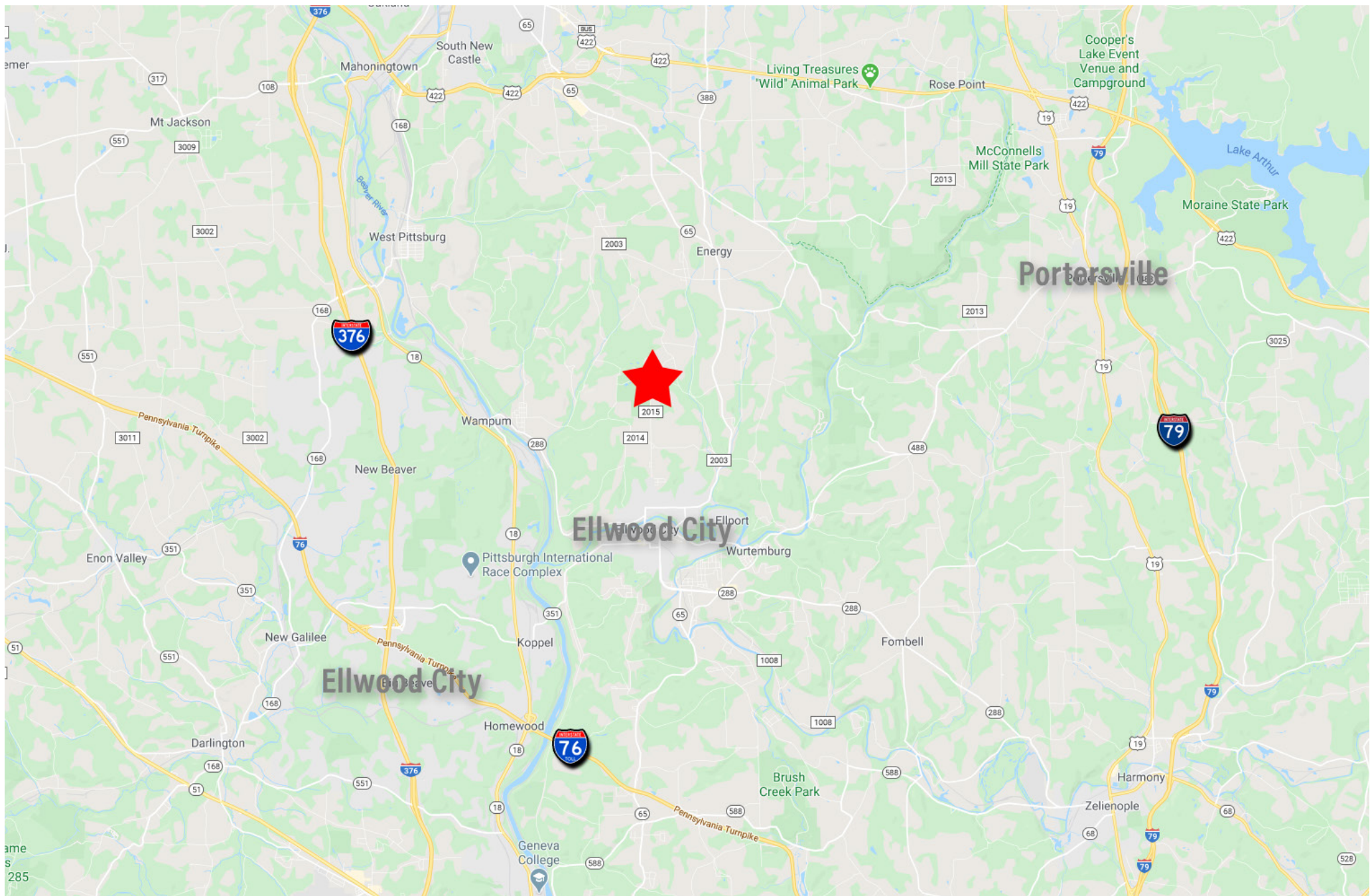
PROPERTY ADDRESS	2542 Bridge Street Ellwood City, PA 16117 Wayne Township Lawrence County
LOT SIZE	22.5 acres
SCHOOL DISTRICT	Ellwood City School District
DISTANCE TO	5 miles to PA Turnpike and I-376
NOTES	<ul style="list-style-type: none">Beautiful settingLocated directly adjacent to the Del-Mar Golf Course
SALE PRICE	\$170,000

CONTACT

Tom Conroy
tconroy@HannaLWE.com
412.261.2200



All information furnished regarding property for sale, rental or financing is from sources deemed reliable. No representation is made as to the accuracy thereof, and it is submitted subject to errors, omissions, change of price, rental, or other conditions, prior sale lease, financing or withdrawal without notice. Hanna Langholz Wilson Ellis will make no representation, and assume no obligation, regarding the presence or absence of toxic or hazardous waste or substances or other undesirable material on or about the property.



CONTACT

Tom Conroy

tconroy@HannaLWE.com

One PPG Place • Suite 1640 • Pittsburgh, PA 15222
412.261.2200 • HannaLWE.com

All information furnished regarding property for sale, rental or financing is from sources deemed reliable. No representation is made as to the accuracy thereof, and it is submitted subject to errors, omissions, change of price, rental, or other conditions, prior sale lease, financing or withdrawal without notice. Hanna Langholz Wilson Ellis will make no representation, and assume no obligation, regarding the presence or absence of toxic or hazardous waste or substances or other undesirable material on or about the property.