

# 8630 Elder Creek Road

POWER INN SUBMARKET  
SACRAMENTO, CA

±4,900 SF Industrial Building



## Contact Us

**Zac Sweet** SIOR  
Senior Vice President  
+1 916 717 4768  
zac.sweet@cbre.com  
Lic. 01352800

**Tyler Howell**  
Senior Associate  
+1 916 781 4835  
tyler.howell1@cbre.com  
Lic. 02100245

**Courtney Lee**  
Associate  
+1 916 906 5544  
courtney.lee@cbre.com  
Lic. 02031694

**Nick Whittemore**  
Asset Manager  
+1 916 379 3872  
nicholaswhittemore@buzzoates.com  
Lic. 02031694

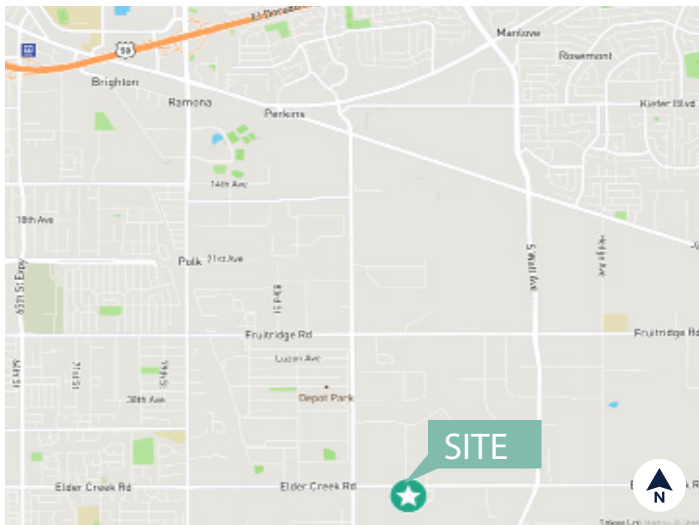
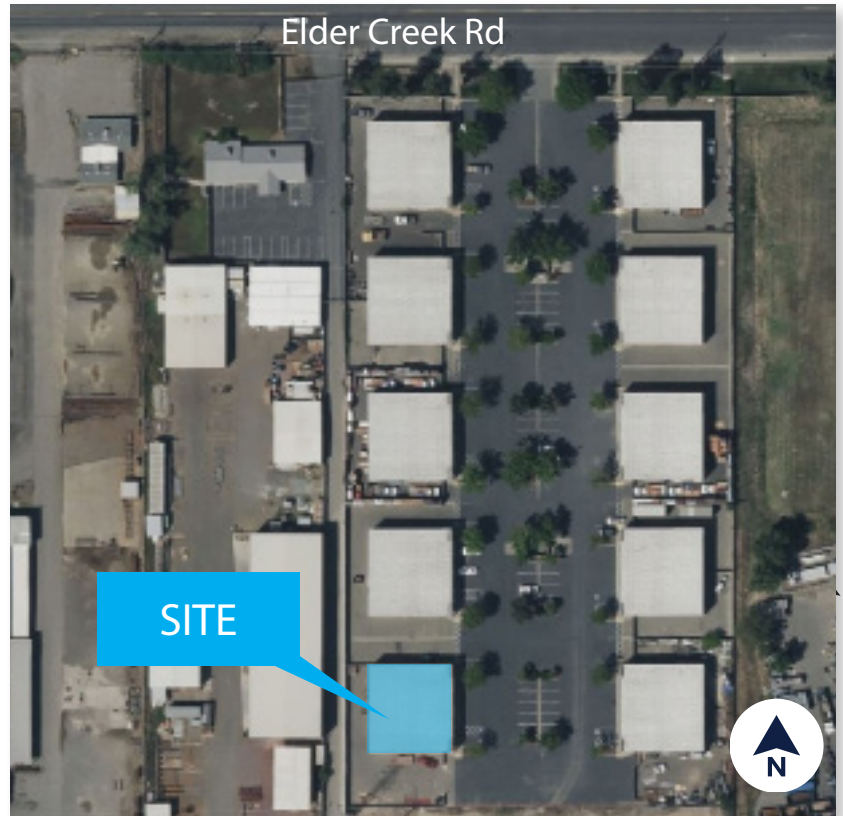


# PROPERTY INFORMATION

8630 ELDER CREEK ROAD  
SACRAMENTO, CA 95828

- + AVAILABLE:  $\pm 4,900$  SF
- + OFFICE AREA:  $\pm 467$  SF
- + CLEAR HEIGHT: 18'
- + GRADE LEVEL DOORS: 6 - 10' X 12'
- + ZONING: M-2 S HEAVY INDUSTRIAL
- + POWER: 400 AMPS, 120/208V\*

\*Tenant to independently verify prior to entering binding agreement



## Contact Us

**Zac Sweet SIOR**  
Senior Vice President  
+1 916 717 4768  
zac.sweet@cbre.com  
Lic. 01352800

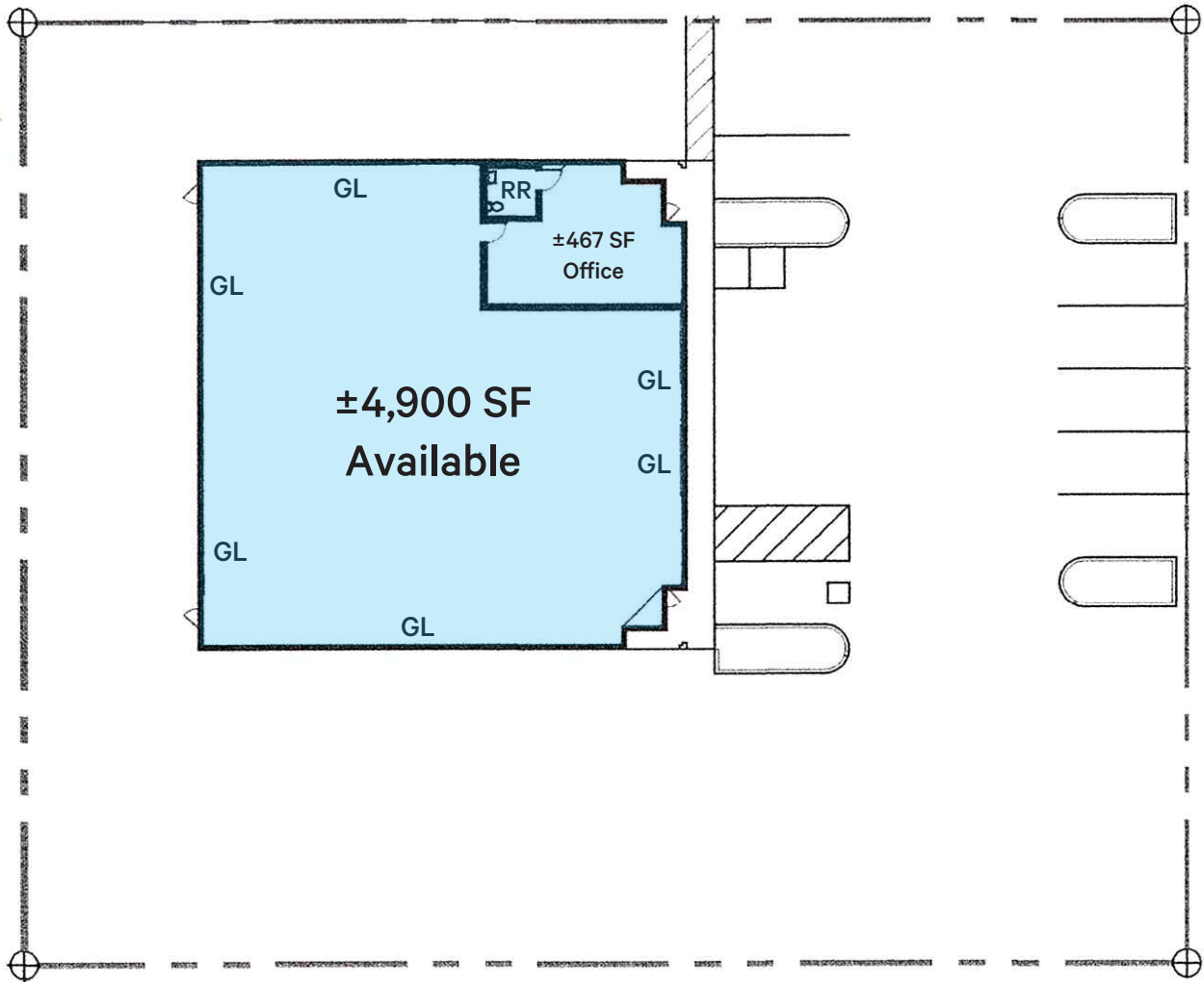
**Tyler Howell**  
Senior Associate  
+1 916 781 4835  
tyler.howell1@cbre.com  
Lic. 02100245

**Courtney Lee**  
Associate  
+1 916 906 5544  
courtney.lee@cbre.com  
Lic. 02031694

**Nick Whittemore**  
Asset Manager  
+1 916 379 3872  
nicholaswhittemore@buzzoates.com  
Lic. 02031694



# FLOOR PLAN



## Contact Us

**Zac Sweet SIOR**  
Senior Vice President  
+1 916 717 4768  
zac.sweet@cbre.com  
Lic. 01352800

**Tyler Howell**  
Senior Associate  
+1 916 781 4835  
tyler.howell1@cbre.com  
Lic. 02100245

**Courtney Lee**  
Associate  
+1 916 906 5544  
courtney.lee@cbre.com  
Lic. 02031694

**Nick Whittemore**  
Asset Manager  
+1 916 379 3872  
nicholaswhittemore@buzzoates.com  
Lic. 02031694



[www.cbre.com/sacramentodt](http://www.cbre.com/sacramentodt)

© 2023 CBRE, Inc. All rights reserved. This information has been obtained from sources believed reliable but has not been verified for accuracy or completeness. CBRE, Inc. makes no guarantee, representation or warranty and accepts no responsibility or liability as to the accuracy, completeness, or reliability of the information contained herein. You should conduct a careful, independent investigation of the property and verify all information. Any reliance on this information is solely at your own risk. CBRE and the CBRE logo are service marks of CBRE, Inc. All other marks displayed on this document are the property of their respective owners, and the use of such marks does not imply any affiliation with or endorsement of CBRE. Photos herein are the property of their respective owners. Use of these images without the express written consent of the owner is prohibited.