

# KENWOOD CROSSING

Fayetteville, GA

Location: GA Highway 85 and Old Road  
Adjoining QuikTrip at S.R. 85 & S.R. 279

Site Access: RIRO off GA Hwy 85 shared with QT  
Interparcel Access with QT to SR 279 and  
signalized intersection  
Full Serve curb cut onto Old Road

Aerial



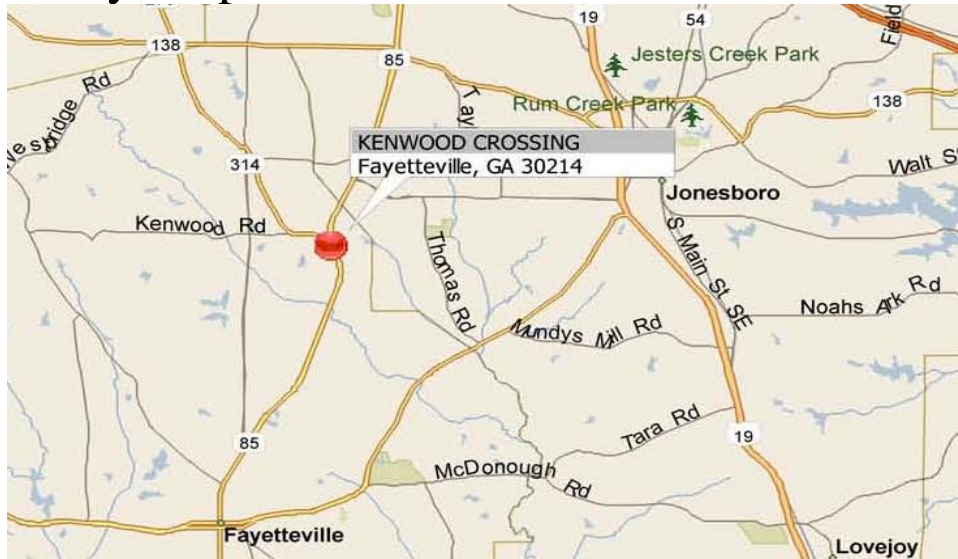
Traffic: 35,000

| Demographics: | Population | HH's   | Avg Inc |
|---------------|------------|--------|---------|
| 3 mile:       | 46,643     | 15,761 | 72,000  |
| 5 mile:       | 126,585    | 43,660 | 71,000  |

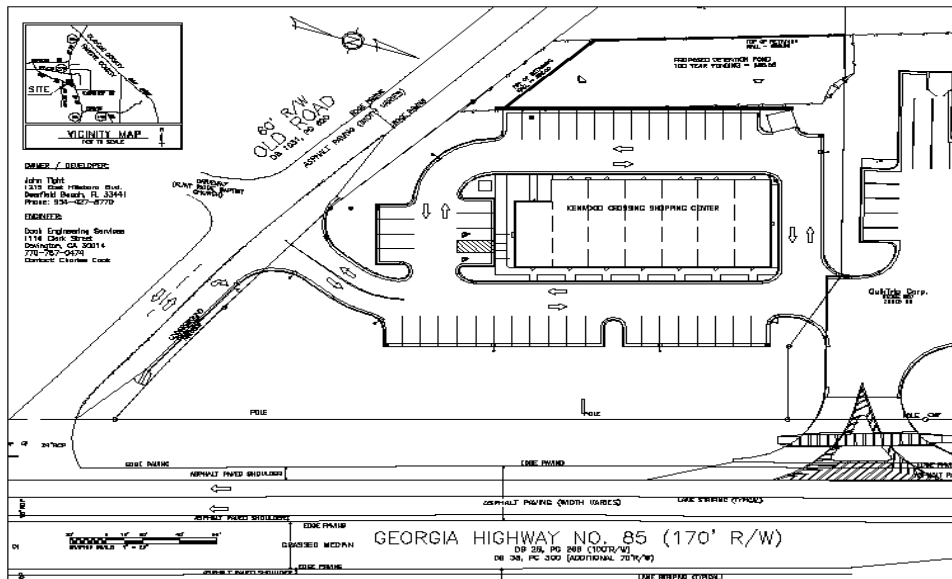


CONTACT: Thomas Wells 404.358.1176 [twells@foundationdevgroup.com](mailto:twells@foundationdevgroup.com)

# Vicinity Map



# Conceptual Site Plan



# Proposed Elevation – Small Shop Retail



|  |  |  |
|--|--|--|
|  | <h1>FOUNDATION</h1> <p>DEVELOPMENT GROUP, INC.</p> | <p>CONTACT:<br/>         Thomas Wells<br/>         404.358.1176<br/>         twells@foundationdevgroup.com</p> |
|--|--|--|