



2.0+/- ACRES
1425 MUNICIPAL
PARKWAY
DOUGLASVILLE, GA
30134

Land For Sale

RANDALL BRYAN, SIOR

Vice President
404.942.2015
rbryan@kingindustrial.com

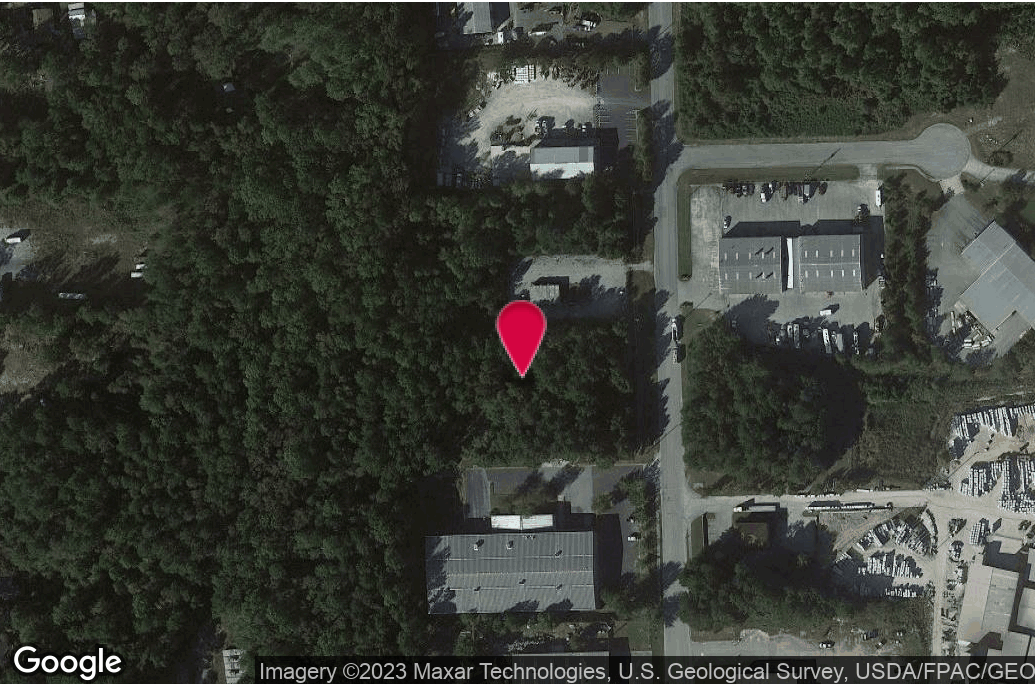
WILSON COVINGTON, SIOR

Senior Vice President
404.942.2073
wcovington@kingindustrial.com

King *Industrial
Realty, Inc.*

Industrial • Commercial • Investment
404.942.2000 | kingindustrial.com

EXECUTIVE SUMMARY



PROPERTY HIGHLIGHTS

- Vacant Industrial Tract
- H-I Zoning (Heavy Industrial)
- City of Douglasville
- Flat & Level Topography
- All Utilities Available

PROPERTY SUMMARY

Lot Size:

2 Acres

RANDALL BRYAN, SIOR

Vice President

404.942.2015

rbryan@kingindustrial.com

WILSON COVINGTON, SIOR

Senior Vice President

404.942.2073

wcovington@kingindustrial.com

Every effort has been made to provide accurate information, but no liability is assumed for errors or omissions.

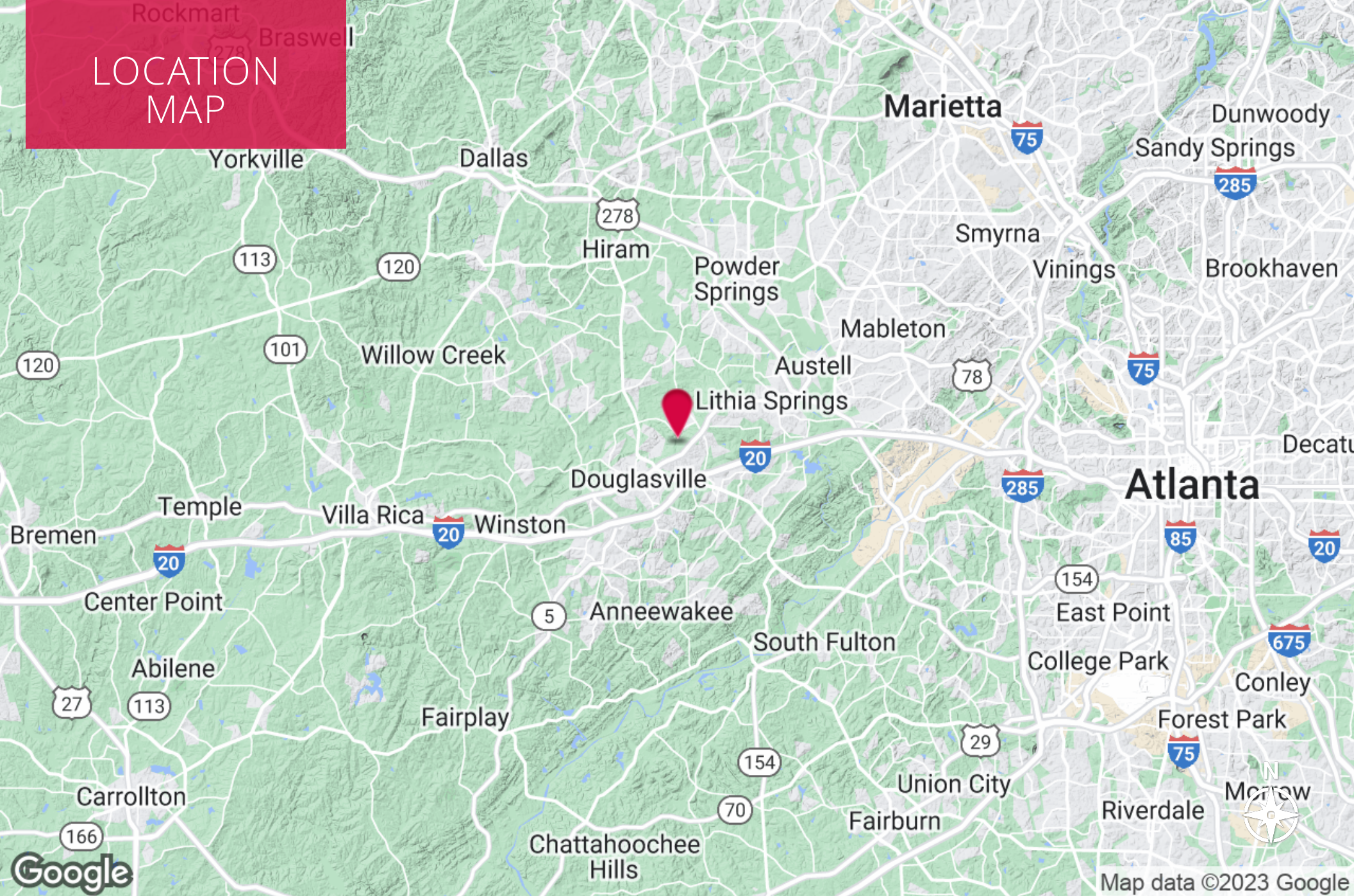
King Industrial Realty, Inc. **CORFAC** INTERNATIONAL

Industrial • Commercial • Investment
404.942.2000 | kingindustrial.com

ADDITIONAL PHOTOS



LOCATION MAP



RANDALL BRYAN, SIOR

Vice President

404.942.2015

rbryan@kingindustrial.com

WILSON COVINGTON, SIOR

Senior Vice President

404.942.2073

wcovington@kingindustrial.com

Every effort has been made to provide accurate information, but no liability is assumed for errors or omissions.



Industrial • Commercial • Investment
404.942.2000 | kingindustrial.com