



## 3032 Mitchellville Road, Suite 102

Bowie, Prince George's County, MD

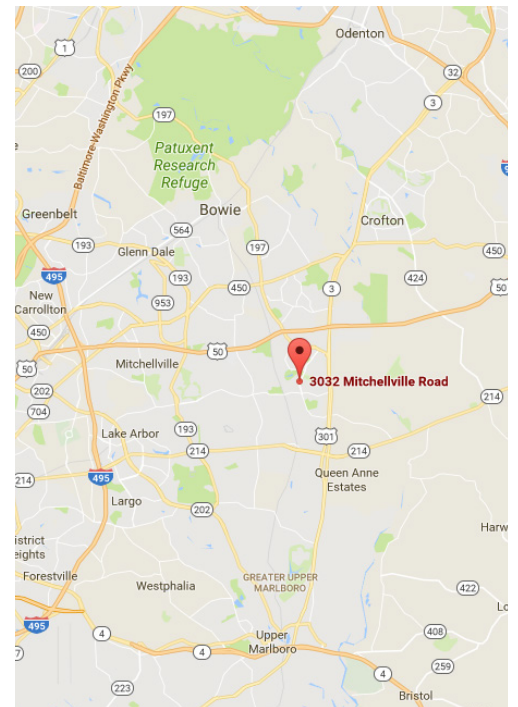
### Property Highlights

- Approximately 880 Square Feet total
- 880 Square Feet

### Property Features

- FEATURES - Turn-key 1st floor office space, high quality interior construction, windowed offices, conference rooms, private restrooms, energy efficient HVAC, upgraded finishes, wood veneer floors, and reception area
- Professional Office Park of approximately 80,000 square feet in 4 buildings, all brick construction, suburban setting, ample free parking, neighbors include professional businesses including real estate, attorneys, architect, etc.
- Major shopping centers, restaurants, motels and post office nearby. Walking distance to Kinder Care Learning Center and Parks

**SALE PRICE: \$195,000.00**



**David B. Wills**

+1 301 213 1406 | [dwills@naimichael.com](mailto:dwills@naimichael.com)

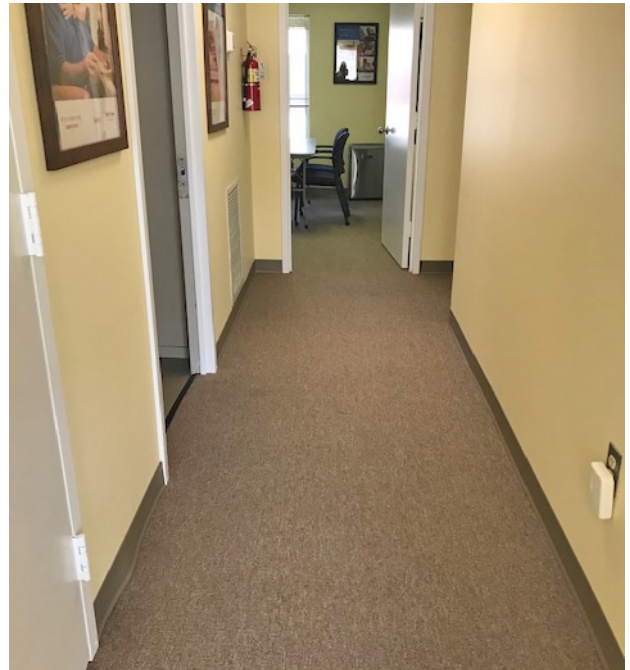
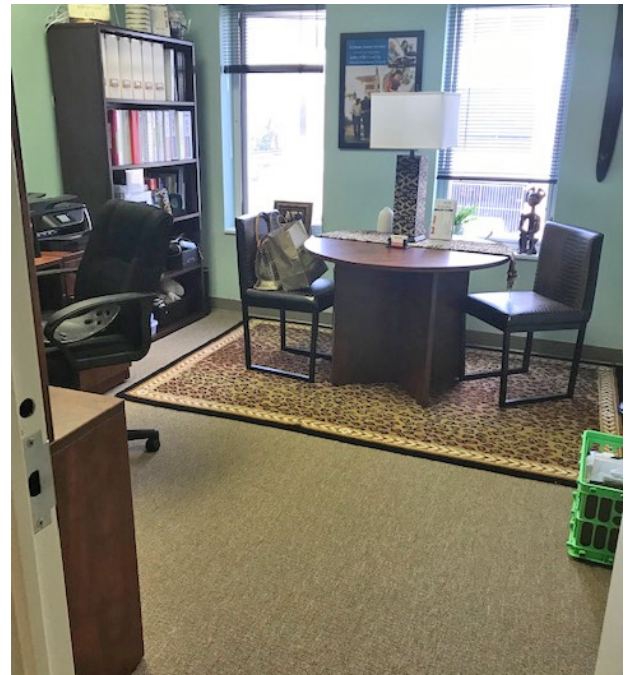
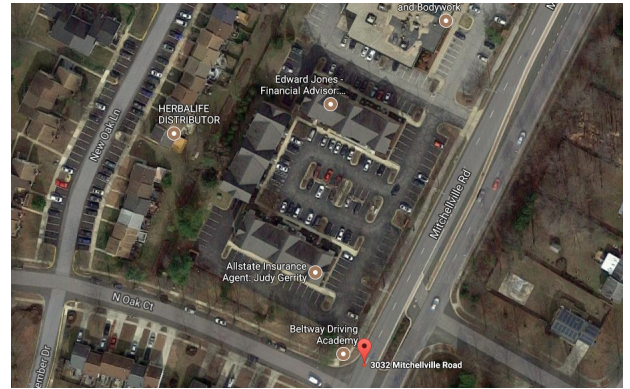
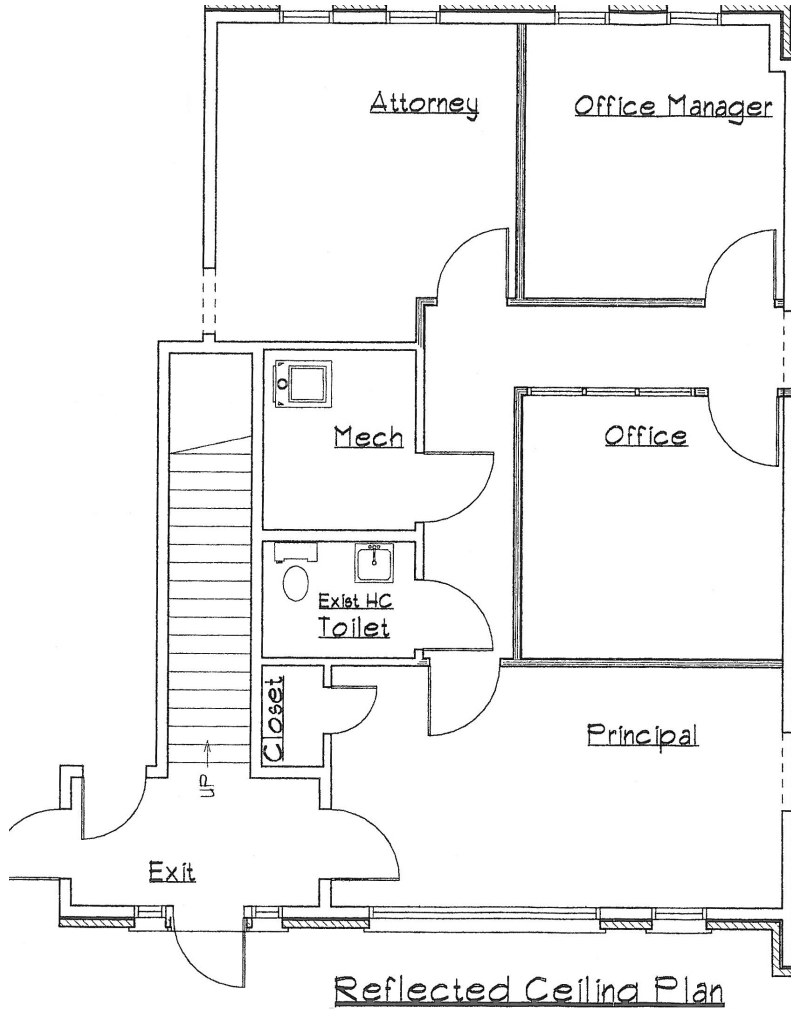
10100 Business Parkway  
Lanham, Maryland 20706

+1 301 459 4400

[naimichael.com](http://naimichael.com)

For Sale

# Office Condominium



For more information,  
please contact:

**David B. Wills**

+1 301 213 1406 | [dwills@naimichael.com](mailto:dwills@naimichael.com)

The information contained herein has been given to us by the owner of the property or other sources we deem reliable. We have no reason to doubt its accuracy, but we do not guarantee it. Floor plans, site plans and other graphic representations of this property have been reduced and reproduced, and are not necessarily to scale. All information should be verified prior to purchase or lease.



10100 Business Parkway • Lanham, Maryland 20706

+1 301 459 4400 • [naimichael.com](http://naimichael.com)