



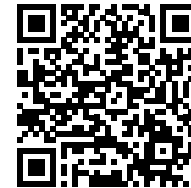
Medical Office Space For Lease

3650 W Armitage

Chicago, Illinois 60402

PROPERTY DETAILS

- 4,250 square foot fully built-out medical office space
- Asking Rent: \$28.00/SF NNN
CAM: \$11.63 | Tax: \$4.11
- Armitage Pharmacy within the building
- Controlled access
- Fenced 12-car parking lot
- Security System
- Prominent Signage
- Near bus stops
- Located in the Logan Square neighborhood, 1 mile from Healy Station (Milwaukee District North Line) and 1.6 miles from Grand/Cicero Station (North Central Line)



[Property Website](#)

[Virtual Tour](#)

Contact

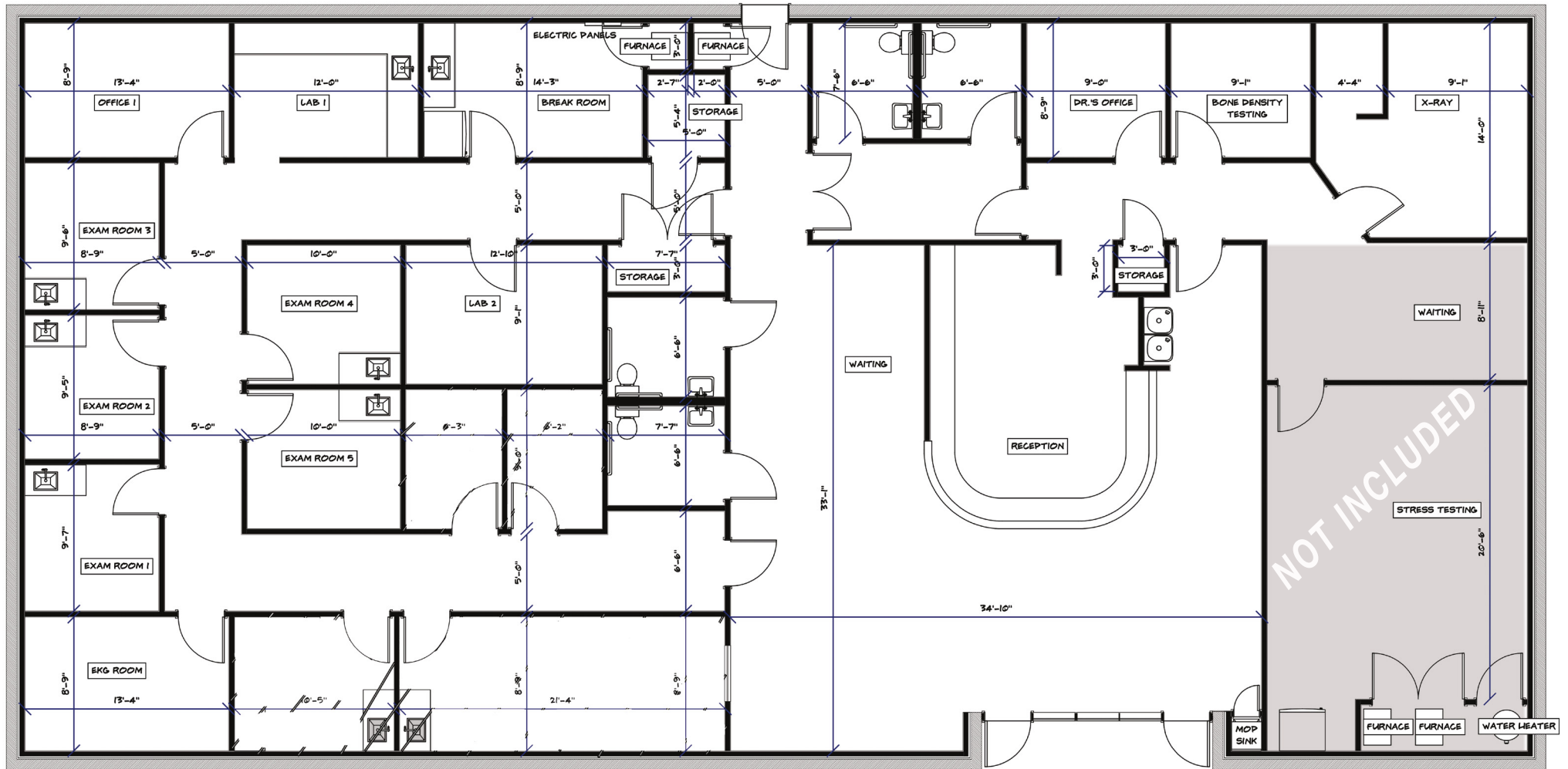
Perry Higa
+1 630 693 0684
phiga@hiffman.com

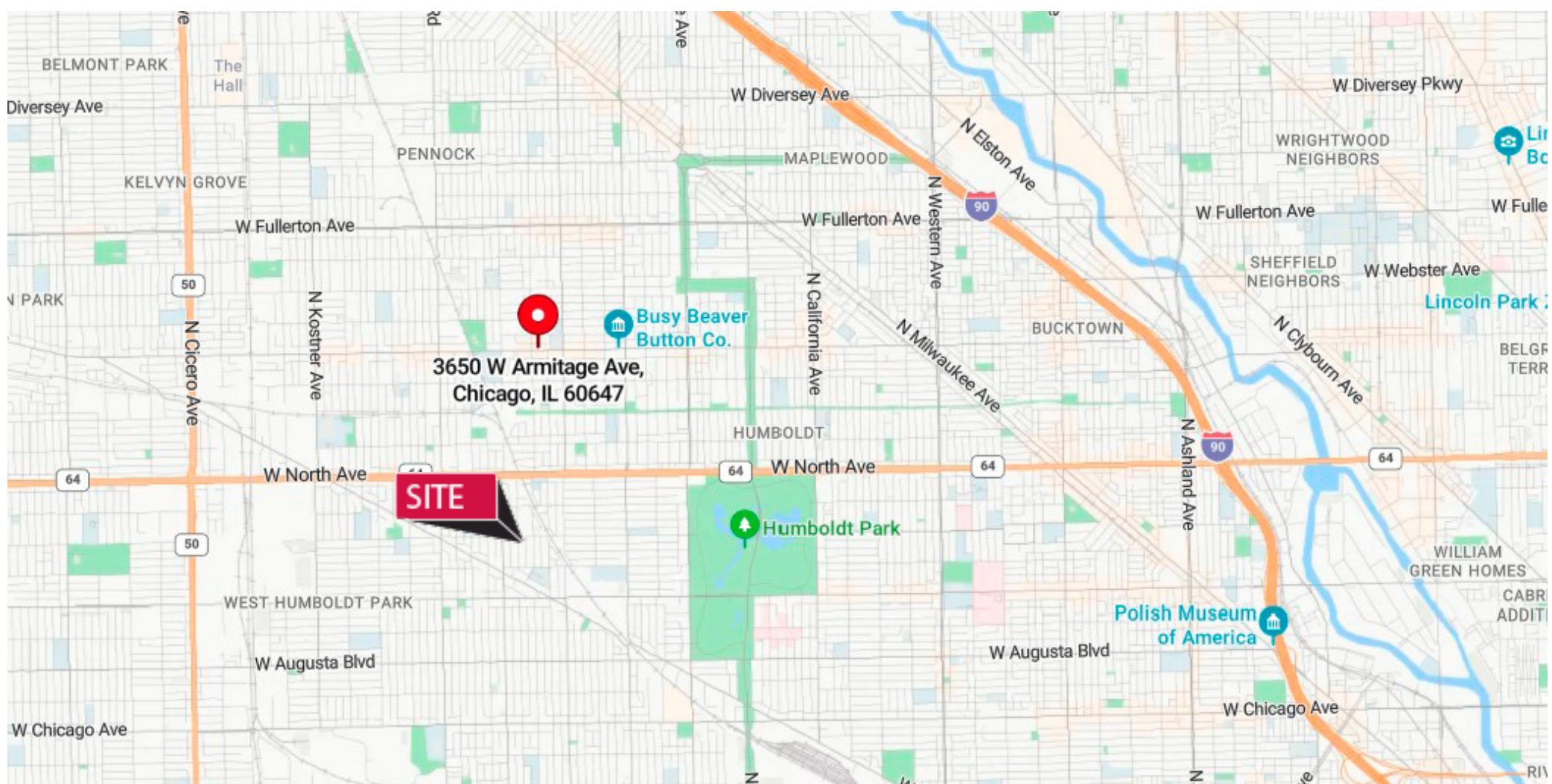
Connor Dale
+1 630 317 0766
cdale@hiffman.com

One Oakbrook Terrace
Suite 600
Oakbrook Terrace, Illinois 60181
+1 630 932 1234

3650 W ARMITAGE, CHICAGO, ILLINOIS | MEDICAL | OFFICE SPACE FOR LEASE







One Oakbrook Terrace
Suite 600
Oakbrook Terrace, Illinois 60181
+1 630 932 1234

hiffman.com