



**SAM HOUSTON  
TECHNOLOGY PARK**

1717 N SAM HOUSTON PKWY W

# SAM HOUSTON TECHNOLOGY PARK

1717 N SAM HOUSTON PKWY W

Flexible leasing depths of 100' to 145' with  
typically one column per bay

A choice of ceiling heights at 9' or 12'

High density floor loading capacity

Individual corporate signage

Electric gate -key card access

Gas available

Electrical power 480 volts 3 Phase

1400 amps available supplied by 2 main  
electrical buss

Fiber supplied by AT&T

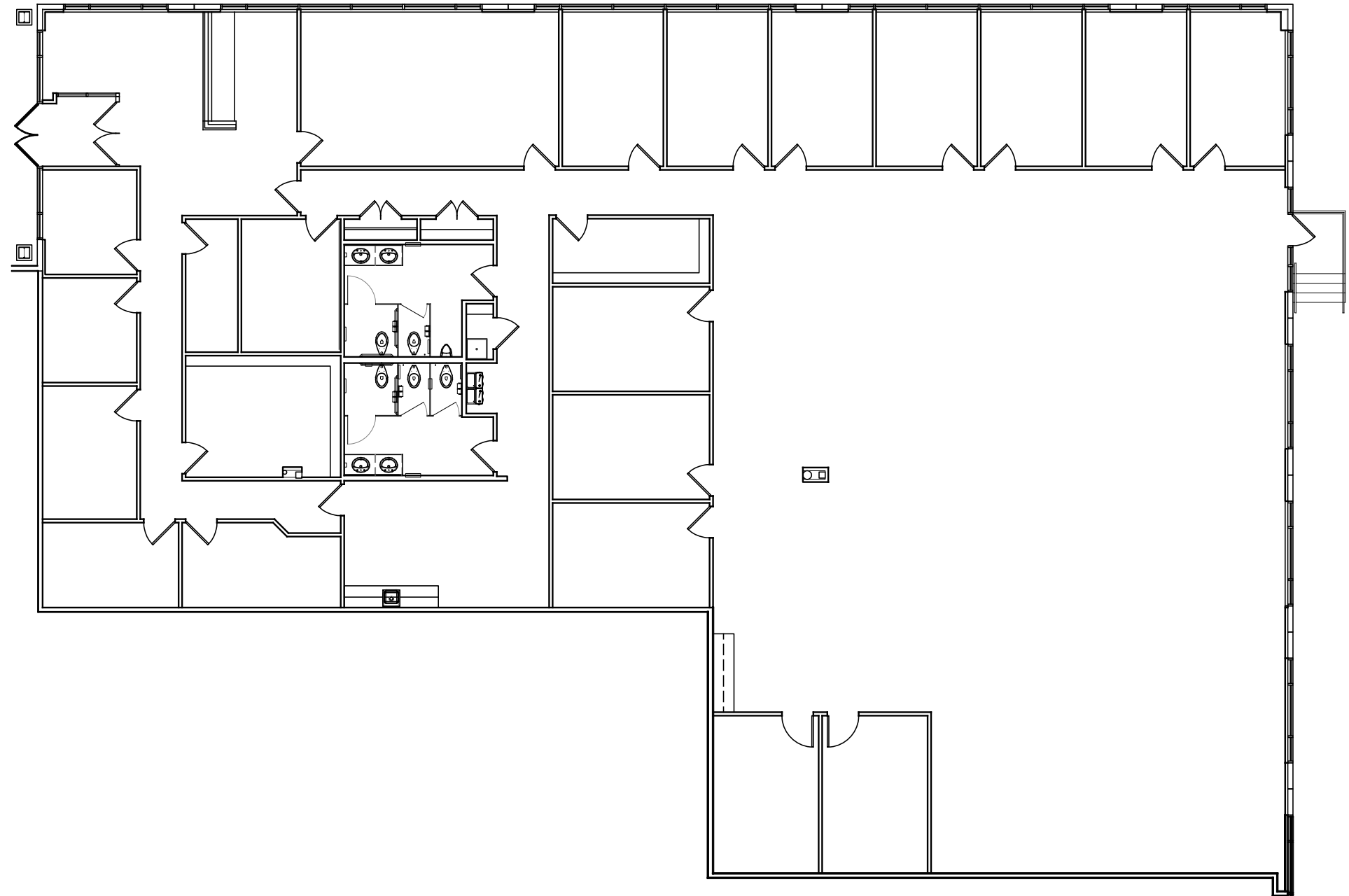
Immediate access to Beltway 8 and I-45

Adjacent to Pinto Park

7,946 RSF

# Suite 150

Closed office with large bullpen  
& signage available fronting  
Beltway 8





# Amenity Map

RESTAURANTS

- 1 IHOP  
Rico's Mexican Cafe  
Indian Grill
- 2 Monterey's Little Mexico  
Cajun Town Cafe  
Asiana Garden Restaurant  
Chef Lin's Hunan Yuan
- 3 Piazza Cafe
- 4 Anthony's Pizza
- 5 Uncle Tong's Chinese Restaurant  
Schlotzsky's Deli  
Rising Roll Gourmet  
Ichiban Japanese Seafood & Steakhouse
- 6 Prescott Grill - Marriott North  
Greenspoint
- 7 Jimmy G's Cajun Seafood Restaurant
- 8 Super Chicken
- 9 East Mesquite Grill
- 10 Waffle House
- 11 Starbucks
- 12 Ostoneria Michoan  
El Papaturre
- 13 Denny's  
Canton Chinese  
Restaurant
- 14 Pappas Seafood House
- 15 Pho Houston  
Chili's Bar and Grill  
Jalisco Mexican Food
- 16 China Buffet Restaurant  
Mambo Seafood Market
- 17 Maine-ly Sandwiches
- 18 Moon Palace Restaurant  
China Border
- 19 Bonfire Wings
- 20 Panda Express
- 21 Tampico Seafood & Cocina  
Mexicana
- 22 Tacos de Julio III
- 23 Taco Cabana

HOTELS

- 1 Hilton Houston North
- 2 Houston Marriott North
- 3 Hyatt Place Bush Intercontinental Airport
- 4 Hyatt North Houston
- 5 Residence Inn Houston at Intercontinental  
Airport
- 6 Park Inn by Radisson  
Baymont Inn & Suites
- 7 Quality Inn & Suites



# SAM HOUSTON TECHNOLOGY PARK

1717 N SAM HOUSTON PKWY W

**FOR LEASING DETAILS, CONTACT:**

**MICHELLE WOGAN**

Executive Vice President

☎ 713.270.3348

✉ [Michelle.Wogan@transwestern.com](mailto:Michelle.Wogan@transwestern.com)

**PAULA MUSA**

Senior Associate

☎ 713.231.1630

✉ [Paula.Musa@transwestern.com](mailto:Paula.Musa@transwestern.com)