

40,862 SF Lot Available
Sale Price: \$1,900,000

Property Highlights

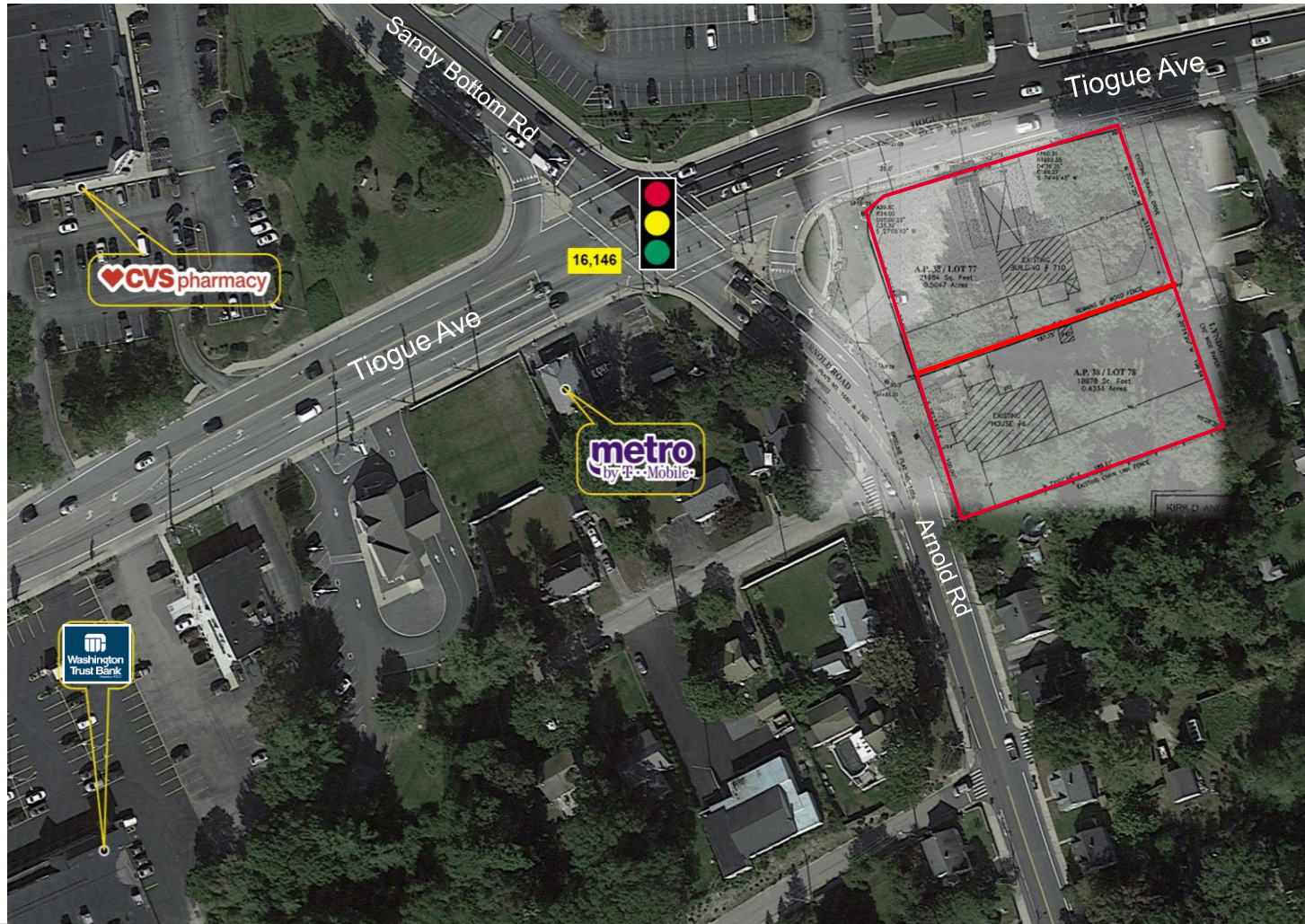
- Corner location on Tiogue Avenue & Arnold Road
- Signalized intersection
- Easy ingress and egress on Tiogue Avenue and Arnold Road
- Strong retail synergy
- CVS, Washington Trust, metro by T-Mobile, Walgreens, Stop & Shop
- Zoned GB General Business

Traffic

- Tiogue Avenue 16,146 vpd
- Arnold Road 13,522 vpd
- Sandy Bottom Road 14,902 vpd

Demos	1.0 mi	3.0 mi	5.0 mi
Pop	7,313	53,198	86,819
Med HH \$	\$67,961	\$72,588	\$80,558
Daytime Pop	2,184	16,257	37,667

BEST CORNER IN THE MARKET!!



For more information, please contact:

Bill Greene
Partner
401.273.7429
bgreene@hayessherry.com

Dave Lucivero
Partner
401.273.2068
dlucivero@hayessherry.com

146 Westminster Street, 2nd floor
Providence, RI 02903
phone: 401 273 1980
hayessherry.com

SITE PLAN

