



1457 Benvenue Rd, Rocky Mount, NC 27804

Asking Rent = \$16 per square ft (NNN)

Listing Details

Lease Type **NNN**
Property Type **Restaurant**
Subtype **General Retail**
GLA **4996 Sq Ft**
Zoning **B2CD**

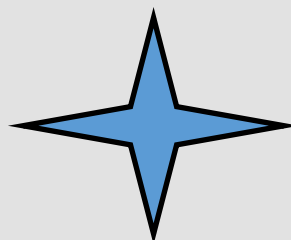
Highlights

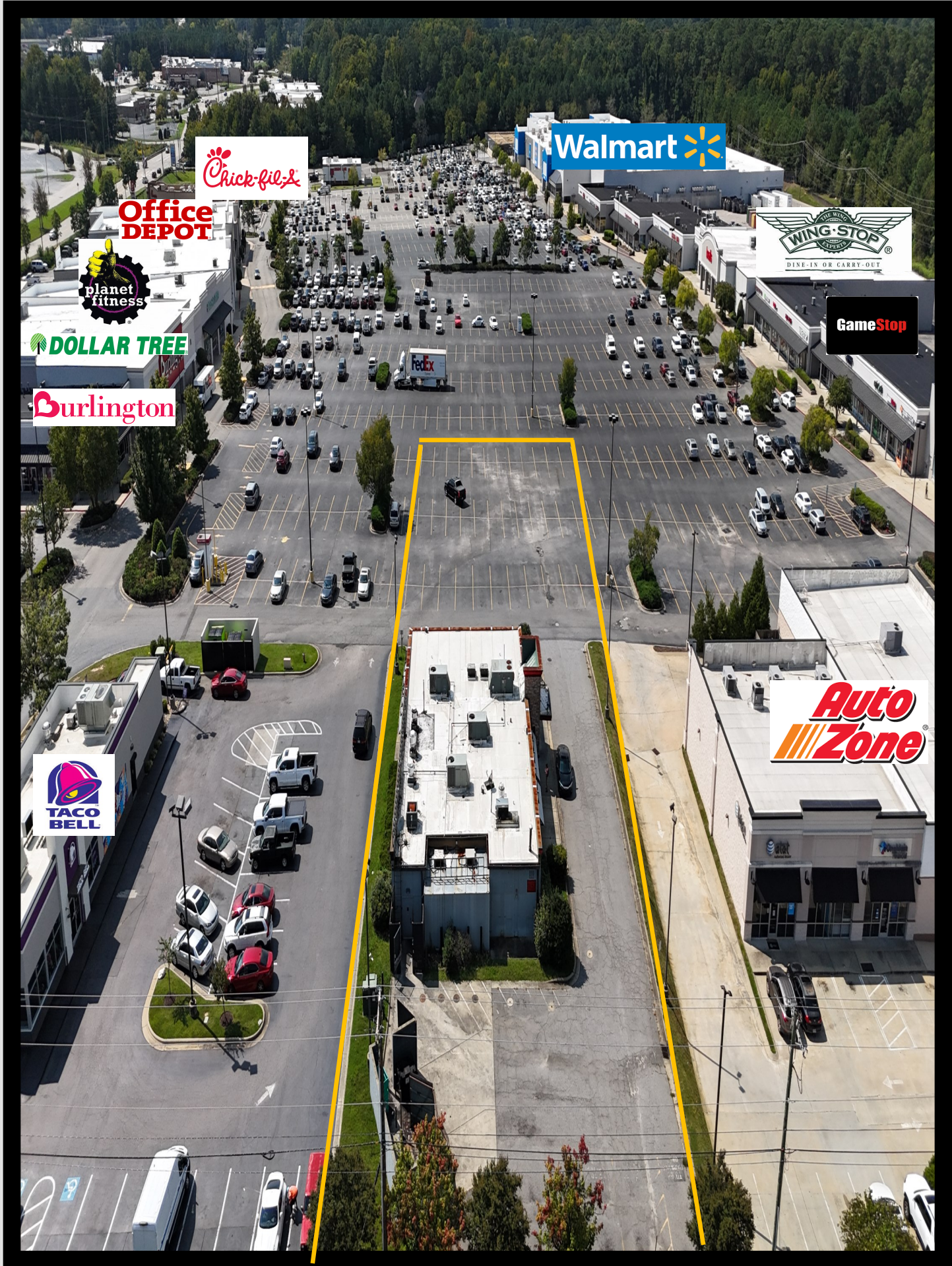
- .Located in a national commercial neighborhood
- .Located on one of the busiest city streets
- .1/4 mile from highway 301
- .Includes hood system and grease trap
- .High visibility
- .Includes indoor freezers
- .Cross easement parking
- .Next door to Taco Bell
- .Includes a bar
- .Some interior seating present

Located in Rocky Mount NC, this 2nd generation restaurant is ready to be leased out. This space was formerly a steakhouse restaurant and includes a large hood system, indoor freezers, grease trap, and more. The property is located on Rocky Mount’s busiest commercial street. The building was built in 2004 and has multiple points of entry plus plenty of parking due to a cross easement. Nearby walkable retailers include Planet Fitness, Walmart, Burlington Coat Factory, Office Deport, and more. Don’t miss this amazing opportunity.



Phillip Rabil
Phillip@chambliss-rabil.com
Mobile: (252) 382-8117
Office: (252) 443-5115
Fax: (252) 442-9487





Chick-fil-A

Walmart

Office
DEPOT

WING-STOP
DINE-IN OR CARRY-OUT

planet
fitness

GameStop

DOLLAR TREE

Burlington

TACO
BELL

Auto
Zone



JCPenney



Office
DEPOT

Chick-fil-A

DOLLAR TREE

Burlington



VPD = 22,500

VPD = 22,500

VPD = 22,500



