

High profile 1,030 SF leasing opportunity in Walmart outparcel!

Colliers

301 Angela Street Paola, Kansas

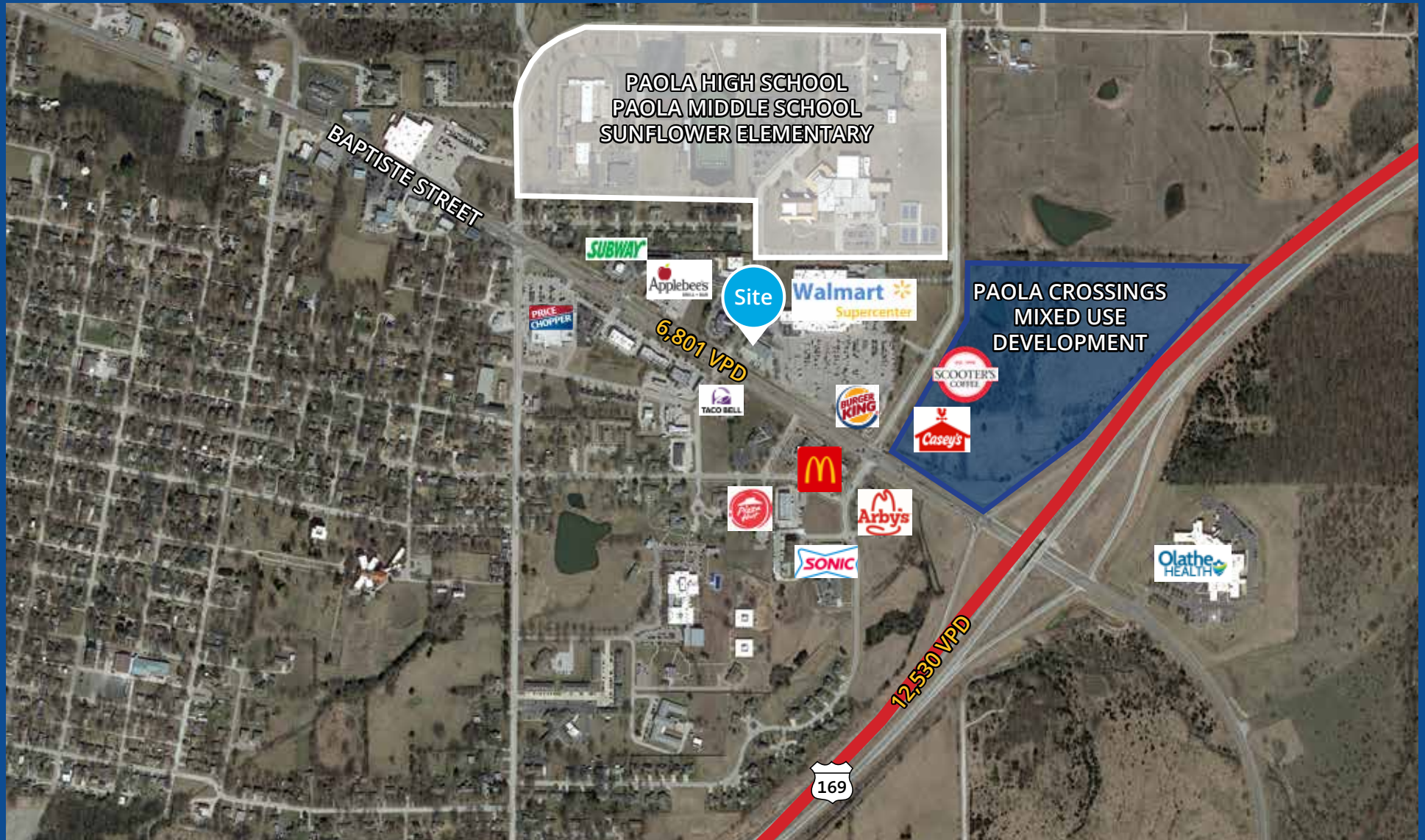
Property Features:

- Walmart outparcel space available
- 1,030 SF for lease
- Join Verizon & Rent-A-Center
- Nearby tenants include Burger King, McDonalds, Applebee's, Price Chopper
- Excellent visibility from Baptiste
- Less than a half mile from Hwy 169

2024 Demographics	3 MILE	5 MILE	15 MILE
Population	7,170	8,796	44,698
Average Household Income	\$96,762	\$100,632	\$111,550
Daytime Population	7,351	8,407	35,956
Median Age	41.5	42.7	41.2



For Lease | 301 Angela Street, Paola, Kansas



This document/email has been prepared by Colliers for advertising and general information only. Colliers makes no guarantees, representations or warranties of any kind, expressed or implied, regarding the information including, but not limited to, warranties of content, accuracy and reliability. Any interested party should undertake their own inquiries as to the accuracy of the information. Colliers excludes unequivocally all inferred or implied terms, conditions and warranties arising out of this document and excludes all liability for loss and damages arising there from. This publication is the copyrighted property of Colliers and /or its licensor(s). © 2024. All rights reserved. This communication is not intended to cause or induce breach of an existing listing agreement.

Chris Newkirk
Vice President
+1 816 556 1180
chris.newkirk@colliers.com

