

OFFICE SPACE FOR LEASE

2221 BROADWAY ST, REDWOOD CITY, CA



Plug & Play Tech Office Space in Downtown Redwood City

±8,013 SF available

Five (5) offices/conference rooms

All hands meeting room/kitchen in penthouse exclusive to tenant

Elevator access

Great natural light with operable windows

Furniture available

Two (2) blocks to Caltrain

Asking Rent: \$5.00 PSF, Full Service

JOHN MCLELLAN
415.418.9880
john.mclellan@kidder.com
LIC N° 01869489

BRETT WEBER
650.771.3000
brett.weber@kidder.com
LIC N° 00901454

DREW RAMIREZ
650.430.1433
drew.ramirez@kidder.com
LIC N° 02209477

STEVE DIVNEY
650.400.8065
steve.divney@kidder.com
LIC N° 01216239

KIDDER.COM

This information supplied herein is from sources we deem reliable. It is provided without any representation, warranty, or guarantee, expressed or implied as to its accuracy. Prospective Buyer or Tenant should conduct an independent investigation and verification of all matters deemed to be material, including, but not limited to, statements of income and expenses. Consult your attorney, accountant, or other professional advisor.



FLOOR PLAN

±8,013 SF

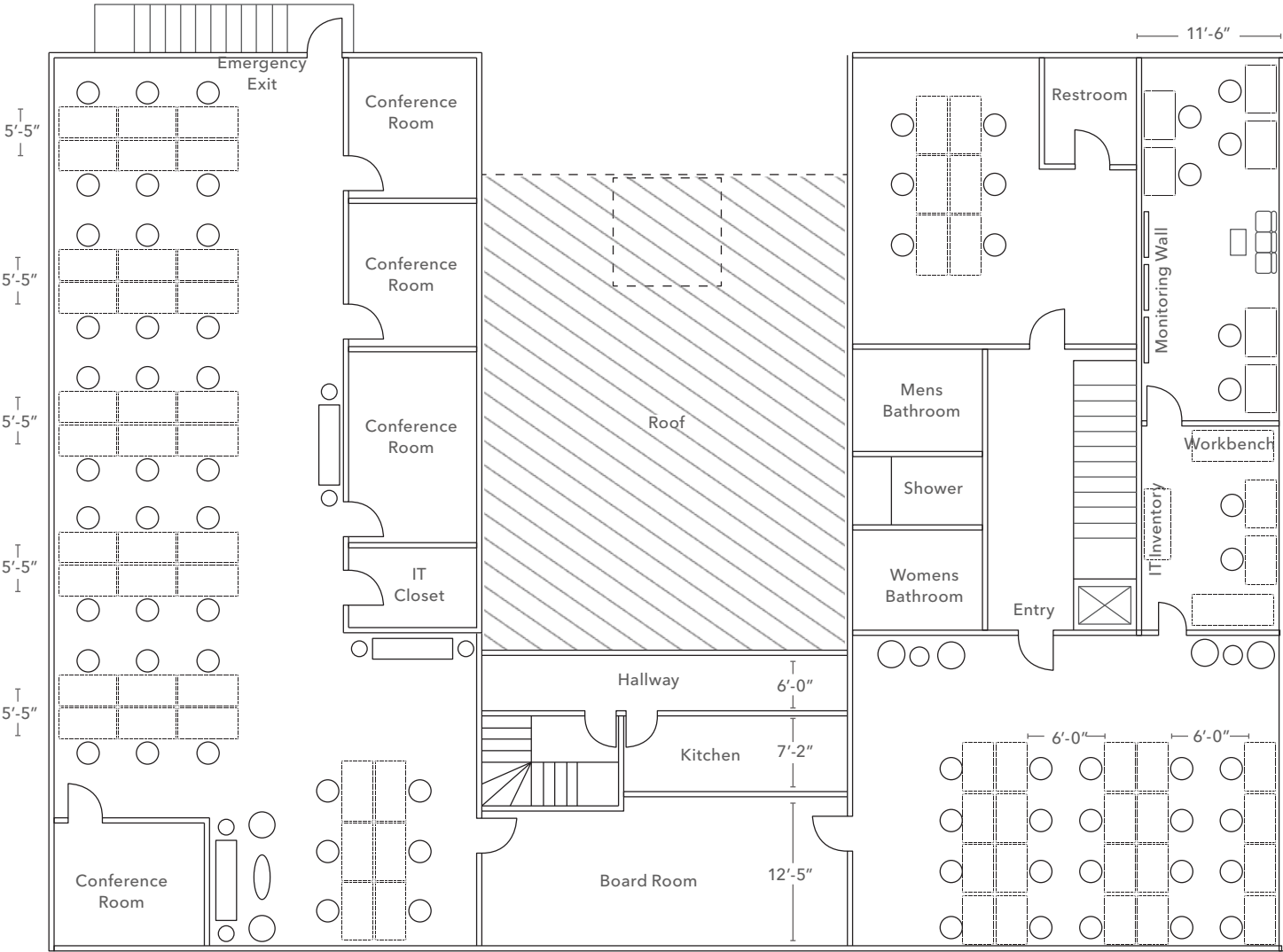
AVAILABLE

\$5.00 GROSS

LEASE RATE (SF/MO)

NOW

AVAILABLE

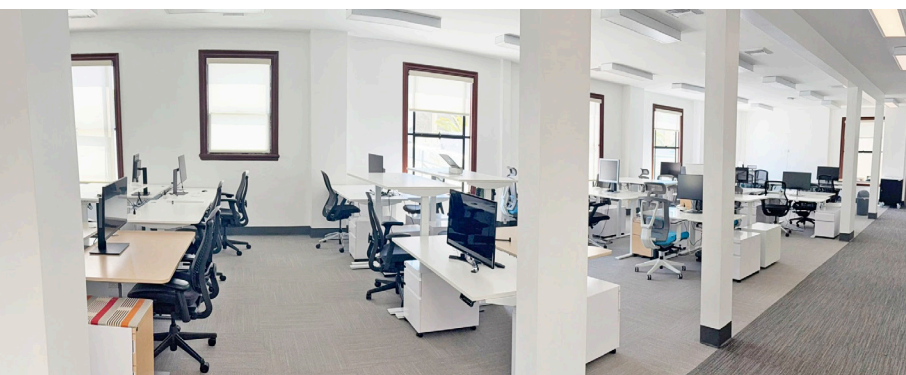


FLOOR PLAN NOT TO SCALE

KIDDER.COM

This information supplied herein is from sources we deem reliable. It is provided without any representation, warranty, or guarantee, expressed or implied as to its accuracy. Prospective Buyer or Tenant should conduct an independent investigation and verification of all matters deemed to be material, including, but not limited to, statements of income and expenses. Consult your attorney, accountant, or other professional advisor.





KIDDER.COM

This information supplied herein is from sources we deem reliable. It is provided without any representation, warranty, or guarantee, expressed or implied as to its accuracy. Prospective Buyer or Tenant should conduct an independent investigation and verification of all matters deemed to be material, including, but not limited to, statements of income and expenses. Consult your attorney, accountant, or other professional advisor.

EAT + DRINK

- | | |
|-----------------------|-------------------------|
| 01 Go Fish Poke | 13 Quinto Sol |
| 02 Starbucks Reserve | 14 Bluefin Sushi |
| 03 Philz Coffee | 15 Sana'a Coffee |
| 04 Coffeebar RWC | 16 The Sandwich Spot |
| 05 Mazra | 17 Peet's Coffee |
| 06 Vesta | 18 The Hub RWC |
| 07 Bao | 19 Five Guys |
| 08 LV Mar | 20 Das Bierhaus |
| 09 The Blacksmith | 21 Pizza My Heart |
| 10 Pizzeria Cardamomo | 22 Vitality Bowl |
| 11 Ocean Oyster Bar | 24 West Park Farm & Tea |
| 12 Von's Kitchen | 25 Chipotle |
| | 26 Marufuku Ramen |

- | |
|-------------------------|
| 27 Timber & Salt |
| 28 Limon |
| 29 Donato Enoteca |
| 30 Milagros |
| 31 The Baker Next Door |
| 32 The Striped Pig |
| 33 Noah's NY Bagels |
| 34 Habit Burger & Grill |
| 35 Pasha Mediterranean |
| 36 Angelica's |

BANKS & FINANCIAL

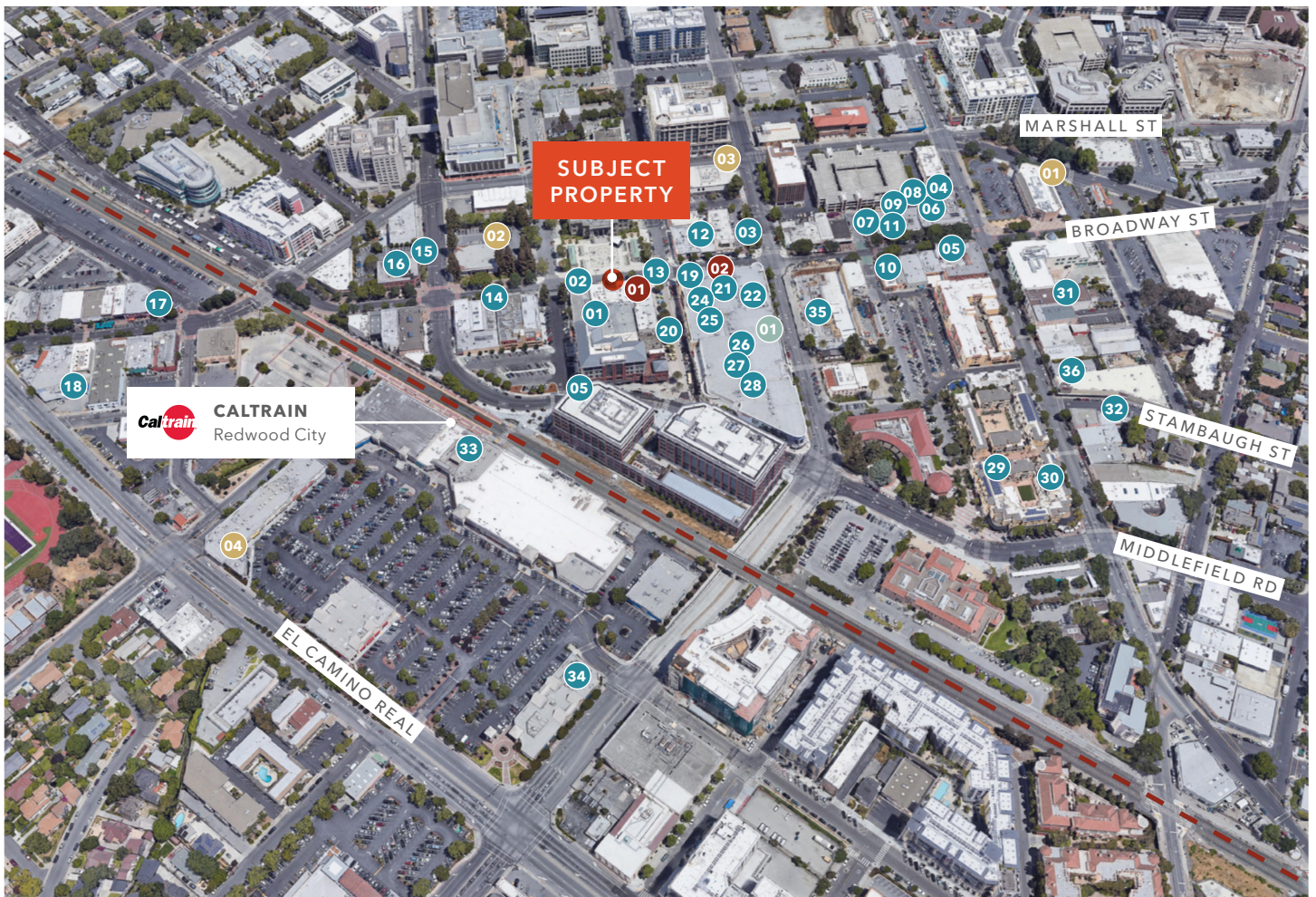
- | |
|--------------------|
| 01 Wells Fargo |
| 02 Chase Bank |
| 03 Bank of America |
| 04 Citibank |

ARTS & CULTURE

- | |
|-----------------------|
| 01 Fox Theatre |
| 02 Century 20 Theatre |

SPORTS & LEISURE

- | |
|-------------------|
| 01 Powerhouse Gym |
|-------------------|



KIDDER.COM

This information supplied herein is from sources we deem reliable. It is provided without any representation, warranty, or guarantee, expressed or implied as to its accuracy. Prospective Buyer or Tenant should conduct an independent investigation and verification of all matters deemed to be material, including, but not limited to, statements of income and expenses. Consult your attorney, accountant, or other professional advisor.