

Oxford Companies
734.665.6500
oxfordcompanies.com

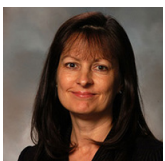


Integrated
Real Estate
Services



Office Building For Lease
555 Briarwood Circle
Suite 150
Ann Arbor, MI 48108

2,942 SF
\$23.50 SF/yr (MG)
Available



Contact Karen O'Neil for
more information or to
schedule a tour.

Office: 734.665.6500
Cell: 734.323.4263
koneil@oxfordcompanies.com

555 Briarwood Circle
Suite 150
Ann Arbor, MI 48108



Integrated
Real Estate
Services



OFFERING SUMMARY

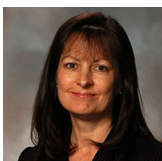
Lease Rate:	\$23.50 SF/yr (MG)
Available SF:	2,942 SF
Year Built:	1986
Renovated:	2014
Ceiling Height:	8'
Parking Ratio:	3.9
Zoning:	TC1
Submarket:	South Side Ann Arbor

PROPERTY OVERVIEW

Directly at the hub of Ann Arbor's bustling Southside neighborhood, 555 Briarwood Circle is ideal for organizations looking for a superior Ann Arbor office location and outstanding nearby amenities. Adjacent to Briarwood Mall, the building offers dining, shopping, and lodging all within walking distance.

PROPERTY HIGHLIGHTS

- Located adjacent to Briarwood Mall
- Immediate access to I-94 via S. State St. exit
- Six minutes to downtown Ann Arbor & U-M
- 25 minutes to Detroit Metro Intl Airport
- Within walking distance to hotels and restaurants including: Buffalo Wild Wings, Red Robin, Olive Garden, Anna's House & more
- Streamlined leasing experience for convenience and ease
- Locally-owned and professionally managed
- 24/7 on-call emergency maintenance



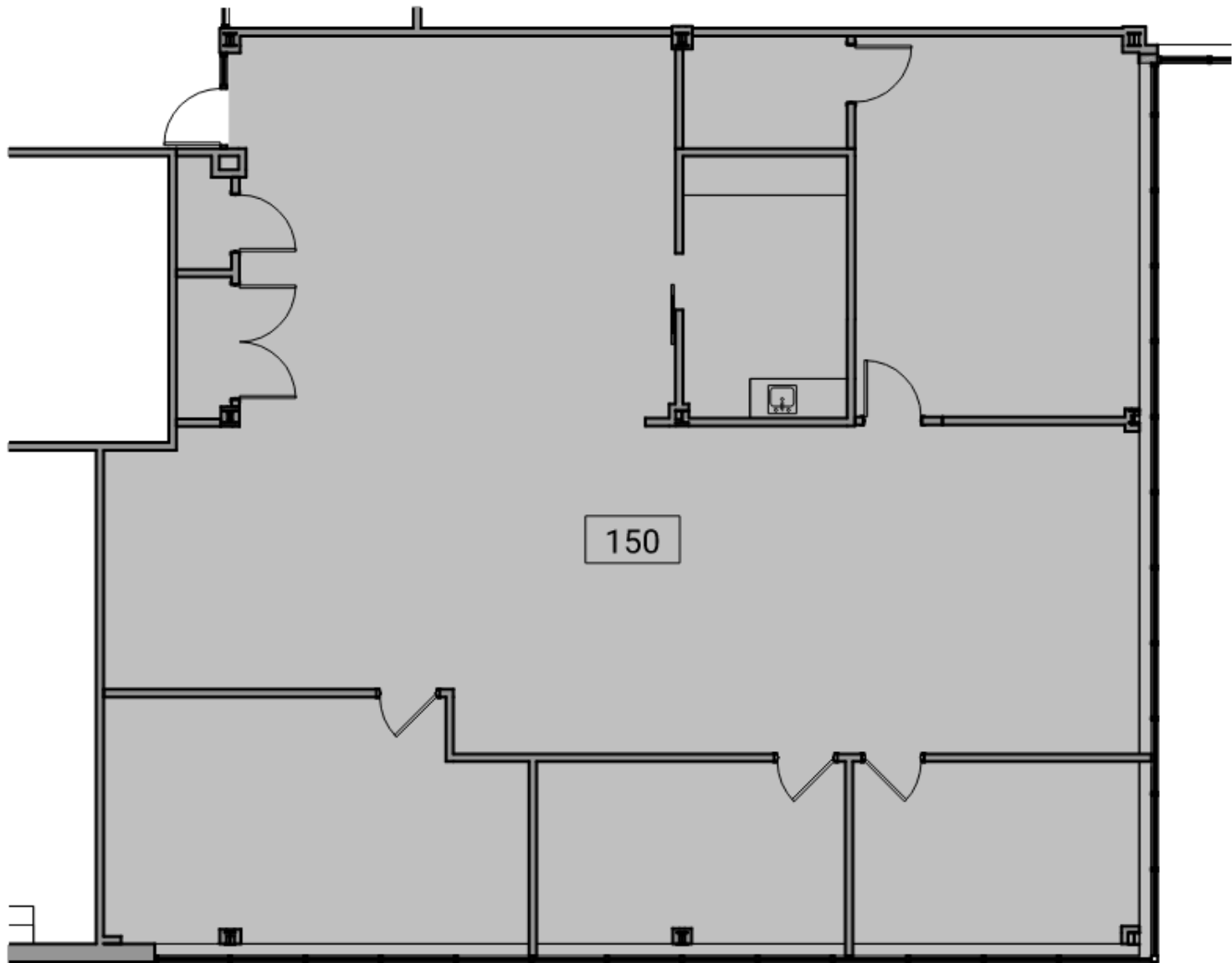
Contact Karen O'Neil for more information or to schedule a tour.

Office: 734.665.6500
Cell: 734.323.4263
koneil@oxfordcompanies.com

555 Briarwood Circle
Suite 150
Ann Arbor, MI 48108



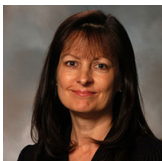
Integrated
Real Estate
Services



N
2 Suite 150 - Partial Level 1 Existing Floor Plan
150 10' 20' 1" = 10'-0"



N
1 Key Plan - Level 1
150 100' 200' 1" = 100'-0"



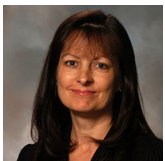
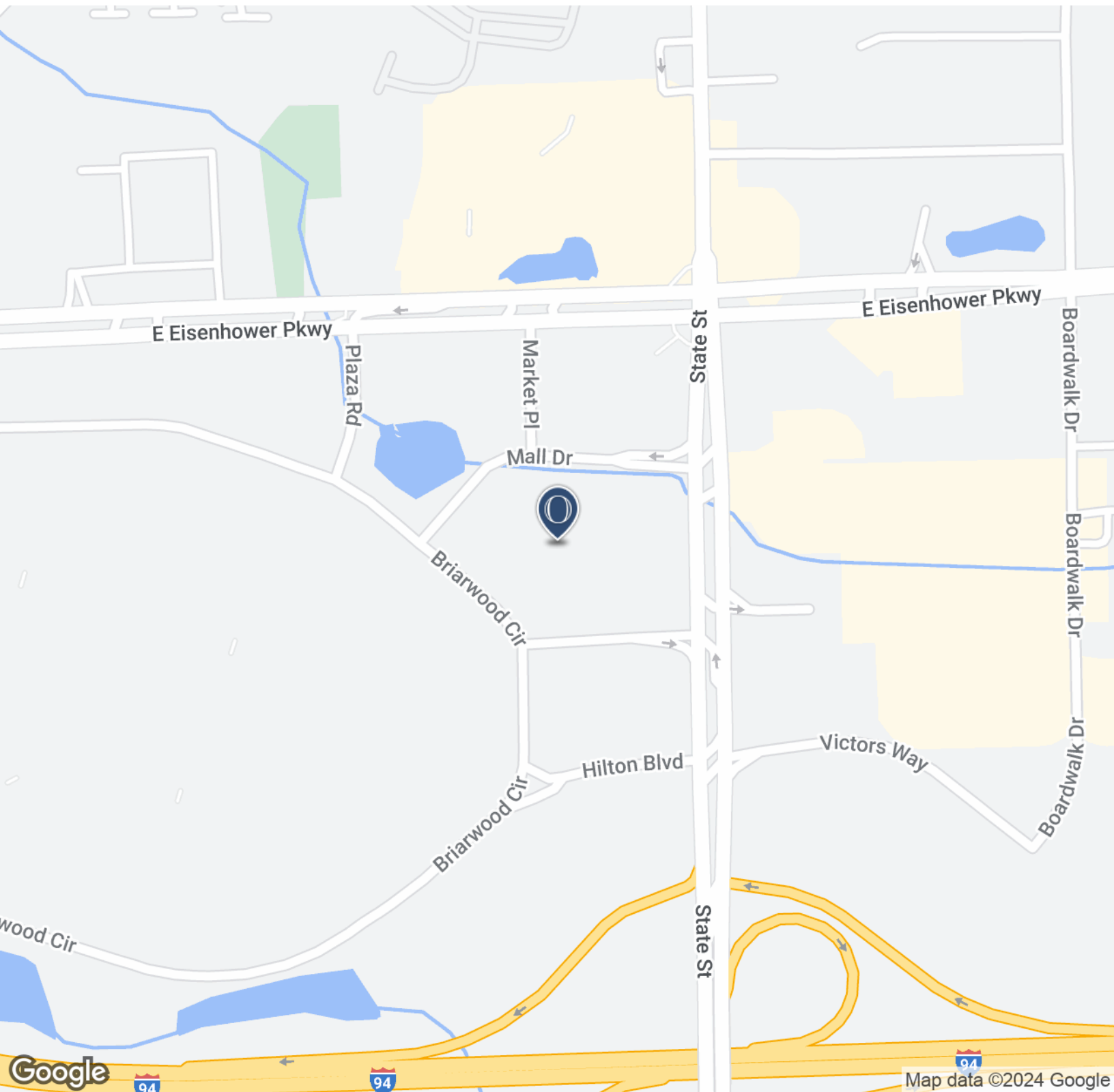
Contact Karen O'Neil for more information or to schedule a tour.

Office: 734.665.6500
Cell: 734.323.4263
koneil@oxfordcompanies.com

555 Briarwood Circle
Suite 150
Ann Arbor, MI 48108



Integrated
Real Estate
Services



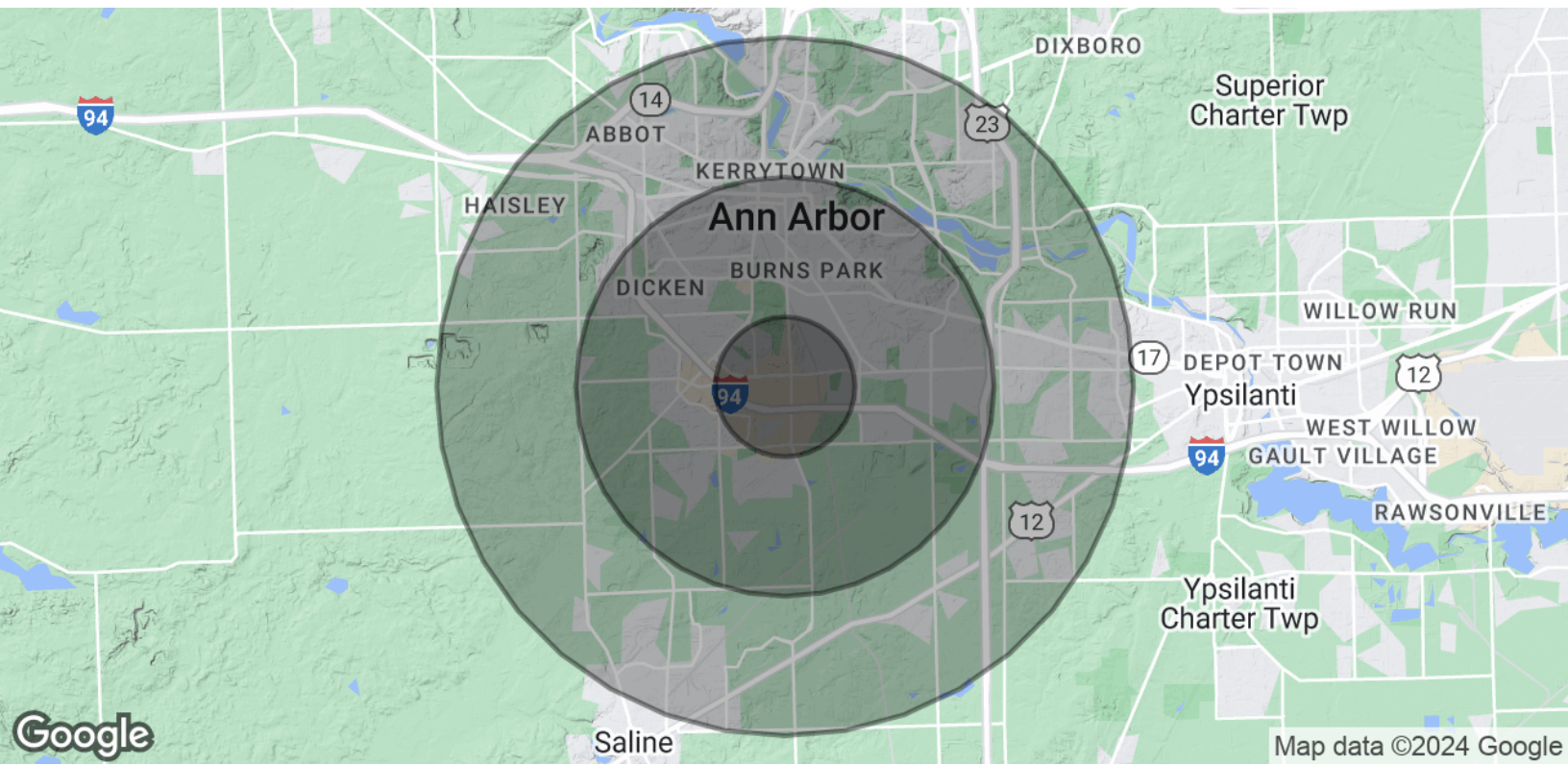
Contact Karen O'Neil for
more information or to
schedule a tour.

Office: 734.665.6500
Cell: 734.323.4263
koneil@oxfordcompanies.com

555 Briarwood Circle
 Suite 150
 Ann Arbor, MI 48108



Integrated
 Real Estate
 Services



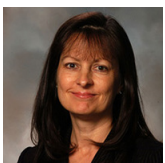
POPULATION

	1 MILE	3 MILES	5 MILES
Total Population	9,311	93,090	182,997
Average age	31.6	31.4	32.8
Average age (Male)	31.9	31.3	32.5
Average age (Female)	31.1	31.4	33.2

HOUSEHOLDS & INCOME

	1 MILE	3 MILES	5 MILES
Total households	4,650	35,915	71,140
# of persons per HH	2.0	2.6	2.6
Average HH income	\$59,804	\$77,332	\$79,472
Average house value	\$117,554	\$321,105	\$320,385

* Demographic data derived from 2020 ACS - US Census



Contact Karen O'Neil for more information or to schedule a tour.

Office: 734.665.6500
 Cell: 734.323.4263
koneil@oxfordcompanies.com