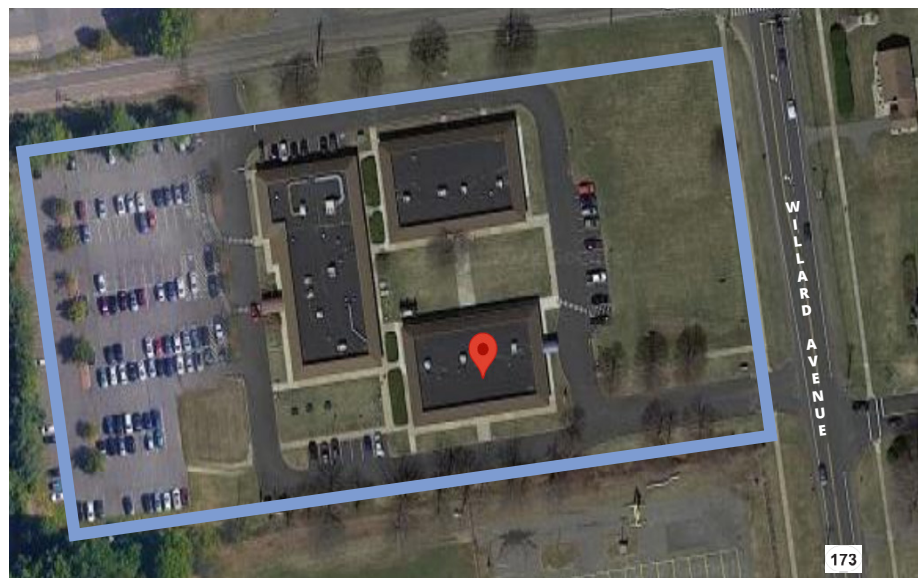


Constitution Office Park

505 Willard Avenue | Newington, CT



Constitution Office Park is a 3 building medical office park located on Willard Avenue in Newington, CT. There is currently a 5,704 SF suite available in Building 2 of the Office Park. Constitution Office Park offers multiple mature courtyards, close proximity to amenities and easy access from many locations.



For further information, please contact:

Maury Smith | D 860.327.8304 | C 860.748.2508 | maury.smith@avisonyoung.com

Avison Young | 225 Asylum Street, 16th Floor | Hartford, CT 06103 | T 860.327.8330

BUILDING & LOCATION DETAILS



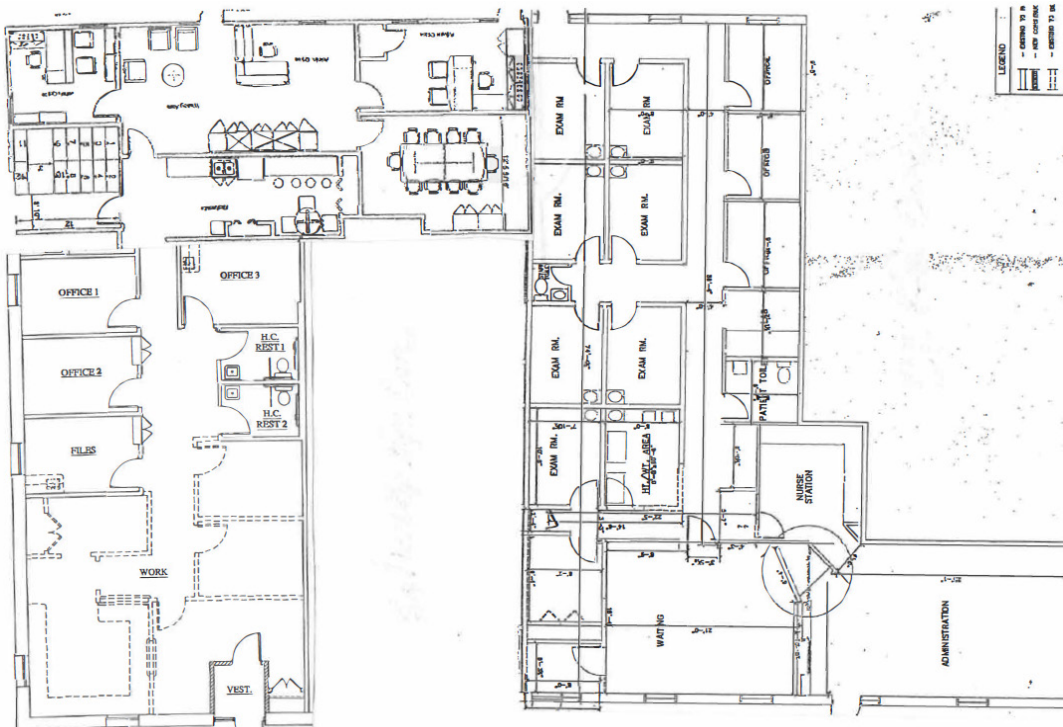
Size: 5,704 square feet
Year Built: 1979
Parking: 2.82:1,000
Access: Close Proximity to Berlin Turnpike, I-84 and I-91



Located on Willard Avenue with access to I-84 & I-91



5,704 SF AVAILABLE | BUILDING 2



For further information, please contact:

Maury Smith | D 860.327.8304 | C 860.748.2508 | maury.smith@avisonyoung.com

Avison Young | 225 Asylum Street, 16th Floor | Hartford, CT 06103 | T 860.327.8330

**AVISON
YOUNG**