

241 Water Street

FINANCIAL DISTRICT
NEW YORK, NY

STANDING
7 Days
4pm
Tuesday
Friday
30am - 1pm

NOTICE

241

NEWMARK

241 WATER STREET

Property Details

Location

East block between Peck Slip and Beekman Street

Approximate Size

Ground Floor	7,186 SF
Second Floor	6,617 SF
Third Floor	5,260 SF
Fourth Floor	5,205 SF
Fifth Floor	4,011 SF
Sixth Floor	3,235 SF
Total	31,514 SF

Term

Long Term

Frontage

100 FT on Water Street

Possession

Immediate

Site Status

Formerly Blue School

Neighbors

South Street Seaport, IPIC Theaters, Tin Building by Jean-Georges, Pier 17 and Fulton

Comments

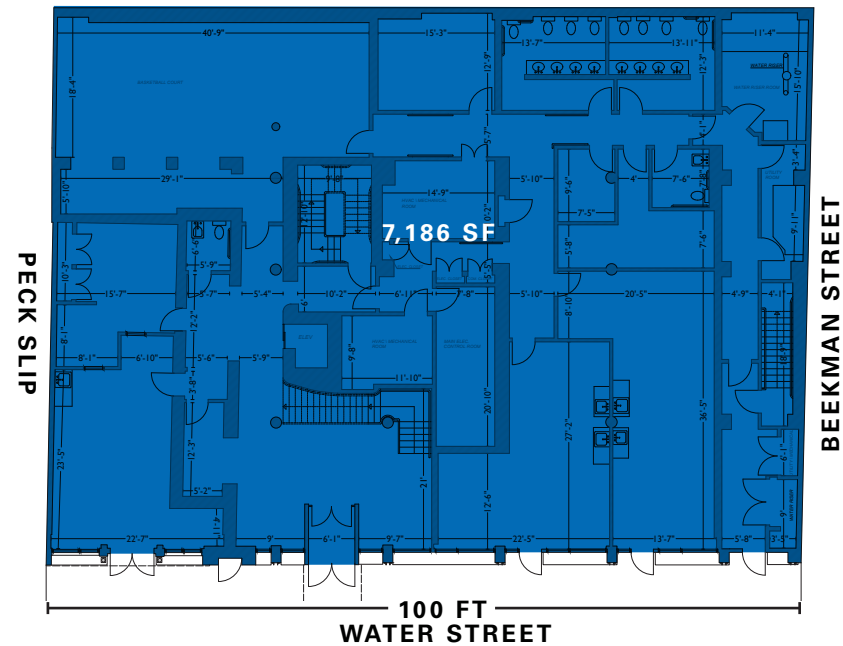
Entire building and former school opportunity can be built-out for retail, medical use, educational space or private members club

There are various outdoors spaces and interior double-height ceilings throughout the building

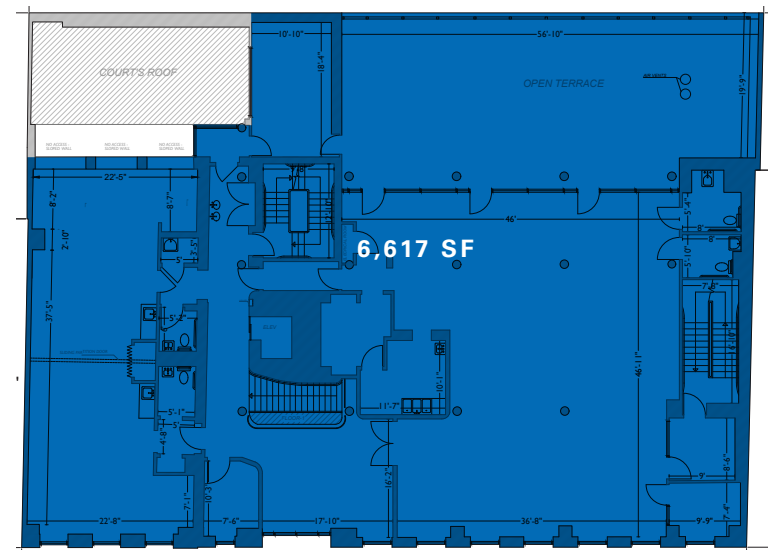
This building sits adjacent to Howard Hughes' thriving The Seaport project

Being offered for lease or sale

Ground Floor

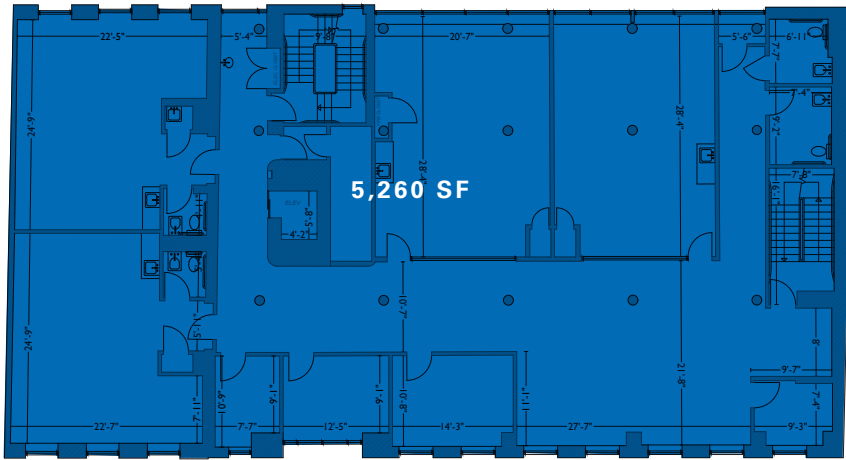


Second Floor

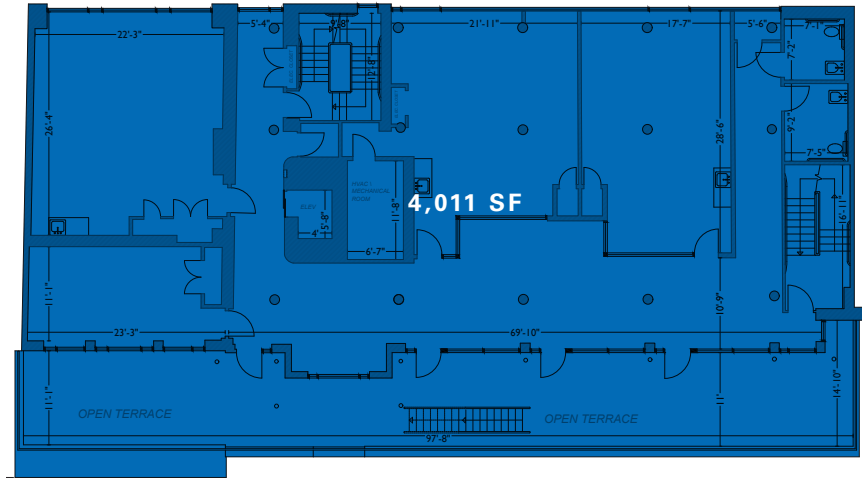


Property Details

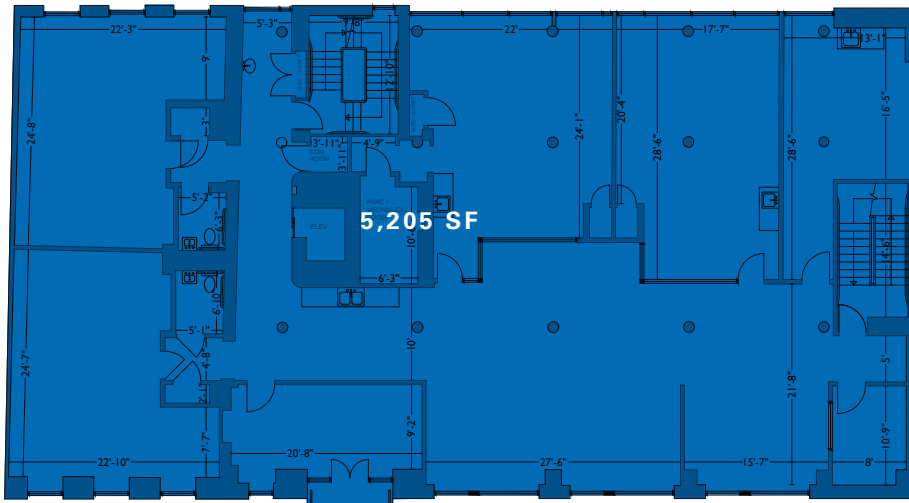
Third Floor



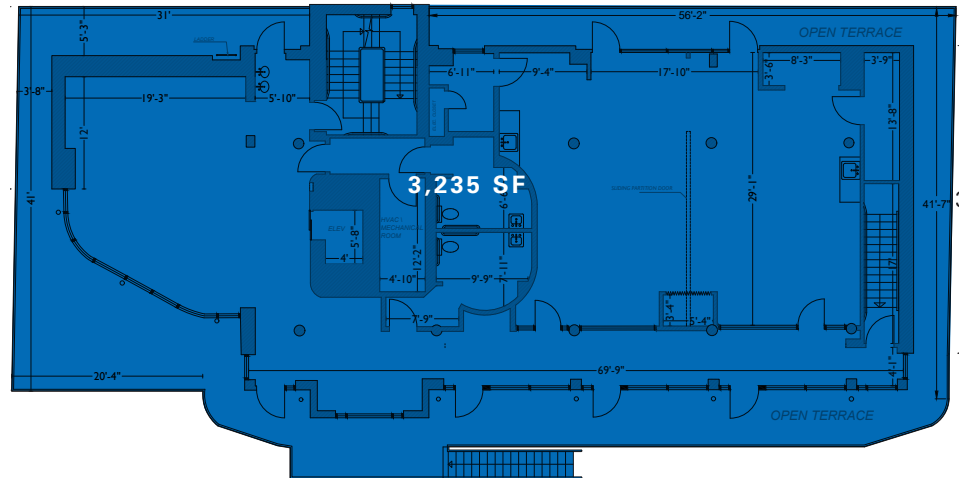
Fifth Floor



Fourth Floor



Sixth Floor



Interior Photos



Interior Photos



241 WATER STREET

Seaport Neighborhood



241 WATER STREET



CONTACT

Peter Whitenack
t 212-331-0128
peter.whitenack@nrmk.com

nrmk.com

+ COMING SOON