

# 162.43 ACRES BEACH RANCH

MECCA, CA

OPPORTUNITY  
ZONE

**SITE**

HIGHWAY 111

**S HIGHWAY 111 & E OF CLEVELAND ST, MECCA, CA**

## FEATURES

- Previously farmed to citrus & table grapes
- Fertile farm ground along the Salton Sea
- Reservoir and filter station
- Underground drip irrigation
- Zoned commercial along Highway 111
- Currently leased until June 30, 2026
- In Opportunity Zone, providing potential tax incentives
- Abundant and affordable Coachella Valley Water District (CVWD) irrigation water, one of the lowest water rates in California

**PRICE: \$3,654,675 (\$22,500/AC)**

## COACHELLA VALLEY



**VICINITY MAP**



8/21/25 JC



**SUSAN HARVEY**

DRE #00957590  
susan@dppllc.com  
Cell: 760.250.8992



**EMILY HARVEY**

DRE #02229612  
emily@dppllc.com  
Cell: 760.636.3500

**DesertPacificProperties.com 760.360.8200**



# 162.43 ACRES BEACH RANCH

## AERIAL & SITE AMENITIES



## SITE AMENITIES

- **Location:** Property is located on the south side of Highway 111 just east of Cleveland Street in Mecca, CA.
- **Parcel Size:** ±162.43 acres
- **APNs:** 725-100-007, 011, 012; 725-110-003, 006, 007
- **Zoning:** [C-P-S \(Scenic Highway Commercial\)](#); [W-2 \(Controlled Development\)](#); [W-1 \(Watercourse, Watershed, and Conservation Areas\)](#)
- **General Plan:** Agriculture; Open Space - Water
- **Agricultural Preserve:** No
- **Utilities:** Water: 16" line in Grapefruit Blvd (Hwy 111)  
Irrigation Water: Yes; Meter #3405, 3404, & 8011  
Sewer: No sewer in the area
- **Tile Drains:** Yes, TD-613
- **Soils Type:** CdC (Carsitas gravelly sand, 0 to 9 percent slopes); CrA (Coachella fine sand, wet, 0-2% slopes); McB (Myoma fine sand, wet, 0-5% slopes); W (Water)
- **Lease:** Leased until June 30, 2026. Landlord may terminate the lease with 6 months' written notice.
- **Reservoir:** Yes

SCAN OR CLICK THE QR CODE



### PROPERTY VIDEO

Take a look at a video of the property.

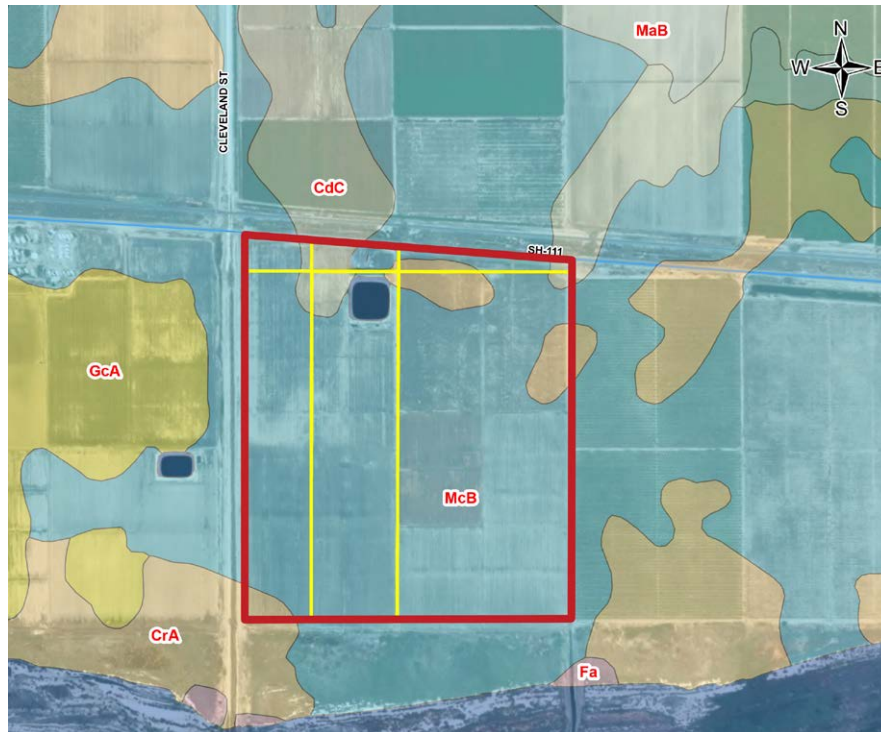
760.360.8200 | [DesertPacificProperties.com](https://DesertPacificProperties.com) | 44267 Monterey Ave, Palm Desert, CA 92260

Disclaimer: The information provided has been obtained from sources believed reliable. While we do not doubt its accuracy, we have not verified it and make no guarantee, warrant or representation about it. Buyer is strongly encouraged to independently confirm its accuracy and completeness. Any projections, opinions, assumptions or estimates used are for example only, and may not accurately represent the current or future performance of the property.

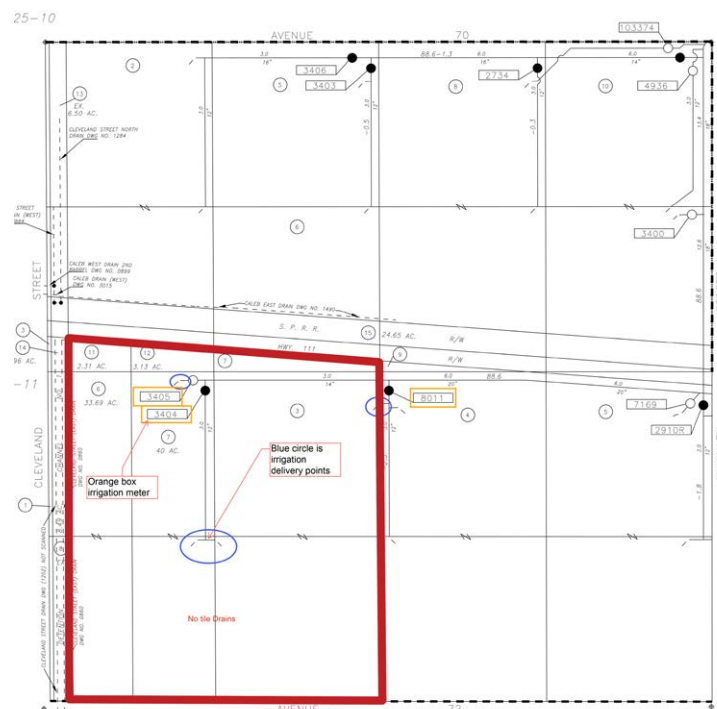
# 162.43 ACRES BEACH RANCH

## IRRIGATION & SOILS MAPS

### SOILS MAP



### IRRIGATION MAP



760.360.8200 | [DesertPacificProperties.com](http://DesertPacificProperties.com) | 44267 Monterey Ave, Palm Desert, CA 92260

Disclaimer: The information provided has been obtained from sources believed reliable. While we do not doubt its accuracy, we have not verified it and make no guarantee, warrant or representation about it. Buyer is strongly encouraged to independently confirm its accuracy and completeness. Any projections, opinions, assumptions or estimates used are for example only, and may not accurately represent the current or future performance of the property.



# 162.43 ACRES BEACH RANCH

## PROPERTY PHOTOS



760.360.8200 | [DesertPacificProperties.com](http://DesertPacificProperties.com) | 44267 Monterey Ave, Palm Desert, CA 92260

Disclaimer: The information provided has been obtained from sources believed reliable. While we do not doubt its accuracy, we have not verified it and make no guarantee, warrant or representation about it. Buyer is strongly encouraged to independently confirm its accuracy and completeness. Any projections, opinions, assumptions or estimates used are for example only, and may not accurately represent the current or future performance of the property.