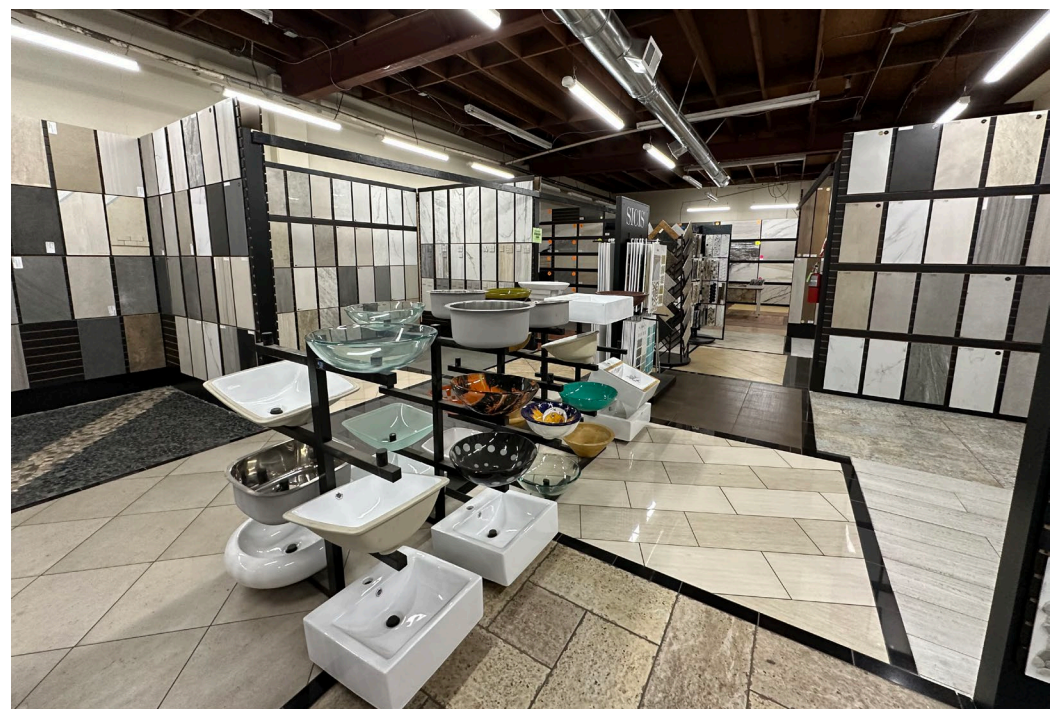
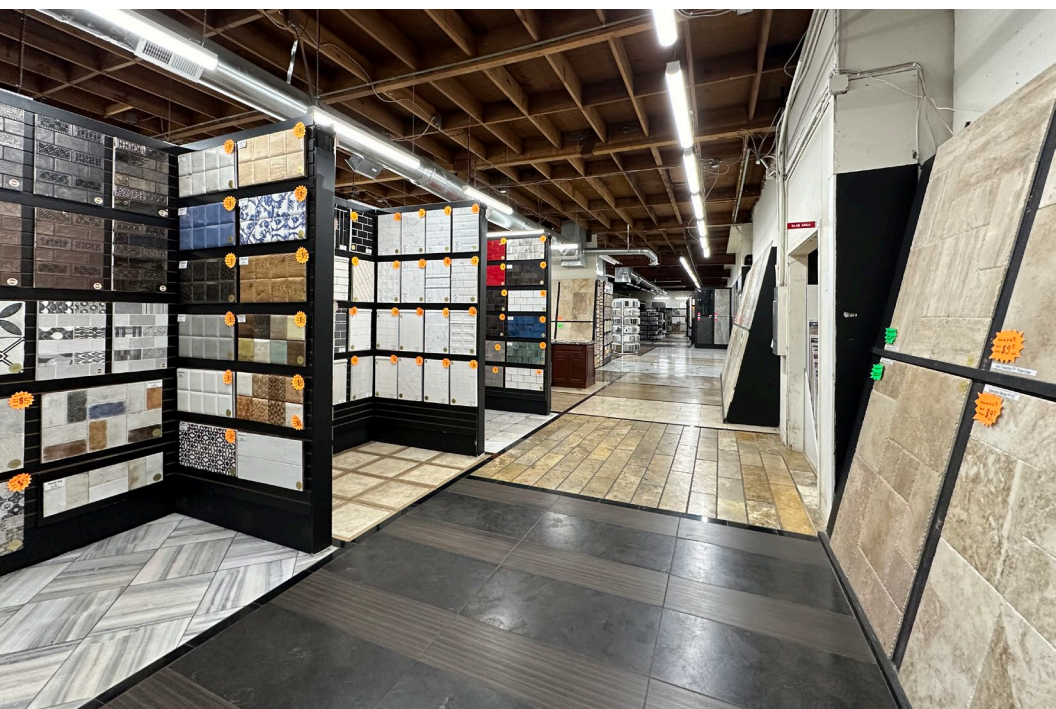


FOR LEASE: Showroom / Industrial w/Yard - 12,000 SF



1785 Rogers Avenue, San Jose, CA

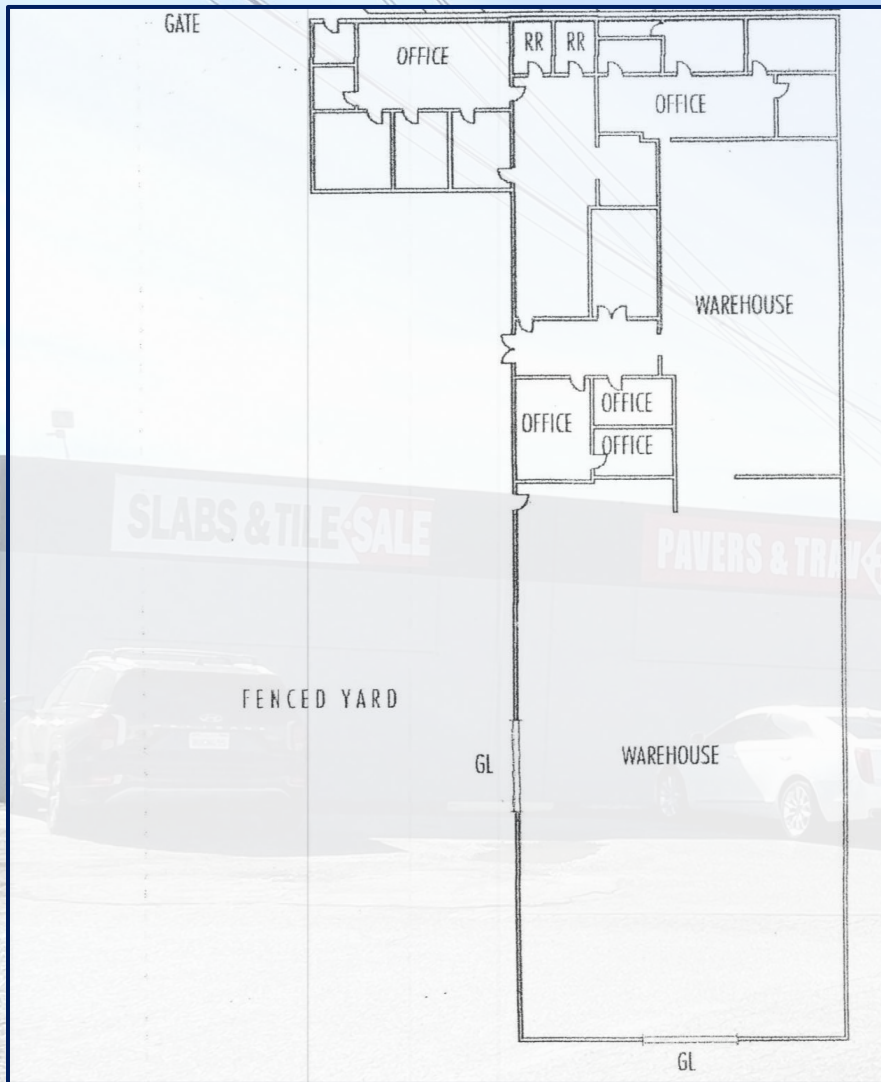
[www.GlobalCommercialProp.com](http://www.GlobalCommercialProp.com)

**Ralph Longo**  
**408-529-1362**

DRE# 01202211

[rlongo@globalcommercialprop.com](mailto:rlongo@globalcommercialprop.com)

## Join Marble & Home Improvement Row on Rogers Ave.



**Excellent Rogers Avenue Location**  
**+/- 12,000 SF Building**  
**1.01 Acres - Allows Excess Onsite Storage**  
**Current Marble & Stone Retail Showroom**  
**Immediate Rogers / Brokaw location**  
**Fenced Yard w/Onsite Parking**  
**33' Gated Driveway**  
**100' x 30' Slab Room Warehouse**  
**Clear Height 11'4"**  
**2 Roll Up Doors / No Dock / 10'2" Clearance**  
**400a/120 – 208 3phase 4wire**  
**Easy 880 / 101 Fwy Access**  
**Zoning: M4**  
**APN: 237-09-110**  
**Year Built: 1960's**  
**\$1.65 nnn psft / nets add .38 psft**  
**Available March 2025**

**FOR LEASE: Showroom / Industrial w/Yard - 12,000 SF**



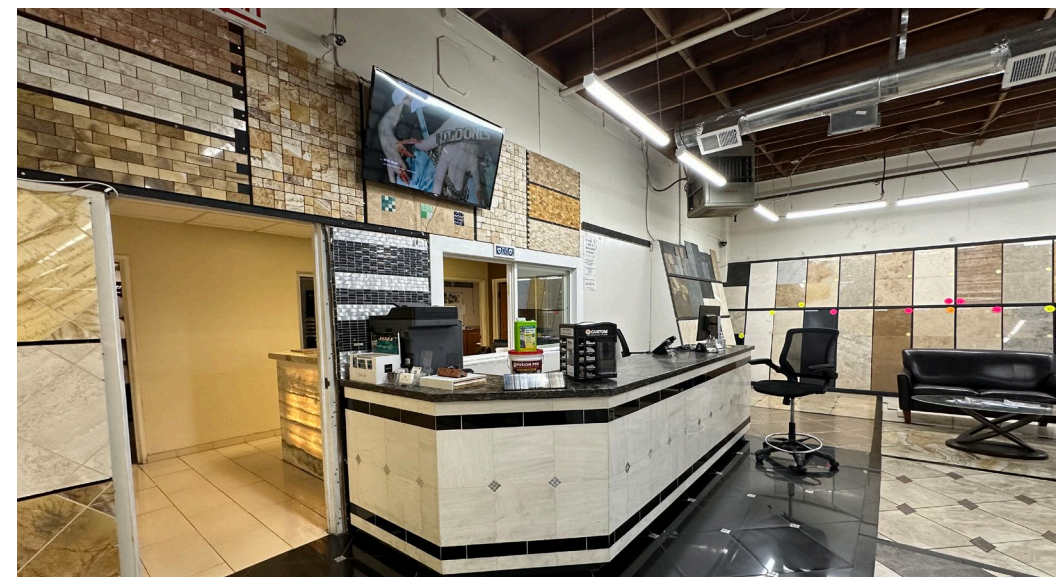
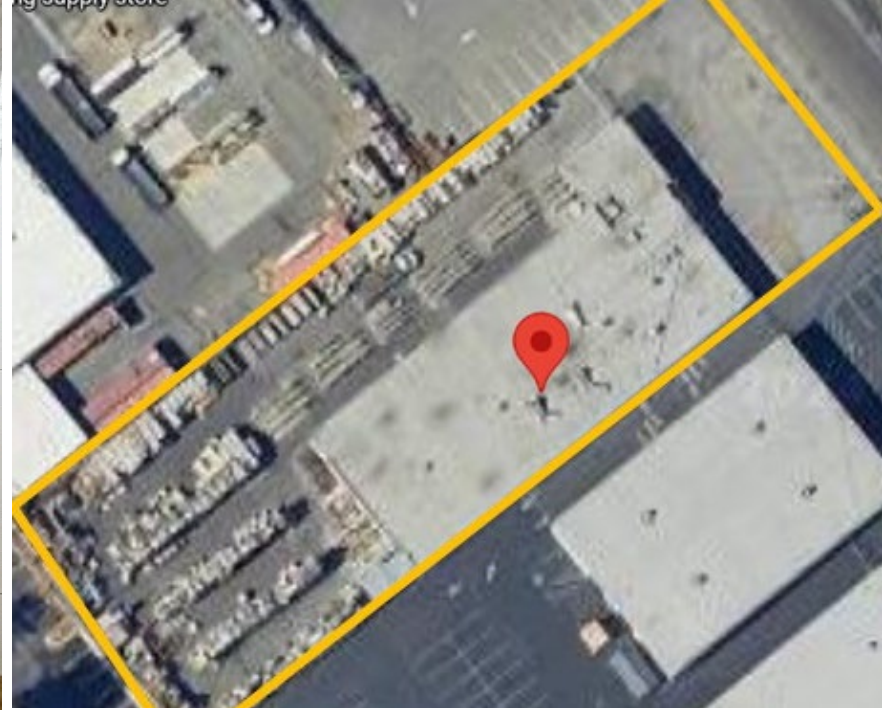
1785 Rogers Avenue, San Jose, CA

[www.GlobalCommercialProp.com](http://www.GlobalCommercialProp.com)

**Ralph Longo**  
**408-529-1362**

DRE# 01202211

[rlongo@globalcommercialprop.com](mailto:rlongo@globalcommercialprop.com)



**FOR LEASE: Showroom / Industrial w/Yard - 12,000 SF**



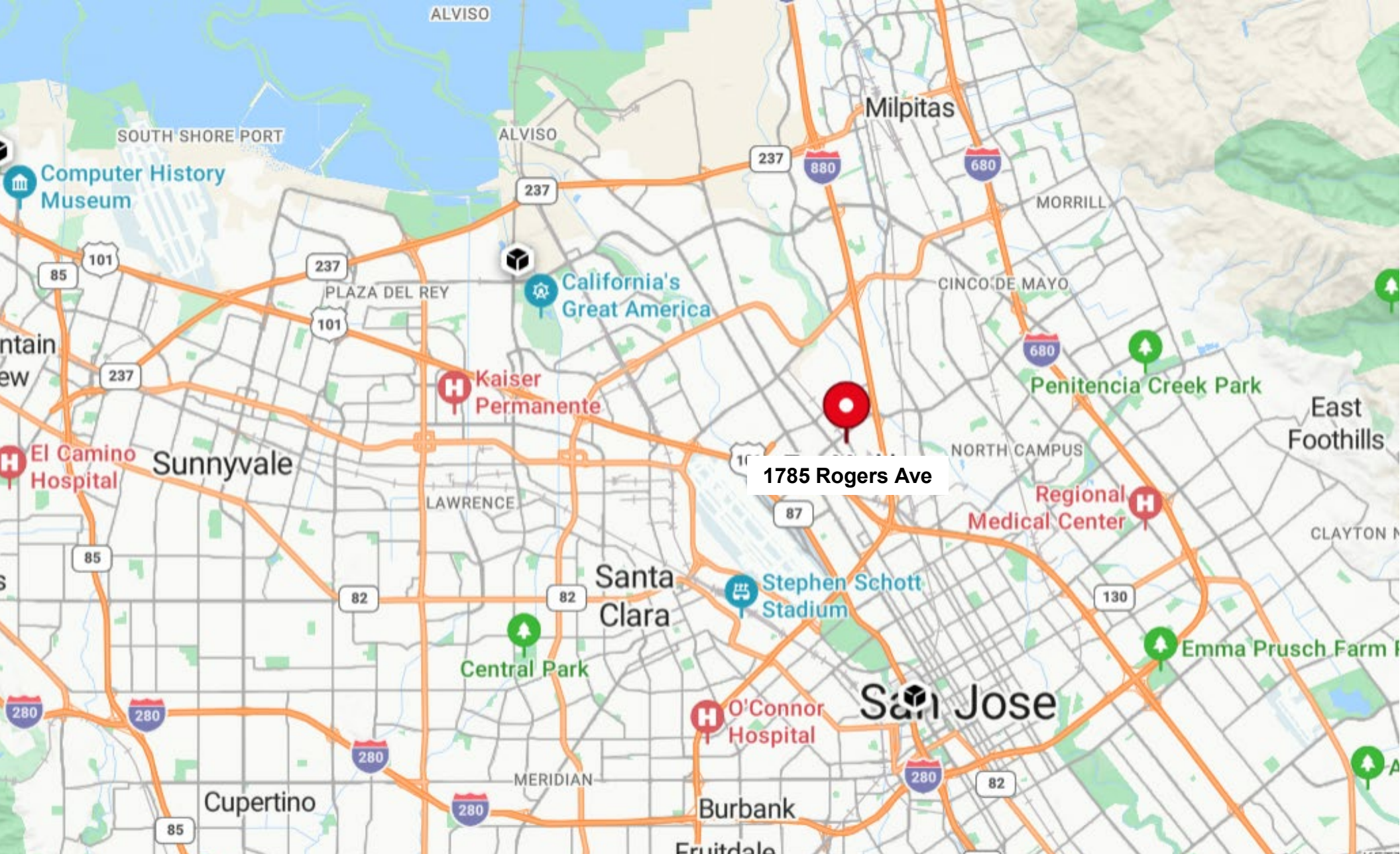
1785 Rogers Avenue, San Jose, CA

[www.GlobalCommercialProp.com](http://www.GlobalCommercialProp.com)

**Ralph Longo**  
**408-529-1362**

DRE# 01202211

[rlongo@globalcommercialprop.com](mailto:rlongo@globalcommercialprop.com)



**FOR LEASE: Showroom / Industrial w/Yard - 12,000 SF**



1785 Rogers Avenue, San Jose, CA

[www.GlobalCommercialProp.com](http://www.GlobalCommercialProp.com)

**Ralph Longo**  
**408-529-1362**

DRE# 01202211

[rlongo@globalcommercialprop.com](mailto:rlongo@globalcommercialprop.com)

# DISCLAIMER

---

The information contained in the following Marketing Brochure is proprietary and strictly confidential. It is intended to be reviewed only by the party receiving it from Global Commercial Properties, Inc. and should not be made available to any other person or entity without consent of Global Commercial Properties, Inc. This information has been prepared to provide summary and information to prospective purchasers, for the solicitation of interest and is not an offer to sell the property. Only a fully executed Real Estate Purchase Agreement shall bind the property.

The information provided herein is deemed to be accurate and to establish only a preliminary level of interest in the subject property. The information contained herein is not a substitute for thorough due diligence investigation. Global Commercial Properties, Inc. has not made any independent investigation, and makes no warranty or representation, with respect to the present or future use or zoning of the subject property, the future projected financial performance of the property, the size measurements or boundaries of the property and improvements, ADA-related issues or compliance, the presence or absence of contaminating or hazardous substances, PCB's or asbestos, the compliance with State, Federal, County or municipal law, nor the physical condition of the improvements thereon. The information contained in this Marketing Brochure has been obtained from sources believed to be reliable; however, Global Commercial Properties, Inc. has not verified, and will not verify, any of the information contained herein, nor has Global Commercial Properties, Inc. conducted any investigation regarding these matters and makes no warranty or representation whatsoever regarding the accuracy or completeness of the information provided. Prospective purchaser is advised and agrees to make its own investigation and determination regarding all matters affecting the value, condition, utility, size, compliance with Laws, and all aspects of the Property's desirability and suitability for Purchasers intentions.

The information contained herein is subject to change without notice and the recipient of these materials shall not look to the Owner or the Broker, Global Commercial Properties, Inc., or any of their officers, employees, representatives, independent contractors or affiliates, for the accuracy or completeness thereof.

Property will be shown by appointment only. Please do not disturb occupants of the property.



[www.GlobalCommercialProp.com](http://www.GlobalCommercialProp.com)

**Ralph Longo**

**408-529-1362**

DRE# 01202211

[rlongo@globalcommercialprop.com](mailto:rlongo@globalcommercialprop.com)