

**1804 NW 52nd St.
Lawton, OK 73505**

DAYCARE FOR LEASE



OFFERING SUMMARY

Available SF: 5,056 SF

Lease Rate: \$3,500.00 per month (NN)

Year Built: 1980

Building Size: 5,056 SF

PROPERTY OVERVIEW

±5,056 sf daycare for lease on NW 52nd St. in Lawton, OK. This childcare facility consists of 6 large rooms with plumbing in each room, and 3 restrooms. One of the restrooms has 3 small toilets. Large open kitchen area with walk-in refrigerator/ freezer and restaurant-style island for prepping. Each classroom has it's own playground, and playground areas are fully fenced. Nearby businesses include Atwoods, McMahon Tomlinson Nursing & Rehabilitation Center, Bridges and Buckner Dentistry, Urban Air Trampoline Park

PROPERTY HIGHLIGHTS

- Great signage visibility
- Separate office for management

MELISSA BUSSE

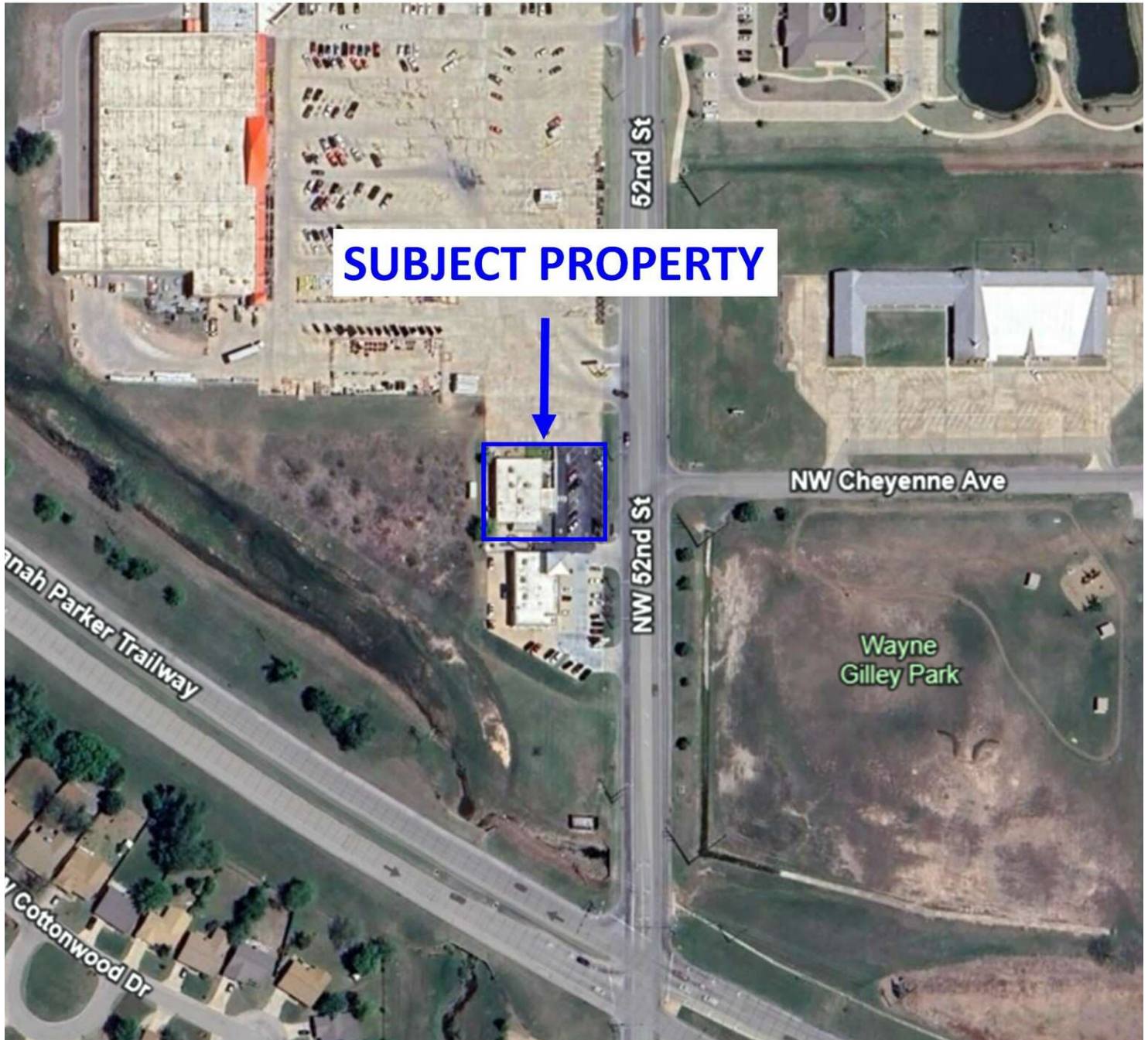
580.353.6100

mbusse@insightbrokers.com

Measurements and other information are obtained from Owner and/or other reliable sources and are offered as an aid for investment analysis. Although deemed reliable, information is not guaranteed and is provided subject to errors, omissions, prior sale or withdrawal.

**1804 NW 52nd St.
Lawton, OK 73505**

DAYCARE FOR LEASE



MELISSA BUSSE

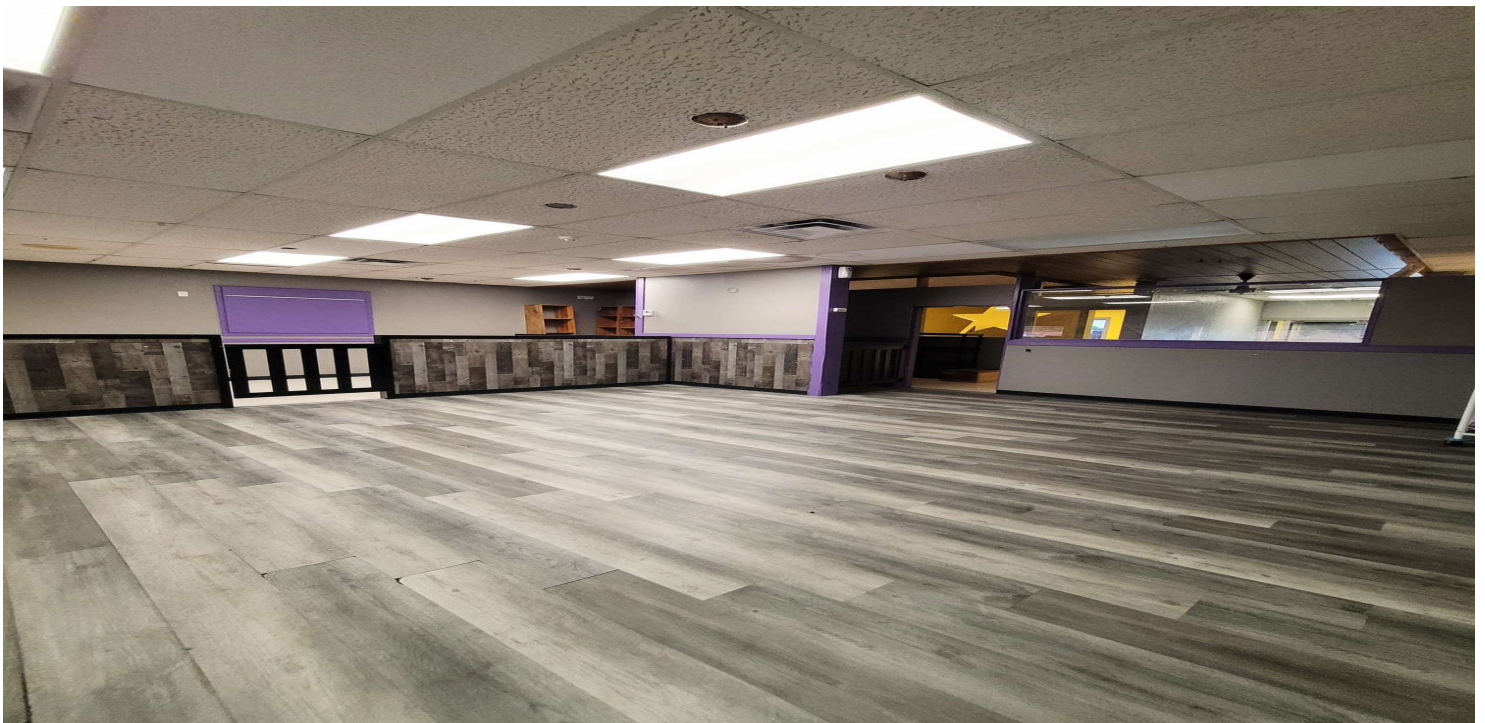
580.353.6100

mbusse@insightbrokers.com

Insight Commercial Real Estate Brokerage, LLC

**1804 NW 52nd St.
Lawton, OK 73505**

DAYCARE FOR LEASE

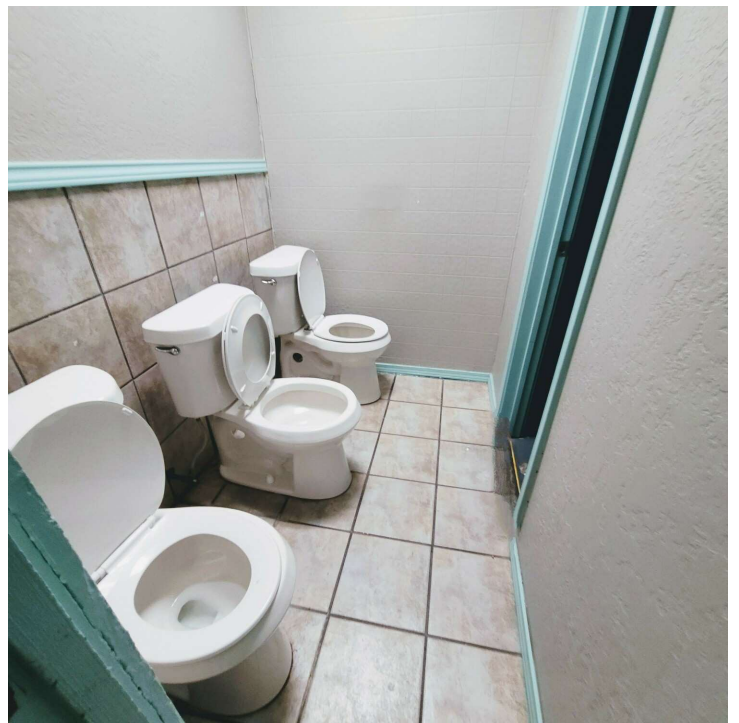


MELISSA BUSSE

580.353.6100
mbusse@insightbrokers.com

**1804 NW 52nd St.
Lawton, OK 73505**

DAYCARE FOR LEASE

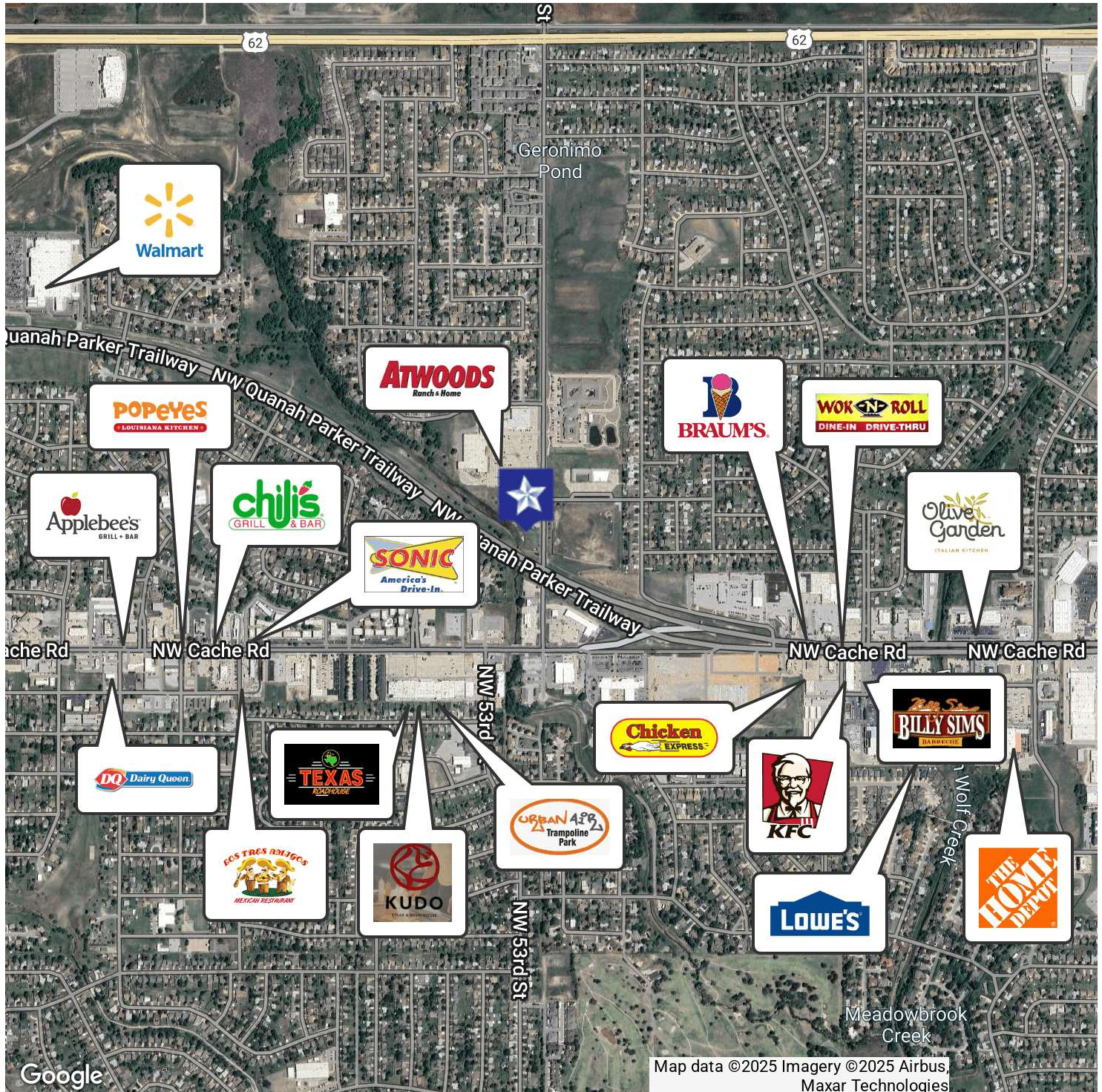


MELISSA BUSSE

580.353.6100
mbusse@insightbrokers.com

1804 NW 52nd St.
Lawton, OK 73505

DAYCARE FOR LEASE

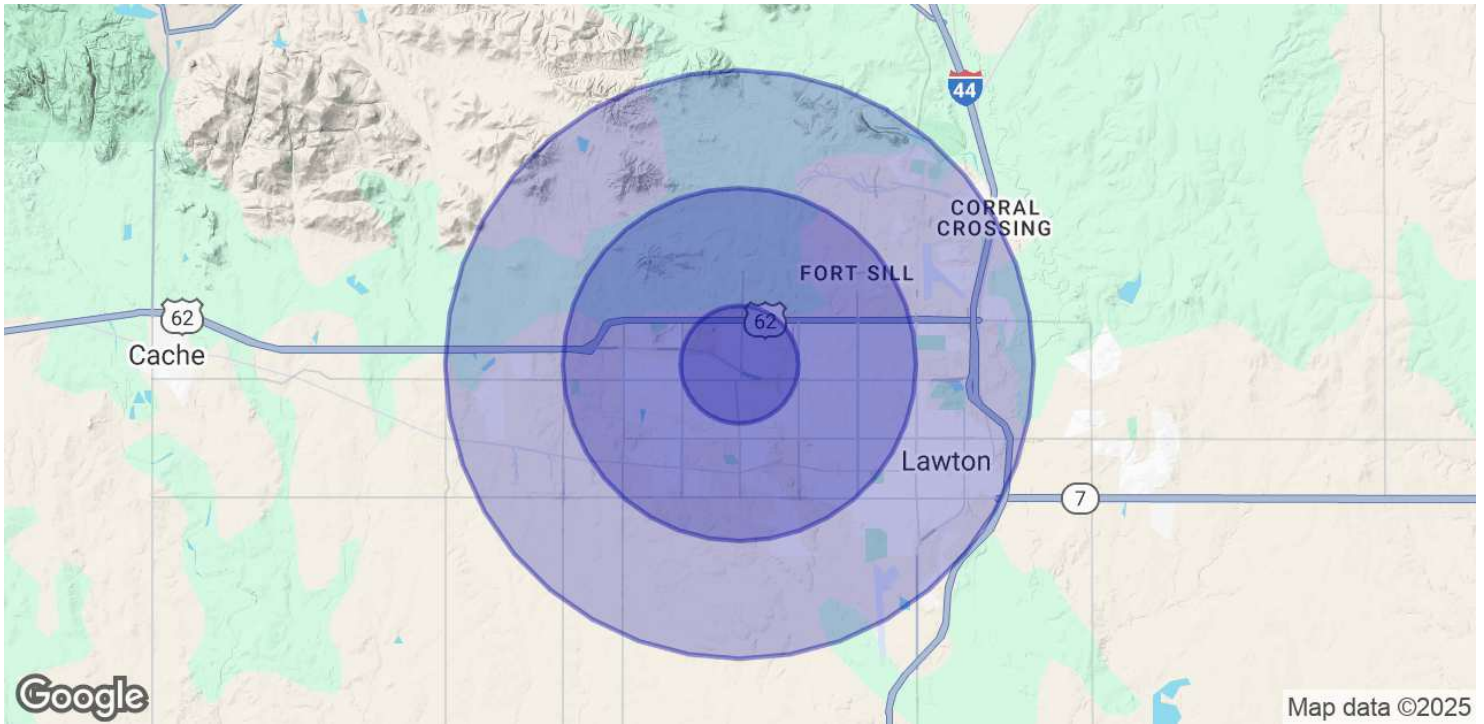


MELISSA BUSSE

580.353.6100
mbusse@insightbrokers.com

**1804 NW 52nd St.
Lawton, OK 73505**

DAYCARE FOR LEASE



POPULATION	1 MILE	3 MILES	5 MILES
Total Population	12,268	50,004	83,769
Average Age	28.8	31.7	32.0
Average Age (Male)	27.8	31.6	32.0
Average Age (Female)	31.2	32.5	32.3

HOUSEHOLDS & INCOME	1 MILE	3 MILES	5 MILES
Total Households	4,762	20,031	33,746
# of Persons per HH	2.6	2.5	2.5
Average HH Income	\$48,803	\$52,661	\$49,893
Average House Value	\$110,229	\$124,733	\$125,579

2020 American Community Survey (ACS)

MELISSA BUSSE

580.353.6100
mbusse@insightbrokers.com