



3,102 – 15,800 RSF AVAILABLE

# PREMIER TECH CENTER

2810 N. PARHAM ROAD | RICHMOND, VA



CUSHMAN &  
WAKEFIELD

THALHIMER



# PROPERTY HIGHLIGHTS



## AVAILABLE SUITES

### FLOOR 2

- Suite 242 – 5,357 RSF

### FLOOR 3\*

- Suite 305 – 5,584 RSF
- Suite 318 – 8,931 RSF
- Suite 320 – 3,767 RSF
- Suite 325 – 3,102 RSF
- Suite 335 – 4,891 RSF

*\*suites 318, 320, & 325 can be combined for 15,800 RSF*



## PROPERTY FEATURES

- 0.5 mi to I-64
- On-Site EV charging
- Storage available
- Full building generator backup



## AMENITIES

- Common conference facility
- Tenant lounge
- On site café



## PARKING

- 4.5 parking spaces per 1,000
- Including covered parking area



## LOCATION

- Immediate access to I-64



## SIGNAGE

- Monument signage available
- Eyebrow signage available

# FLOORPLANS & AVAILABILITIES

## SECOND FLOOR FLOORPLAN

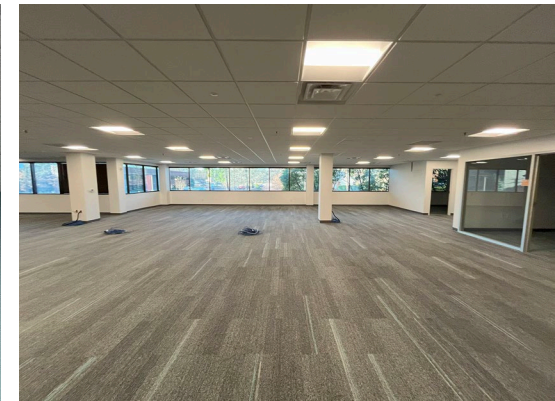
*SUITE 242 - 5,357 RSF*





SUITE 242  
5,357 SF

FEATURED  
AVAILABILITY





# FLOORPLANS & AVAILABILITIES

## THIRD FLOOR FLOORPLAN

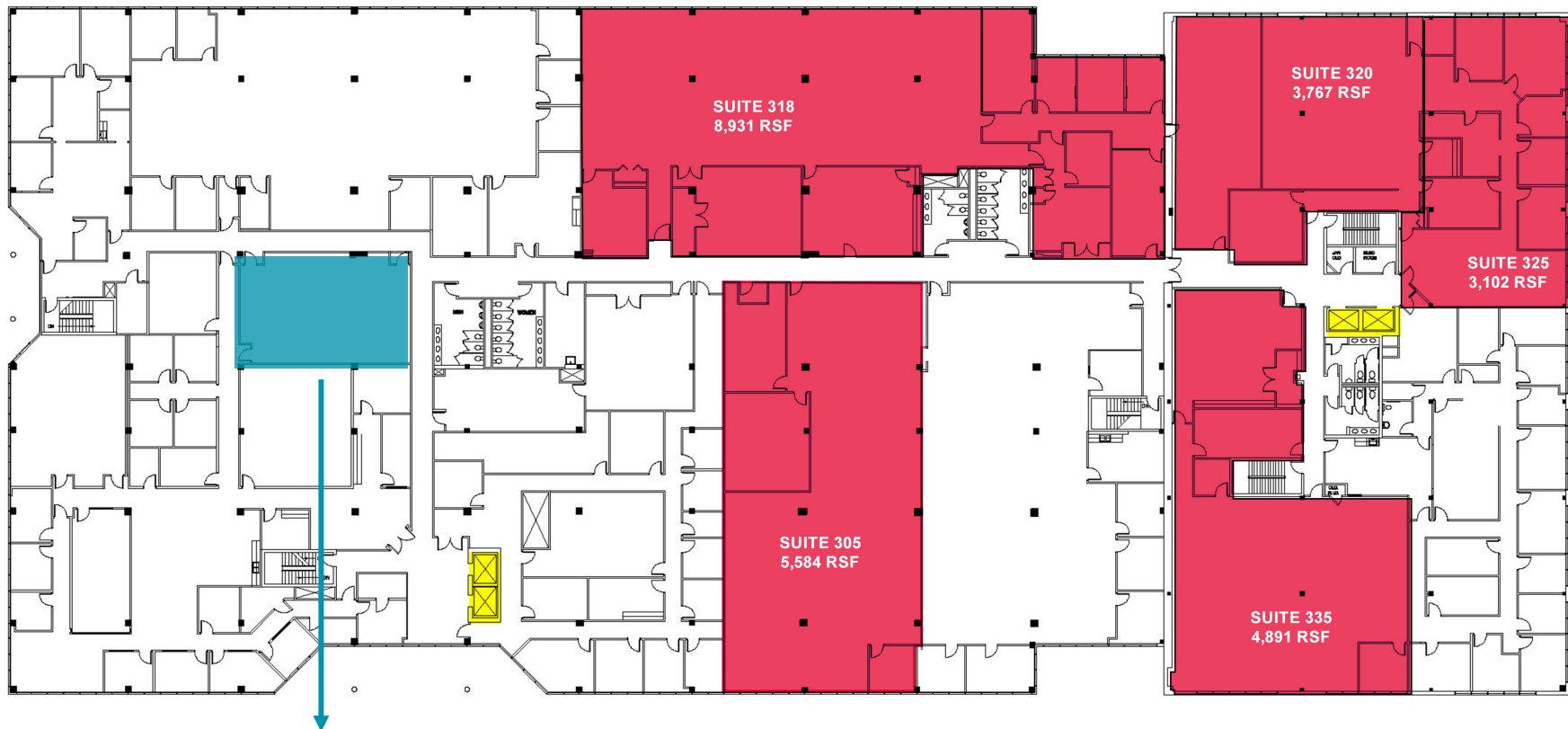
*Suite 305 - 5,584 RSF*

*Suite 318 - 8,931 RSF* \* suites 318, 320, & 325 can be combined for 15,800 RSF

*Suite 320 - 3,767 RSF*

*Suite 325 - 3,102 RSF*

*Suite 335 - 4,891 RSF*



Furnished Building  
Conference / Training Room



# PROPERTY PHOTOS



CONFERENCE ROOM AMENITY



BRIGHT AND WELCOMING LOBBIES



NEW TENANT LOUNGE





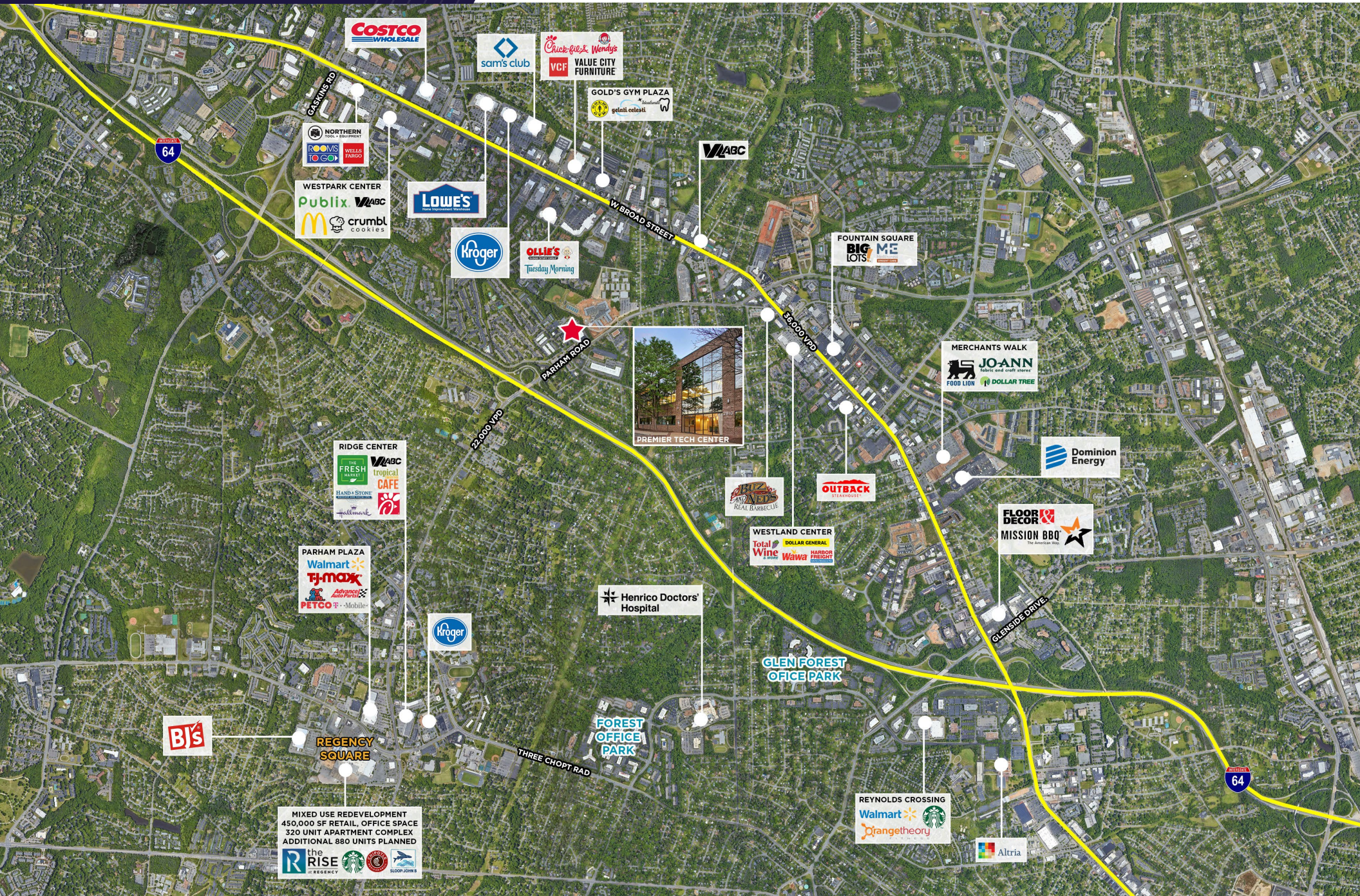


COVERED PARKING AVAILABLE

NEW TENANT LOUNGE



# MARKET AERIAL







## FOR MORE INFORMATION, CONTACT:

**AMY BRODERICK**  
Senior Vice President  
804 344 7189  
[amy.broderick@thalhimer.com](mailto:amy.broderick@thalhimer.com)

**KATE HOSKO**  
Vice President  
804 344 7169  
[kate.hosko@thalhimer.com](mailto:kate.hosko@thalhimer.com)

Thalhimer Center  
11100 W. Broad Street  
Glen Allen, VA 23060  
[thalhimer.com](http://thalhimer.com)

Independently Owned and Operated / A Member of the Cushman & Wakefield Alliance

Cushman & Wakefield | Thalhimer © 2025. No warranty or representation, express or implied, is made to the accuracy or completeness of the information contained herein, and same is submitted subject to errors, omissions, change of price, rental or other conditions, withdrawal without notice, and to any special listing conditions imposed by the property owner(s). As applicable, we make no representation as to the condition of the property (or properties) in question.



**CUSHMAN &  
WAKEFIELD**

**THALHIMER**