



Moses Tucker
PARTNERS

Little Rock (HEADQUARTERS)
200 River Market Ave, Suite 300
Little Rock, AR 72201
501.376.6555

Bentonville (BRANCH)
805 S Walton Blvd, Suite 123
Bentonville, AR 72712
479.271.6118

OFFICE/RETAIL SPACE FOR LEASE

805 S Walton Blvd, Bentonville, AR



CONTACT US TODAY
479.271.6118 | mosestucker.com



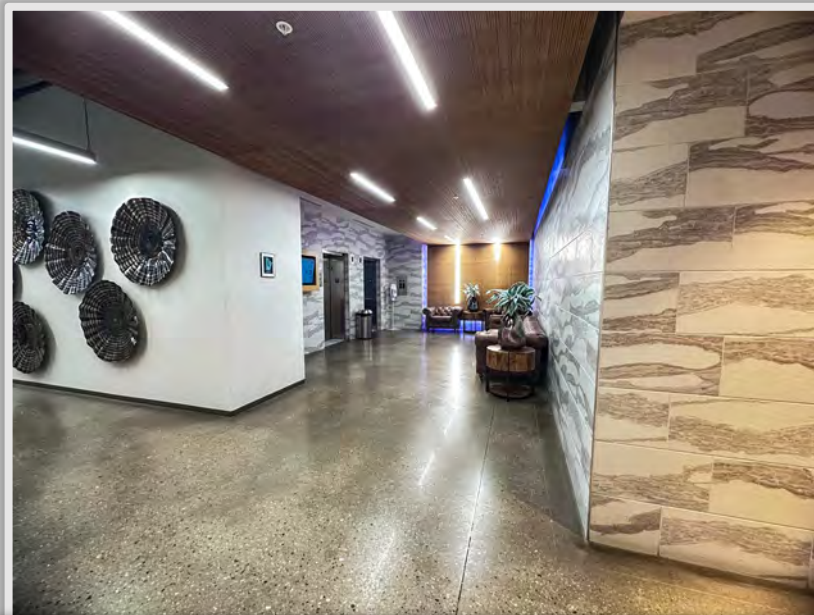
Property Understanding

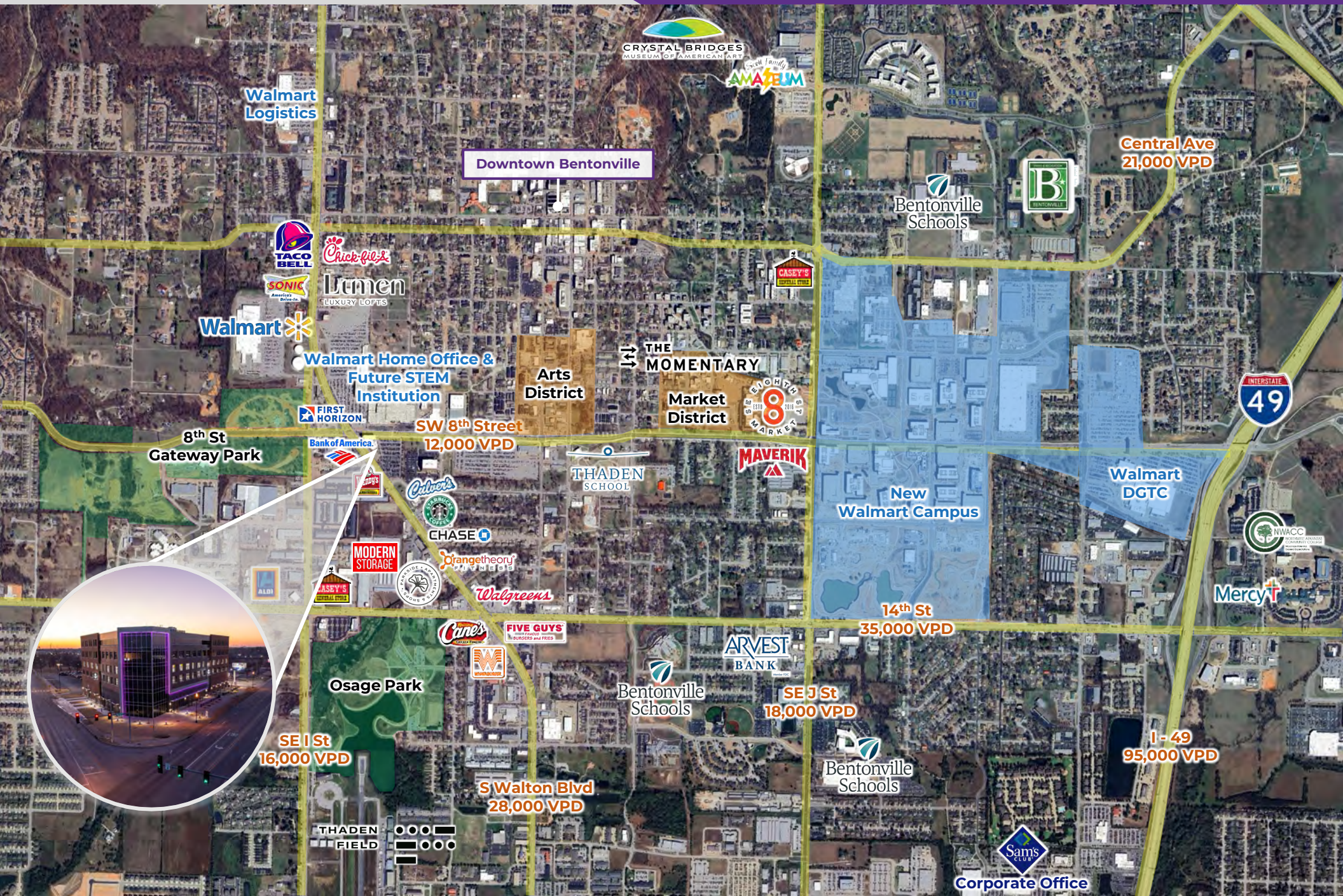
OVERVIEW

Offering	For Lease
Lease Rate & Type	\$35.00/SF Full Service
Address	805 S Walton Blvd
City/State	Bentonville, AR 72712
Property Type	Office/Retail
Space Available	<ul style="list-style-type: none"> 1st Floor Shell Space – ±2,306 RSF (Retail/Office) 5th Floor Shell Space – ±3,780 RSF (Office) Suite 520 – ±3,029 RSF (2nd Generation Office)
TI Allowance	\$55.00/SF (Shell space only)
Traffic Count	<ul style="list-style-type: none"> S Walton Blvd – 28,000 VPD SW 8th St – 12,000 VPD

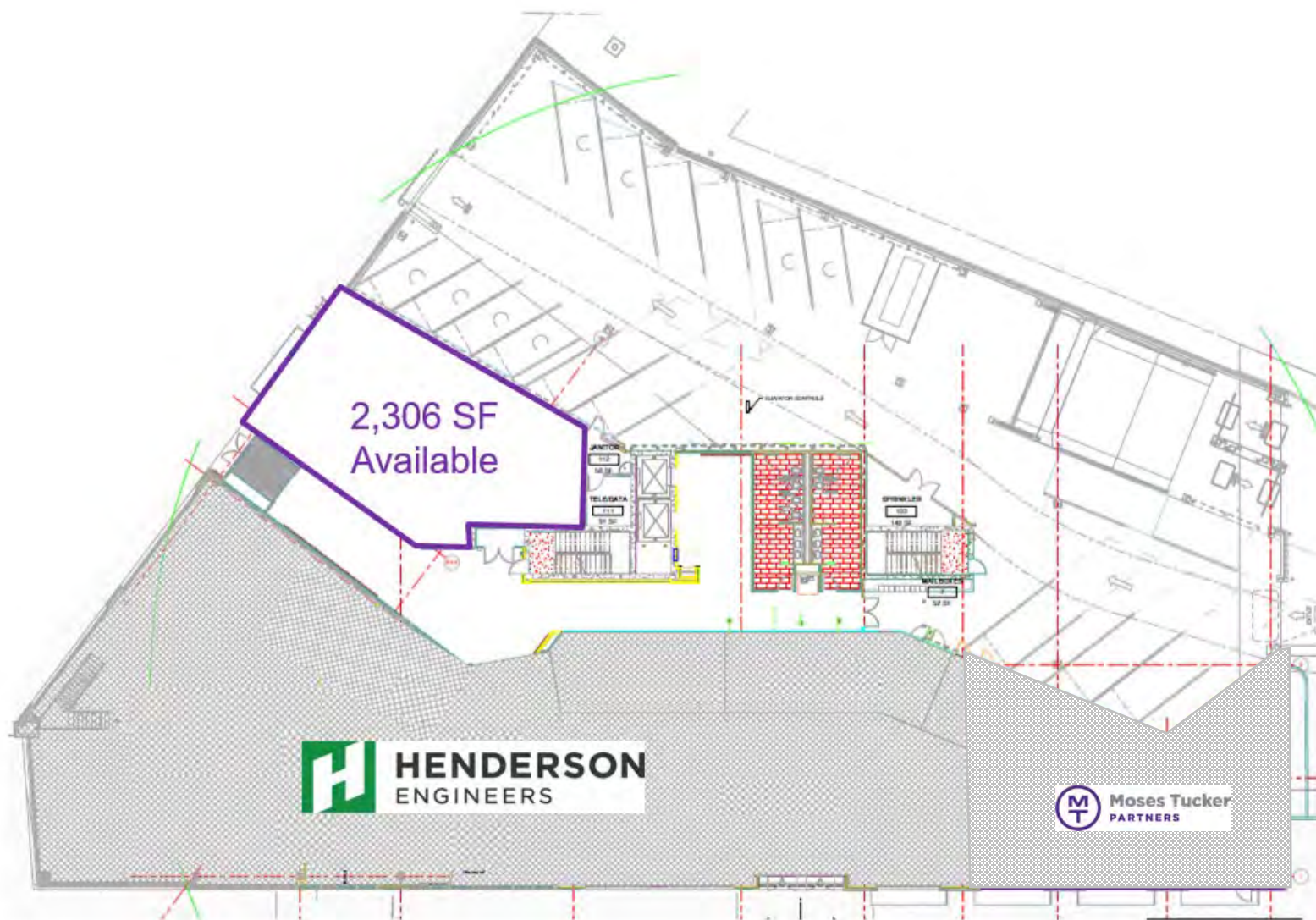
PROPERTY HIGHLIGHTS

- Located on the signalized corner of S Walton Blvd (28,000 VPD) and SW 8th Street (12,000 VPD)
- Class A office building with covered parking garage
- Across from Walmart Home Office which will be the future location of a new STEM education institution for the next generation of innovators, builders, and entrepreneurs
- Within walking distance to Osage Park and the new 100-acre 8th Street Gateway Park
- Numerous national retailers in the immediate area, such as Walgreens, Walmart, McDonald's, Chick-fil-A, Panda Express, Starbucks, Culver's, Wendy's, Raising Cane's, Whataburger, and Five Guys Burgers and Fries, among others

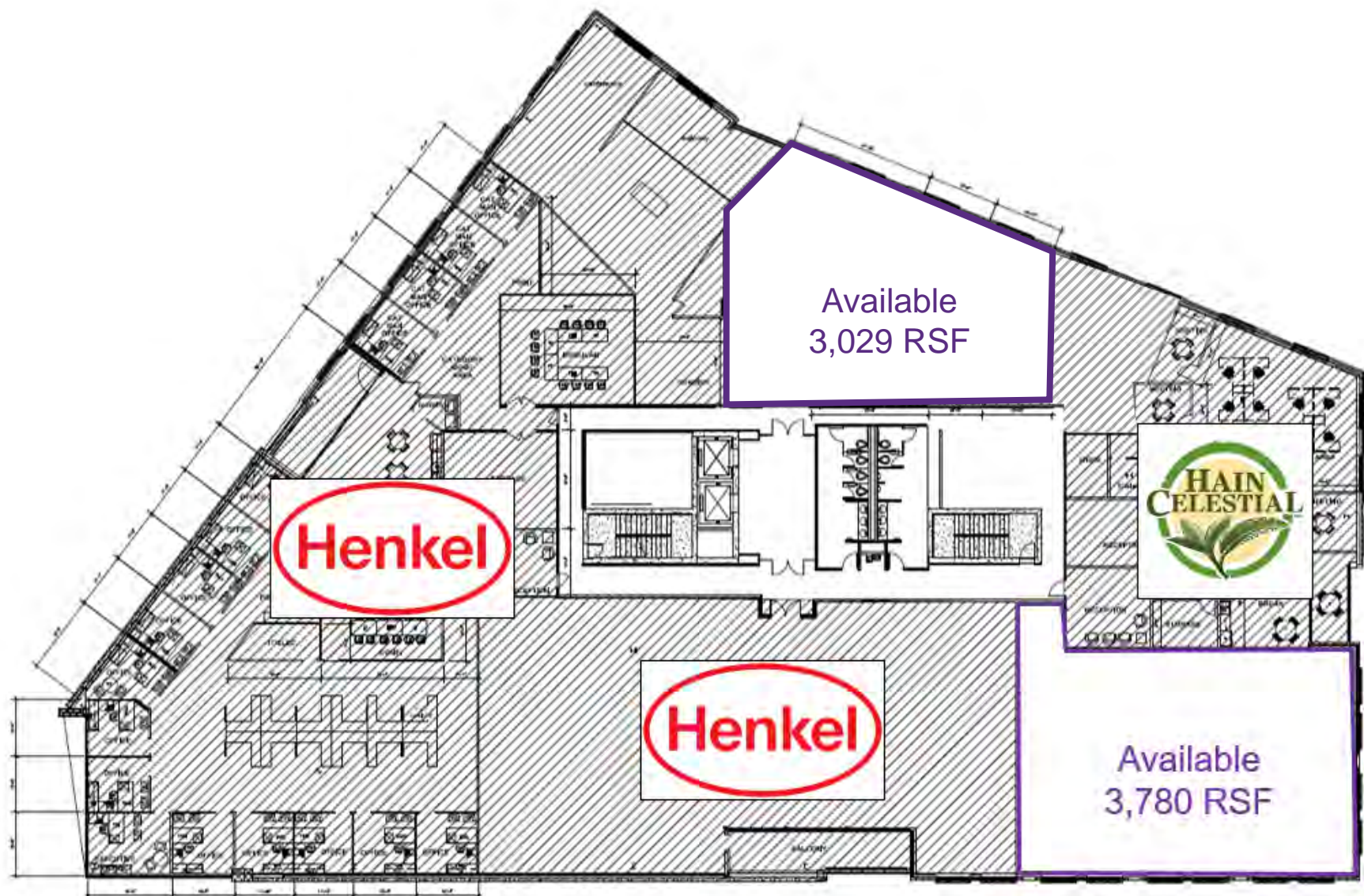




1st Floor



5th Floor



Osage Park

Osage Park is a vibrant urban destination where nature and recreation come together. Stroll the floating boardwalks through the park's wetland ecosystem, let your pup run free at the expansive dog park, enjoy a match at the 8-court pickleball complex, or experience one-of-a-kind programming at The Quiver Archery Range.

The mission was to provide a unique urban park that blends natural beauty, outdoor adventure, and inspiring spaces that take flight. The park strives to connect the community with the Ozark wetlands, outdoor recreation, and the spirit of flight.



8th Street Gateway Park

8th Street Gateway Park is a nearly 100-acre urban park in Bentonville, designed to blend outdoor recreation with ecological restoration. The park will feature beginner-friendly mountain bike trails, a world-class skatepark, nature-inspired playgrounds, a great lawn, and event plazas, while also restoring wetlands, meadows, and woodlands. Serving as a western anchor for the city's trail network, it will connect to Coler Preserve, Osage Park, and beyond with more than 12 miles of paths. Construction is underway with an expected opening in late 2026, positioning the park as Bentonville's version of a "Central Park."



Bentonville, AR



Bentonville is located in one of the fastest-growing regions in the country, Northwest Arkansas. In the past 20 years, Bentonville has transformed itself from a sleepy small Arkansas town to a bustling center of commerce and innovative entrepreneurialism, making it a community of choice in Northwest Arkansas.

Situated in Bentonville is the corporate headquarters of Walmart, the largest retailer in the world. With Walmart's prominence in the city, Bentonville is also an international focal point for retail suppliers and other supporting businesses.


Becoming a must-visit cycling and arts destination, Bentonville has been named the Mountain Biking Capital of the World. Visitors and residents alike can enjoy exploring the vast trail network from the downtown square. Bentonville is also home to the esteemed Crystal Bridges Museum of American Art, The Momentary, and The Amazeum.

DEMOGRAPHICS*

	3 MILES	5 MILES	10 MILES
Population	59,664	115,397	248,261
Households	22,843	44,194	104,834
Average Age	34.7	35.3	37.1
Average Household Income	\$137,131	\$135,146	\$129,236
Businesses	2,233	3,760	6,343

**Demographic details based on property location*

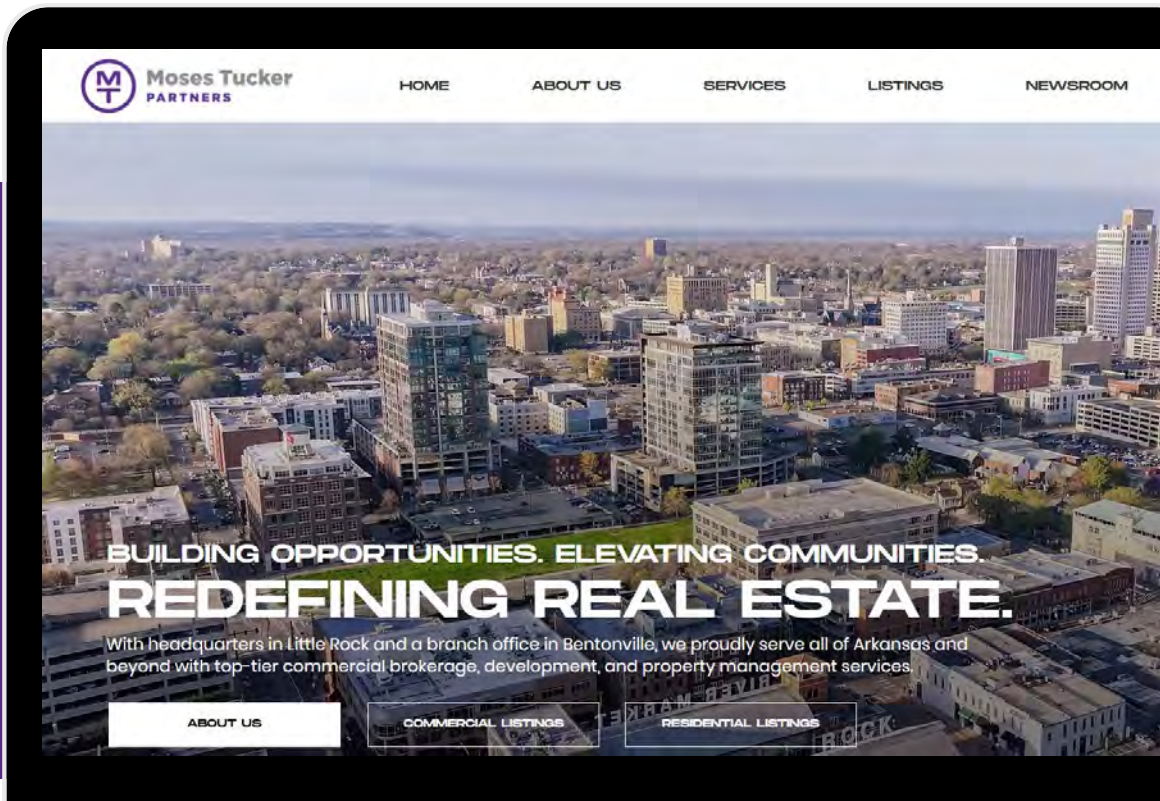
CONNECT

 (479) 271-6118

 www.mosestucker.com

 info@mosestucker.com

 805 S Walton Blvd, Suite 123,
Bentonville, AR 72712



Paul Esterer
Principal & NWA Market President
479.685.6612
pesterer@mosestucker.com

Ed Belto
Brokerage Director
479.659.1260
ebelto@mosestucker.com

Jeff Snyder, CCIM
Brokerage Director
479.372.0001
jsnyder@mosestucker.com

DISCLAIMER

Moses Tucker Partners represents the owner of the property represented herein. Although all information furnished regarding property for sale, rental, or financing is from sources deemed reliable, such information has not been verified and no express representation is made nor is any to be implied as to the accuracy thereof and it is submitted subject to errors, omissions, change of price, rental or other conditions, prior sale, lease or financing, or withdrawal without notice and to any special conditions imposed by our principal.