



Warehouse Available for Sublease in Southeast Suburban Location

**8450 HIGHFIELD PARKWAY, SUITE 9-500 AND 9-600
ENGLEWOOD, CO 80112**

Space Available

43,577 SF

Office Finish

1,126 SF

Lease Rate

Contact Broker

Term

Through July 31st, 2027

Loading

5 Dock high (3 levelers)
1 Drive-in

Clear Height

24'

Parking

1.63: 1,000 SF

Opportunity Highlights

- Newer and high image, class A construction in Highfield Business Park
- Excellent Access to I-25 via E-470
- 85' Truck Court
- ESFR Sprinkler System
- Racking available

For information, please contact:

Keith Bell

t 303-260-4332
keith.bell@nmrk.com

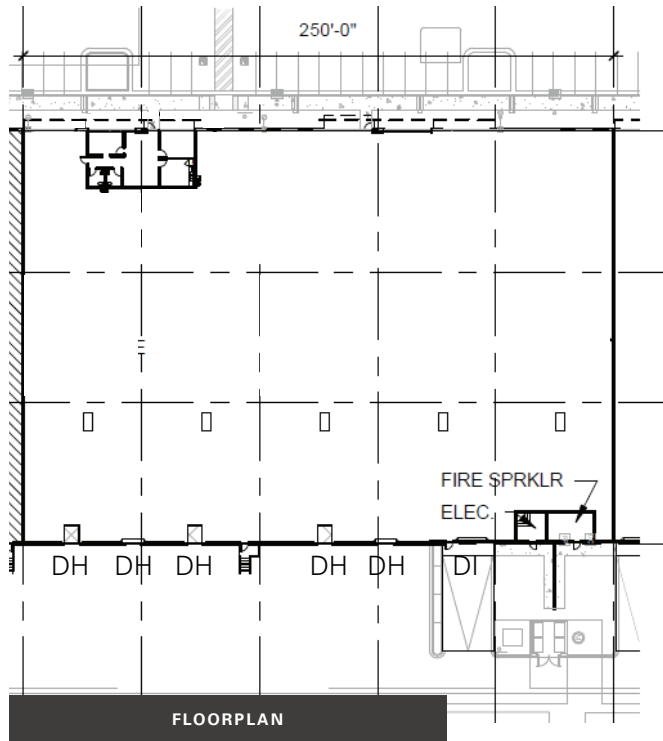
1800 Larimer Street,
Suite 1700,
Denver, CO 80202

nmrk.com

NEWMARK

The information contained herein has been obtained from sources deemed reliable but has not been verified and no guarantee, warranty or representation, either express or implied, is made with respect to such information. Terms of sale or lease and availability are subject to change or withdrawal without notice.

8450 HIGHFIELD PARKWAY, SUITE 9-500 AND 9-600, ENGLEWOOD, CO 80112



Space Available

43,577 SF

Office Finish

1,126 SF

Lease Rate

Contact Broker

Term

Through July 31st, 2027

Loading

5 Dock-high (3 levelers)

1 Drive-in

Clear Height

24'

Parking

1.63: 1,000 SF

