

DERWOOD BUSINESS CENTER
15958-15960
DERWOOD
ROAD
ROCKVILLE, MARYLAND

AVAILABLE NOW

1,550-3,100 SF OFFICE SPACE

ABOUT THE PROPERTY

Located just off Redland Rd across from Shady Grove Metro, and minutes away from I-270, I-370 and MD-200 (ICC), Derwood Business Center is perfectly located for contractors, storage, smaller office users and like businesses in need of easy access to the greater D.C. Metro.

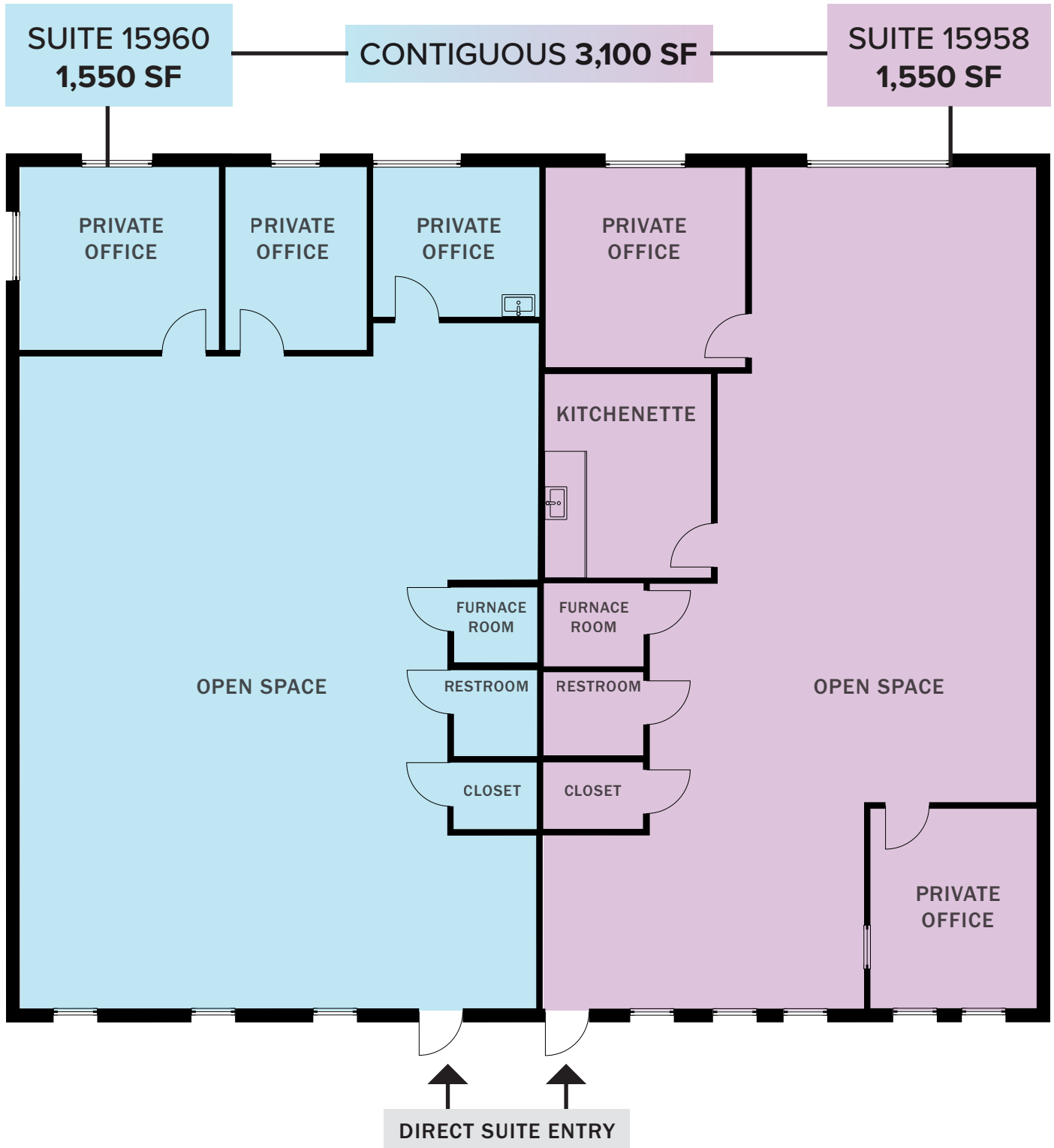
- Direct suite entry
- Two Adjacent Suites Available- Can Be Leased Together or Separately
- 4 Reserved Parking Spaces per Suite
- Easy access to Shady Grove Metro, I-270, and MD-200/ICC
- Kitchenette, private offices, conference, restroom

301-337-4700
www.scheerpartners.com

Scheer Partners
A Reputation for Results

FLOOR PLAN

Two Adjacent Suites Available • Can Be Leased Together or Separately



SUITE 15958



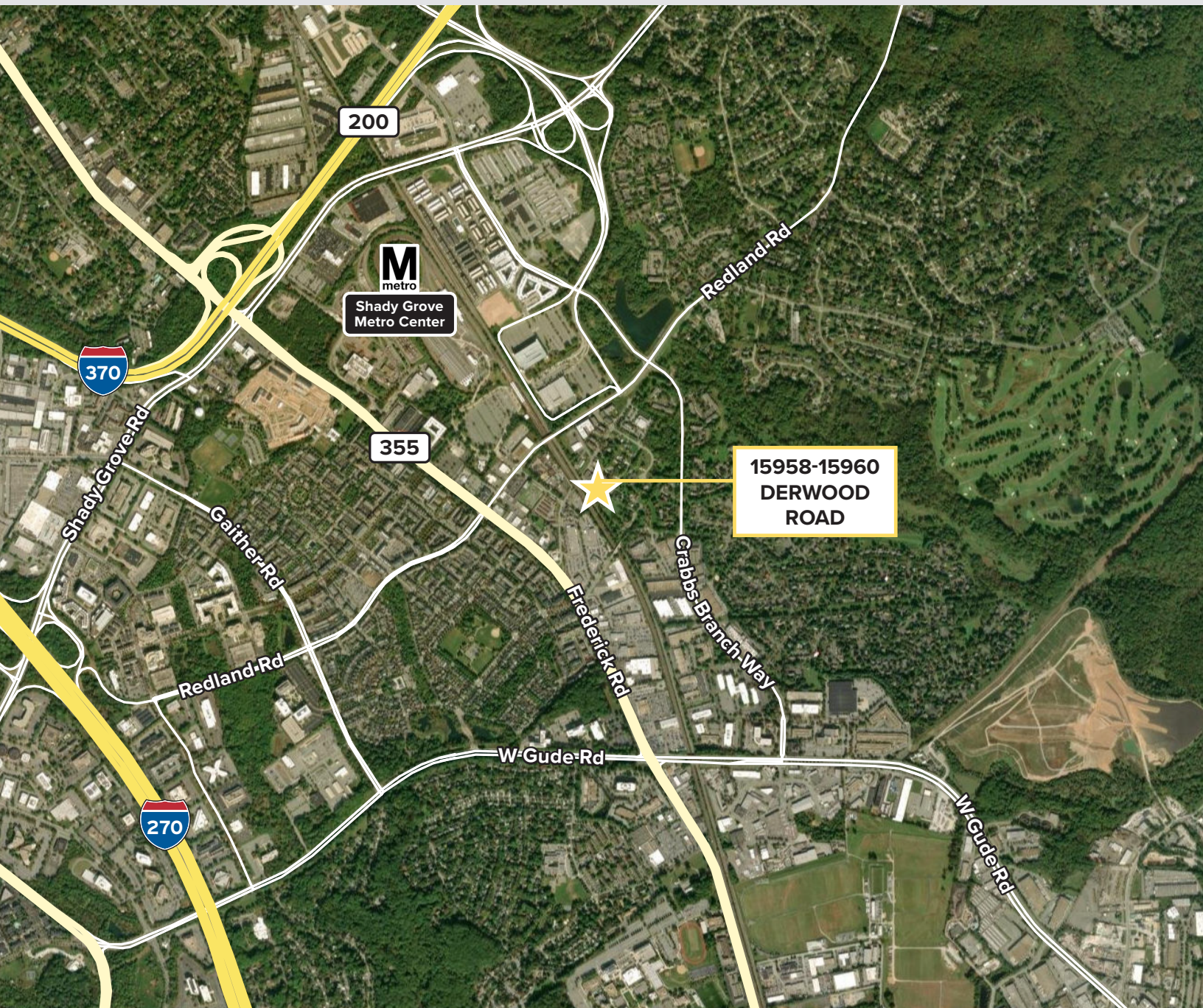
BUILDING EXTERIOR



4 RESERVED PARKING SPOTS PER SUITE

AREA MAP

Easy access to Shady Grove Metro, I-270, & MD-200/ICC



For Leasing Information, Please Contact:

Andrew Borsa

Senior Associate

240.315.3103

aborsa@scheerpartners.com

301.337.4700

www.scheerpartners.com

15245 Shady Grove Rd, Suite 210 North, Rockville, MD 20850

Scheer Partners
A Reputation for Results