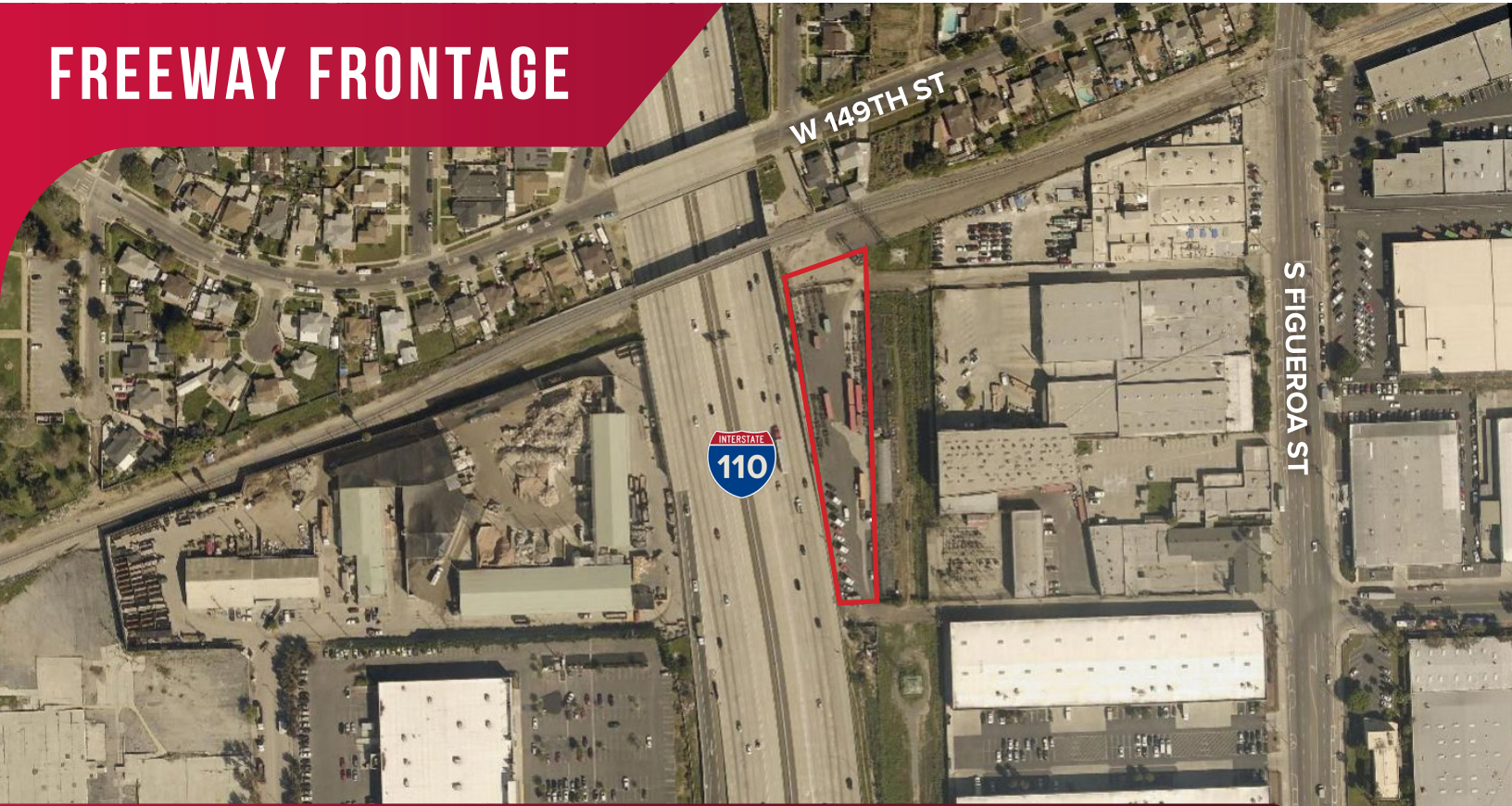


FOR LEASE

±46,838 SF OF LAND

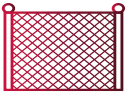
FREEWAY FRONTAGE



555 W 152ND ST | GARDENIA | CA 90248



Paved, Fenced, Camera Secured Yard



Two Entrances w/ Motorized Gates



LA City M2 Zoning



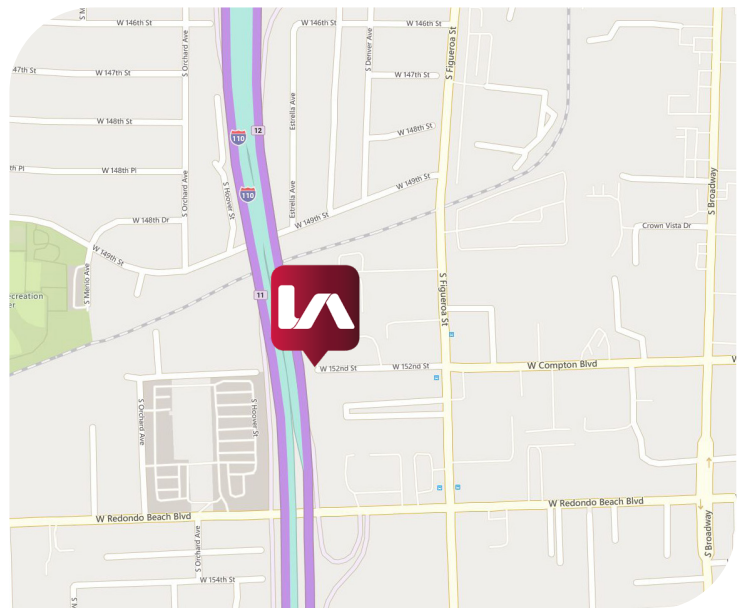
Great Access to Port



10' Iron Fence



Mobile Office Trailer



MILES SOLOMON
 Senior Vice President & Land Specialist | LIC ID 02099423
 msolomon@lee-associates.com
 949.532.8609

MASON LAWRENCE
 LIC ID 02213856
 mlawrence@lee-associates.com
 949.338.9567

JACK R. CLINE, JR.
 President | LIC ID 03854279
 jccline@lee-associates.com
 213.590.3512

TEAM-CLINE.COM



Lee & Associates® Los Angeles, Inc. | CORP ID 02174865
 1201 North Main Street Los Angeles, CA 90012