



FOR LEASE

OFFERED BY:

MILLENNIUM COMMERCIAL GROUP 402-505-7150

MILLENNIUM PLAZA

15858 W DODGE RD | OMAHA, NE 68118



BUILDING LOCATION



LEASING INFORMATION

CLASS A OFFICE SPACE

TOTAL BUILDING SQUARE FOOTAGE: 50,600

AVAILABLE: 16,000 CONTIGUOUS

FINISHED SPACES: MOVE -IN READY

MAIN LEVEL: 6,000 SQ FT

2ND LEVEL: 4,000 TO 8,000 SQ FT

PRICE: \$21.00 SQ FT

NNN: \$11.33 SQ FT

PARKING: INDOOR AND SURFACE





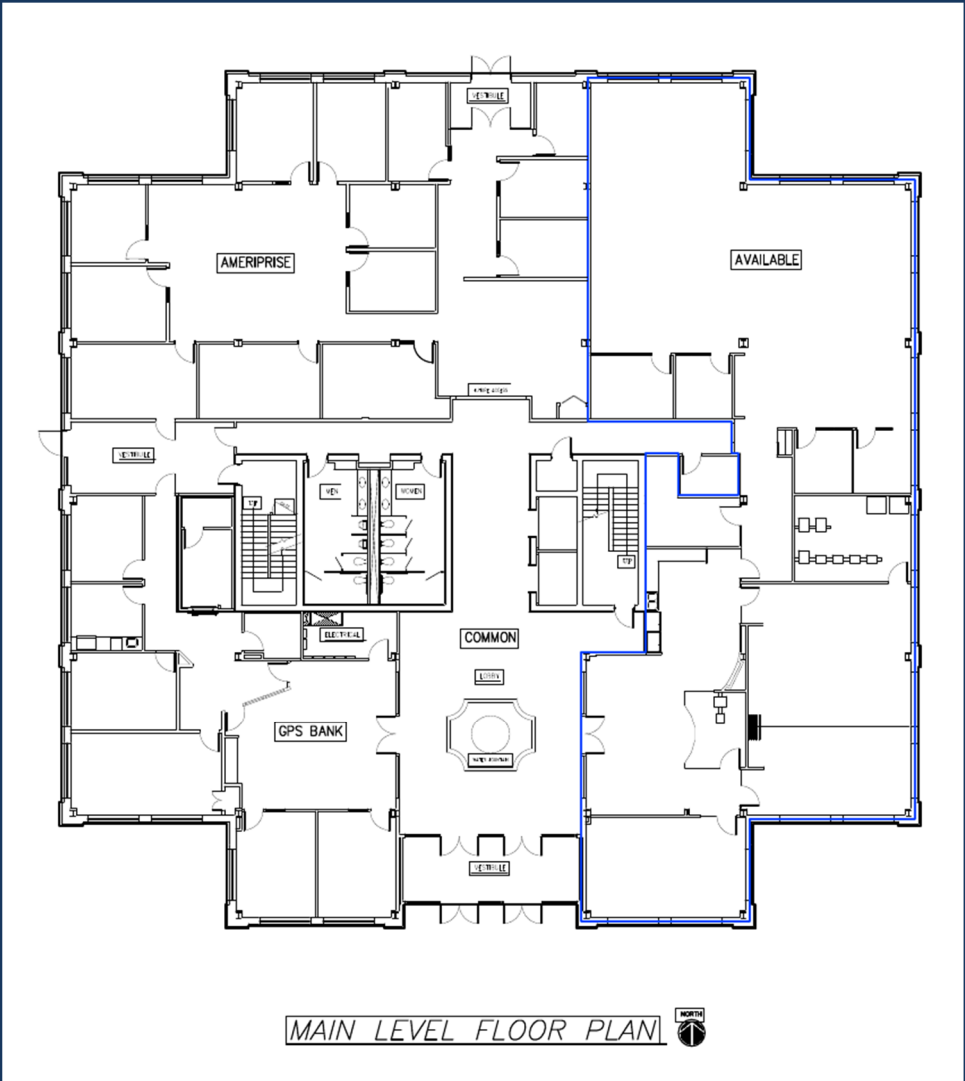
MAIN LEVEL GALLERY





MAIN LEVEL FLOOR PLAN

6,000 SQ FT AVAILABLE | \$21.00 SQ FT



MAIN LEVEL FLOOR PLAN 

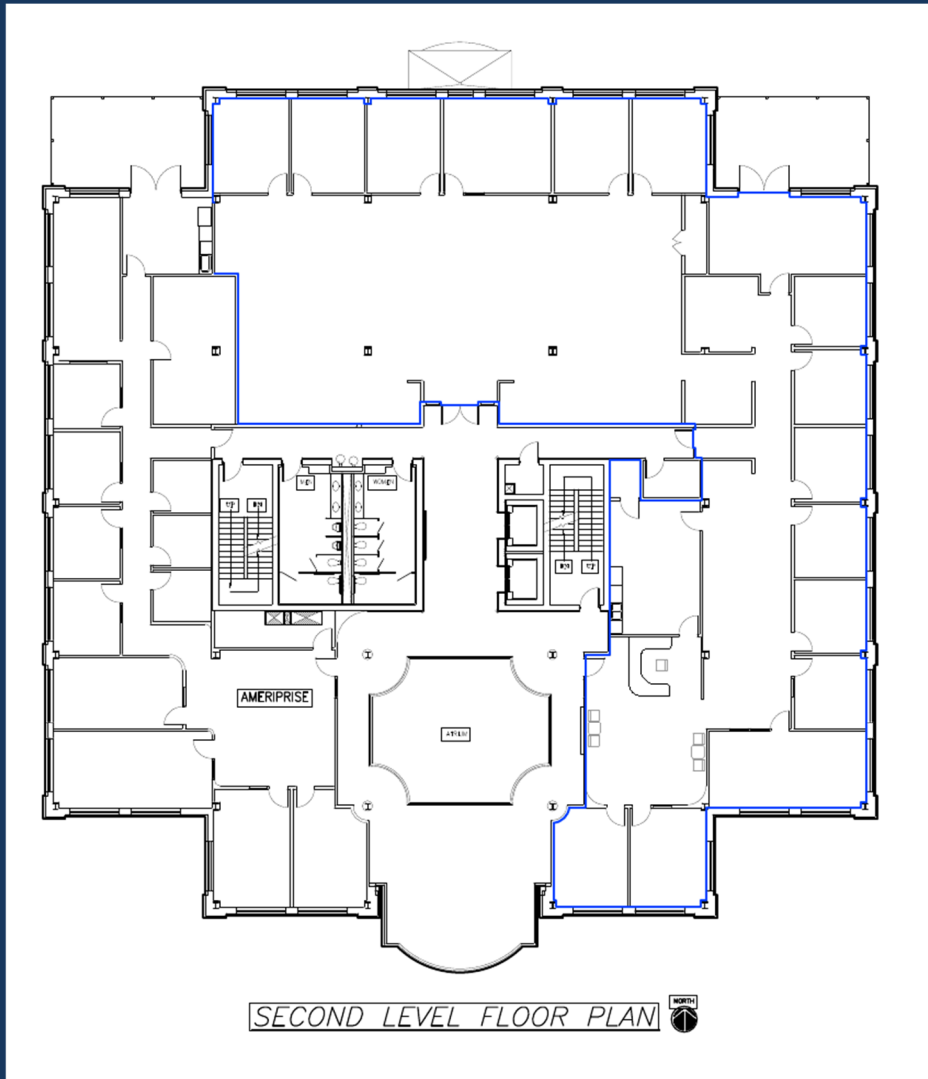


TENANT LOUNGE AREA



2ND LEVEL GALLERY





4,000 TO 8,000 SQ FT AVAILABLE

\$21.00 SQ FT

2ND LEVEL FLOOR PLAN

3RD LEVEL GALLERY



BOARD
ROOM IS
AVAILABLE
TO ALL
TENANTS

