

**PRELIMINARY PLAT OF
MINOT PRAIRIE INDUSTRIAL PARK 2ND ADDITION**

TO THE CITY OF MINOT, NORTH DAKOTA
BEING LOT 3, BLOCK 1, LOTS 1-4, BLOCK 2, LOTS 1-5, BLOCK 3, MINOT PRAIRIE INDUSTRIAL PARK & VACATED 75TH STREET SE,
5TH AVENUE SE & PORTION OF 4TH AVENUE SE TO THE CITY OF MINOT, NORTH DAKOTA

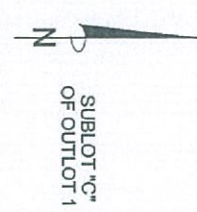
4TH AVENUE SE

74TH STREET SE

VACATED 4TH AVENUE SE

993.44' AVENUE SE

OUTLOT 10



Scale 1" = 200'

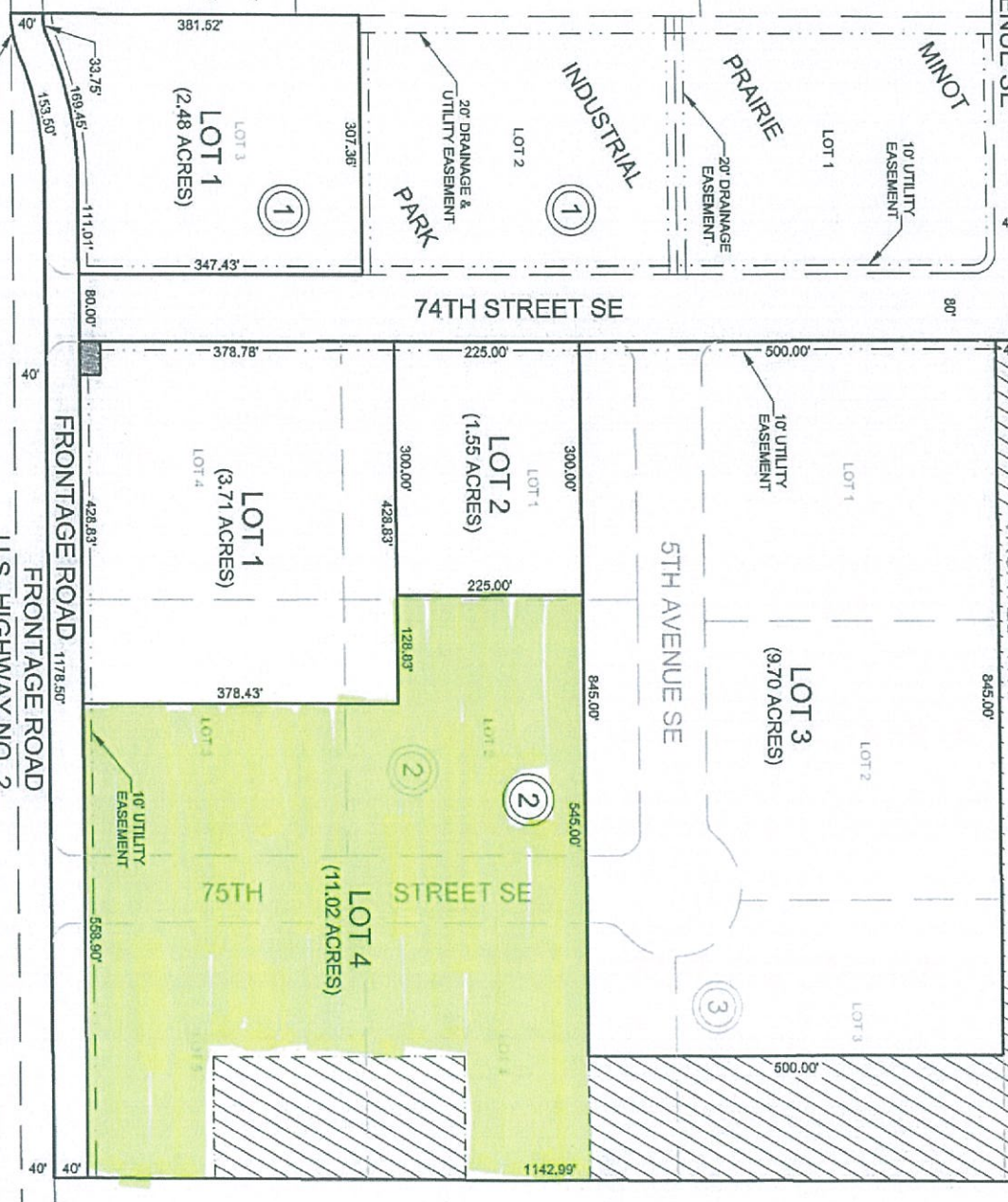
NOTES:
FOR PLANNING PURPOSES ONLY,
BEARINGS AND DISTANCES MAY VARY FROM
PREVIOUS PLATS DUE TO DIFFERENT METHODS
OF MEASUREMENTS.
PLATS SUBJECT TO ALL PRIOR EASEMENTS
A 10' UTILITY EASEMENT WILL BE ON THE
STRETSIDE OF EVERY LOT.

LOT BREAKDOWN
LOT 1, BLK 1 = 2.48 ACRES
LOT 1, BLK 2 = 3.71 ACRES
LOT 2, BLK 2 = 1.55 ACRES
LOT 3, BLK 2 = 0.70 ACRES
LOT 4, BLK 2 = 11.02 ACRES
RW = 1.29 ACRES
TOTAL = 129608.91 SQ.FT.
OR 29.75 ACRES

PROPOSED STORM WATER MANAGEMENT EASEMENT
EXACT DIMENSIONS TO BE DEFINED PRIOR TO FINAL PLAT

LEFT STATION RIGHT OF WAY
EXACT DIMENSIONS TO BE DEFINED PRIOR TO FINAL PLAT

**ACKERMAN SURVEYING
& ASSOCIATES, INC.**
(701) 839-0788
1907 17TH ST SE, MINOT, N.D. 58701



SUBLOT "A"
OF OUTLOT 1

SUBLOT "C"
OF OUTLOT 1

SUBLOT "B"
OF OUTLOT 1

LOT 3
LOT 1
(2.48 ACRES)

LOT 1
(3.71 ACRES)

LOT 4
(11.02 ACRES)

LOT 2
(1.55 ACRES)

LOT 3
(9.70 ACRES)

LOT 1
(1.55 ACRES)

LOT 1
(1.55 ACRES)

LOT 2
(1.55 ACRES)

LOT 3
(0.70 ACRES)

LOT 4
(11.02 ACRES)

TOTAL = 129608.91 SQ.FT.
OR 29.75 ACRES

FRONTAGE ROAD 1178.50'

FRONTAGE ROAD

U.S. HIGHWAY NO. 2

428.83'

378.78'

300.00'

225.00'

300.00'

428.83'

378.78'

225.00'

300.00'

225.00'

300.00'

428.83'

378.78'

225.00'

300.00'

225.00'

300.00'

428.83'

378.78'

225.00'

300.00'

225.00'

381.52'

307.35'

111.01'

149.45'

153.50'

49.89'

80.00'

80.00'

80.00'

80.00'

80.00'

80.00'

80.00'

80.00'

80.00'

80.00'

80.00'

80.00'

80.00'

80.00'

80.00'

80.00'

80.00'

80.00'

80.00'

80.00'

80.00'

80.00'

80.00'

80.00'

80.00'

80.00'

80.00'

80.00'

80.00'

80.00'

80.00'

80.00'

80.00'

80.00'

80.00'

80.00'

80.00'

80.00'

80.00'

80.00'

80.00'

80.00'

80.00'

80.00'

80.00'

80.00'

80.00'

80.00'

80.00'

80.00'

80.00'

80.00'

80.00'

80.00'