

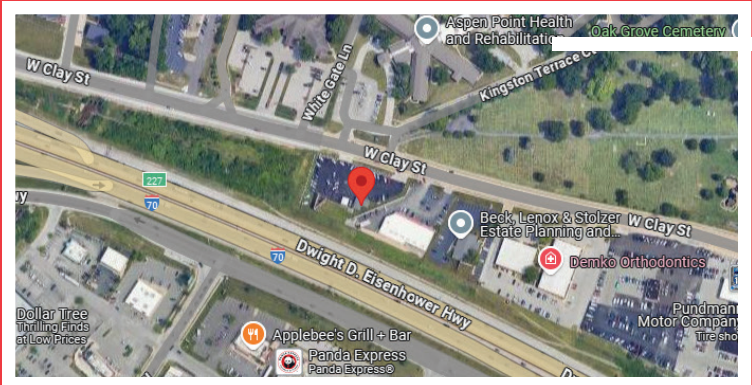
# FOR LEASE

2801 W Clay, St. Charles, MO 63301




## PROPERTY SUMMARY

- Approx. 1,100 SF newly remodeled office with large reception area, offices and numerous work stations.
- 0.91 Asphalt acres with parking for 70+ vehicles.
- Interstate 70 visibility with 2 separate entrances off of West Clay.
- Currently zoned for motor vehicle sales right in the heart of St. Charles
- Large canopy for washing/detailing vehicles.
- **LEASE RATE:**  
**\$4,500.00/month MG**



 Listing Agent **Doug Tinkham**

 Call **636-262-5978**

 **tinkham@shockleycommercial.com**



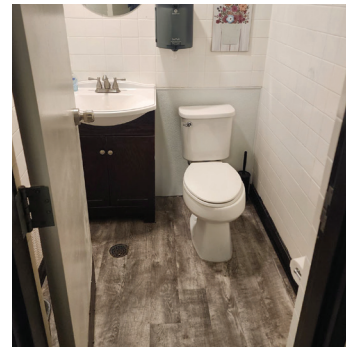
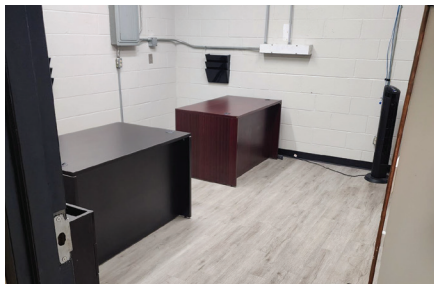
501 First Capital Dr. Suite 5,  
St. Charles MO 63301

 Office **636-946-9753**

 **www.shockleycommercial.com**

# LISTING PHOTOS

---



## Directions

I-70, go north on Fifth Street. Turn left onto First Capitol Drive. Building is on the right.