



Colliers

Accelerating success.

Site

Aspen St

Joplin Rd

For Lease

State of Idaho Campus
(formerly HP)

Chinden Blvd

Yard Space
11230 Joplin Road | Boise / Garden City

Josh McFadyen

760 212 2279

josh.mcfadyen@colliers.com

Scott Raeber, MBA, CCIM

208 472 2817

scott.raeber@colliers.com

Property Overview

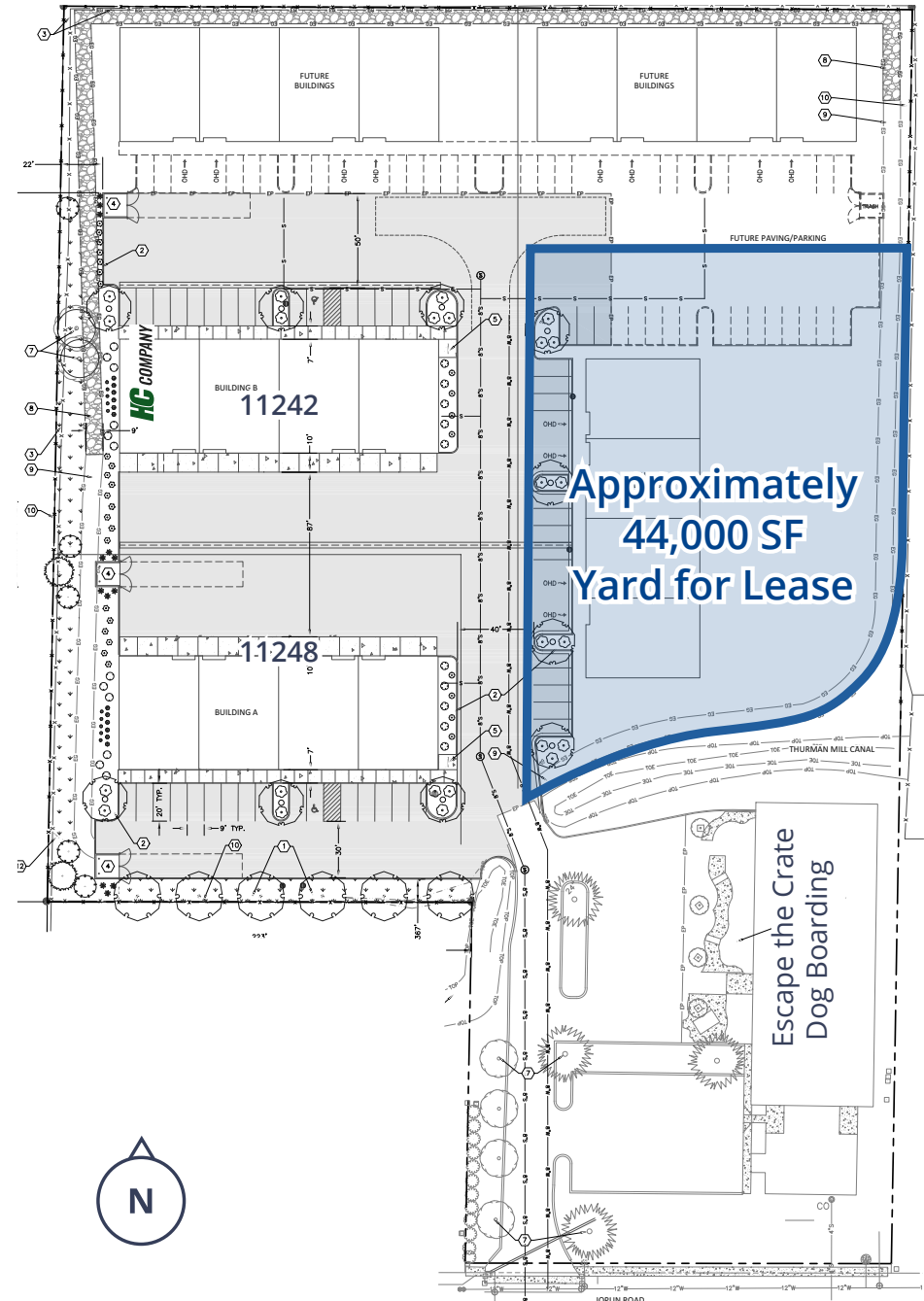


Google Map



Street View

Property Type	Industrial Yard Storage
Land Size	Approximately 44,000 SF of yard
Rate	\$0.08/SF
Location	Boise / Chinden
Zoning	I-L
Property Access	Contact Agent to Tour



755 West Front Street, Suite 300
Boise, Idaho 83702
208 345 9000
colliers.com/idaho

This document has been prepared by Colliers for advertising and general information only. Colliers makes no guarantees, representations or warranties of any kind, expressed or implied, regarding the information including, but not limited to, warranties of content, accuracy and reliability. Any interested party should undertake their own inquiries as to the accuracy of the information. Colliers excludes unequivocally all inferred or implied terms, conditions and warranties arising out of this document and excludes all liability for loss and damages arising there from. This publication is the copyrighted property of Colliers and /or its licensor(s). © 2025. All rights reserved. This communication is not intended to cause or induce breach of an existing listing agreement. Colliers Paragon, LLC.