

11610 FULTON STREET E  
LOWELL, MICHIGAN

OFFICE FOR SALE  
7,966 Square Feet Available



**SIGNATURE  
ASSOCIATES**  
KNOW SIGNATURE | KNOW RESULTS

**CURRENT PET CARE CENTER**



## PROPERTY FEATURES

- 7,966 total building square feet
- Located on 1.04 acres
- Ample parking
- Zoned COMM
- 12' ceilings
- Built in 1984
- Great for a variety of uses including gas station, restaurant, redevelopment, retail and a variety of office/medical users
- Sale Price: \$975,000 (\$122.40/sf)



For more information, please contact:

**JOE RIZQALLAH**  
(616) 822 6310  
jrizqallah@signatureassociates.com

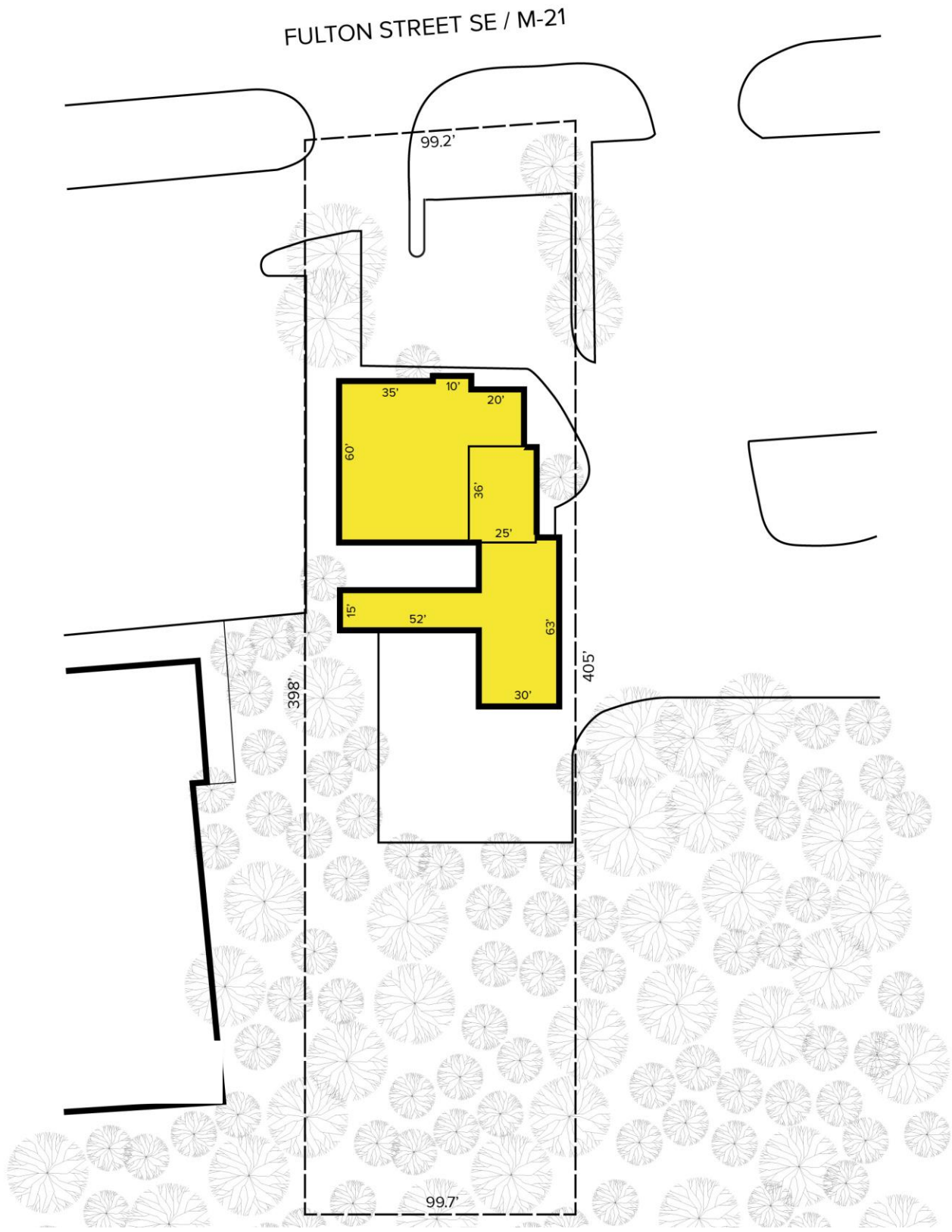
**SIGNATURE ASSOCIATES**  
1188 East Paris Ave SE, Suite 220  
Grand Rapids, MI 49546  
www.signatureassociateswm.com

# 11610 Fulton Street SE – Lowell, Michigan

Office For Sale

7,966  
Square Feet  
AVAILABLE

## Site Plan



For more information, please contact:

**JOE RIZQALLAH**  
(616) 822 6310  
jrizqallah@signatureassociates.com

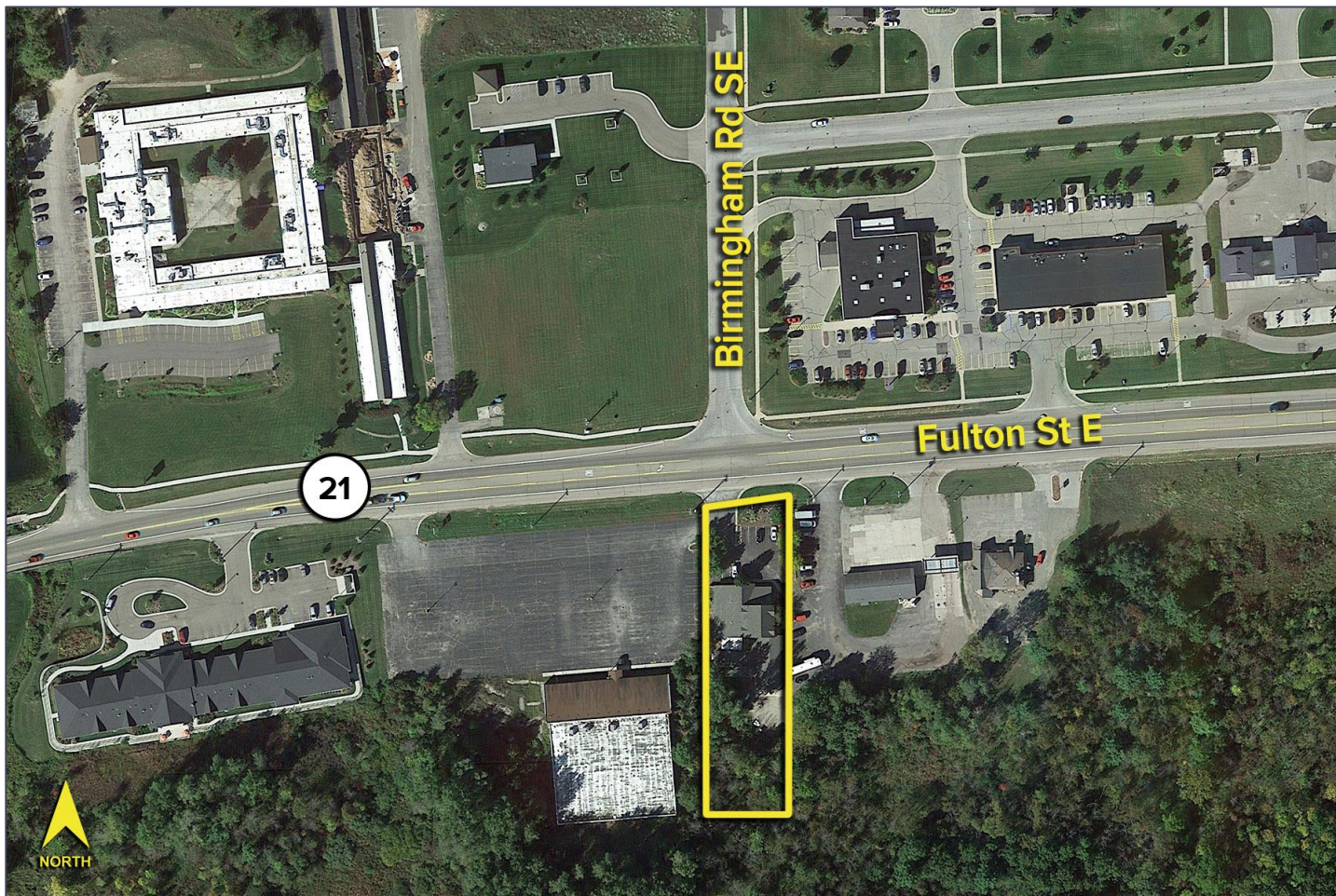
**SIGNATURE ASSOCIATES**  
1188 East Paris Ave SE, Suite 220  
Grand Rapids, MI 49546  
www.signatureassociateswm.com

Information is subject to verification and no liability for errors or omissions is assumed. Price is subject to change and listing withdrawal.

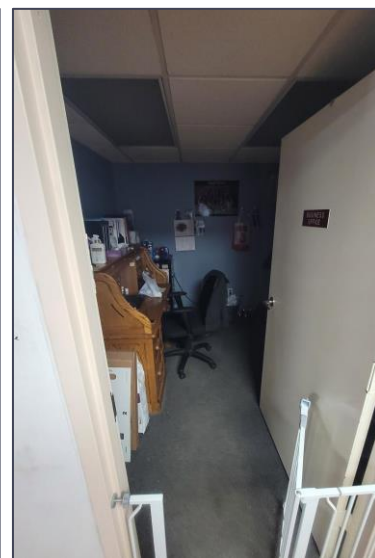
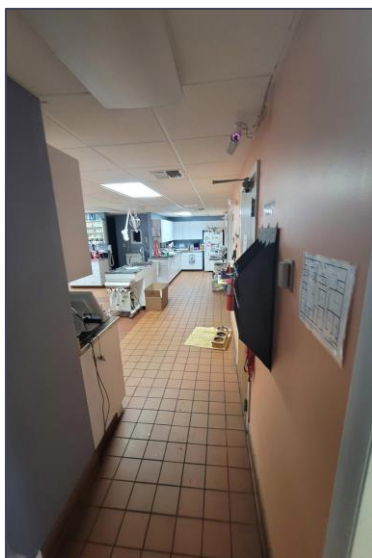
11610 Fulton Street SE – Lowell, Michigan  
Office For Sale

7,966  
Square Feet  
AVAILABLE

Aerial



Interior Photos



For more information, please contact:

**JOE RIZQALLAH**  
(616) 822 6310  
jrizqallah@signatureassociates.com

**SIGNATURE ASSOCIATES**  
1188 East Paris Ave SE, Suite 220  
Grand Rapids, MI 49546  
www.signatureassociateswm.com

Interior Photos



For more information, please contact:

**JOE RIZQALLAH**  
(616) 822 6310  
jrizqallah@signatureassociates.com

**SIGNATURE ASSOCIATES**  
1188 East Paris Ave SE, Suite 220  
Grand Rapids, MI 49546  
www.signatureassociateswm.com