

# 13018 CANYON ROAD EAST

PUYALLUP, WA 98373

IOS FOR LEASE: 88,471 SF

## CANYON ROAD IOS SITE

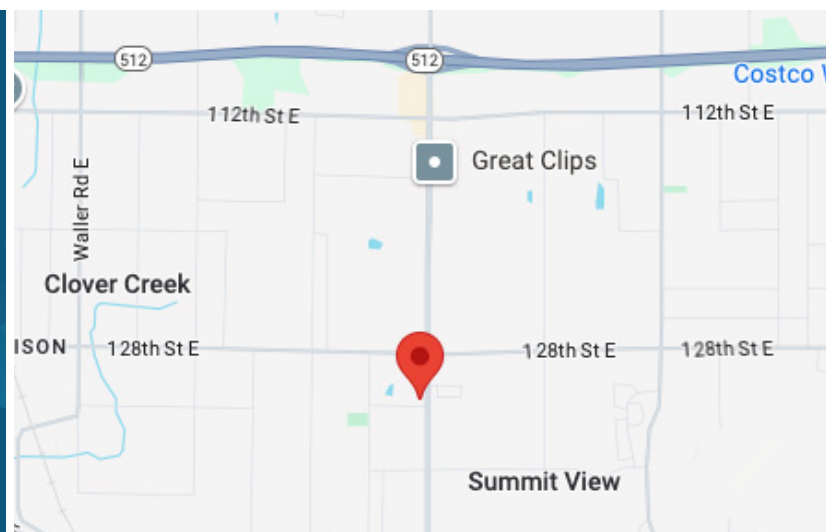


### LEASE INFORMATION

| Land Size | Office Size | Shop Size | Tent Size | Loading | Clear Height | Lease Rate  | Lease Type |
|-----------|-------------|-----------|-----------|---------|--------------|-------------|------------|
| 88,471 SF | 5,088 SF    | 1,168 SF  | 3,600 SF  | 1 GL    | 16'          | Call Broker | NNN        |

### PROPERTY FEATURES

- Property is located just south of Hwy-512 with immediate access to Canyon Road
- 88,471 SF of land currently available but able to expand to 95,000 SF if needed
- Newly remodeled office space totaling 5,088 SF
- 1,168 SF of shop/garage space
- 3,600 SF tent enclosure that can be used for additional shop space
- Ideal yard layout for storage purposes
- Available upon 30-day notice



**BRUCE VALENTINE**  
253.779.2400

bvalentine@neilwalter.com

**CAMERON VALENTINE**  
253.779.2427

cvalentine@neilwalter.com

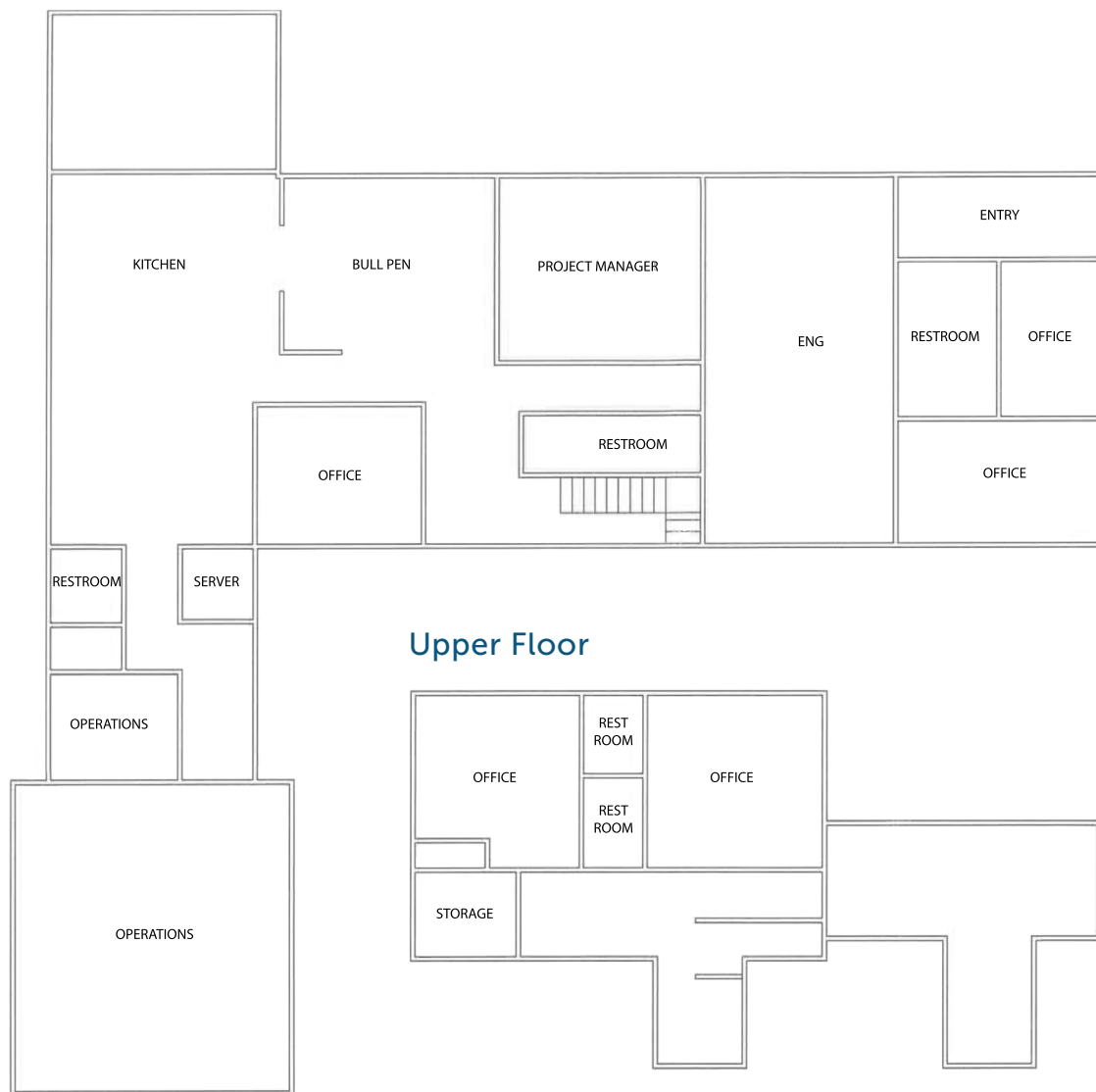
All information references in this document are approximate. The information contained herein is contained from sources deemed reliable. It is provided without representation, warranty, or guarantee, expressed or implied as to accuracy. Prospective buyer or tenant should conduct its own independent investigation relating to the property, government codes and regulations, allowed uses, and all other matters, regardless of whether they are referred to or contained in this document.

# 13018 CANYON ROAD EAST

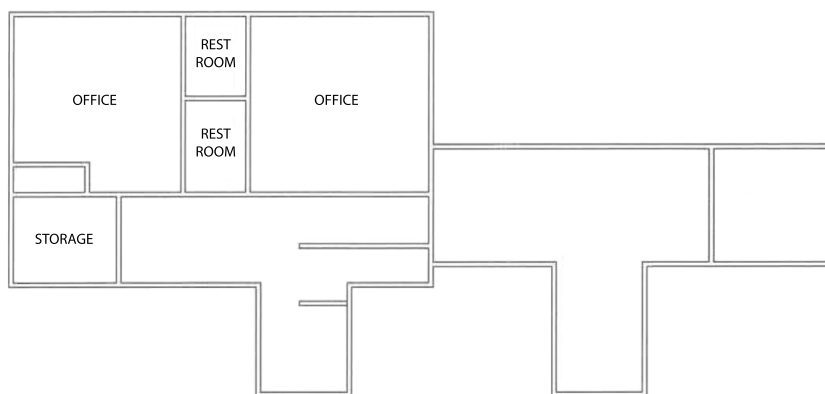
PUYALLUP, WA 98373



## Lower Floor



## Upper Floor



**BRUCE VALENTINE**  
253.779.2400  
bvalentine@neilwalter.com

**CAMERON VALENTINE**  
253.779.2427  
cvalentine@neilwalter.com

1940 East D St, #100  
Tacoma, WA 98421  
253.779.8400  
www.neilwalter.com

All information references in this document are approximate. The information contained herein is contained from sources deemed reliable. It is provided without representation, warranty, or guarantee, expressed or implied as to accuracy. Prospective buyer or tenant should conduct its own independent investigation relating to the property, government codes and regulations, allowed uses, and all other matters, regardless of whether they are referred to or contained in this document.



# 13018 CANYON ROAD EAST

PUYALLUP, WA 98373



**BRUCE VALENTINE**  
253.779.2400  
bvalentine@neilwalter.com

**CAMERON VALENTINE**  
253.779.2427  
cvalentine@neilwalter.com

1940 East D St, #100  
Tacoma, WA 98421  
253.779.8400  
www.neilwalter.com

All information references in this document are approximate. The information contained herein is contained from sources deemed reliable. It is provided without representation, warranty, or guarantee, expressed or implied as to accuracy. Prospective buyer or tenant should conduct its own independent investigation relating to the property, government codes and regulations, allowed uses, and all other matters, regardless of whether they are referred to or contained in this document.