

← Houston TX

Magnolia TX →

53,175 VPD

Tomball Parkway



BIG LOTS!



Michell Rd

SOUTHERN KNIGHTS  
SENIOR LIVING COMMUNITY

Johnson Rd

1.32 Acres

1.32 Acres



## Tomball TX - 2.72 Acres For Sale

28002 & 28010 Johnson Rd Tomball TX

# EVERMARK

COMMERCIAL GROUP

POWERED BY JLA REALTY

Jeri Blake

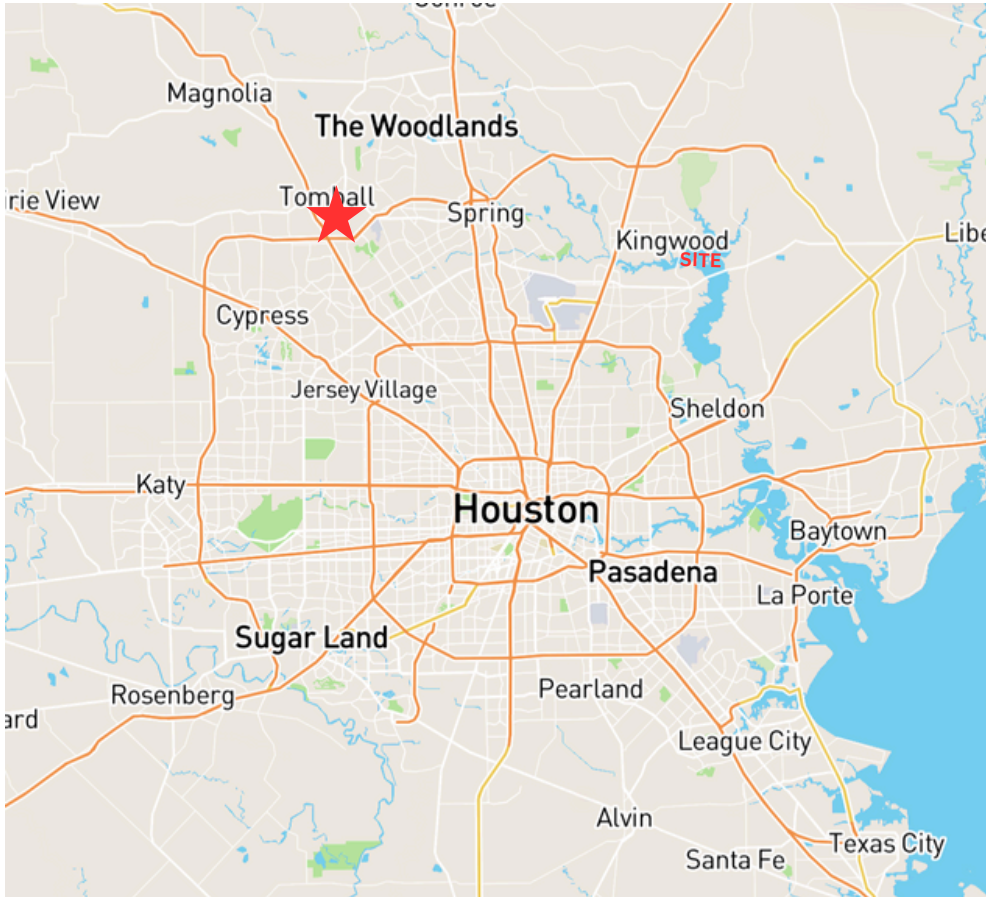
832.326.0097

[jblake@evermarkcommercial.com](mailto:jblake@evermarkcommercial.com)



# Summary

# TOMBALL TX LAND SALE



## Location:

Johnson Rd Tomball TX

## Property Highlights:

- Lot Size: 2 parcels totaling 2.72 Acres, just East of SH 249
- ±320' Frontage on Johnson Rd
- Utilities available through City of Tomball
- Excellent Investment Opportunity in rapidly growing Tomball TX
- Great location with excellent visibility in a high density Commercial and Residential populated area with close proximity to Freeways, medical facilities and retail
- Outside all flood zones
- Currently zoned residential but will be zoned commercial upon sale
- Ideal Use: Mixed Commercial, Multifamily, Office, Flex Space, Medical

## Traffic Counts:

Thesis ±4,840 VPD (TXDOT)

US 249: ± 53,175 VPD (TXDOT)

## Demographics

	1 Mile	3 Miles	5 Miles
Total Households	1,892	10,138	37,619
Total Population	4,290	27,455	108,364
Median HH Income	83,144	70,457	97,505

For more information Contact: 832-326-0097

| [jblake@evermarkcommercial.com](mailto:jblake@evermarkcommercial.com)



The information contained herein while based upon data supplied by sources deemed reliable, is subject to errors and omissions and is not in any way warranted by Evermark Commercial Group or by any agent, independent associate, subsidiary or employee of Evermark Commercial Group. This information is subject to change

Houston TX

Wood Leaf Reserve  
95 AC Community



Tomball Parkway

249  
TEXAS

53,175 VPD



DANCING FALLS BUSINESS PARK

HOBBY LOBBY  
burkes  
PET SUPPLIES PLUS



Also Available  
1.36 ac

Also Available  
1.36 ac

SOUTHERN KNIGHTS  
SENIOR LIVING COMMUNITY

BIG  
LOTS

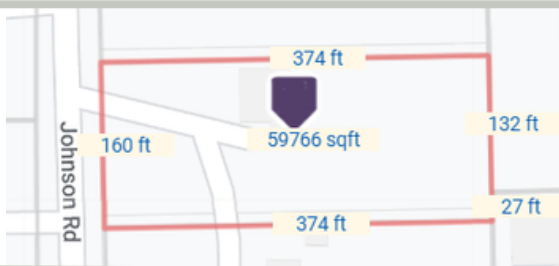
2.72  
Acres

Johnson Rd

Dogwood Apartments  
and Condos







This map was created for reference purposes only and is not to be construed as a "survey description" or a survey-quality product. The map and data are provided "AS IS" without warranty of any kind, either express or implied. CoreLogic and its sources, including but not limited to all government entities contributing information, do not represent or warrant that this map or the underlying data are complete or free from error, and do not assume, and expressly disclaim, any liability to any person for loss or damage caused by errors or omissions in the map or data. End users of the maps or data are advised to be aware of variations in the positional accuracy, data collection dates, compilation methods, cartographic format or otherwise associated with the map or data. End users are advised to utilize the maps and data appropriately.

