

# 851 Napa Valley Corporate Way, Napa

## Suite I ~ ±14,245 SF ~ \$1.25/SF/Mo. NNN



- Reception Area
- ±18 Private Offices
- Multiple Conference Rooms
- Kitchenette & Private Restrooms
- Shared Restrooms w/Showers
- Single-Story Office
- Large Cubicle Areas
- Some Cubicles May Remain
- Separately Metered
- Walking Distance to Dining
- Located in City of Napa
- Bus Stop Nearby



**A lease of five years or more will be granted a concession of three months free Base Rent if the lease is signed by the end of 2024. Some suites are divisible to a minimum of ±3,000 SF.**

**NOTE: THIS SUITE IS DIVISIBLE.** Other office suites available of 5,158 SF & 13,304 SF which could be divisible to a minimum of ±3,000 SF.

Virtual Tour: <https://www.youtube.com/watch?v=LPh30-BTnMQ>

\*For up to 5 Years, then 1.5% for any extended term.



**Michael Moffett**  
License #00946472  
707.479.1976  
mmoffett@cnapavalley.com

1775 Lincoln Ave.  
Napa, CA 94558

**Cathy Holmes**

License #01355085  
707.304.3338

cholmes@cnapavalley.com



# 851 Napa Valley Corporate Way, Napa

Suite I ~ ±2,951 ±14,245 SF ~ \$1.25/SF/Mo. NNN



Reception



Open Area



Large Conference Room



Second Conference Room



**Michael Moffett**

License #00946472

707.479.1976

[mmoffett@cnapavalley.com](mailto:mmoffett@cnapavalley.com)

1775 Lincoln Ave.

Napa, CA 94558

**Cathy Holmes**

License #01355085

707.304.3338

[cholmes@cnapavalley.com](mailto:cholmes@cnapavalley.com)



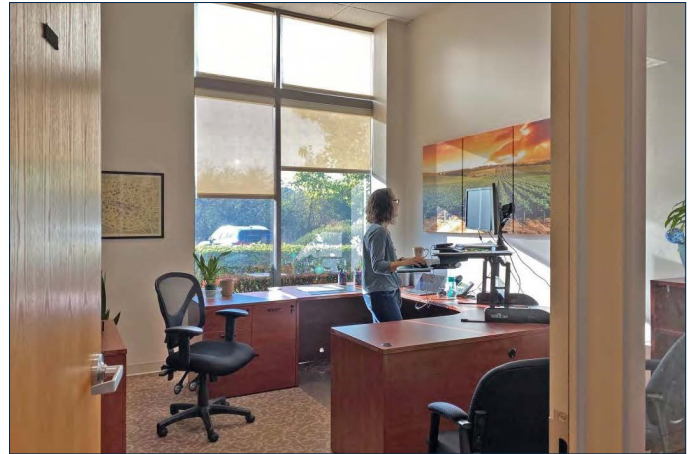


# 851 Napa Valley Corporate Way, Napa

Suite I ~ ±2,951 ±14,245 SF ~ \$1.25/SF/Mo. NNN



Open Area



Typical Private Office



Coffee Area



Kitchen



**Michael Moffett**

License #00946472

707.479.1976

[mmoffett@cnapavalley.com](mailto:mmoffett@cnapavalley.com)

1775 Lincoln Ave.

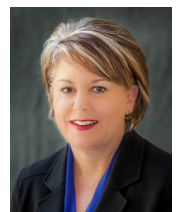
Napa, CA 94558

**Cathy Holmes**

License #01355085

707.304.3338

[cholmes@cnapavalley.com](mailto:cholmes@cnapavalley.com)





**COLDWELL BANKER**  
**COMMERCIAL**  
BROKERS  
OF THE VALLEY

# 851 Napa Valley Corporate Way, Napa

Suite I ~ ±2,951 ±14,245 SF ~ \$1.25/SF/Mo. NNN



**Michael Moffett**  
License #00946472  
707.479.1976  
mmoffett@cnapavalley.com

1775 Lincoln Ave.  
Napa, CA 94558

**Cathy Holmes**

License #01355085  
707.304.3338

cholmes@cnapavalley.com



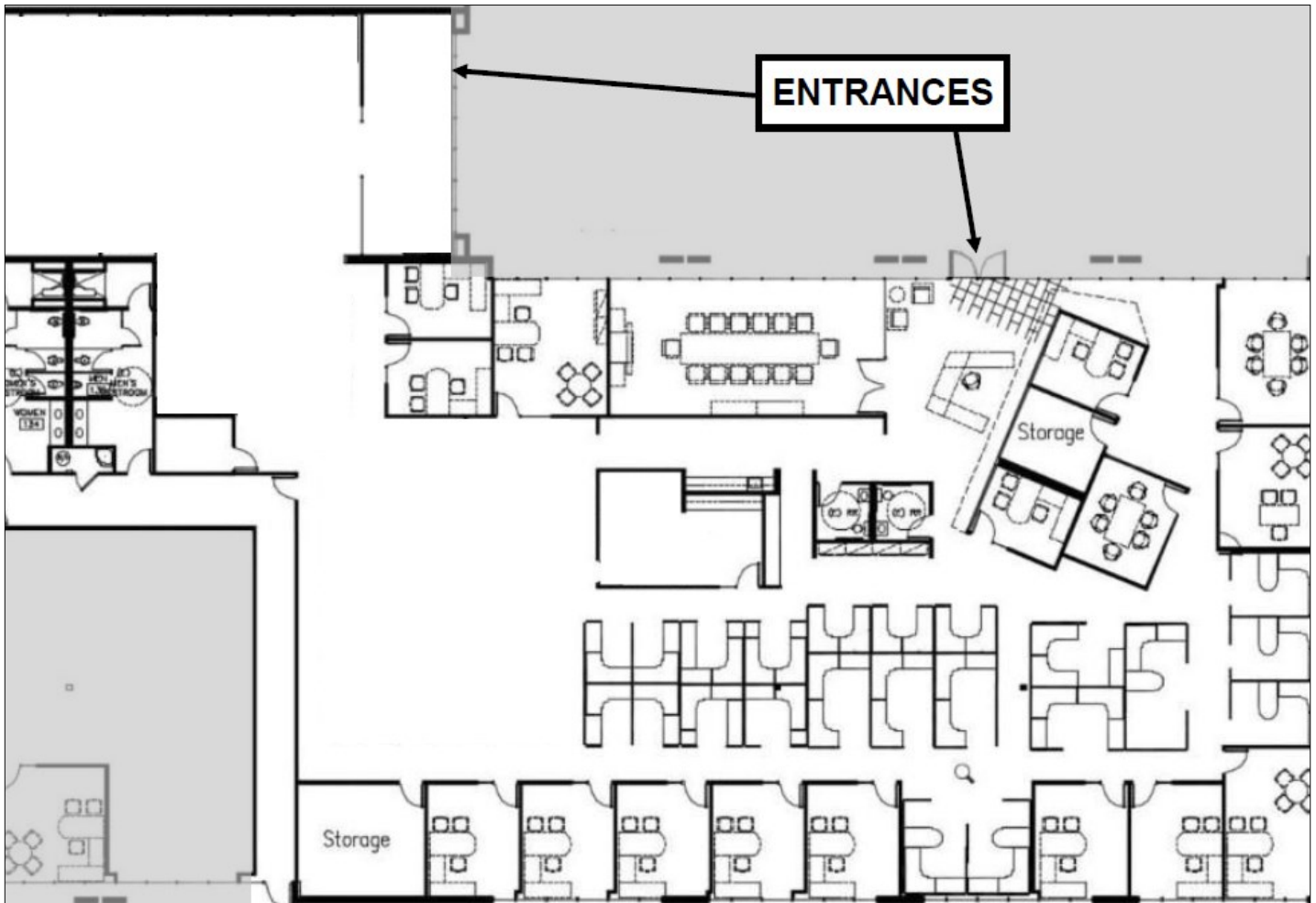


**COLDWELL BANKER  
COMMERCIAL**  
BROKERS  
OF THE VALLEY

# 851 Napa Valley Corporate Way, Napa

Suite I ~ ±2,951 ±14,245 SF ~ \$1.25/SF/Mo. NNN

## Floor Plan



**Michael Moffett**  
License #00946472  
707.479.1976  
mmoffett@cnapavalley.com

1775 Lincoln Ave.  
Napa, CA 94558

**Cathy Holmes**

License #01355085  
707.304.3338

cholmes@cnapavalley.com

