

# For Sale

# List Price \$699,000

## 8.374 Acres Off Pueblo Dr, Rhinelander, WI

Commercial Land



### CONTACT US

**PETE TENDERHOLT**

**715-360-0003**

**PTENDERHOLT@HOTMAIL.COM**

**DEB MANN**

**715-499-4470**

**DMANN@SHOREWEST.COM**



**8.374 Ac off Pueblo Dr**  
**PROPERTY HIGHLIGHTS**

**+/- 8.375 Acres**

**+/- 68 road frontage**

**Prime location North Side**

**Zoned B-3**

**Great Location for Multifamily**

**Adjacent Building Available**

**Minutes to Hodag Dome**

**Buyer to verify all info**



# 8.374 Acres Off Pueblo Dr, Rhinelander, WI

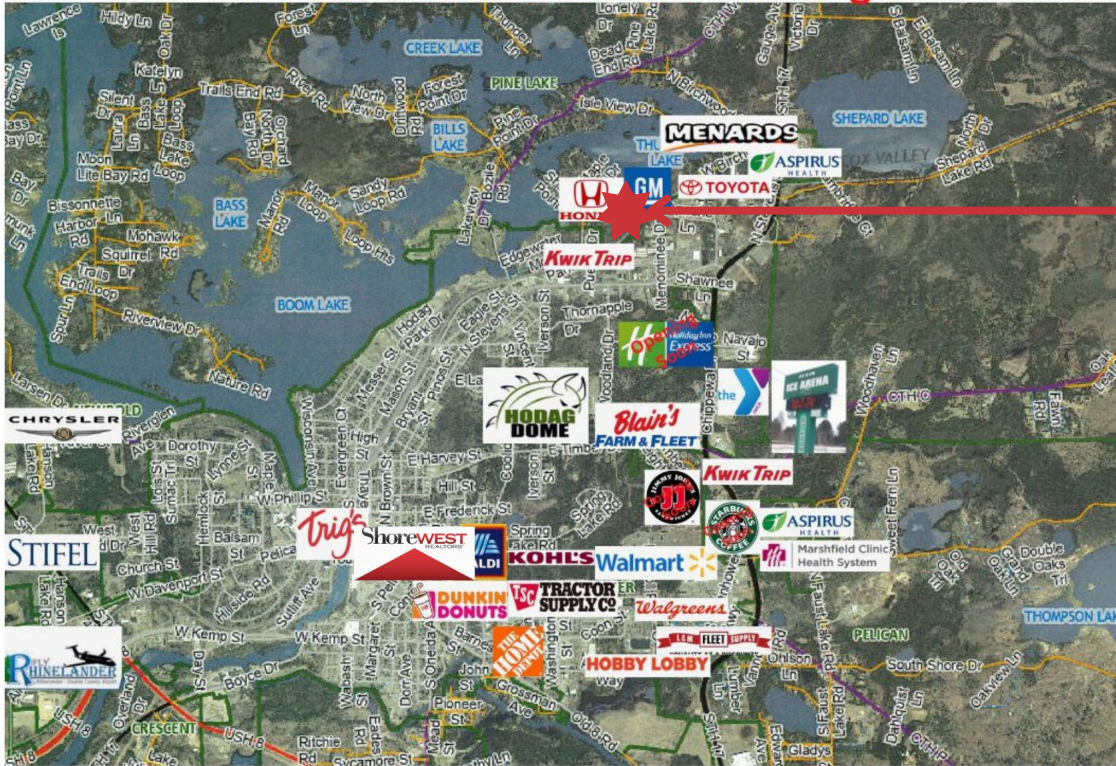
Commercial Land



PROPERTY MAP

## Rhinelander, WI

Rhinelander Wisconsin Is Growing!



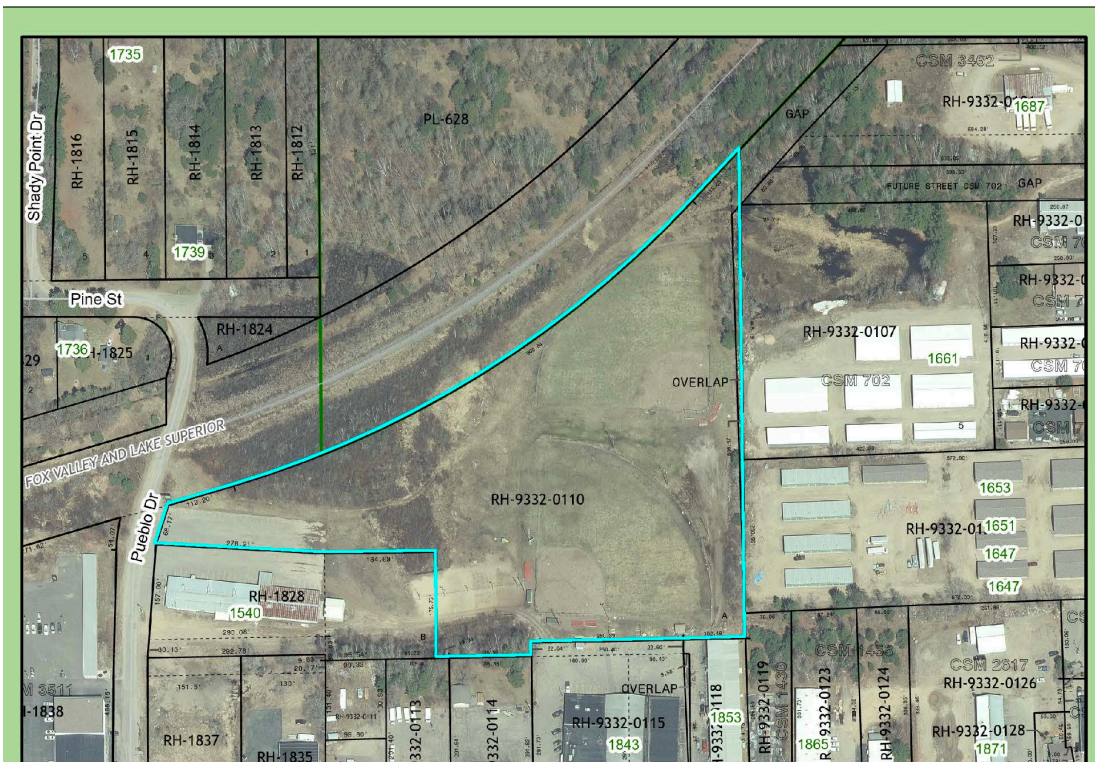
Your Next Location



Become a Hodag we want you here!



EHO



Oneida County GIS Map  
Oneida County, Wisconsin

This map is courtesy of the Oneida County Land Information office and is a general sketch of areas in Oneida County. It should not be used to represent surveys of property.

# 8.374 Acres Off Pueblo Dr, Rhinelander , WI

Commercial Land



## Oneida County

### Population

Rhinelander Population: 8,185

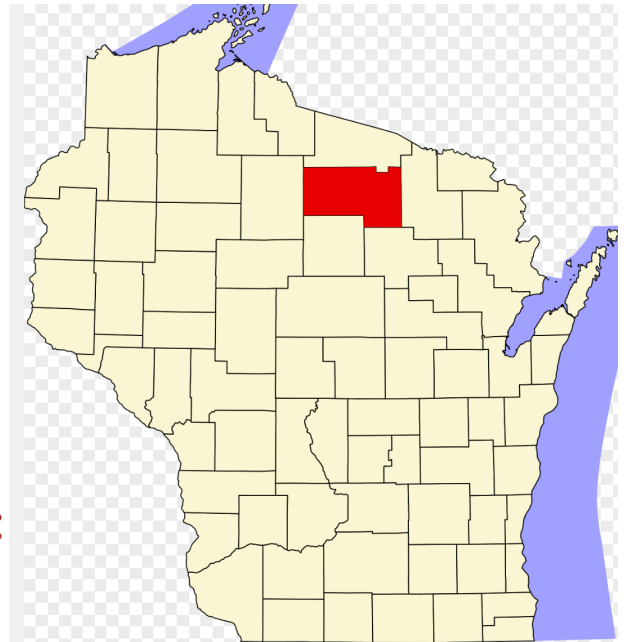
Oneida County Population: 37,845

### Median Family Income:

\$69,621

### Prominent Industries in the Region:

- Healthcare & Social Assistance
- Retail Trade
- Manufacturing
- Agriculture/Forestry/Fishing/Hunting
- Educational Services
- Mining/Quarrying/Oil/Gas Extraction
- Nicolet College



### Web links:

<https://www.ocedc.org>

<https://business.rhinelanderchamber.com>

<https://explorerhinelander.com/>

<https://www.co.oneida.wi.us>

<https://oneidacountywi.com/>

This information has been obtained from sources believed reliable. We have not verified it and make no guarantee, warranty, or representation about it. Any projections, opinions, assumptions, or estimates used are for example only and do not represent the current or future performance of the property. You and your advisors should conduct a careful, independent investigation of the property to determine to your satisfaction the suitability of the property for your needs. Photos herein are the property of their respective owners and use of these images without the express written consent of the owner is prohibited.