

DURHAM ID

200 & 300 MORRIS STREET | DURHAM, NC 27701



RETAIL SPACE FOR LEASE



LONGFELLOW

CBRE

PROPERTY HIGHLIGHTS

Woven into the city's fabric, Durham ID is an ever-evolving 1.8 million-square-foot, 27-acre open mixed-use development. The first two buildings within the project, located at 200 & 300 Morris Street, consist of Class A office & lab space with over 11,000 square feet of ground floor retail space and a 1,200+ car parking deck.

- 1,150 SF turnkey coffee shop with patio (former 321 Coffee)
- 2,833 SF corner space with outdoor seating ideal for restaurant users
- Prime downtown location provides connectivity to City Center, Old Five Points and the Warehouse District
- Highly walkable and surrounded by strong daytime population and Durham's expanding urban neighborhoods
- Activated courtyard and green space
- On-site structured parking with 1,200+ car parking deck





DPAC

CITY CENTER

AMERICAN TOBACCO

DURHAM ID

FIVE POINTS

DURHAM FARMERS' MARKET

300 MORRIS ST

200 MORRIS ST

DURHAM ATHLETIC PARK

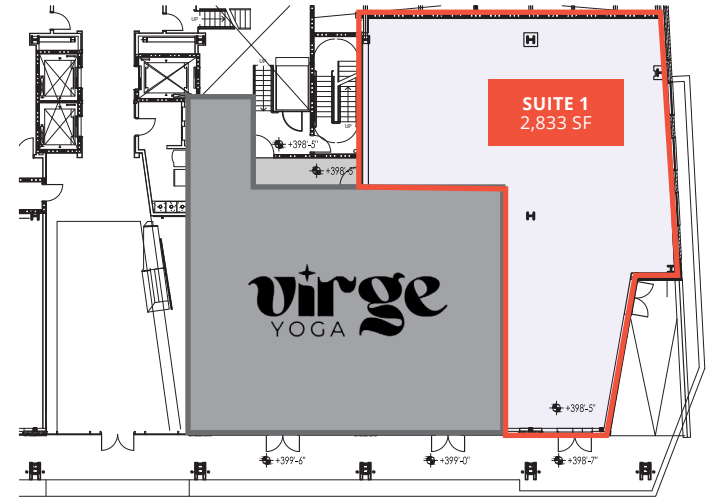
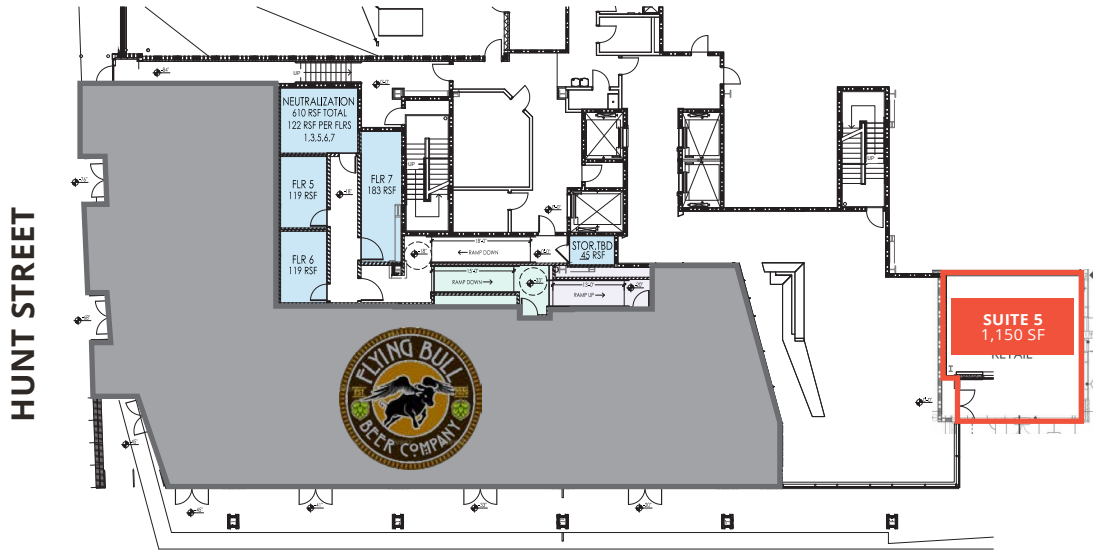
WEST VILLAGE

DURHAM ID

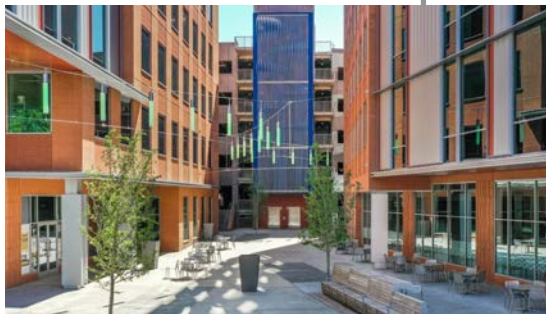
AREA OVERVIEW

300 MORRIS STREET

200 MORRIS STREET



MORRIS STREET



DURHAM ID

DURHAM ID

CBRE

For retail leasing information,
please contact:

Charlie Coyne
Executive Vice President
+1 919 831 8233
charlie.coyne@cbre.com

Reid Watkins
Sales Assistant
+1 919 831 2273
reid.watkins@cbre.com



LONGFELLOW

© 2024 CBRE, Inc. All rights reserved. This information has been obtained from sources believed reliable but has not been verified for accuracy or completeness. CBRE, Inc. makes no guarantee, representation or warranty and accepts no responsibility or liability as to the accuracy, completeness, or reliability of the information contained herein. You should conduct a careful, independent investigation of the property and verify all information. Any reliance on this information is solely at your own risk. CBRE and the CBRE logo are service marks of CBRE, Inc. All other marks displayed on this document are the property of their respective owners, and the use of such marks does not imply any affiliation with or endorsement of CBRE.