

FAIRMOUNT

MT. PLEASANT

Landing



FAIRMOUNT MT. PLEASANT *Landing*

1035 - 1039 Johnnie Dodds Boulevard
Mount Pleasant, SC 29464



Early - Mid
2026 Delivery



Newly renovated
retail spaces



Updated
landscaping &
outdoor areas



High daily
traffic counts



Ample parking



Prime Mt. Pleasant
location



Surrounded by
residential growth



Ideal for a variety
of tenants

Publix
 KIDS FIRST Swim Schools
 PAISANOS
 SALLY BEAUTY
 ups

Bank of America

TD Bank

UNITED STATES POSTAL SERVICE

Chick-fil-A

SOUTH STATE BANK

South Atlantic Bank

Monument Signage
FAIRMOUNT
 MT. PLEASANT
Landing



Johnnie Dodds Blvd

40,850 ADT



Anna Knapp Blvd

verizon



BluePearl Pet Hospital

First Citizens Bank

ZOOM AERIAL

REDEVELOPMENT RENDERINGS



REDEVELOPMENT RENDERINGS



MONUMENT & DIRECTIONAL SIGNAGE

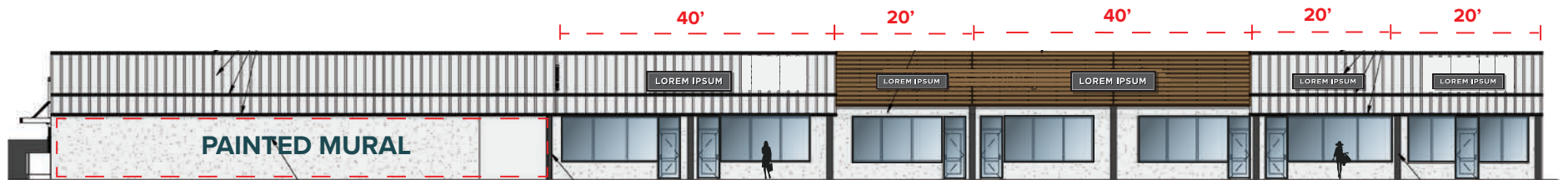
MONUMENT SIGNAGE



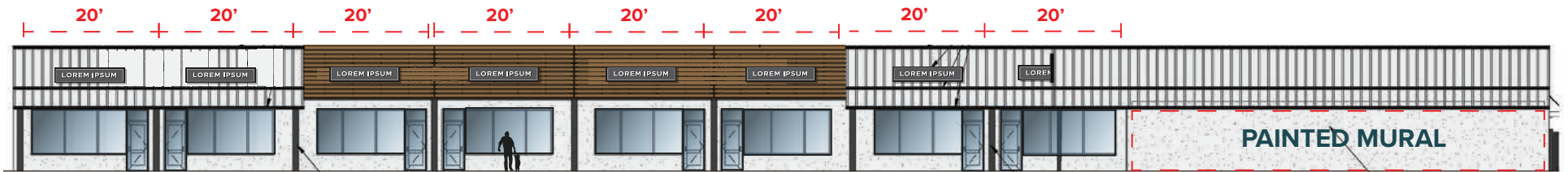
VEHICULAR DIRECTIONAL SIGNAGE



EAST BUILDING ELEVATIONS

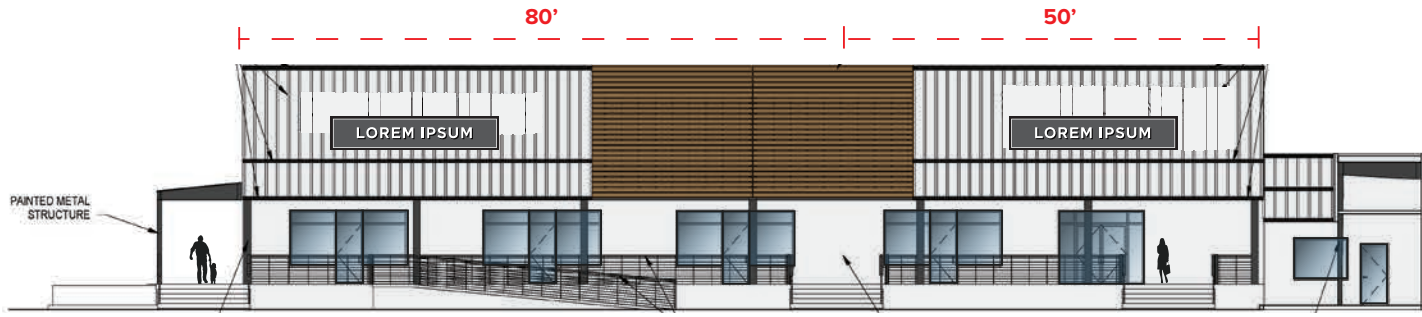


1 East Building - West Elevation
Scale: 1/16" = 1'-0"



2 East Building - South Elevation
Scale: 1/16" = 1'-0"

WEST BUILDING ELEVATIONS



1 West Building - East Elevation

Scale: 1/16" = 1'-0"



2 West Building - South Elevation

Scale: 1/16" = 1'-0"



3 West Building - South Elevation

Scale: 1/16" = 1'-0"



1 West Building - West Elevation

Scale: 1/16" = 1'-0"



Johnnie Dodds Blvd

OBLIQUE AERIAL

SITE PLAN & CURRENT AVAILABILITY



Leased
 Available

Suite	Tenant	Size	Suite	Tenant	Size	Suite	Tenant	Size	Suite	Tenant	Size	Suite	Tenant	Size	
1	AVAILABLE	1,212 SF	6-7	Degree Wellness	2,420 SF	15	Mother's Laundromat	1,215 SF	B-3	AVAILABLE - 1/1/2027	1,380 SF	B-10	AVAILABLE	1,219 SF	
2	Pleasantly CBD	1,213 SF	8	Sunfay Spa	1,206 SF	A-1-3	LEASE PENDING	6,413 SF	B-4	London Hair Studio	808 SF	B-11	AVAILABLE	1,247 SF	
3	World Finance	1,210 SF	9-10	Tru Blue's Sportsbar	3,028 SF	A-4-5	LEASE PENDING - 6/1/2025	4,635 SF	B-5	LOI PENDING - 9/1/2026	1,219 SF	C-1	AVAILABLE - 4/1/2026	1,244 SF	
4	Angel Nails	1,207 SF	11	LEASE PENDING	1,202 SF	A-6	AVAILABLE	155 SF	B-6	LOI PENDING - 8/1/2026	1,248 SF	C-2-3	An Initial Impression	2,439 SF	
5	Domino's	1,218 SF	12-13	Sunrise Bistro	2,432 SF	B-1	AVAILABLE	938 SF	B-7-8	Ville Sainte Bistro	2,461 SF	C-4	Arrow Barbershop	1,220 SF	
			14	AVAILABLE	1,207 SF - 2,422 SF	B-2	AVAILABLE	2,923 SF	B-9	Kanpai	1,221 SF	C-5	Glow Bar	1,216 SF	
													C-9-10	Caviar Bananas	2,472 SF
													STORAGE		1,012 SF



Mount Pleasant Key Metrics

SOUTH CAROLINA



Retail in Mount Pleasant, SC, is thriving and diverse, serving both its growing population and steady stream of visitors. The town features a healthy mix of national chains, regional brands, and locally owned boutiques, spread across well-developed shopping centers and walkable districts.



Business in Mount Pleasant is vibrant and growing, fueled by a strong local economy, educated workforce, and strategic location near Charleston. The town supports a wide mix of industries, including healthcare, professional services, construction, retail, hospitality, and real estate development.



The town offers a growing arts and culture scene that reflects its coastal charm and community pride. The town hosts regular events like the Blessing of the Fleet & Seafood Festival, ArtFest, and local farmers markets that often feature live music, handmade crafts, and regional artwork.



Mount Pleasant, SC, is home to a variety of parks that offer scenic beauty, outdoor recreation, and community events. One of the most popular is Memorial Waterfront Park, located beneath the Ravenel Bridge, featuring a pier, playground, war memorial, and panoramic views of Charleston Harbor. It's also a gathering spot for festivals and outdoor concerts.



Highway 17 runs through the town and serves as the main commercial corridor, while the Arthur Ravenel Jr. Bridge provides quick access to downtown Charleston, making commuting easy for many residents. Ample parking and modern infrastructure support the town's rapid growth and daily traffic flow.

Fairmount Landing is located in Mount Pleasant, SC, which is a thriving coastal town just across the Cooper River from downtown Charleston. Known for its scenic beauty, historic charm, and family-friendly atmosphere, Mount Pleasant blends the best of Lowcountry living with modern amenities. The town features picturesque neighborhoods, waterfront parks like Shem Creek, and easy access to nearby beaches such as Sullivan's Island and Isle of Palms. Its historic roots are visible in sites like the Old Village and Patriots Point Naval & Maritime Museum, which includes the USS Yorktown.

Over the past few decades, Mount Pleasant has grown rapidly, becoming one of South Carolina's most desirable places to live. It offers top-rated schools, a variety of shopping and dining options, and a strong local economy supported by healthcare, retail, and professional services. Despite its growth, the town remains committed to preserving its coastal environment and historic character, offering residents a high quality of life just minutes from Charleston's cultural and economic center.

DEMOGRAPHICS

48k VPD
Highway 17



0.60%
Annual Growth Rate



132,700
Employee Population



1 MILE

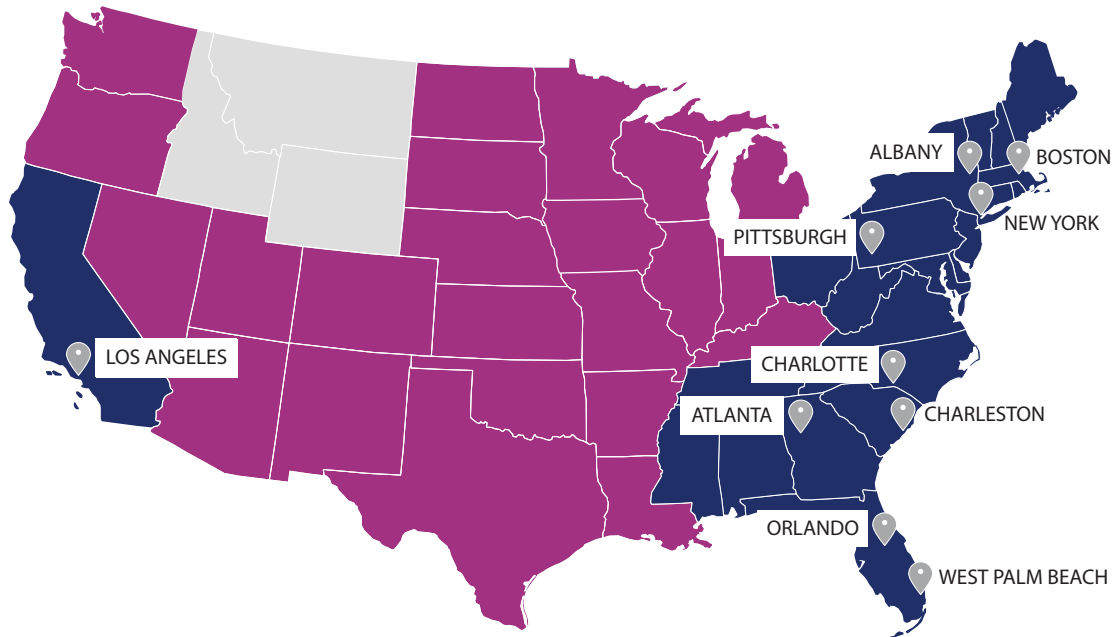
3 MILES

5 MILES



Total Population	9,510	50,809	98,096
Total Households	4,272	23,415	44,765
Daytime Population	15,035	63,560	132,709
Median Household Income	\$110,924	\$116,949	\$111,419
2025 Consumer Spending	\$592,488,962	\$3,326,937,763	\$6,155,298,937

Atlantic RETAIL



CHARLESTON

320 Wingo Way
Suite 200
Mt. Pleasant, SC
Phone: 843.735.2559



www.atlanticretail.com



[linkedin.com/company/atlantic-retail-properties](https://www.linkedin.com/company/atlantic-retail-properties)



[instagram.com/atlantic_retail](https://www.instagram.com/atlantic_retail)

REALTY
RESOURCES

CHAINLINKS
RETAIL ADVISORS

JOE PURZE



843.735.2559



jpurze@atlanticretail.com

CONTACT