



1705 COMMERCE DR NW ATLANTA, GA 30318

Call 817-404-2490  
for more information.



## CONTEMPORARY OFFICE SPACE | RENOVATED | FREE PARKING

### PROPERTY DETAILS

Recently renovated 5,980 sq ft office, located just off I-75 between Howell Mill Rd and Northside Dr. The suite has a separate private entrance and lobby with plenty of free private parking. The complete kitchenette provides space for staff and entertaining. Additionally, there is a large open common area set up with several work or meeting areas, 5 private offices, and multiple restrooms. Ideal for creative, legal, or institutional use.

### PROPERTY HIGHLIGHTS

- Open work areas w/5 private offices
- Private Restrooms
- Kitchenette
- Large conference room with furniture.
- Furnished, large common area for work/meetings.
- Located between Northside Dr. & Howell Mill Rd.



#### BRITTANY EDWARDS

Associate  
817-404-2490  
bedwards@hsccommercial.com

Every effort has been made to provide accurate information, but no liability is assumed for errors and omission



1705 COMMERCE DR NW ATLANTA, GA 30318

Call 817-404-2490  
for more information.



## BRITTANY EDWARDS

Associate  
817-404-2490  
[bedwards@hsccommercial.com](mailto:bedwards@hsccommercial.com)

Every effort has been made to provide accurate information, but no liability is assumed for errors and omission





1705 COMMERCE DR NW ATLANTA, GA 30318

Call 470-326-7026  
for more information.



## BRITTANY EDWARDS

Associate

470-326-7026

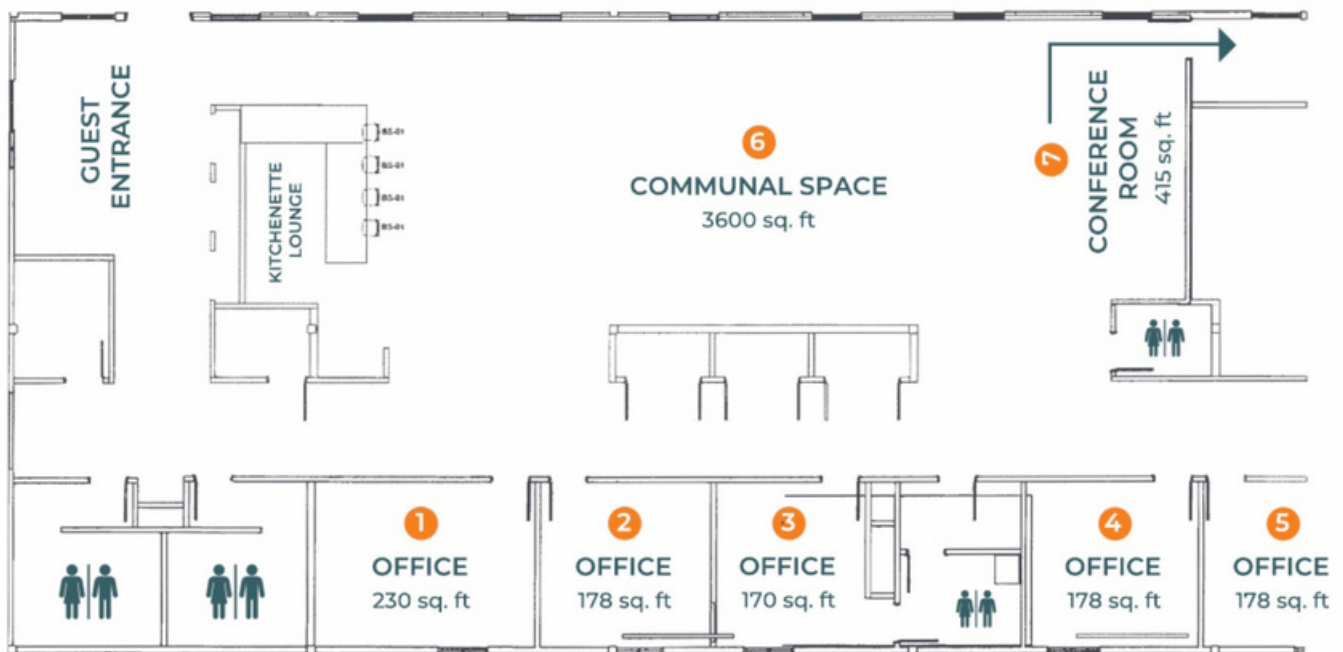
[bedwards@hcommercial.com](mailto:bedwards@hcommercial.com)

Every effort has been made to provide accurate information, but no liability is assumed for errors and omission

# Floorplan

## South at Bellemeade

Social Enterprise



October 10, 2022

**MOWA**  
Meals On Wheels Atlanta



### BRITTANY EDWARDS

Associate

817-404-2490

bedwards@hsicommercial.com

Every effort has been made to provide accurate information, but no liability is assumed for errors and omission